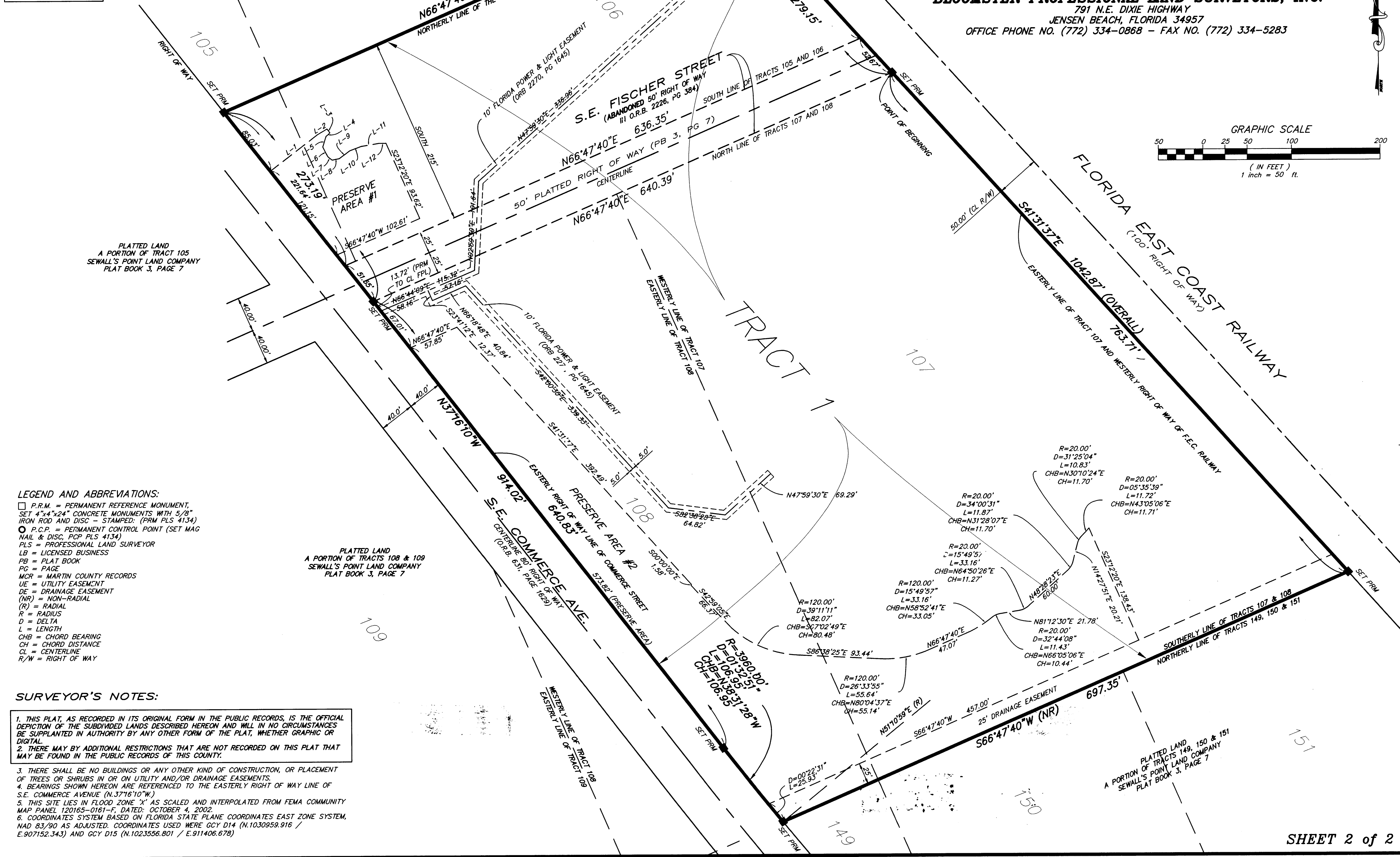
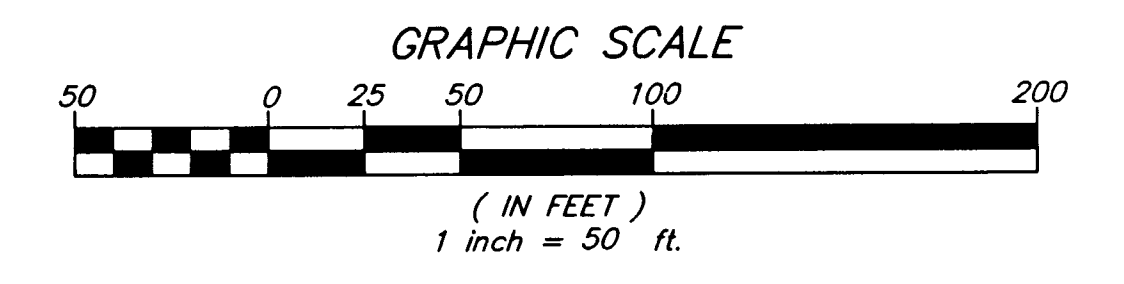


THIES DISTRIBUTING PLANT OF STUART

A REPLAT OF A PORTION OF TRACTS 105, 106, 107 AND 108,
AND A PORTION OF S.E. FISCHER STREET (A 50 FOOT RIGHT OF WAY)
AS SHOWN ON THE REVISED PLAT OF PORT SEWALL LAND COMPANY
AS RECORDED IN PLAT BOOK 3, PAGE 7
CITY OF STUART, MARTIN COUNTY, FLORIDA

BLOOMSTER PROFESSIONAL LAND SURVEYORS, INC.
791 N.E. DIXIE HIGHWAY
JENSEN BEACH, FLORIDA 34957
OFFICE PHONE NO. (772) 334-0868 - FAX NO. (772) 334-5283

- PRESERVE AREA #1**
- L-1 N52°43'50"E 67.48'
 - L-2 N59°58'57"E 12.92'
 - L-3 S37°16'10"E 5.44'
 - L-4 S47°30'12"W 5.91'
 - L-5 S18°26'35"W 12.63'
 - L-6 S26°34'34"E 12.51'
 - L-7 S50°12'28"E 6.24'
 - L-8 N75°41'43"E 8.15'
 - L-9 N53°45'33"E 14.86'
 - L-10 N69°27'10"E 13.86'
 - L-11 N80°54'50"E 20.24'
 - L-12 N90°00'00"E 8.07'



LEGEND AND ABBREVIATIONS:

- P.R.M. = PERMANENT REFERENCE MONUMENT, SET 4"x4"x24" CONCRETE MONUMENTS WITH 5/8" IRON ROD AND DISC - STAMPED: (PRM PLS 4134)
- P.C.P. = PERMANENT CONTROL POINT (SET MAG NAIL & DISC, PCP PLS 4134)
- PLS = PROFESSIONAL LAND SURVEYOR
- LB = LICENSED BUSINESS
- PB = PLAT BOOK
- PG = PAGE
- MCR = MARTIN COUNTY RECORDS
- UE = UTILITY EASEMENT
- DE = DRAINAGE EASEMENT
- (NR) = NON-RADIAL
- (R) = RADIAL
- R = RADIUS
- D = DELTA
- L = LENGTH
- CHB = CHORD BEARING
- CH = CHORD DISTANCE
- CL = CENTERLINE
- R/W = RIGHT OF WAY

SURVEYOR'S NOTES:

1. THIS PLAT, AS RECORDED IN ITS ORIGINAL FORM IN THE PUBLIC RECORDS, IS THE OFFICIAL DEPICTION OF THE SUBDIVIDED LANDS DESCRIBED HEREON AND WILL IN NO CIRCUMSTANCES BE SUPPLANTED IN AUTHORITY BY ANY OTHER FORM OF THE PLAT, WHETHER GRAPHIC OR DIGITAL.
2. THERE MAY BE ADDITIONAL RESTRICTIONS THAT ARE NOT RECORDED ON THIS PLAT THAT MAY BE FOUND IN THE PUBLIC RECORDS OF THIS COUNTY.
3. THERE SHALL BE NO BUILDINGS OR ANY OTHER KIND OF CONSTRUCTION, OR PLACEMENT OF TREES OR SHRUBS IN OR ON UTILITY AND/OR DRAINAGE EASEMENTS.
4. BEARINGS SHOWN HEREON ARE REFERENCED TO THE EASTERLY RIGHT OF WAY LINE OF S.E. COMMERCE AVENUE (N.37°16'10"W).
5. THIS SITE LIES IN FLOOD ZONE 'X' AS SCALED AND INTERPOLATED FROM FEMA COMMUNITY MAP PANEL 120165-0161-F, DATED: OCTOBER 4, 2002.
6. COORDINATES SYSTEM BASED ON FLORIDA STATE PLANE COORDINATES EAST ZONE SYSTEM, NAD 83/90 AS ADJUSTED. COORDINATES USED WERE GCY D14 (N.1030959.916 / E.907152.343) AND GCY D15 (N.1023556.801 / E.911406.678)