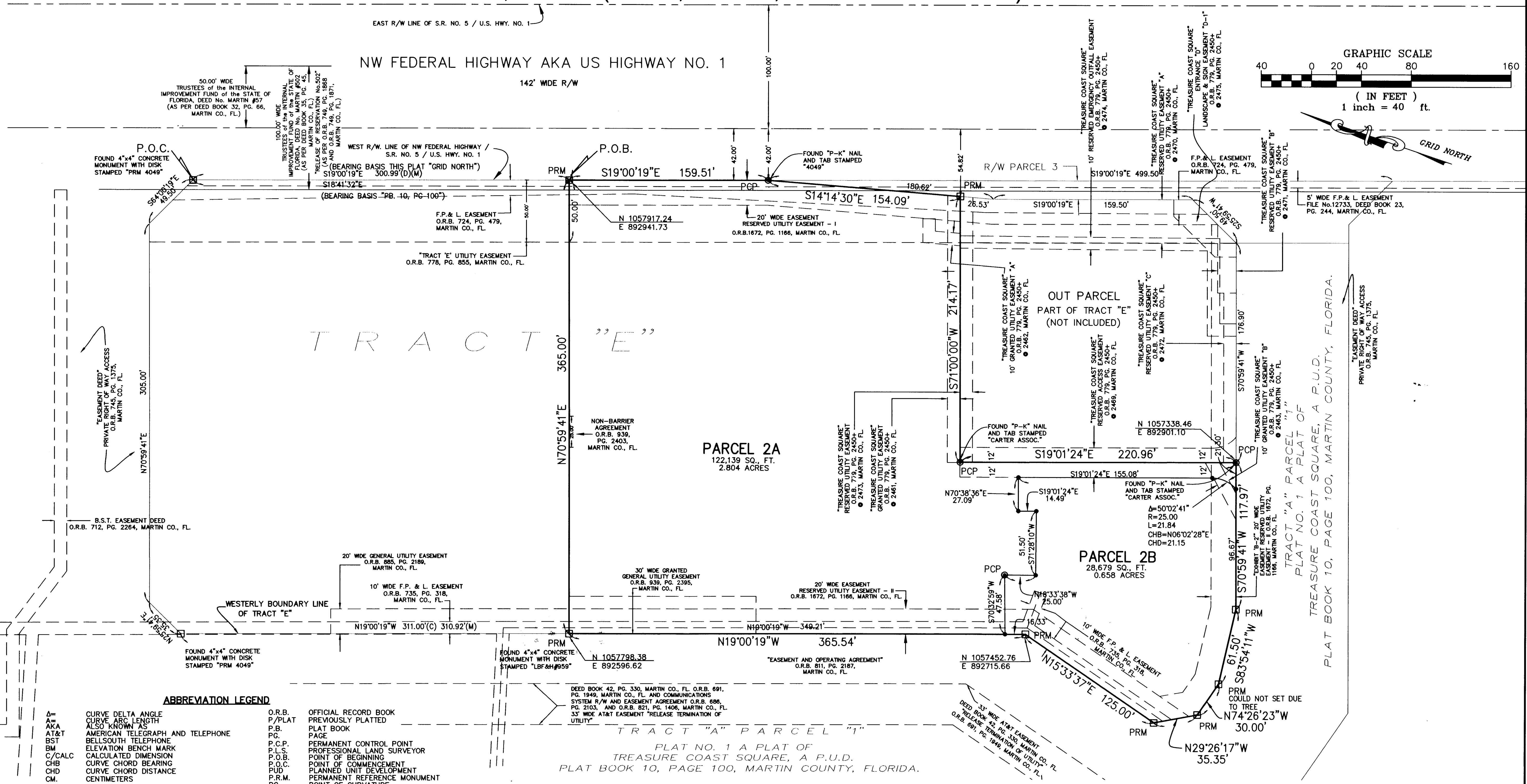


PLAT NO. 2, TREASURE COAST SQUARE, A P.U.D.

A PARCEL OF LAND SITUATE IN SECTION 19,
TOWNSHIP 37, SOUTH, RANGE 41 EAST, MARTIN COUNTY, FLORIDA.
BEING A REPLAT OF A PORTION OF TRACT "E", PLAT NO. 1, A PLAT OF TREASURE
COAST SQUARE, A P.U.D. (P.B. 10, PGS 100, SHEETS 1 THROUGH 5)

Plat Book 16 page 73



ABBREVIATION LEGEND

A=	CURVE DELTA ANGLE	O.R.B.	OFFICIAL RECORD BOOK
A=	CURVE ARC LENGTH	P/PLAT	PREVIOUSLY PLATTED
AKA	ALSO KNOWN AS	P.B.	PLAT BOOK
A&T	AMERICAN TELEGRAPH AND TELEPHONE	PG.	PAGE
BST	BELLSOUTH TELEPHONE	P.C.P.	PERMANENT CONTROL POINT
BM	ELEVATION BENCH MARK	P.L.S.	PROFESSIONAL LAND SURVEYOR
C/CALC	CALCULATED DIMENSION	P.O.B.	POINT OF BEGINNING
CHB	CURVE CHORD BEARING	P.O.C.	POINT OF COMMENCEMENT
CHD	CURVE CHORD DISTANCE	P.U.D.	PLANNED UNIT DEVELOPMENT
CM.	CENTIMETERS	P.R.M.	PERMANENT REFERENCE MONUMENT
CO.	COUNTY	PC.	POINT OF CURVATURE
D.	DESCRIPTION DIMENSION	P-K	PK BRAND NAIL
D.B.	DEED BOOK	PT.	POINT OF TANGENCY
D.E.	DRAINAGE EASEMENT	R=	CURVE RADIUS
DIA	DIAMETER	R/REC	RECORD DATA
DISC	DESCRIPTION DIMENSION	RAD.	RADIAL
ELEV.	ELEVATION	R/W	RIGHT-OF-WAY
FD/FND	FOUND SURVEY MARKER AS NOTED	REF.	REFERENCE
F.P. & L.	FLORIDA POWER AND LIGHT	RGE.	RANGE
G.P.S.	GLOBAL POSITIONING SYSTEM	SEC.	SECTION
ID	IDENTIFICATION	TWP.	TOWNSHIP
L=	CURVE ARC LENGTH	TYP.	TYPICAL
L.B.	LICENSED BUSINESS	S.R.	STATE ROAD
L.S.	LAND SURVEYOR	SQ. FT.	SQUARE FEET
M	MEASURE DIMENSION	U.E.	UTILITY EASEMENT
NAD/NAD83	NATIONAL ADJUSTED DATUM 1983	U.S.	UNITED STATES
NAVD/NAVD88	NATIONAL ADJUSTED VERTICAL DATUM 1988	USGS	UNITED STATES GEODETIC SURVEY
NGVD/NGVD29	NATIONAL GEODETIC VERTICAL DATUM 1929	WT. COR.	WITNESS CORNER
P.P.M.	PARTS PER MILLION		
N.R.	NON-RADIAL		

TRACT "A" PARCEL "1"
PLAT NO. 1 A PLAT OF
TREASURE COAST SQUARE, A P.U.D.
PLAT BOOK 10, PAGE 100, MARTIN COUNTY, FLORIDA.

SYMBOLS LEGEND

- P.C.P. = PERMANENT CONTROL POINT, SET "P-K" NAIL/TAB STAMPED "CARTER ASSOC. L.B. 205"
- P.R.M. = PERMANENT REFERENCE MONUMENT 4"x 4" CONCRETE MONUMENT WITH 2" DIA. ALUMINUM DISK STAMPED "CARTER ASSOC. PRM LB 205", UNLESS OTHERWISE NOTED.
- PROPERTY CORNER MONUMENT SET 1/2" IRON ROD & CAP STAMPED "CARTER ASSOC. L.B. 205"
- △ G.P.S. MONUMENT

THIS INSTRUMENT WAS PREPARED BY ROGER A. HAGLER, PLS IN THE OFFICES OF CARTER ASSOCIATES, INC.

CARTER ASSOCIATES, INC.
CONSULTING ENGINEERS AND PROFESSIONAL SURVEYORS AND MAPPERS
1708 21st. STREET
VERO BEACH, FLORIDA 32960
TEL.(772) 562-4191 FAX.(772) 562-7180
PROJECT NO. 06-37E
SHEET 2 OF 2