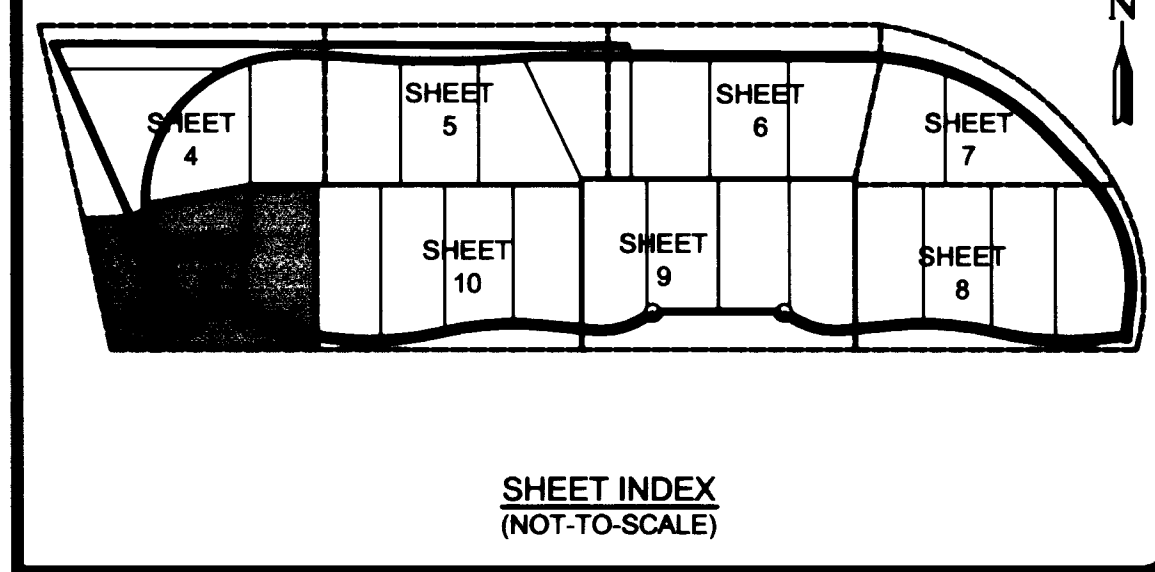
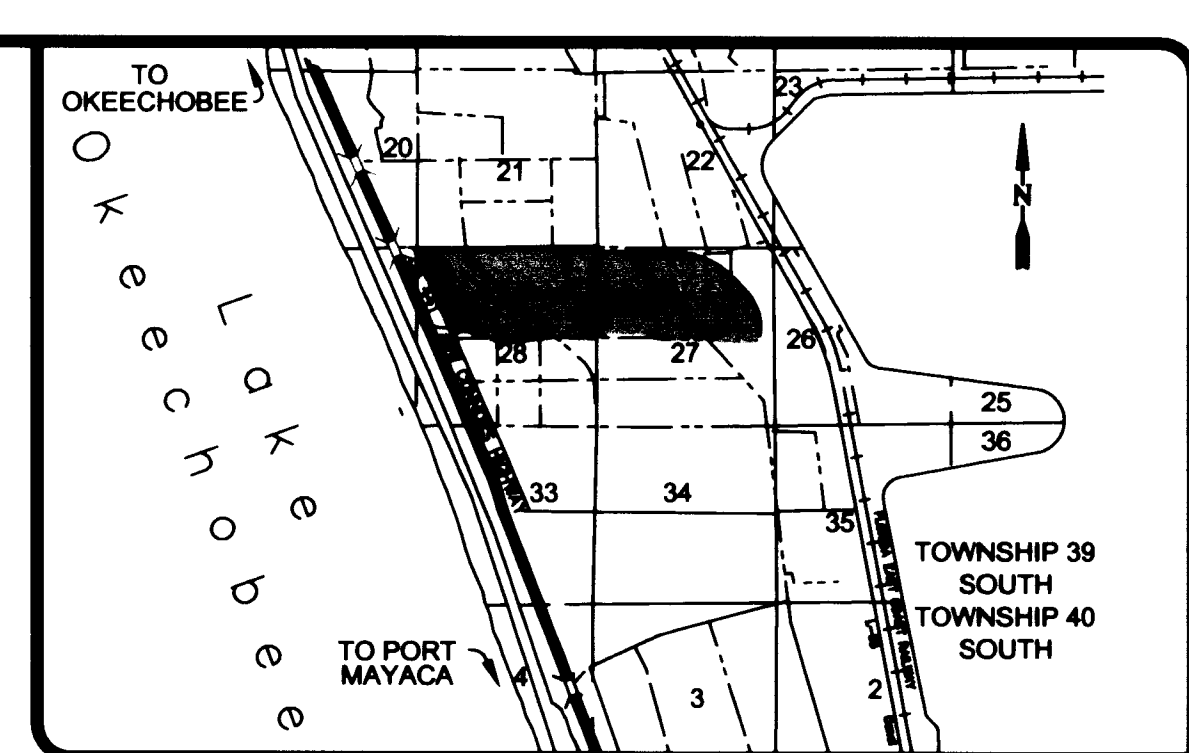


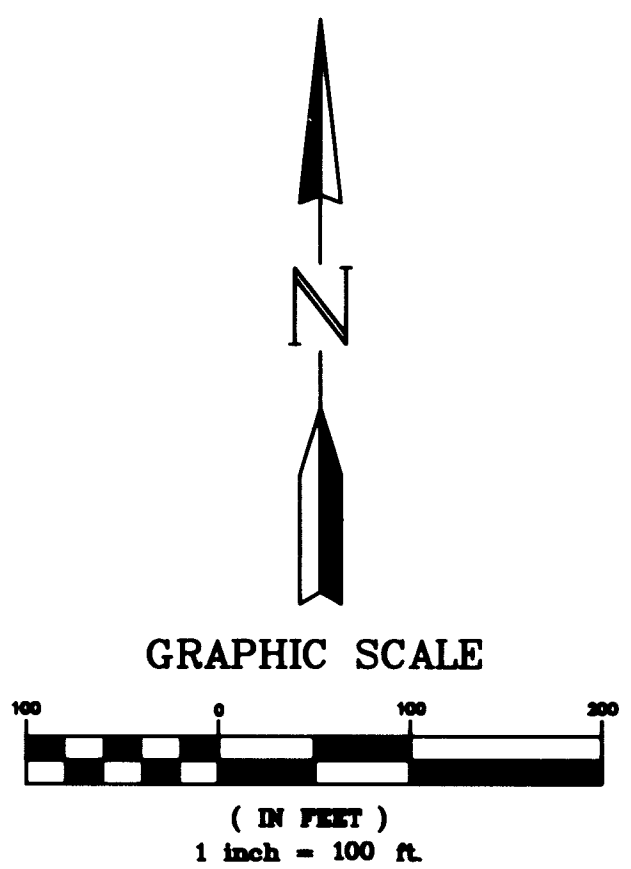
PLAT OF PORT MAYACA PLANTATION, PHASE 1

BEING A PARCEL OF LAND LOCATED IN SECTIONS 27, 28 & 29,
TOWNSHIP 39 SOUTH, RANGE 37 EAST, MARTIN COUNTY, FLORIDA



SHEET INDEX
(NOT-TO-SCALE)

LOCATION MAP
(NOT-TO-SCALE)



SURVEYOR'S NOTES

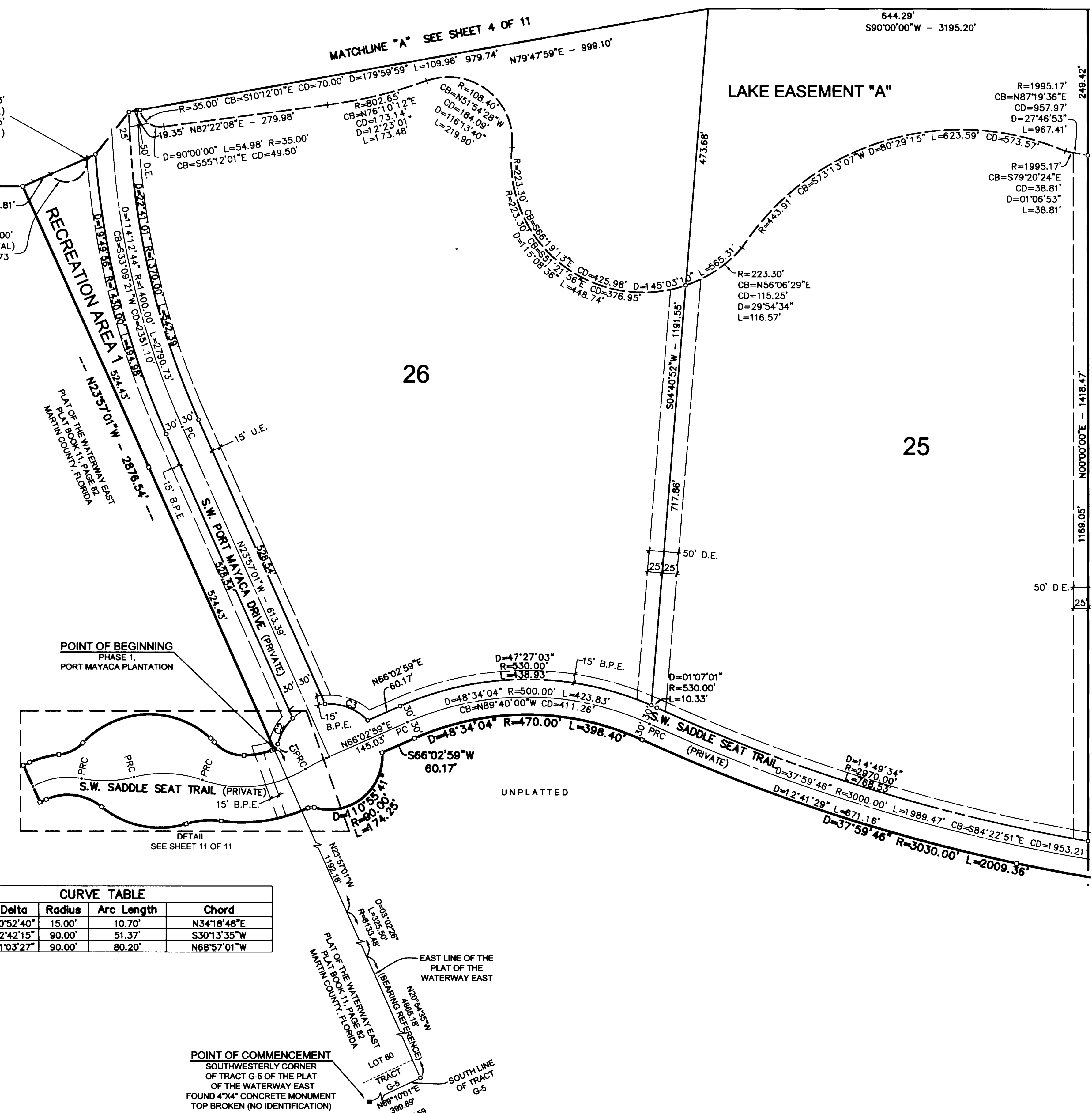
- 1) THIS PLAT, AS RECORDED IN ITS ORIGINAL FORM IN THE PUBLIC RECORDS, IS THE OFFICIAL DEPICTION OF THE SUBDIVIDED LANDS DESCRIBED HEREON AND WILL, IN NO CIRCUMSTANCES BE SUPPLANTED IN AUTHORITY BY ANY OTHER FORM OF THIS PLAT, WHETHER GRAPHIC OR DIGITAL.
- 2) THERE MAY BE ADDITIONAL RESTRICTIONS THAT ARE NOT RECORDED ON THIS PLAT THAT MAY BE FOUND IN THE PUBLIC RECORDS OF THIS COUNTY.
- 3) IN THE EVENT THAT MARTIN COUNTY DISTURBS THE SURFACE OF A PRIVATE STREET DUE TO MAINTENANCE, REPAIR OR REPLACEMENT OF A PUBLIC IMPROVEMENT LOCATED THEREIN, THEN THE COUNTY SHALL BE RESPONSIBLE FOR RESTORING THE STREET SURFACE ONLY TO THE EXTENT WHICH WOULD BE REQUIRED IF THE STREET WERE A PUBLIC STREET, IN ACCORDANCE WITH COUNTY SPECIFICATIONS.
- 4) IT SHALL BE UNLAWFUL TO ALTER THE APPROVED SLOPES, CONTOURS, OR CROSS SECTIONS OR TO CHEMICALLY, MECHANICALLY, OR MANUALLY REMOVE, DAMAGE, OR DESTROY ANY PLANTS IN THE LITTORAL OR UPLAND TRANSITION ZONE BUFFER AREAS OF CONSTRUCTED LAKES EXCEPT UPON THE WRITTEN APPROVAL OF THE GROWTH MANAGEMENT DIRECTOR, AS APPLICABLE. IT IS THE RESPONSIBILITY OF THE OWNER OR PROPERTY OWNERS ASSOCIATION, ITS SUCCESSORS OR ASSIGNS TO MAINTAIN THE REQUIRED SURVIVORSHIP AND COVERAGE OF THE RECLAIMED UPLAND AND PLANTED LITTORAL AND UPLAND TRANSITION AREAS AND TO ENSURE ON-GOING REMOVAL OF PROHIBITED AND INVASIVE NON-NATIVE PLANT SPECIES FROM THESE AREAS.
- 5) CONSERVATION AREAS SHALL BE PROTECTED FROM EXCAVATION, CONSTRUCTION AND OTHER BUILDING MAINTENANCE ACTIVITIES.
- 6) BEARINGS SHOWN HEREON ARE REFERENCED TO THE EAST LINE OF THE PLAT OF THE WATERWAY EAST, RECORDED IN PLAT BOOK 11, PAGE 82 OF THE PUBLIC RECORDS OF MARTIN COUNTY, FLORIDA. SAID LINE BEARS NORTH 20°54'35" EAST.
- 7) EACH LOT SHOWN HEREON HAS A MINIMUM OF 20.00 ACRES.
- 8) SURVEY SHOWN HEREON WAS PERFORMED USING REAL TIME KINEMATIC (RTK) GPS TECHNOLOGY CONTROL POINTS USED WERE "L 525" (NGS PID A16230) AND "M525" (NGS PID A16231).

LEGEND

- = SET PERMANENT CONTROL POINT (PCP) MAG NAIL & WASHER, LABELED, "GCY LB 4108 PSM 5199"
- = SET 3/4" IRON PIPE WITH YELLOW CAP LABELED, "GCY LB 4108 PSM 5199"
- ◻ = SET PERMANENT REFERENCE MONUMENT (PRM) 4"x4" CONCRETE MONUMENT WITH DISK LABELED "GCY LB 4108 PSM 5199"
- D = DELTA (CENTRAL ANGLE)
- L = ARC LENGTH
- R = RADIUS
- CB = CHORD BEARING AND DISTANCE
- CD = CHORD DISTANCE
- D.E. = DRAINAGE EASEMENT
- B.P.E. = BRIDLE PATH EASEMENT
- O.R.B. = OFFICIAL RECORD BOOK
- PC = POINT OF CURVATURE
- PRC = POINT OF REVERSE CURVATURE
- PT = POINT OF TANGENCY
- P.S.M. = PROFESSIONAL SURVEYOR & MAPPER
- U.E. = UTILITY EASEMENT
- W.B.E. = WETLAND BUFFER EASEMENT
- W.P.E. = WETLAND PRESERVATION EASEMENT

CURVE TABLE

Curve	Delta	Radius	Arc Length	Chord
C1	40°52'40"	15.00'	10.70'	N34°18'48"E
C2	32°42'15"	90.00'	51.37'	S30°13'35"W
C3	51°03'27"	90.00'	80.20'	N68°57'01"W



05-1083-04-03
LICENSED BUSINESS #4108

GCY
INCORPORATED
PROFESSIONAL SURVEYORS AND MAPPERS
CERTIFICATE OF AUTHORIZATION LB 4108

CORPORATE OFFICE: PO BOX 1469 • 1505 SW MARTIN HWY. PALM CITY, FL 34991 (800) 386-1066

TALLAHASSEE OFFICE: 4909 N. MONROE STREET TALLAHASSEE, FL 32303 (850) 536-8455