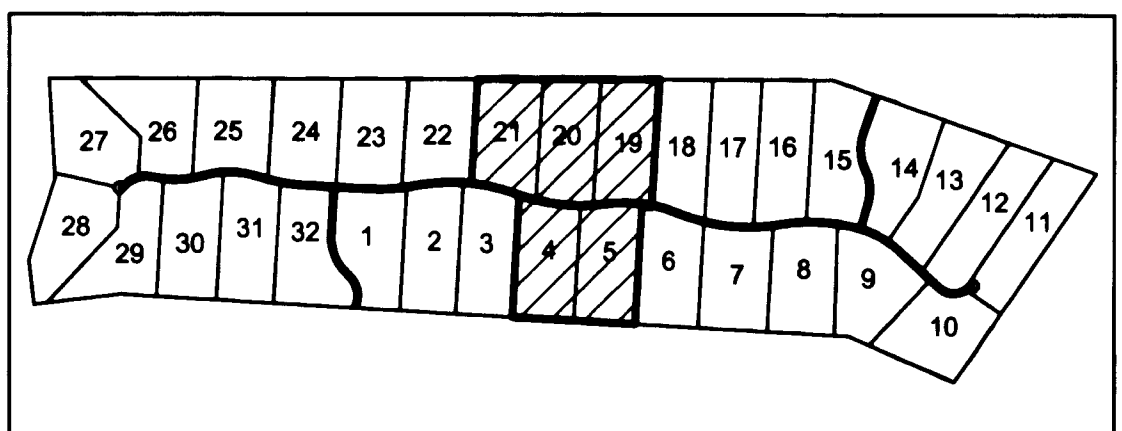


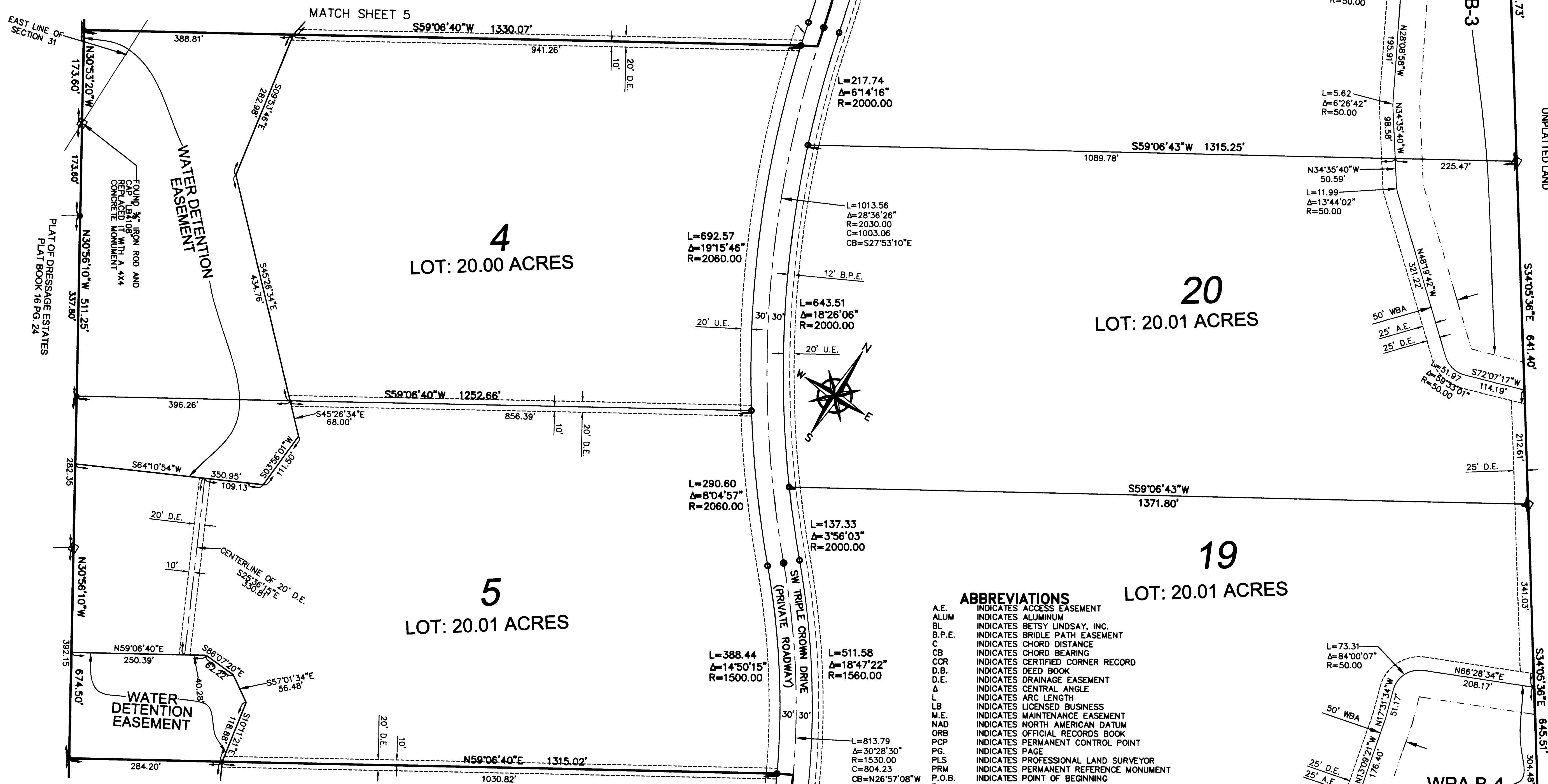
POLO CLUB

A PARCEL OF LAND LYING IN SECTION 5, TOWNSHIP 39 SOUTH, RANGE 40 EAST AND SECTIONS 29, 30, 31 AND 32, TOWNSHIP 38 SOUTH, RANGE 40 EAST BEING A PORTION OF PARCEL 1 AND ALL OF PARCELS 2, 3, 4 AND 5 AS DESCRIBED IN OFFICIAL RECORDS BOOK 1198, PAGE 1143, MARTIN COUNTY, FLORIDA



SYMBOL LEGEND

- SET 4x4 CONCRETE MONUMENT WITH ALUMINUM DISK "BETSY LINDSAY, INC. PRM LB 6852"
- SET #5 IRON ROD & CAP "BL LB 6852"
- SET NAIL AND WASHER (PCP) "BL LB 6852"



GENERAL NOTES

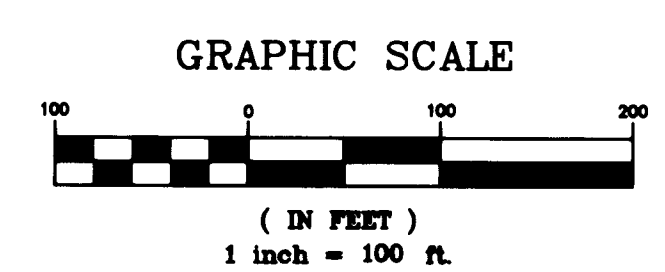
- A. BEARINGS AS SHOWN HEREON ARE BASED ON STATE PLANE COORDINATES, NAD 83/90, FLORIDA EAST ZONE, REFERENCE A BEARING OF S89°58'45"E ALONG THE NORTH LINE OF SECTION 32, TOWNSHIP 38 SOUTH, RANGE 40 EAST, MARTIN COUNTY, FLORIDA.
- B. THIS PLAT, AS RECORDED IN ITS ORIGINAL FORM IN THE PUBLIC RECORDS, IS THE OFFICIAL DEPICTION OF THE SUBDIVIDED LANDS DESCRIBED HEREON AND WILL IN NO CIRCUMSTANCES BE SUPPLANTED IN AUTHORITY BY ANY OTHER FORM OF THE PLAT, WHETHER GRAPHIC OR DIGITAL.
- C. NOTICE: THERE MAY BE ADDITIONAL RESTRICTIONS THAT ARE NOT RECORDED ON THIS PLAT THAT MAY BE FOUND IN THE PUBLIC RECORDS OF THIS COUNTY.
- D. IN THE EVENT THAT MARTIN COUNTY DISTURBS THE SURFACE OF A PRIVATE STREET DUE TO MAINTENANCE REPAIR OR REPLACEMENT OF A PUBLIC IMPROVEMENT LOCATED THEREIN, THEN THE COUNTY SHALL BE RESPONSIBLE FOR RESTORING THE STREET SURFACE TO THE EXTENT WHICH WOULD BE REQUIRED IF THE STREET WERE A PUBLIC STREET, IN ACCORDANCE WITH COUNTY SPECIFICATIONS.
- E. THERE SHALL BE NO BUILDING OR ANY OTHER KIND OF CONSTRUCTION OR TREES OR SHRUBS PLACED ON DRAINAGE EASEMENTS.

GENERAL NOTES (CONTINUED)

F. IT SHALL BE UNLAWFUL TO ALTER THE APPROVED SLOPES, CONTOURS, OR CROSS SECTIONS OR TO CHEMICALLY, MECHANICALLY, OR MANUALLY REMOVE, DAMAGE, OR DESTROY ANY PLANTS IN THE LITTORAL OR UPLAND TRANSITION ZONE BUFFER AREAS OF CONSTRUCTED LAKES EXCEPT UPON THE WRITTEN APPROVAL OF THE GROWTH MANAGEMENT DIRECTOR, AS APPLICABLE. IT IS THE RESPONSIBILITY OF THE OWNER OR PROPERTY OWNERS ASSOCIATION, ITS SUCCESSORS OR ASSIGNS TO MAINTAIN THE REQUIRED SURVIVORSHIP AND COVERAGE OF THE RECLAIMED UPLAND AND PLANTED LITTORAL AND UPLAND TRANSITION AREAS AND TO ENSURE ON-GOING REMOVAL OF PROHIBITED AND INVASIVE NON-NATIVE PLANT SPECIES FROM THESE AREAS.

ABBREVIATIONS

- A.E. INDICATES ACCESS EASEMENT
- ALUM INDICATES ALUMINUM
- BL INDICATES BETSY LINDSAY, INC.
- B.P.E. INDICATES BRIDLE PATH EASEMENT
- C INDICATES CHORD DISTANCE
- CB INDICATES CHORD BEARING
- CCR INDICATES CERTIFIED CORNER RECORD
- D.B. INDICATES DEED BOOK
- D.E. INDICATES DRAINAGE EASEMENT
- Δ INDICATES CENTRAL ANGLE
- L INDICATES ARC LENGTH
- LB INDICATES LICENSED BUSINESS
- M.E. INDICATES MAINTENANCE EASEMENT
- NAD INDICATES NORTH AMERICAN DATUM
- ORB INDICATES OFFICIAL RECORDS BOOK
- PCP INDICATES PERMANENT CONTROL POINT
- PG. INDICATES PAGE
- PLS INDICATES PROFESSIONAL LAND SURVEYOR
- PRM INDICATES PERMANENT REFERENCE MONUMENT
- P.O.B. INDICATES POINT OF BEGINNING
- R INDICATES RADIUS
- REF INDICATES REFERENCE
- U.E. INDICATES UTILITY EASEMENT
- WBA INDICATES WETLAND BUFFER AREA
- WPA INDICATES WETLAND PRESERVATION AREA



B BETSY LINDSAY, INC.
SURVEYING AND MAPPING

208 NORTH U.S. HWY No. 1 - UNIT 8 - TEQUESTA, FLORIDA 33469
(561)575-5275 (561)575-4324 FAX
LICENSED BUSINESS NO. 6852
POLO CLUB SHEET 6 OF 9