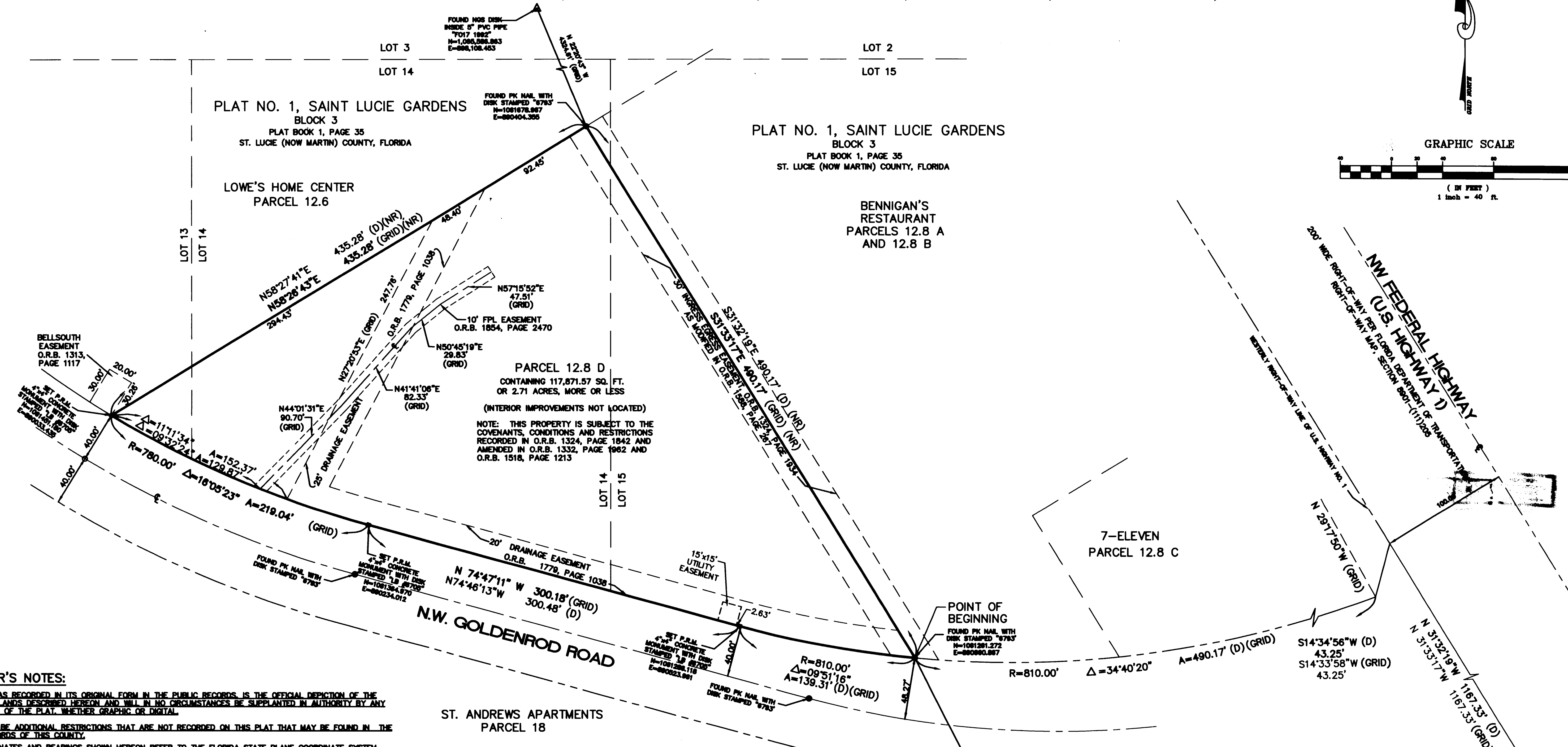
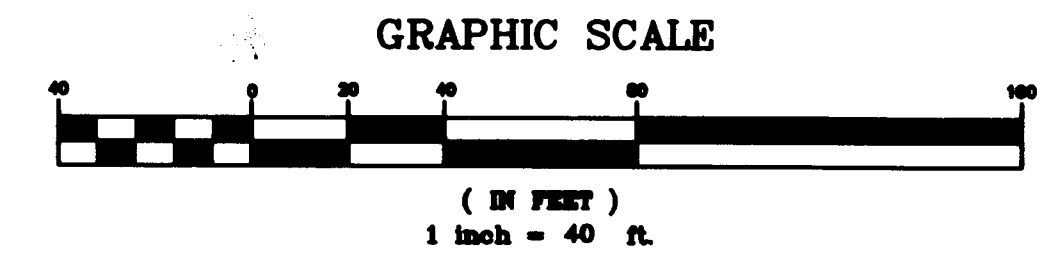


# WEST JENSEN PUD PHASE 1B, PARCEL 12.8D

BEING A REPLAT OF A PORTION OF LOTS 13, 14 AND 15, BLOCK 3, AS SHOWN ON PLAT NO. 1, SAINT LUCIE GARDENS,  
AS RECORDED IN PLAT BOOK 1, PAGE 35, ST. LUCIE (NOW MARTIN) COUNTY, FLORIDA, PUBLIC RECORDS.  
ALL LYING IN A PORTION OF SECTION 18, TOWNSHIP 37 SOUTH, RANGE 41 EAST, JENSEN BEACH, MARTIN COUNTY, FLORIDA.



**SURVEYOR'S NOTES:**

- THIS PLAT, AS RECORDED IN ITS ORIGINAL FORM IN THE PUBLIC RECORDS IS THE OFFICIAL DEPICTION OF THE SURVEYED LANDS DESCRIBED HEREON AND WILL IN NO CIRCUMSTANCES BE SUPPLANTED IN AUTHORITY BY ANY OTHER FORM OF THE PLAT, WHETHER GRAPHIC OR DIGITAL.
- THERE MAY BE ADDITIONAL RESTRICTIONS THAT ARE NOT RECORDED ON THIS PLAT THAT MAY BE FOUND IN THE PUBLIC RECORDS OF THIS COUNTY.
- THE COORDINATES AND BEARINGS SHOWN HEREON REFER TO THE FLORIDA STATE PLANE COORDINATE SYSTEM, TRANSVERSE MERCATOR PROJECTION, EAST ZONE, NORTH AMERICAN DATUM OF 1983 (NAD83 / 90 ADJUSTMENT) AND ARE BASED UPON THE FOLLOWING MONUMENTS:  
 "T017"  
 THE STATION IS LOCATED IN MARTIN COUNTY, FLORIDA IN THE MEDIAN OF U.S. HIGHWAY NO. 1, AT THE COUNTY LINE. THIS STATION LIES 20' SOUTH OF THE BULLNOSE, 7' EAST OF THE EDGE OF PAVEMENT OF THE SOUTHBOUND LANE, AND 1.5' NORTH OF A WITNESS POST.  
 N = 1,065,586.863  
 E = 898,108.453  
 "GCY D21"  
 THE STATION IS LOCATED IN MARTIN COUNTY, FLORIDA ON STATE ROAD 5, U.S. HIGHWAY NO. 1. TO REACH THE STATION FROM JENSEN BEACH BOULEVARD AND U.S. HIGHWAY NO. 1, GO SOUTH ON U.S. HIGHWAY NO. 1 FOR 1.1 MILES, THE STATION IS LOCATED 8.3' EAST OF THE EAST EDGE OF PAVEMENT, 51' NORTH OF TWO CULVERTS.  
 N = 1,053,539.090  
 E = 894,581.203  
 THE BEARINGS SHOWN HEREON ARE GRID BEARINGS BASED UPON THE MONUMENTS DESCRIBED ABOVE. THE DEED BEARINGS RECORDED IN O.R.B. 1777, PAGE 414, ARE ROTATED 00°00'58" COUNTERCLOCKWISE TO MATCH THE GRID BEARINGS SHOWN HEREON.
- WHERE DRAINAGE AND UTILITY EASEMENTS CROSS, DRAINAGE EASEMENTS SHALL TAKE PRECEDENCE.
- THERE SHALL BE NO BUILDING OR ANY KIND OF CONSTRUCTION OR TREES OR SHRUBS PLACED ON DRAINAGE EASEMENTS.
- THERE SHALL BE NO BUILDING OR ANY PERMANENT STRUCTURES PLACED ON UTILITY EASEMENTS.
- THE LANDS BOUND BY THIS SURVEY ARE LOCATED IN FLOOD ZONE "X" (AREAS OF 500-YEAR FLOOD; AREAS OF 100-YEAR FLOOD WITH AVERAGE DEPTHS OF LESS THAN 1 FOOT OR WITH DRAINAGE AREAS LESS THAN 1 SQUARE MILE; AND AREAS PROTECTED BY LEVEES FROM 100-YEAR FLOOD) PER F.E.M.A. FLOOD INSURANCE RATE MAP NUMBER 12085C0020F, EFFECTIVE DATE OF OCTOBER 4, 2002.

**LEGEND**

P.R.M.	PERMANENT REFERENCE MONUMENT
LB	LICENSED BUSINESS
CL	CENTER LINE
R	RADIUS
Δ	CENTRAL ANGLE
A	ARC LENGTH
(R)	RADIAL
(NR)	NON-RADIAL
■	SET PERMANENT REFERENCE MONUMENT
■	4"x4" CONCRETE MONUMENT
■	WITH DISK STAMPED "PRM-LB 6705"
●	PK NAIL AND DISK STAMPED " 6793"
(D)	DEED DATA
(GRID)	GRID BEARING
O.R.B.	OFFICIAL RECORDS BOOK
N=	NORTHING
E=	EASTING
PK NAIL	PARKER KALON NAIL
FPL	FLORIDA POWER & LIGHT COMPANY
TYP.	TYPICAL
PVC	POLYVINYL CHLORIDE
NGS	NATIONAL GEODETIC SURVEY

**CREECH**  
ENGINEERS, INC.  
CIVILIZATION ENGINEERED

2000 N.E. JENSEN BEACH BLVD., FLORIDA 34857 (772) 283-1413  
 4480 WEST EAU GALLE BLVD., MELBOURNE, FL 32934 (321) 286-8434  
 707 EAST PARK AVENUE, TALLAHASSEE, FL 32301 (850) 841-1705

BOARD OF PROFESSIONAL ENGINEERS, CERTIFICATE OF AUTHORIZATION NUMBER 8139  
 PROFESSIONAL SURVEYORS AND MAPPING, MEMBER CERTIFICATE NO. LB-88678