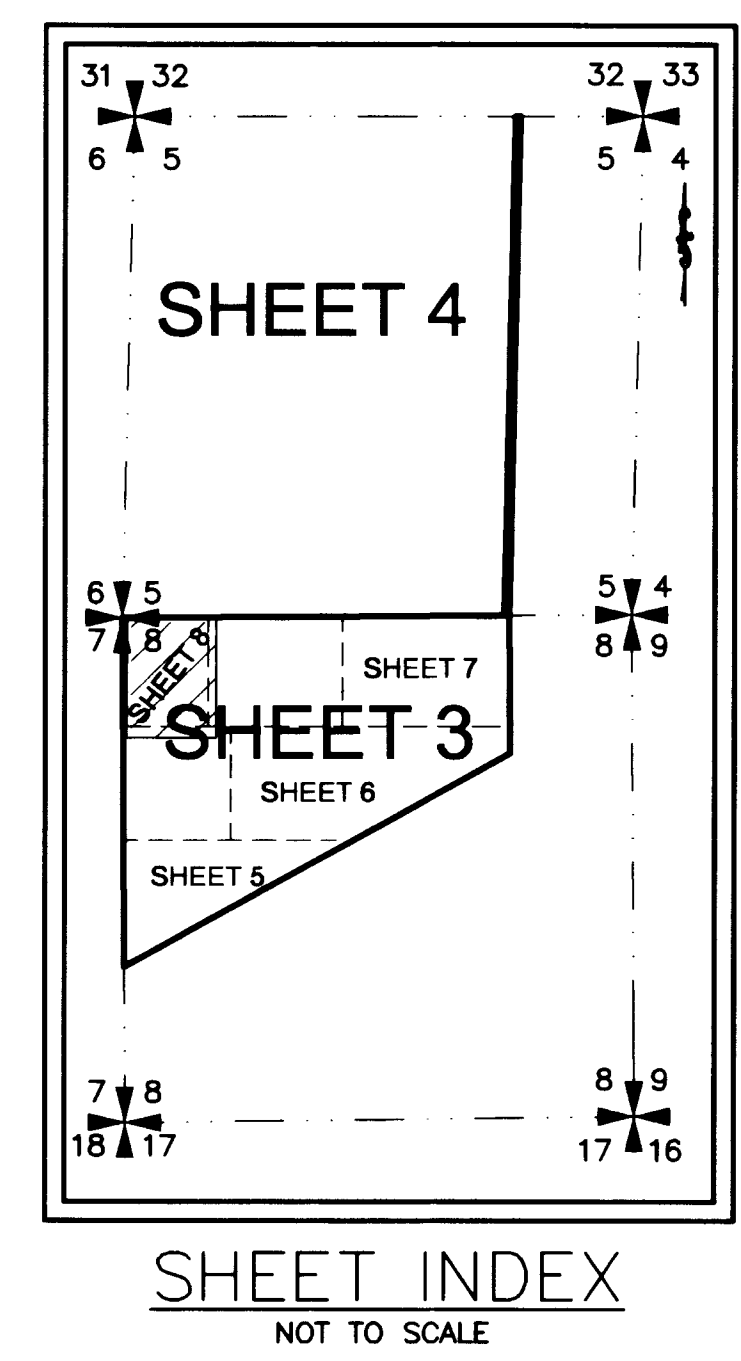
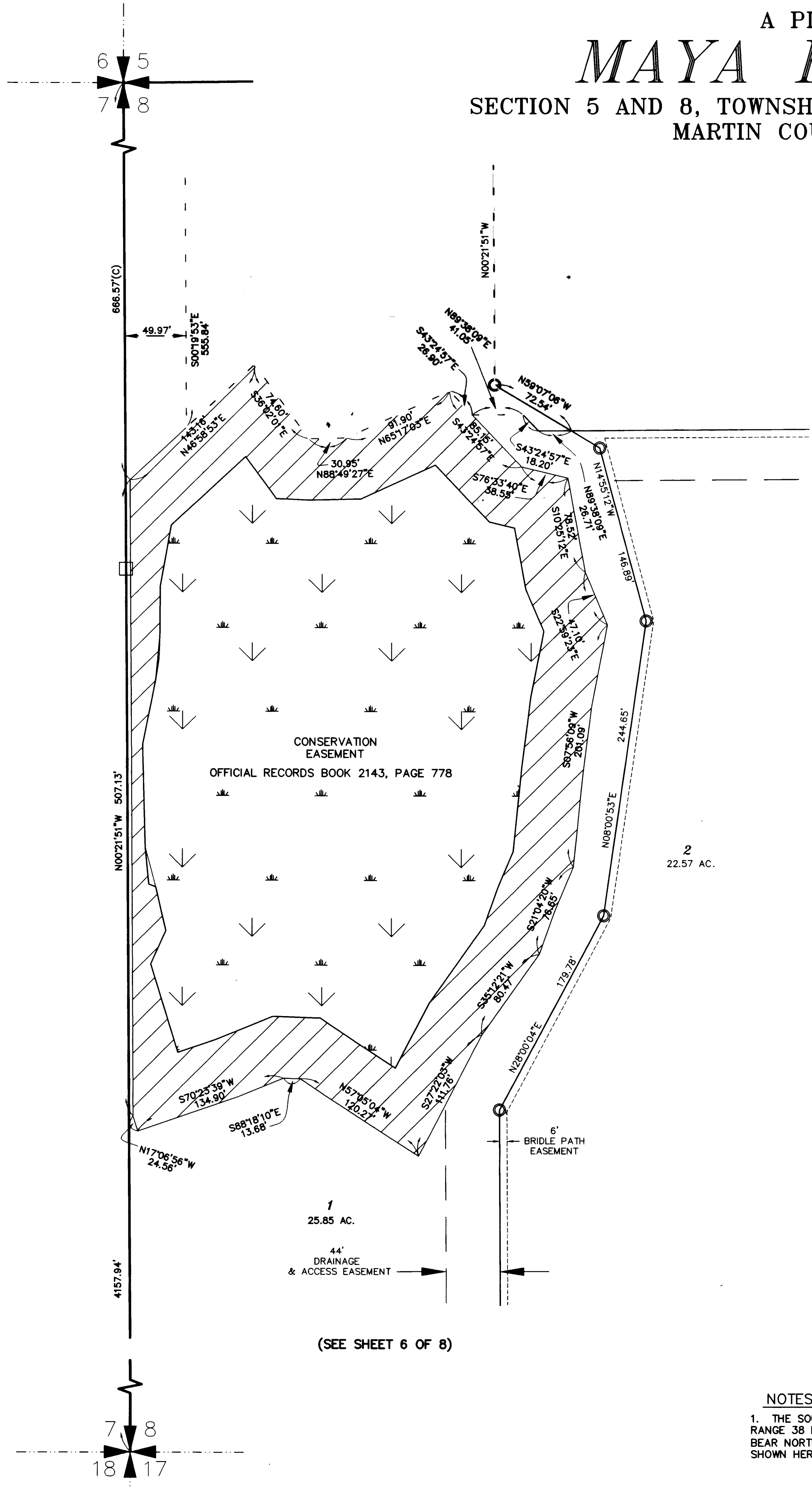


A PLAT OF
MAYA ESTATES
 SECTION 5 AND 8, TOWNSHIP 40 SOUTH, RANGE 38 EAST
 MARTIN COUNTY, FLORIDA



(SEE SHEET 7 OF 8)

(SEE SHEET 6 OF 8)

LEGEND

- CH - ARC CHORD LENGTH
- CB - ARC CHORD BEARING
- Δ - ARC DELTA
- L - ARC LENGTH
- R - ARC RADIUS
- D.E. - DRAINAGE EASEMENT
- O.R.B. - OFFICIAL RECORDS BOOK
- - SET 4" X 4" CONCRETE PERMANENT REFERENCE MONUMENT L.B. 959
- U.E. - UTILITY EASEMENT
- PRM - DENOTES P.R.M. (PERMANENT REFERENCE MONUMENT) NO. LB 959
- ⊙ - DENOTES P.C.P. (PERMANENT CONTROL POINT) NO. LB 959
- B.P.E. - DENOTES BRIDLE PATH EASEMENT
- PG - DENOTES PAGE
- AC - DENOTES ACRES
- (C) - DENOTES CALCULATED BASED UPON FIELD MEASUREMENTS
- CCR - DENOTES CERTIFIED CORNER RECORD
- - DENOTES FOUND CONCRETE MONUMENT AS NOTED
- PCP - DENOTES PERMANENT CONTROL POINT
- - DENOTES SET NAIL WITH DISK L.B.959
- L.B. - DENOTES LICENSED BUSINESS
- PSM - DENOTES PROFESSIONAL SURVEYOR AND MAPPER
- - DENOTES SET 5/8" IRON ROD AND CAP, LBFH LB959

THIS INSTRUMENT PREPARED BY:
 TED E. PHILLIPS P.S.M. 5932, STATE OF FLORIDA
 FOR
 L.B.F.H., INC.
 CONSULTING ENGINEERS, SURVEYORS & MAPPERS
 3550 S.W. CORPORATE PARKWAY
 PALM CITY, FLORIDA 34990
 LB 959

NOTES

1. THE SOUTH LINE OF SECTION 8, TOWNSHIP 40 SOUTH, RANGE 38 EAST, MARTIN COUNTY, FLORIDA, IS TAKEN TO BEAR NORTH 89°15'02" EAST AND ALL OTHER BEARINGS SHOWN HEREON ARE RELATIVE THERETO.