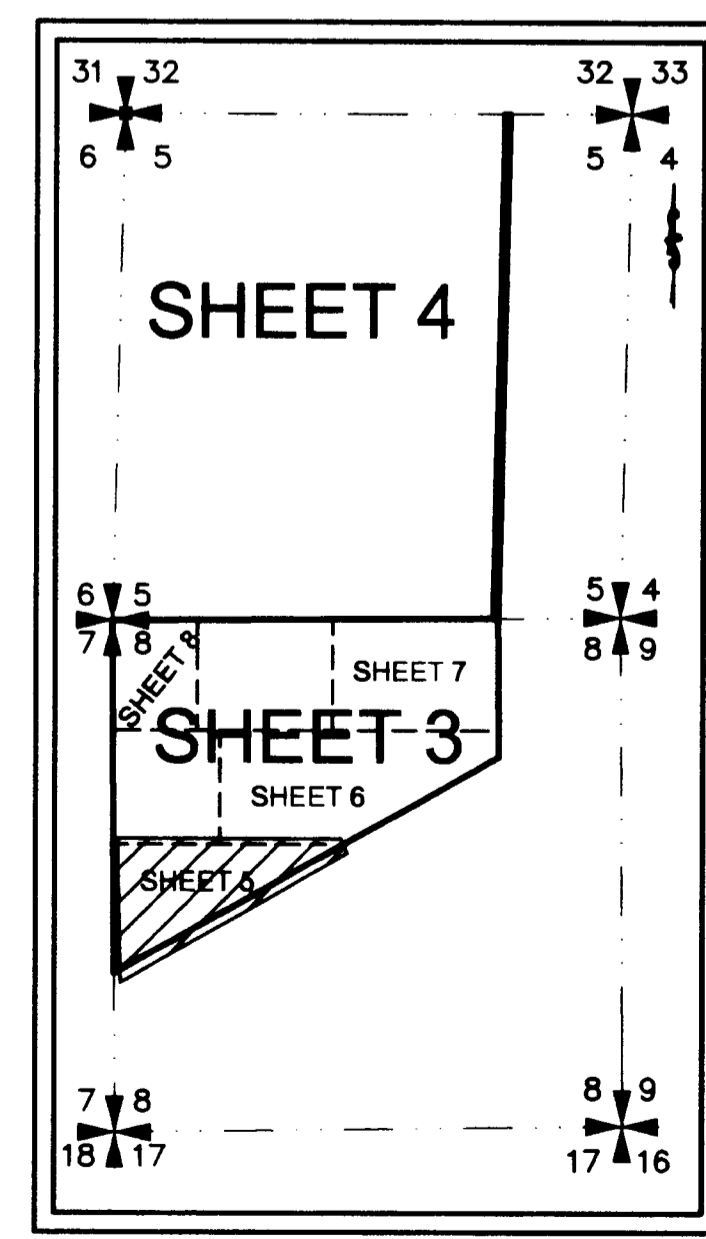
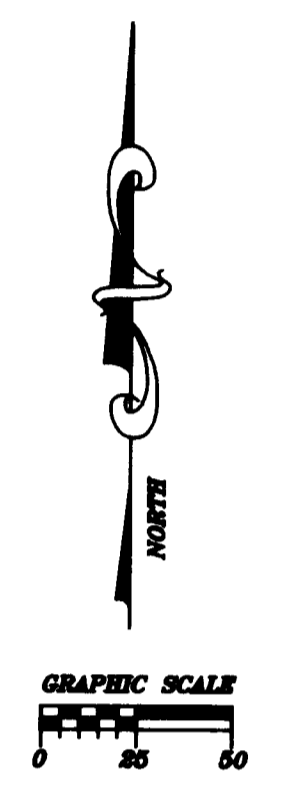
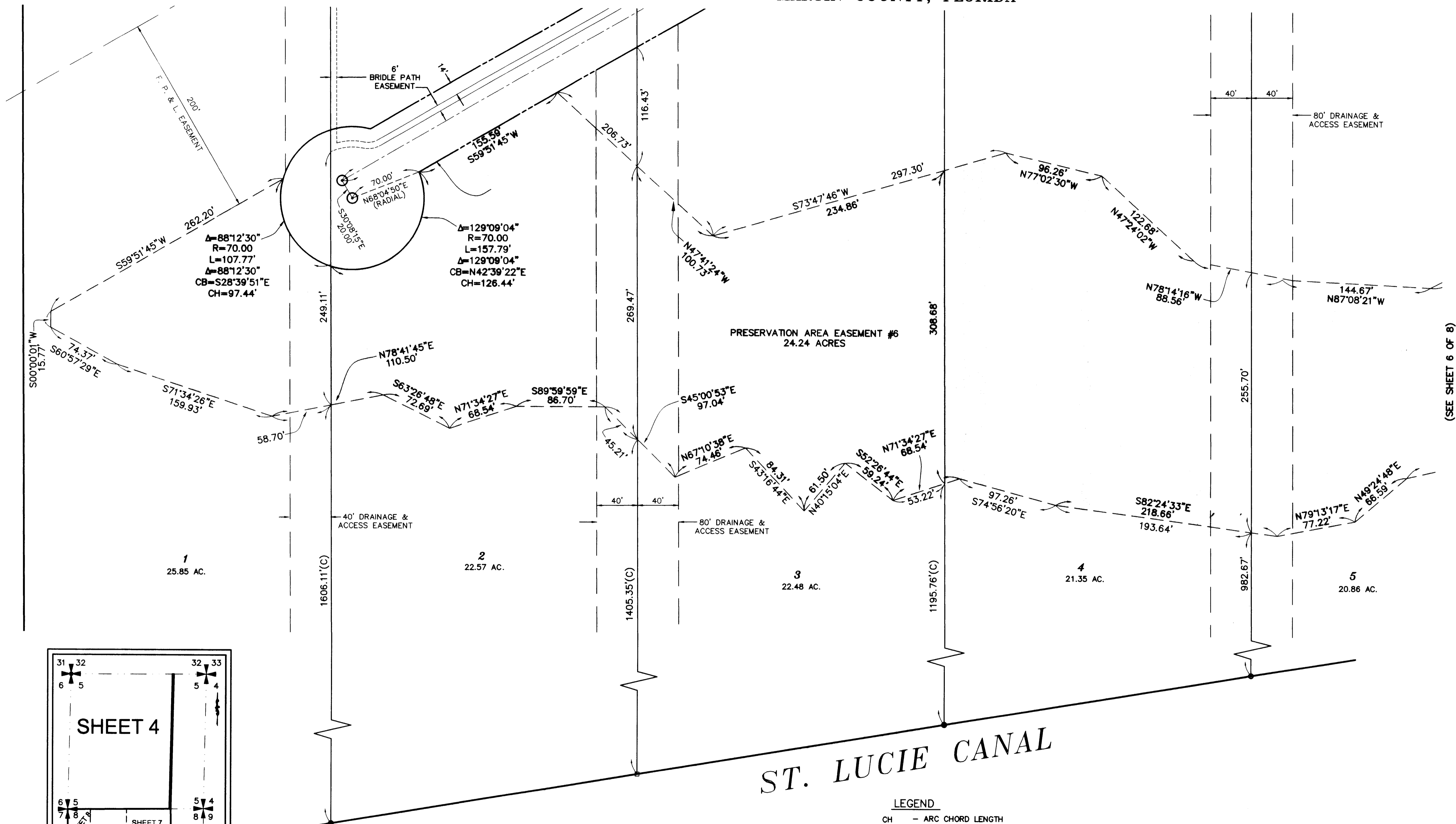


# A PLAT OF MAYA ESTATES

SECTION 5 AND 8, TOWNSHIP 40 SOUTH, RANGE 38 EAST  
MARTIN COUNTY, FLORIDA

(SEE SHEET 8 OF 8)



SHEET INDEX  
NOT TO SCALE

**NOTES**  
1. THE SOUTH LINE OF SECTION 8, TOWNSHIP 40 SOUTH, RANGE 38 EAST, MARTIN COUNTY, FLORIDA, IS TAKEN TO BEAR NORTH 89°15'02" EAST AND ALL OTHER BEARINGS SHOWN HEREON ARE RELATIVE THERETO.

- LEGEND**
- CH - ARC CHORD LENGTH
  - CB - ARC CHORD BEARING
  - Δ - ARC DELTA
  - L - ARC LENGTH
  - R - ARC RADIUS
  - D.E. - DRAINAGE EASEMENT
  - O.R.B. - OFFICIAL RECORDS BOOK
  - - SET 4" X 4" CONCRETE PERMANENT REFERENCE MONUMENT L.B. 959
  - U.E. - UTILITY EASEMENT
  - PRM - DENOTES P.R.M. (PERMANENT REFERENCE MONUMENT) NO. LB 959
  - ⊙ - DENOTES P.C.P. (PERMANENT CONTROL POINT) NO. LB 959
  - B.P.E. - DENOTES BRIDLE PATH EASEMENT
  - - DENOTES PAGE
  - AC - DENOTES ACRES
  - (C) - DENOTES CALCULATED BASED UPON FIELD MEASUREMENTS
  - CCR - DENOTES CERTIFIED CORNER RECORD
  - - DENOTES FOUND CONCRETE MONUMENT AS NOTED
  - - DENOTES PERMANENT CONTROL POINT
  - ⊙ - DENOTES SET NAIL WITH DISK L.B.959
  - L.B. - DENOTES LICENSED BUSINESS
  - P.S.M. - DENOTES PROFESSIONAL SURVEYOR AND MAPPER
  - - DENOTES SET 5/8" IRON ROD AND CAP, LBFH LB959

THIS INSTRUMENT PREPARED BY:  
TED E. PHILLIPS P.S.M. 5932, STATE OF FLORIDA  
FOR  
L.B.F.H., INC.  
CONSULTING ENGINEERS, SURVEYORS & MAPPERS  
3550 S.W. CORPORATE PARKWAY  
PALM CITY, FLORIDA 34990  
LB 959

CONSULTING CIVIL ENGINEERS, SURVEYORS & MAPPERS  
"Partners For Results. Value By Design"  
3550 S.W. Corporate Parkway, Palm City, Florida 34990  
(772) 286-3883 Fax: (772) 286-3825  
BPR & FBPE License No: 959 www.lbfh.com