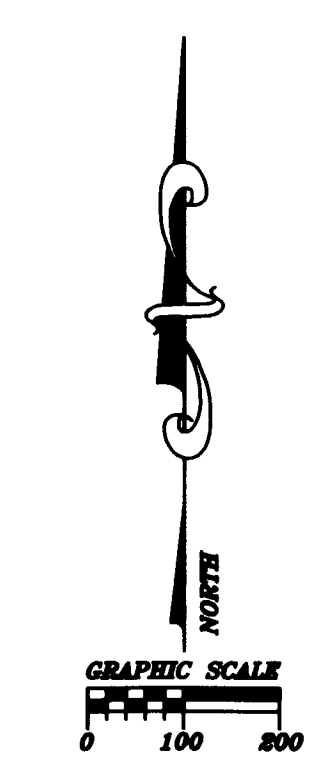
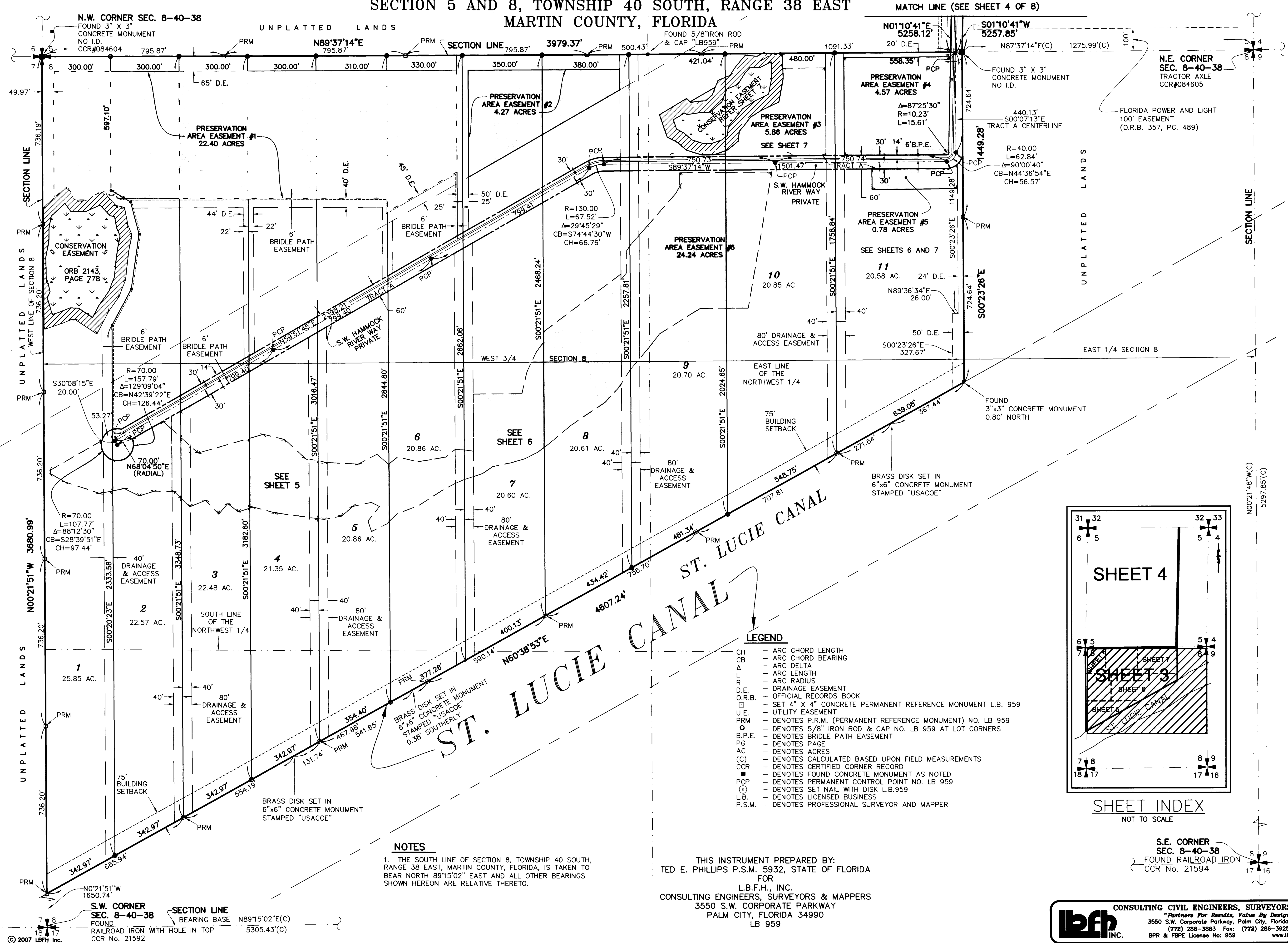
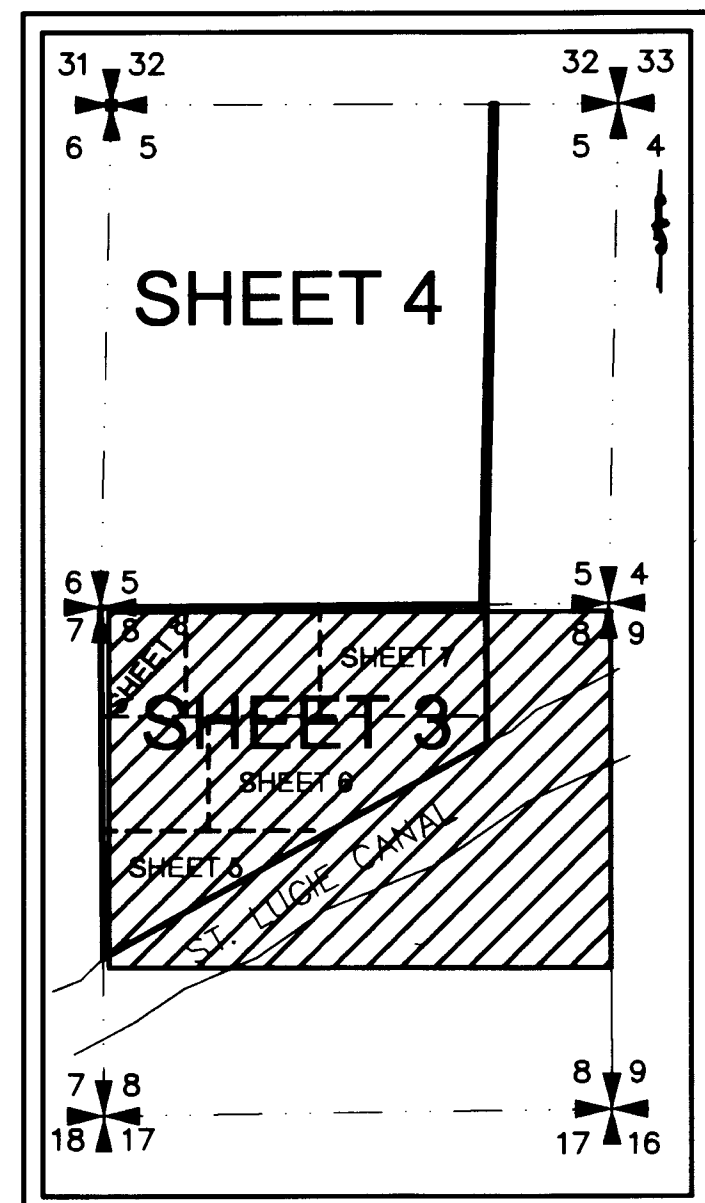


# A PLAT OF MAYA ESTATES SECTION 5 AND 8, TOWNSHIP 40 SOUTH, RANGE 38 EAST MARTIN COUNTY, FLORIDA



- LEGEND**
- CH - ARC CHORD LENGTH
  - CB - ARC CHORD BEARING
  - Δ - ARC DELTA
  - L - ARC LENGTH
  - R - ARC RADIUS
  - D.E. - DRAINAGE EASEMENT
  - O.R.B. - OFFICIAL RECORDS BOOK
  - ET - SET 4" X 4" CONCRETE PERMANENT REFERENCE MONUMENT L.B. 959
  - U.E. - UTILITY EASEMENT
  - PRM - DENOTES P.R.M. (PERMANENT REFERENCE MONUMENT) NO. LB 959
  - - DENOTES 5/8" IRON ROD & CAP NO. LB 959 AT LOT CORNERS
  - B.P.E. - DENOTES BRIDLE PATH EASEMENT
  - PG - DENOTES PAGE
  - AC - DENOTES ACRES
  - (C) - DENOTES CALCULATED BASED UPON FIELD MEASUREMENTS
  - CCR - DENOTES CERTIFIED CORNER RECORD
  - - DENOTES FOUND CONCRETE MONUMENT AS NOTED
  - - DENOTES PERMANENT CONTROL POINT NO. LB 959
  - ⊙ - DENOTES SET NAIL WITH DISK L.B.959
  - L.B. - DENOTES LICENSED BUSINESS
  - P.S.M. - DENOTES PROFESSIONAL SURVEYOR AND MAPPER



**SHEET INDEX**  
NOT TO SCALE

**NOTES**

1. THE SOUTH LINE OF SECTION 8, TOWNSHIP 40 SOUTH, RANGE 38 EAST, MARTIN COUNTY, FLORIDA, IS TAKEN TO BEAR NORTH 89°15'02" EAST AND ALL OTHER BEARINGS SHOWN HEREON ARE RELATIVE THERETO.

THIS INSTRUMENT PREPARED BY:  
TED E. PHILLIPS P.S.M. 5932, STATE OF FLORIDA  
FOR  
L.B.F.H., INC.  
CONSULTING ENGINEERS, SURVEYORS & MAPPERS  
3550 S.W. CORPORATE PARKWAY  
PALM CITY, FLORIDA 34990  
LB 959

S.E. CORNER  
SEC. 8-40-38  
FOUND RAILROAD IRON  
CCR No. 21594

N.W. CORNER SEC. 8-40-38  
FOUND 3" X 3" CONCRETE MONUMENT  
NO I.D.  
CCR#084604

S.W. CORNER  
SEC. 8-40-38  
FOUND RAILROAD IRON WITH HOLE IN TOP  
CCR No. 21592

SECTION LINE  
BEARING BASE N89°15'02"E(C)  
5305.43(C)

**lbh** CONSULTING CIVIL ENGINEERS, SURVEYORS & MAPPERS  
"Partners For Results, Value By Design"  
3550 S.W. Corporate Parkway, Palm City, Florida 34990  
(772) 286-3883 Fax: (772) 286-3925  
BPR & FBPE License No. 958 www.lbh.com