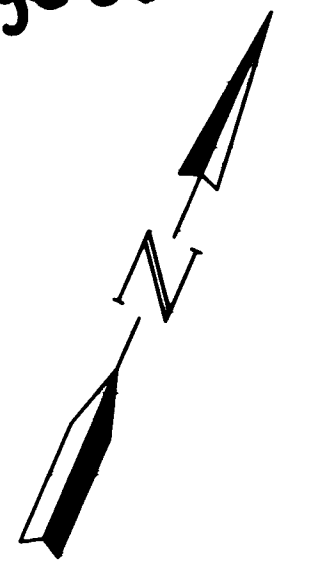
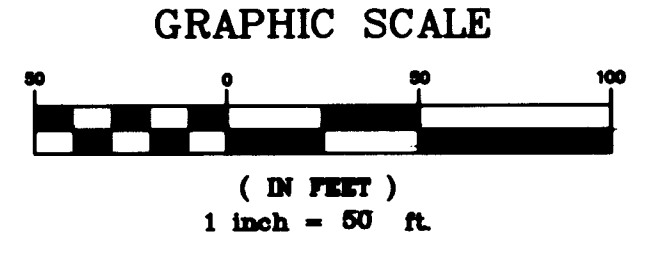


Plat of Salerno Village Square Shopping Center

Being a replat of a portion of Tracts 3 and 4, Block 74, St. Lucie Inlet Farms, as recorded in Plat Book 1, Page 98, public records of Palm Beach (now Martin) County, Florida.



LEGEND	
	SET 3/4" IRON PIPE WITH YELLOW CAP LABELED "GCY, INC. LB 4108"
	SET PERMANENT REFERENCE MONUMENT (PRM) 4"x4" CONCRETE MONUMENT WITH DISK LABELED "GCY INC. P.R.M. LB 4108, PSM 4864"
LB	LICENSED BUSINESS
O.R.B.	OFFICIAL RECORD BOOK
PSM	PROFESSIONAL SURVEYOR AND MAPPER
R/W	RIGHT-OF-WAY
FP&L	FLORIDA POWER AND LIGHT
P.B.	PLAT BOOK

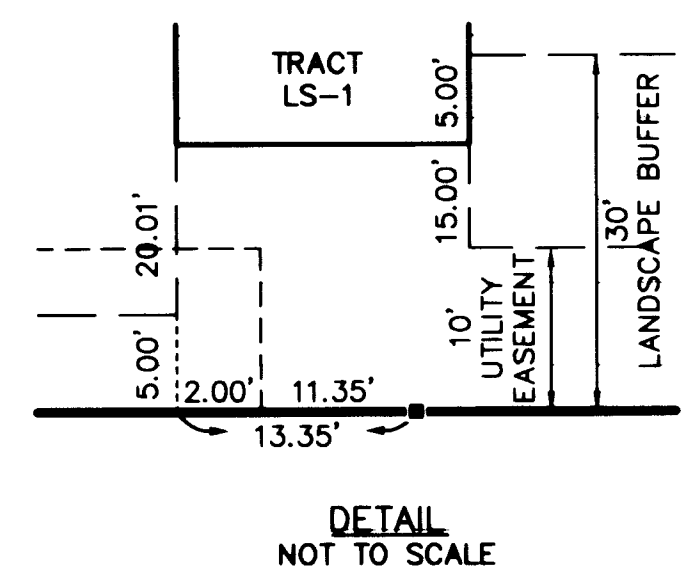
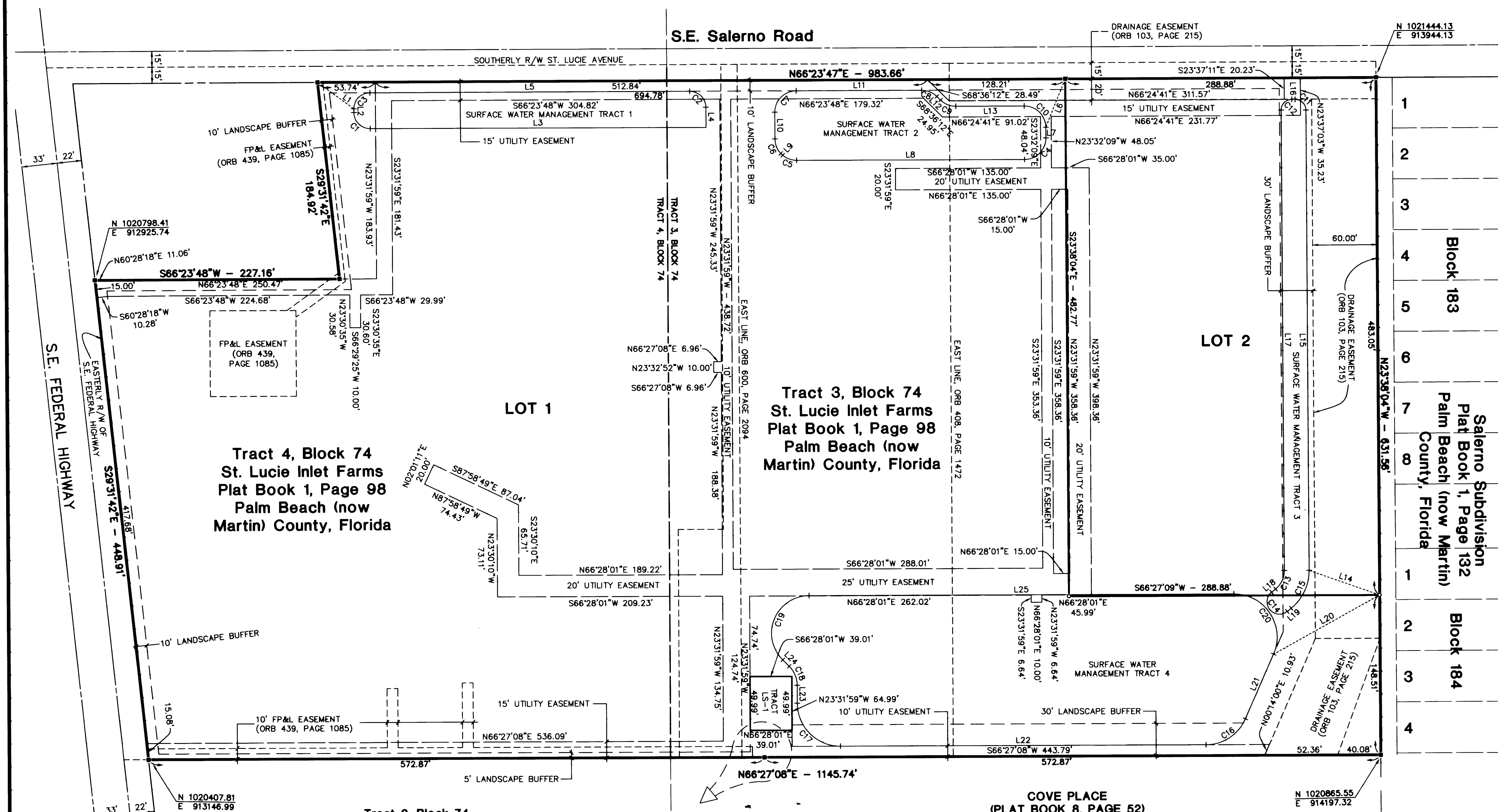


SURVEYOR'S NOTES

- 1) THIS PLAT, AS RECORDED IN ITS ORIGINAL FORM IN THE PUBLIC RECORDS, IS THE OFFICIAL DEPICTION OF THE SUBDIVIDED LANDS DESCRIBED HEREON AND WILL IN NO CIRCUMSTANCES BE SUPPLANTED IN AUTHORITY BY ANY OTHER FORM OF THIS PLAT, WHETHER GRAPHIC OR DIGITAL.
- 2) THERE MAY BE ADDITIONAL RESTRICTIONS THAT ARE NOT RECORDED ON THIS PLAT THAT MAY BE FOUND IN THE PUBLIC RECORDS OF THIS COUNTY.
- 3) BEARINGS SHOWN HEREON ARE REFERENCED TO THE EASTERLY RIGHT OF WAY LINE OF U.S. HIGHWAY NO. 1. SAID LINE BEARS SOUTH 29°31'42" EAST.

SURFACE WATER MANAGEMENT TRACTS LINE TABLE		
LINE	BEARING	DISTANCE
L1	S76°59'40"E	41.92'
L2	S23°36'12"E	3.51'
L3	N66°28'01"E	311.88'
L4	N23°31'59"W	18.88'
L5	S66°23'48"W	296.89'
L6	S01°35'41"E	48.74'
L7	S23°31'59"E	10.03'
L8	S66°28'01"W	212.00'
L9	N69°59'38"W	2.43'
L10	N23°31'59"W	24.93'
L11	N66°23'48"E	116.68'
L12	S68°36'12"E	4.85'
L13	N66°24'41"E	63.60'
L14	S85°55'22"W	69.50'
L15	N23°37'11"W	429.59'
L16	S66°24'41"W	3.00'
L17	S23°37'11"E	429.59'
L18	S27°46'29"W	4.69'
L19	N27°46'29"E	4.69'
L20	N37°31'42"E	113.05'
L21	S00°17'17"W	65.59'
L22	S66°27'08"W	339.93'
L23	N23°31'59"W	16.70'
L24	N68°31'59"W	8.44'
L25	N66°28'01"E	394.96'

SURFACE WATER MANAGEMENT TRACTS CURVE TABLE							
CURVE	CENTRAL ANGLE	RADIUS	LENGTH	CURVE	CENTRAL ANGLE	RADIUS	LENGTH
C1	89°55'47"	15.00'	23.54'	C11	89°58'08"	10.00'	15.70'
C2	90°04'13"	15.00'	23.58'	C12	90°01'52"	10.00'	15.71'
C3	90°00'00"	15.00'	23.56'	C13	51°23'40"	22.00'	19.73'
C4	90°00'00"	20.00'	31.42'	C14	180°00'00"	11.50'	36.13'
C5	40°03'07"	20.00'	13.98'	C15	51°23'40"	45.00'	40.37'
C6	42°58'26"	20.00'	15.00'	C16	66°09'51"	40.00'	46.19'
C7	89°55'47"	20.00'	31.39'	C17	90°00'53"	40.00'	62.84'
C8	45°00'00"	20.00'	15.71'	C18	45°00'00"	25.00'	19.63'
C9	44°59'07"	20.00'	15.70'	C19	135°00'00"	35.00'	82.47'
C10	90°03'20"	20.00'	31.44'	C20	113°49'16"	40.00'	79.46'



Job Number 05-1061-01
Licensed Business #4108

GCY INCORPORATED
PROFESSIONAL SURVEYORS AND MAPPERS
CERTIFICATE OF AUTHORIZATION LB 4108

CORPORATE OFFICE: TALLAHASSEE OFFICE
PO BOX 1469 • 1505 SW MARTIN HWY. 4808 N. MONROE STREET
PALM CITY, FL 34991 TALLAHASSEE, FL 32303
(800) 386-1066 (850) 536-8455