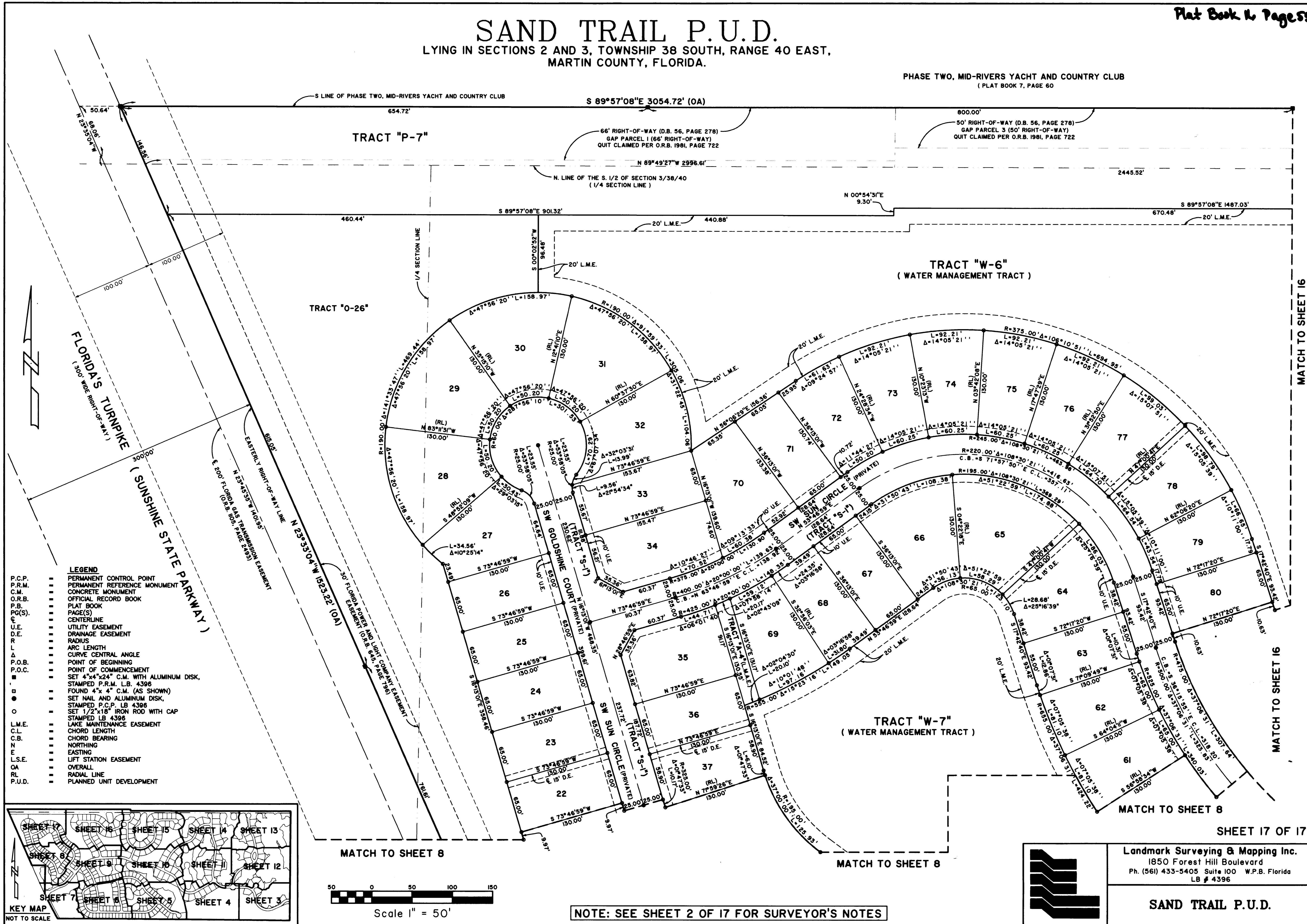


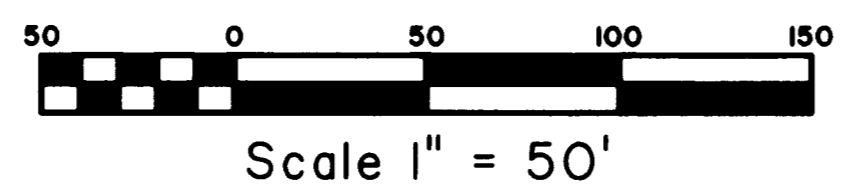
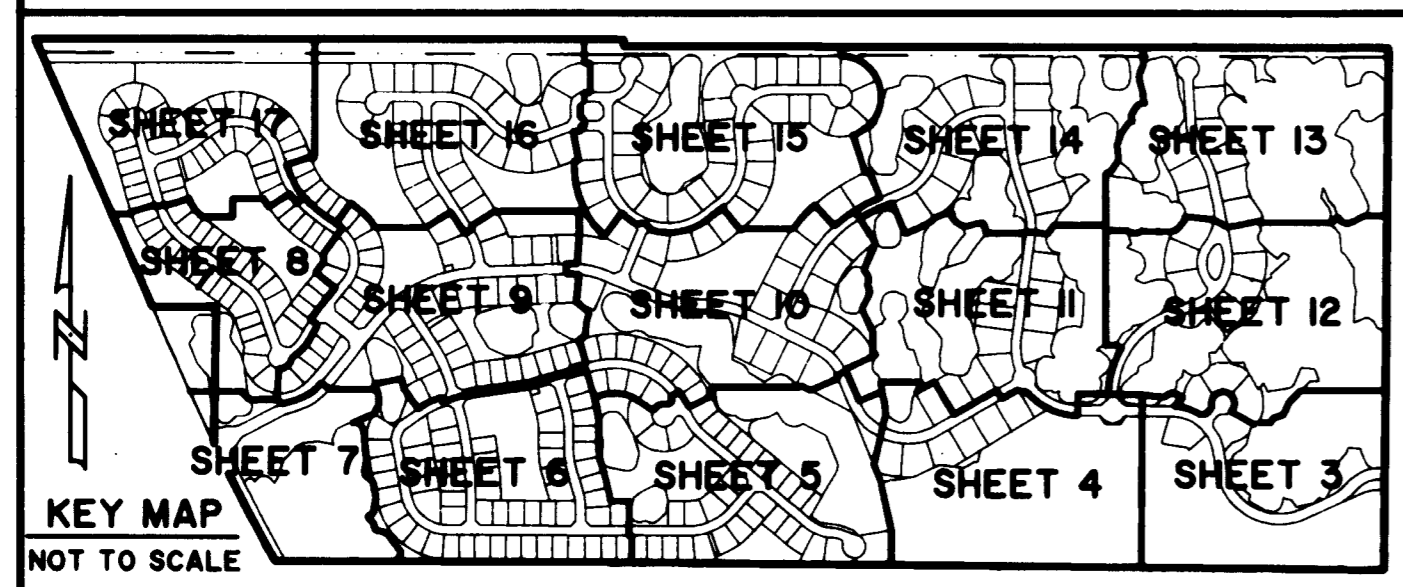
SAND TRAIL P.U.D.

LYING IN SECTIONS 2 AND 3, TOWNSHIP 38 SOUTH, RANGE 40 EAST,
MARTIN COUNTY, FLORIDA.

PHASE TWO, MID-RIVERS YACHT AND COUNTRY CLUB
(PLAT BOOK 7, PAGE 60)



- LEGEND**
- P.C.P. PERMANENT CONTROL POINT
 - P.R.M. PERMANENT REFERENCE MONUMENT
 - C.M. CONCRETE MONUMENT
 - O.R.B. OFFICIAL RECORD BOOK
 - P.B. PLAT BOOK
 - PG(S). PAGE(S)
 - C CENTERLINE
 - U.E. UTILITY EASEMENT
 - D.E. DRAINAGE EASEMENT
 - R RADIUS
 - A ARC LENGTH
 - Δ CURVE CENTRAL ANGLE
 - P.O.B. POINT OF BEGINNING
 - P.O.C. POINT OF COMMENCEMENT
 - SET 4"x4"x24" C.M. WITH ALUMINUM DISK, STAMPED P.R.M. LB. 4396
 - FOUND 4"x4" C.M. (AS SHOWN)
 - SET NAIL AND ALUMINUM DISK, STAMPED P.C.P. LB. 4396
 - SET 1/2"x18" IRON ROD WITH CAP, STAMPED LB. 4396
 - L.M.E. LAKE MAINTENANCE EASEMENT
 - C.L. CHORD LENGTH
 - C.B. CHORD BEARING
 - N NORTHING
 - E EASTING
 - L.S.E. LIFT STATION EASEMENT
 - OA OVERALL
 - RL RADIAL LINE
 - P.U.D. PLANNED UNIT DEVELOPMENT



NOTE: SEE SHEET 2 OF 17 FOR SURVEYOR'S NOTES

Landmark Surveying & Mapping Inc.
 1850 Forest Hill Boulevard
 Ph. (561) 433-5405 Suite 100 W.P.B. Florida
 LB # 4396

SAND TRAIL P.U.D.

G:\B\SPOTT\LEVIN\31\0851\2632\2632.M17 Thu Feb 15 16:56:20 2007 PLOTTED BY LESLIE C. BISHOPP