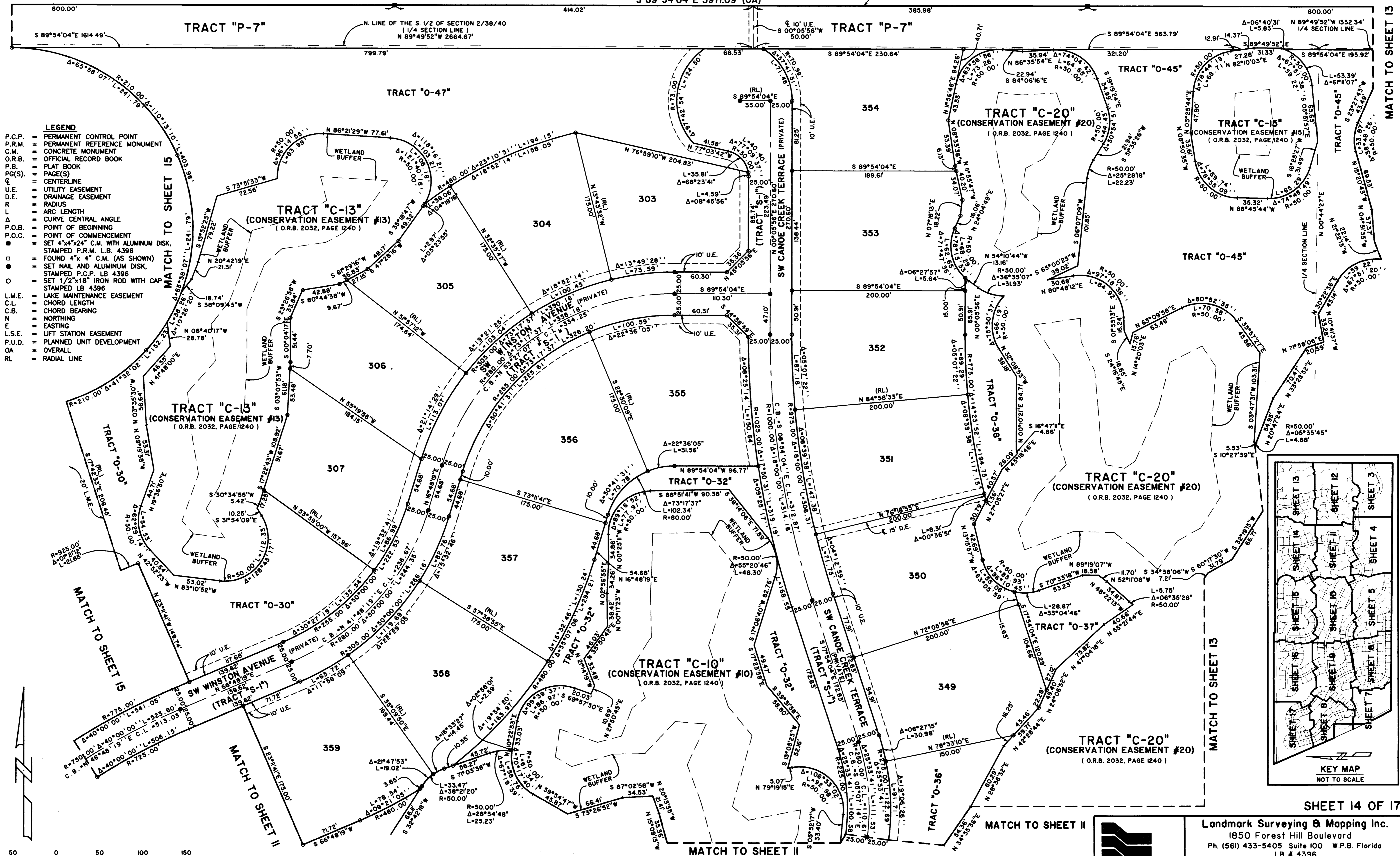


# SAND TRAIL P.U.D.

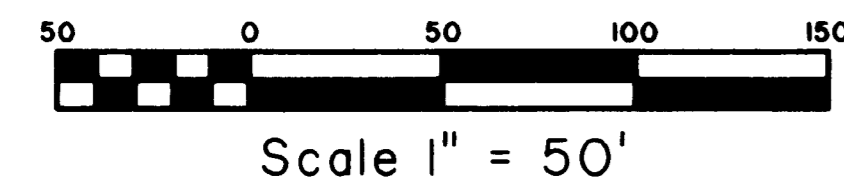
LYING IN SECTIONS 2 AND 3, TOWNSHIP 38 SOUTH, RANGE 40 EAST,  
MARTIN COUNTY, FLORIDA.

PHASE ONE, MID-RIVERS YACHT AND COUNTRY CLUB  
(PLAT BOOK 7, PAGE 23)

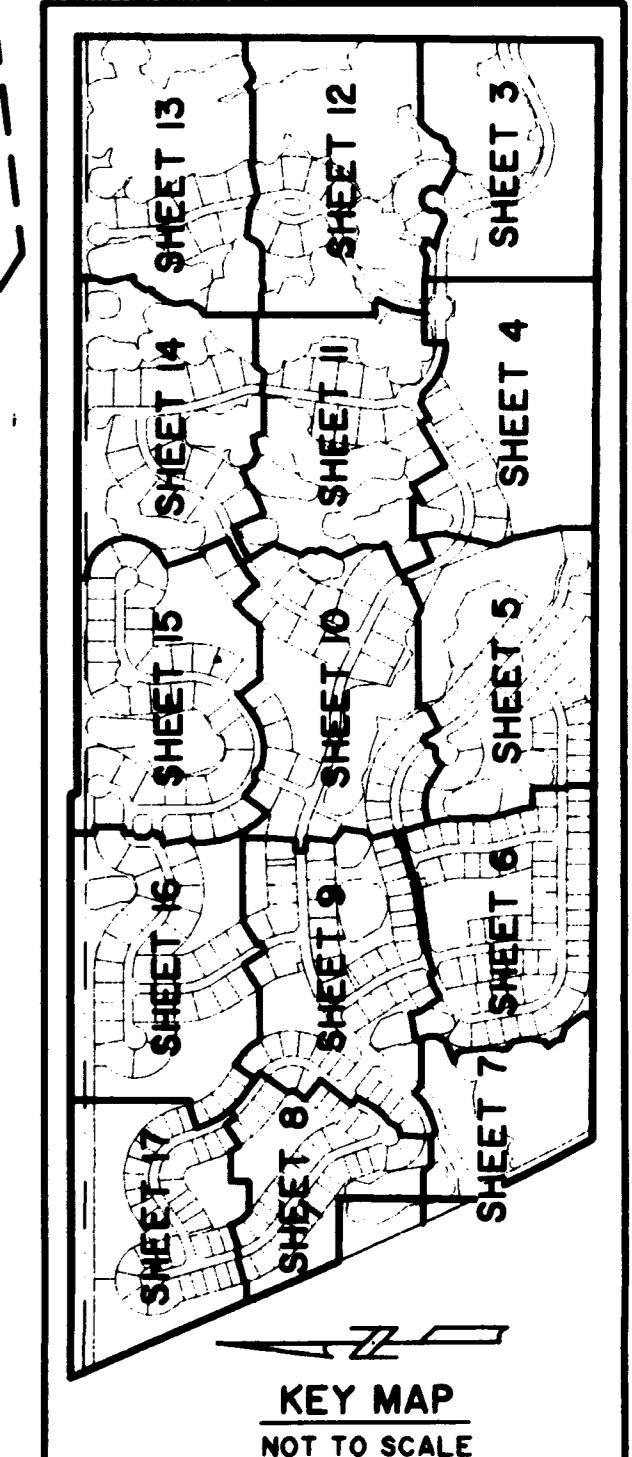
S LINE OF PHASE ONE, MID-RIVERS YACHT AND COUNTRY CLUB



- LEGEND**
- P.C.P. PERMANENT CONTROL POINT
  - P.R.M. PERMANENT REFERENCE MONUMENT
  - C.M. CONCRETE MONUMENT
  - O.R.B. OFFICIAL RECORD BOOK
  - P.B. PLAT BOOK
  - PG(S). PAGE(S)
  - C.L. CENTERLINE
  - U.E. UTILITY EASEMENT
  - D.E. DRAINAGE EASEMENT
  - R. RADIUS
  - L. ARC LENGTH
  - Δ. CURVE CENTRAL ANGLE
  - P.O.B. POINT OF BEGINNING
  - P.O.C. POINT OF COMMENCEMENT
  - SET 4"x4"x24" C.M. WITH ALUMINUM DISK, STAMPED P.R.M. I.B. 4396
  - FOUND 4"x4" C.M. (AS SHOWN)
  - SET NAIL AND ALUMINUM DISK, STAMPED P.C.P. LB 4396
  - SET 1/2"x18" IRON ROD WITH CAP, STAMPED LB 4396
  - L.M.E. LAKE MAINTENANCE EASEMENT
  - C.L. CHORD LENGTH
  - C.B. CHORD BEARING
  - N. NORTHING
  - E. EASTING
  - L.S.E. LIFT STATION EASEMENT
  - P.U.D. PLANNED UNIT DEVELOPMENT
  - OA. OVERALL
  - RL. RADIAL LINE



NOTE: SEE SHEET 2 OF 17 FOR SURVEYOR'S NOTES



SHEET 14 OF 17

Landmark Surveying & Mapping Inc.  
1850 Forest Hill Boulevard  
Ph. (561) 433-5405 Suite 100 W.P.B. Florida  
LB # 4396

SAND TRAIL P.U.D.

C:\BSPOTT\EP\IN\3\ORIS\2632\2632S\_14 Tue Apr 13 16:03:34 2007 PLOTTED BY LESLIE C. BJSPOTT