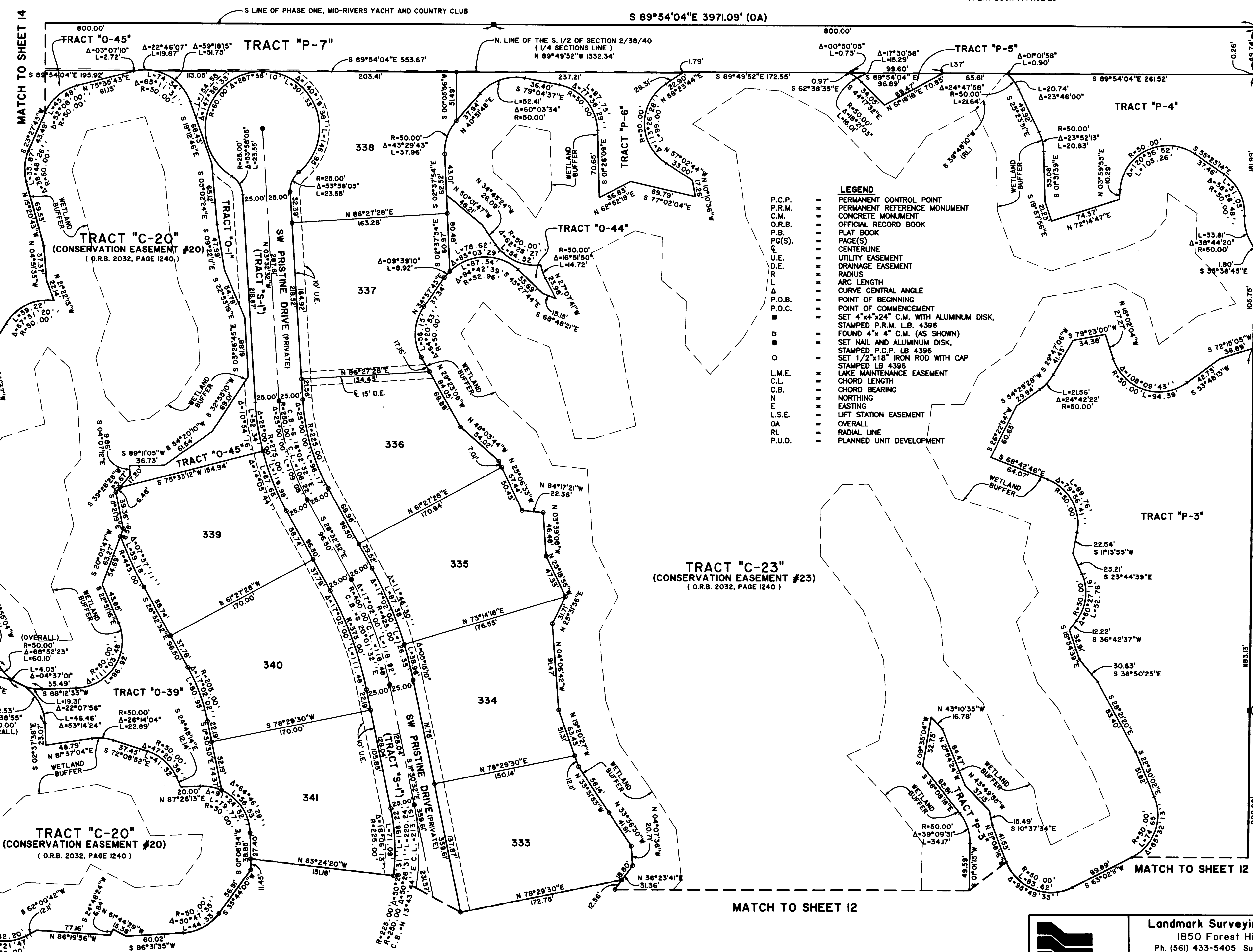
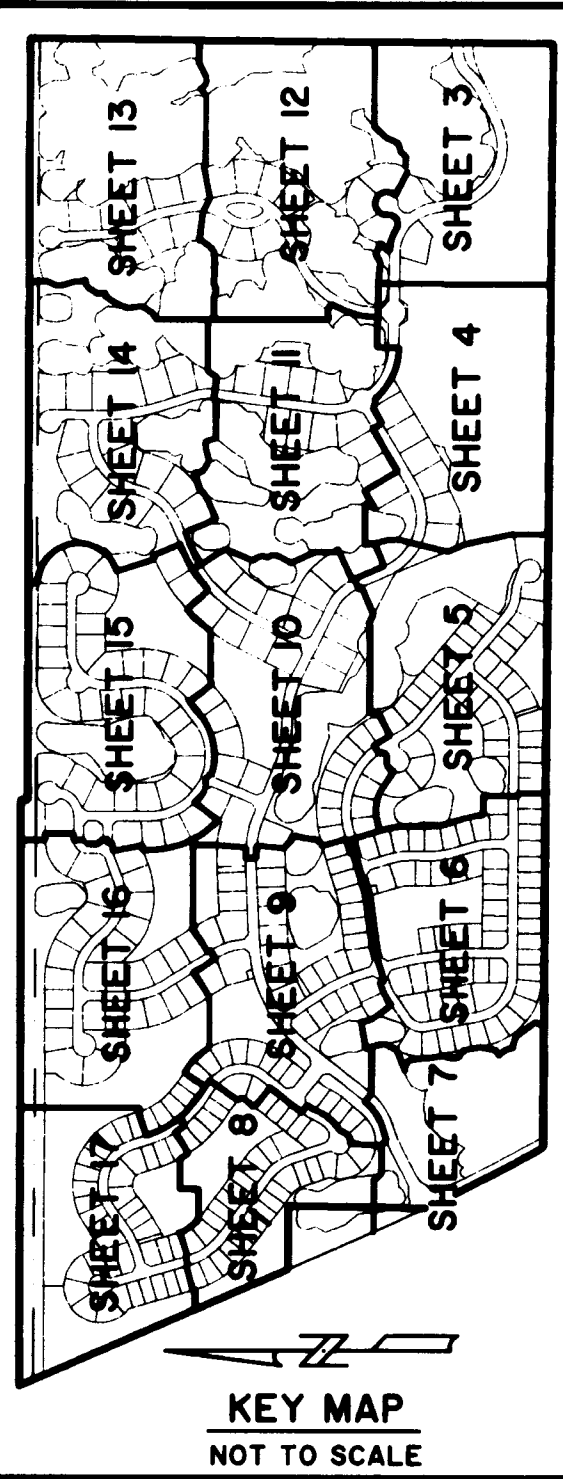


# SAND TRAIL P.U.D.

LYING IN SECTIONS 2 AND 3, TOWNSHIP 38 SOUTH, RANGE 40 EAST,  
MARTIN COUNTY, FLORIDA.

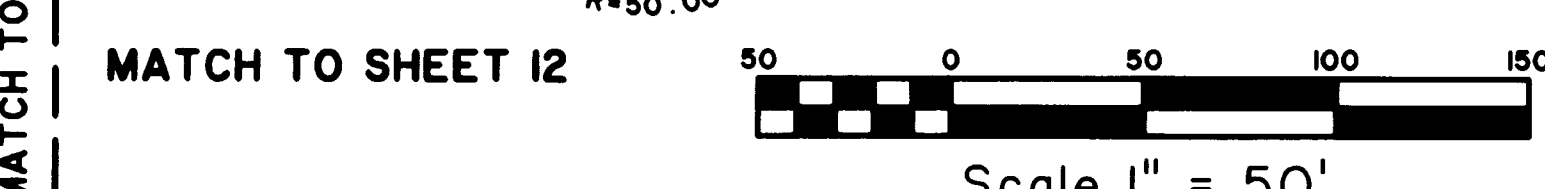
PHASE ONE, MID-RIVERS YACHT AND COUNTRY CLUB  
(PLAT BOOK 7, PAGE 23)



- LEGEND**
- P.C.P. PERMANENT CONTROL POINT
  - P.R.M. PERMANENT REFERENCE MONUMENT
  - C.M. CONCRETE MONUMENT
  - O.R.B. OFFICIAL RECORD BOOK
  - P.B. PLAT BOOK
  - PG(S) PAGE(S)
  - CL CENTERLINE
  - U.E. UTILITY EASEMENT
  - D.E. DRAINAGE EASEMENT
  - R. RADIUS
  - L. ARC LENGTH
  - Δ. CURVE CENTRAL ANGLE
  - P.O.B. POINT OF BEGINNING
  - P.O.C. POINT OF COMMENCEMENT
  - SET 4"x4"x24" C.M. WITH ALUMINUM DISK, STAMPED P.R.M. L.B. 4396
  - FOUND 4" x 4" C.M. (AS SHOWN)
  - SET NAIL AND ALUMINUM DISK, STAMPED P.C.P. LB 4396
  - SET 1/2"x18" IRON ROD WITH CAP STAMPED LB 4396
  - LAKE MAINTENANCE EASEMENT
  - CHORD LENGTH
  - CHORD BEARING
  - NORTHING
  - EASTING
  - L.S.E. LIFT STATION EASEMENT
  - O.A. OVERALL
  - R.L. RADIAL LINE
  - P.U.D. PLANNED UNIT DEVELOPMENT

NOT PLATTED  
FOUND 4" x 4" C.M. NO IDENTIFICATION

WESTWOOD COUNTRY ESTATES  
(PLAT BOOK 12, PAGE 62)  
REPLAT OF A PORTION WESTWOOD COUNTRY ESTATES  
(PLAT BOOK 15, PAGE 3)



NOTE: SEE SHEET 2 OF 17 FOR SURVEYOR'S NOTES



Landmark Surveying & Mapping Inc.  
1850 Forest Hill Boulevard  
Ph. (561) 433-5405 Suite 100 W.P.B. Florida  
LB # 4396

SAND TRAIL P.U.D.

0: \LISP\SP\PLM\3\J065\2632\2635\_13 Thu Feb 15 17:20:26 2007 PLOTTED BY LESLIE C. BISPOTT