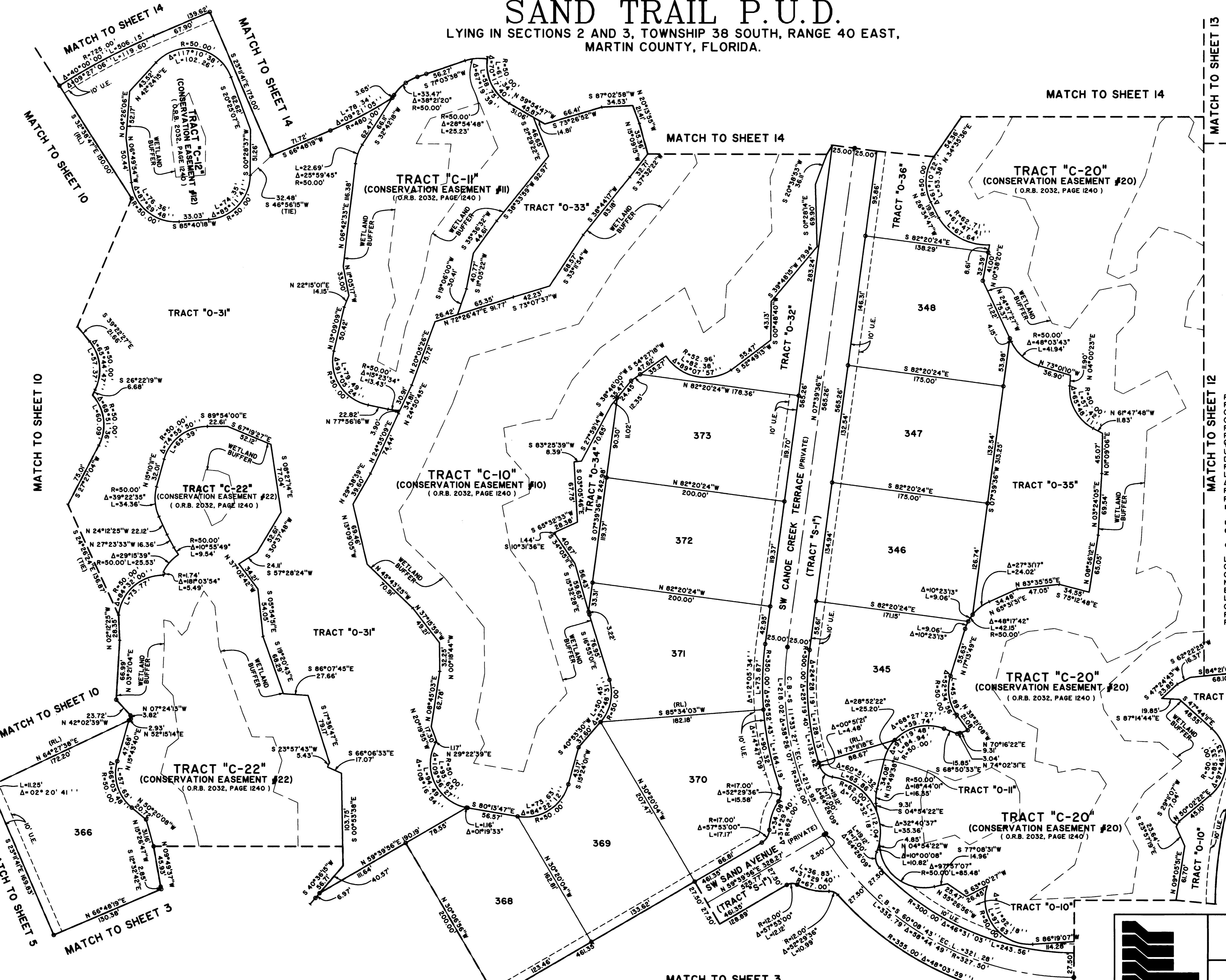
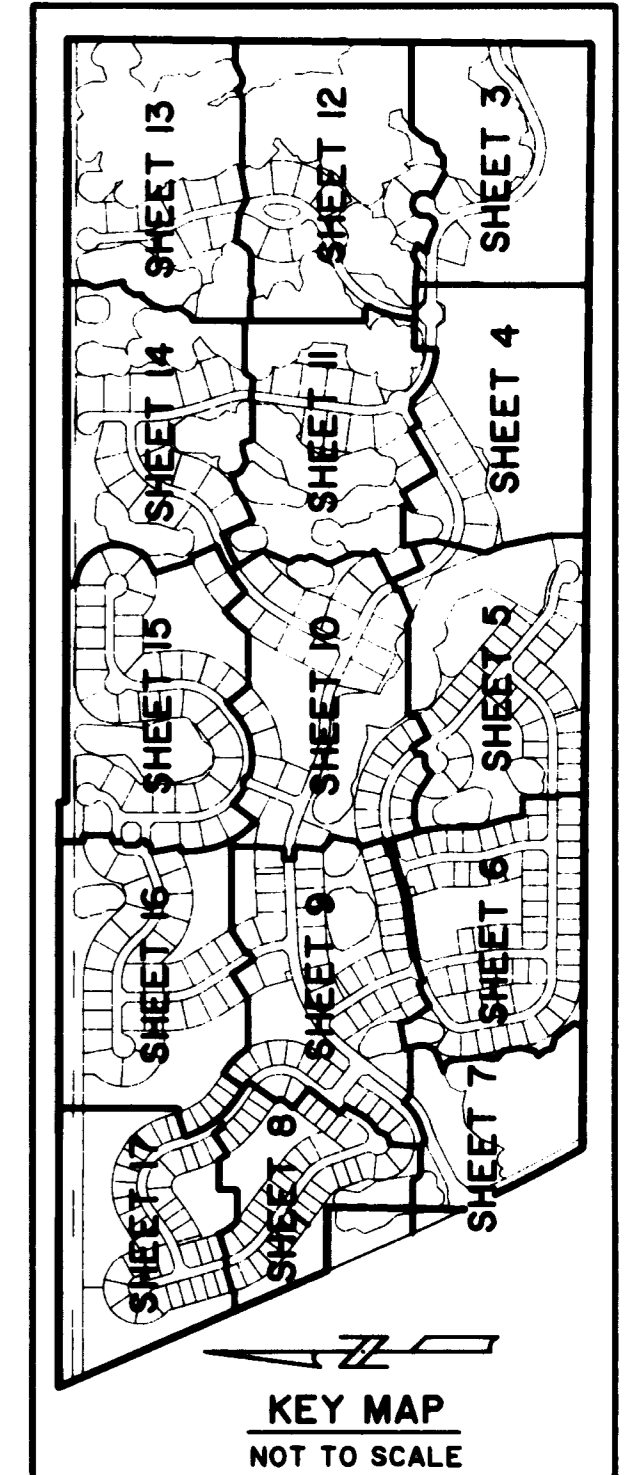
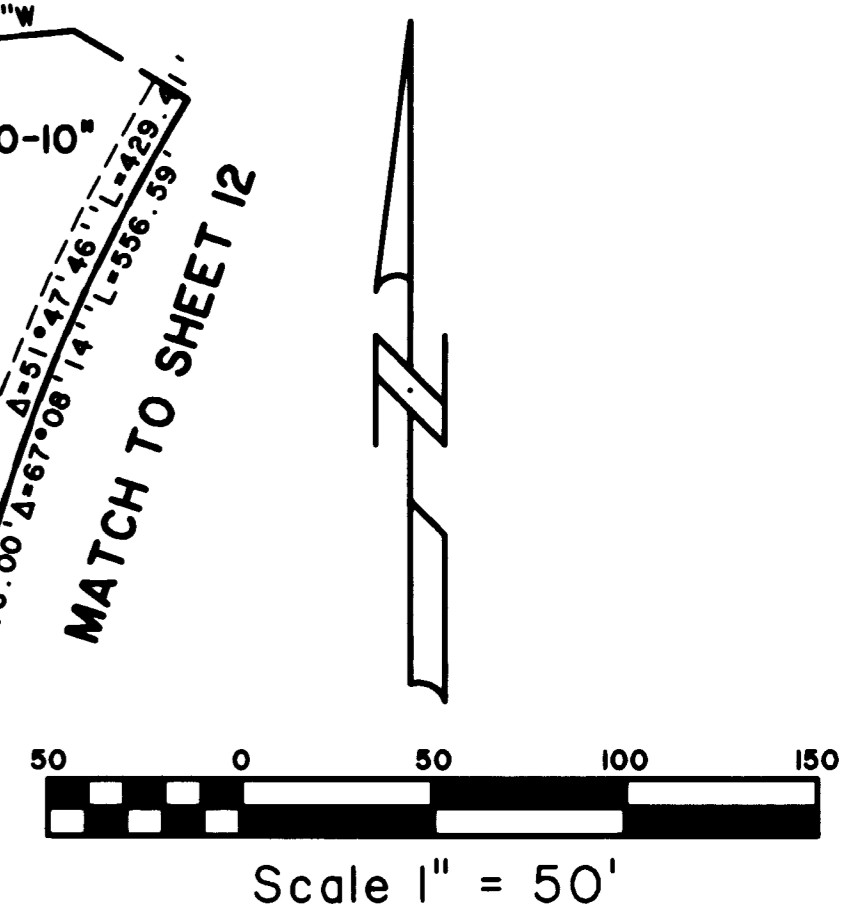


SAND TRAIL P.U.D.

LYING IN SECTIONS 2 AND 3, TOWNSHIP 38 SOUTH, RANGE 40 EAST,
MARTIN COUNTY, FLORIDA.



- LEGEND**
- P.C.P. PERMANENT CONTROL POINT
 - P.R.M. PERMANENT REFERENCE MONUMENT
 - C.M. CONCRETE MONUMENT
 - O.R.B. OFFICIAL RECORD BOOK
 - P.B. PLAT BOOK
 - PG(S) PAGE(S)
 - C.L. CENTERLINE
 - U.E. UTILITY EASEMENT
 - D.E. DRAINAGE EASEMENT
 - RADIUS RADIUS
 - ARC LENGTH ARC LENGTH
 - CURVE CENTRAL ANGLE CURVE CENTRAL ANGLE
 - POINT OF BEGINNING POINT OF BEGINNING
 - POINT OF COMMENCEMENT POINT OF COMMENCEMENT
 - SET 4"x4"x24" C.M. WITH ALUMINUM DISK, STAMPED P.R.M. L.B. 4396 FOUND 4"x4"x4" C.M. (AS SHOWN) SET NAIL AND ALUMINUM DISK, STAMPED P.C.P. LB 4396 SET 1/2"x18" IRON ROD WITH CAP STAMPED LB 4396
 - LAKE MAINTENANCE EASEMENT LAKE MAINTENANCE EASEMENT
 - CHORD LENGTH CHORD LENGTH
 - C.B. CHORD BEARING
 - NORTHING NORTHING
 - EASTING EASTING
 - L.S.E. LIFT STATION EASEMENT
 - OA OVERALL
 - RL RADIAL LINE
 - P.U.D. PLANNED UNIT DEVELOPMENT



SHEET II OF 17

Landmark Surveying & Mapping Inc.
1850 Forest Hill Boulevard
Ph. (561) 433-5405 Suite 100 W.P.B. Florida
LB # 4396

SAND TRAIL P.U.D.

NOTE: SEE SHEET 2 OF 17 FOR SURVEYOR'S NOTES

© LANDSPOTTLE.COM 1/13/05 11:30 AM PLOTTED BY LESLIE C. BISHOP