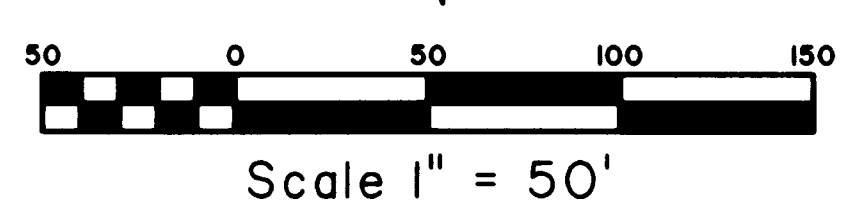
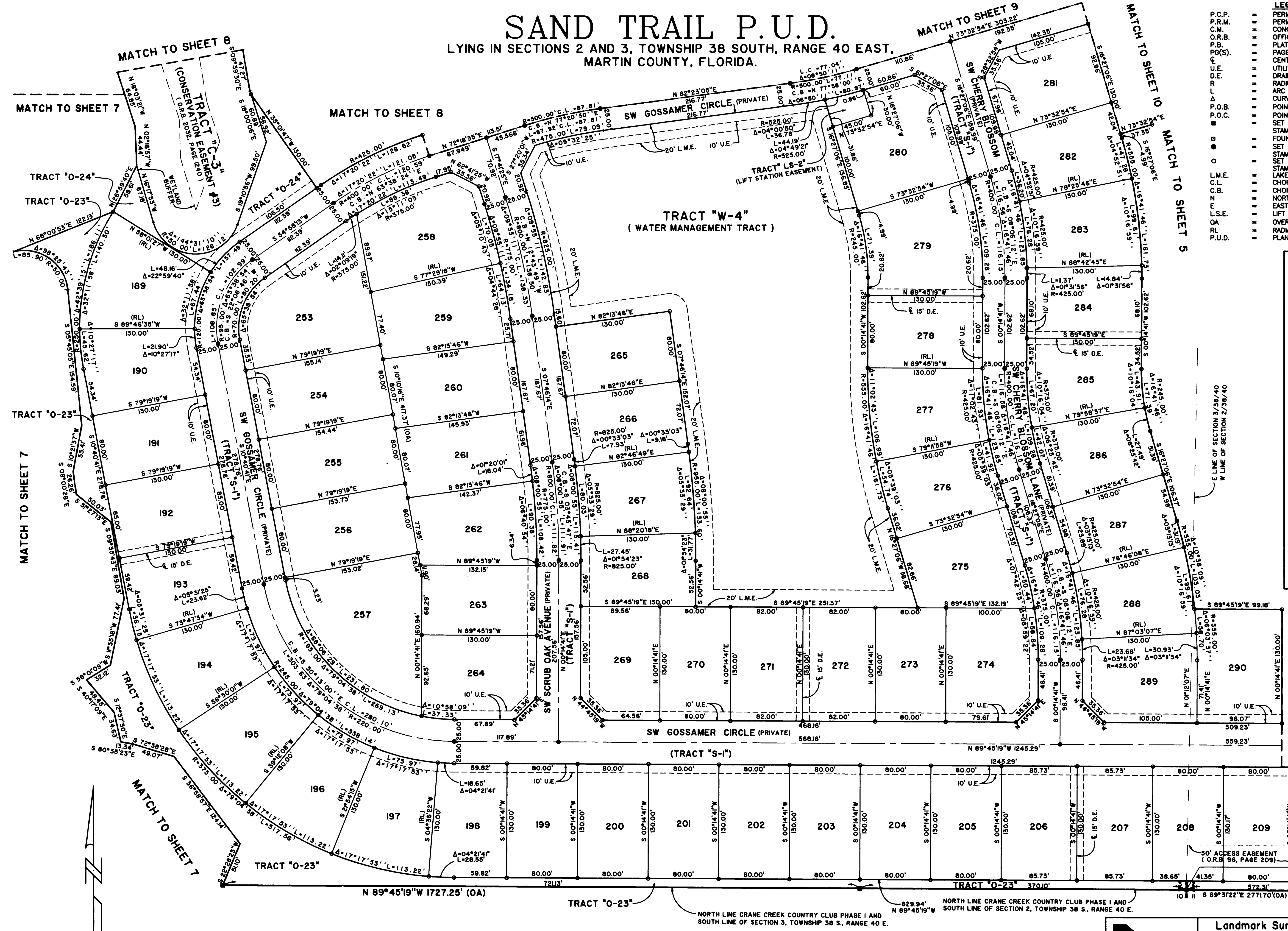
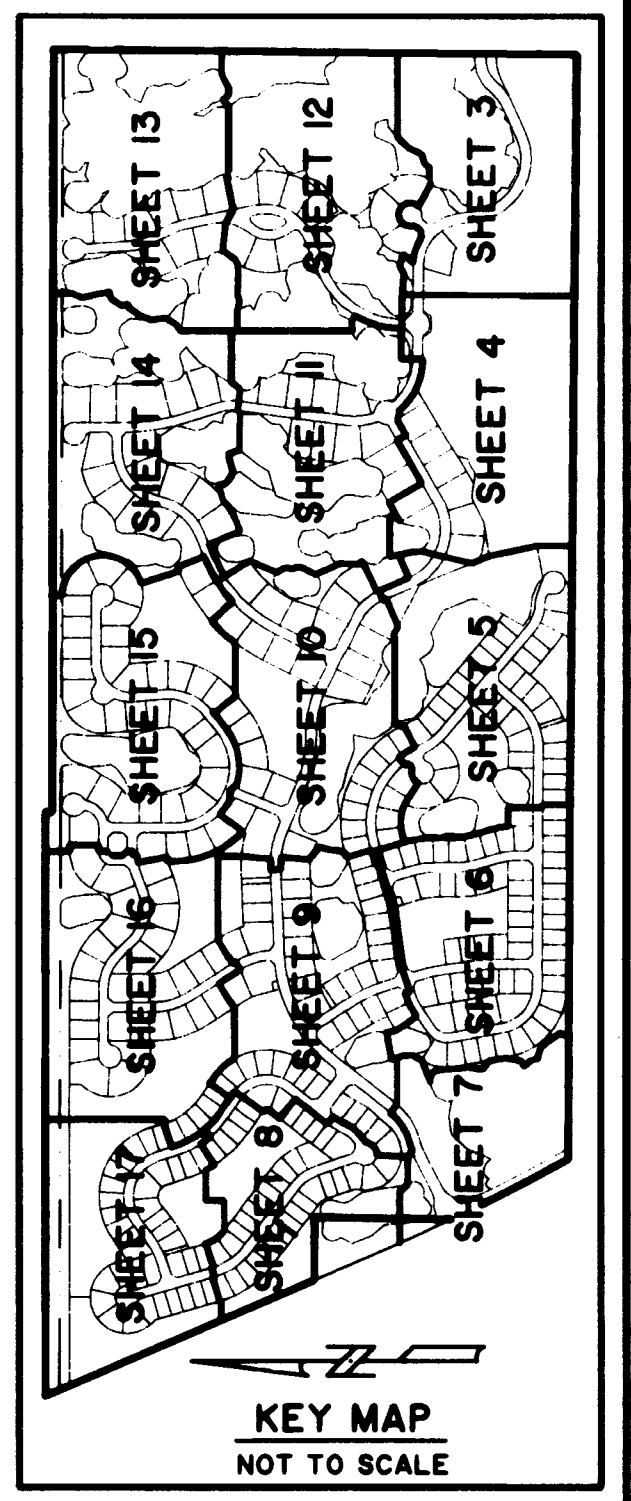


SAND TRAIL P.U.D.

LYING IN SECTIONS 2 AND 3, TOWNSHIP 38 SOUTH, RANGE 40 EAST,
MARTIN COUNTY, FLORIDA.

- LEGEND** *Plat Book to Page 55*
- PERMANENT CONTROL POINT
 - PERMANENT REFERENCE MONUMENT
 - CONCRETE MONUMENT
 - OFFICIAL RECORD BOOK
 - PLAT BOOK
 - PAGE(S)
 - CENTERLINE
 - UTILITY EASEMENT
 - DRAINAGE EASEMENT
 - RADIUS
 - ARC LENGTH
 - CURVE CENTRAL ANGLE
 - POINT OF BEGINNING
 - POINT OF COMMENCEMENT
 - SET 4" x 4" C.M. WITH ALUMINUM DISK, STAMPED P.R.M. LB. 4396
 - FOUND 4" x 4" C.M. (AS SHOWN)
 - SET NAIL AND ALUMINUM DISK, STAMPED P.C.P. LB. 4396
 - SET 1/2" x 18" IRON ROD WITH CAP STAMPED LB. 4396
 - LAKE MAINTENANCE EASEMENT
 - CHORD LENGTH
 - CHORD BEARING
 - NORTHING
 - EASTING
 - LIFT STATION EASEMENT
 - OVERALL
 - RADIAL LINE
 - PLANNED UNIT DEVELOPMENT



NOTE: SEE SHEET 2 OF 17 FOR SURVEYOR'S NOTES

Landmark Surveying & Mapping Inc.
1850 Forest Hill Boulevard
Ph. (561) 433-5405 Suite 100 W.P.B. Florida
LB # 4396

SAND TRAIL P.U.D.

SHEET 6 OF 17

D:\BISPOTT\LP\IN\13\085\2632\2635_6 F11 Feb 16 08:54:20 2007 PLOTTED BY LESLIE C. BISPOTT