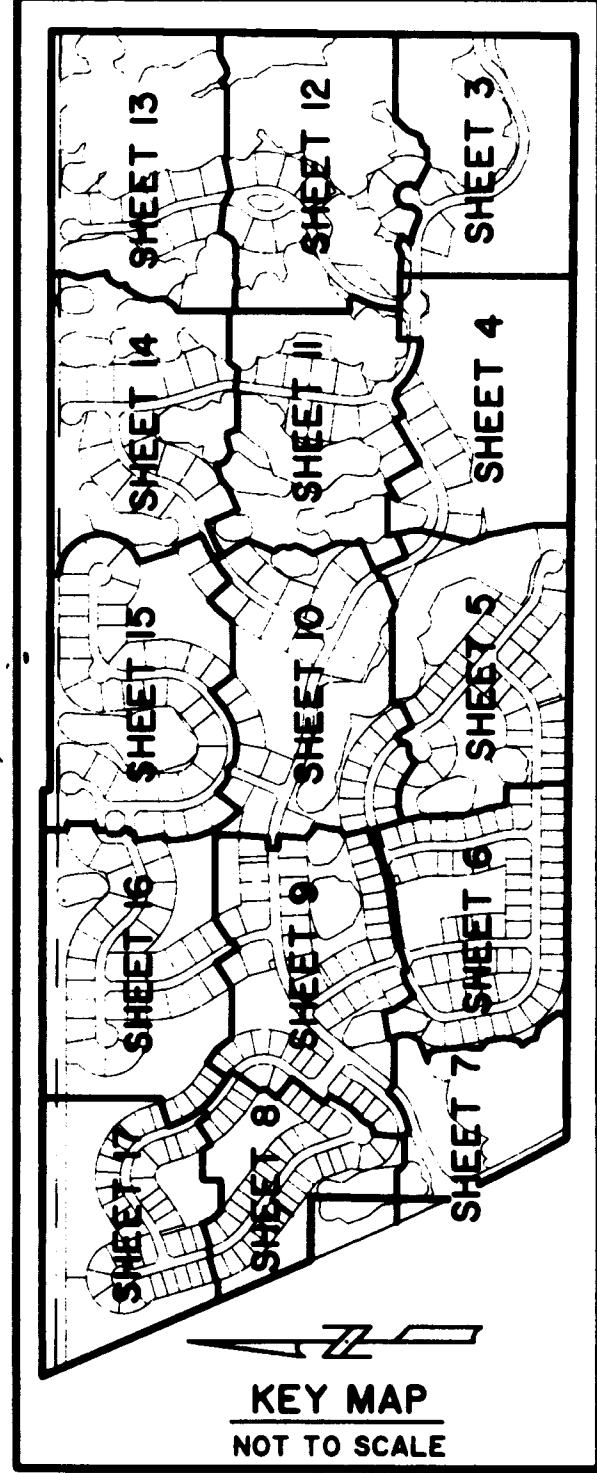
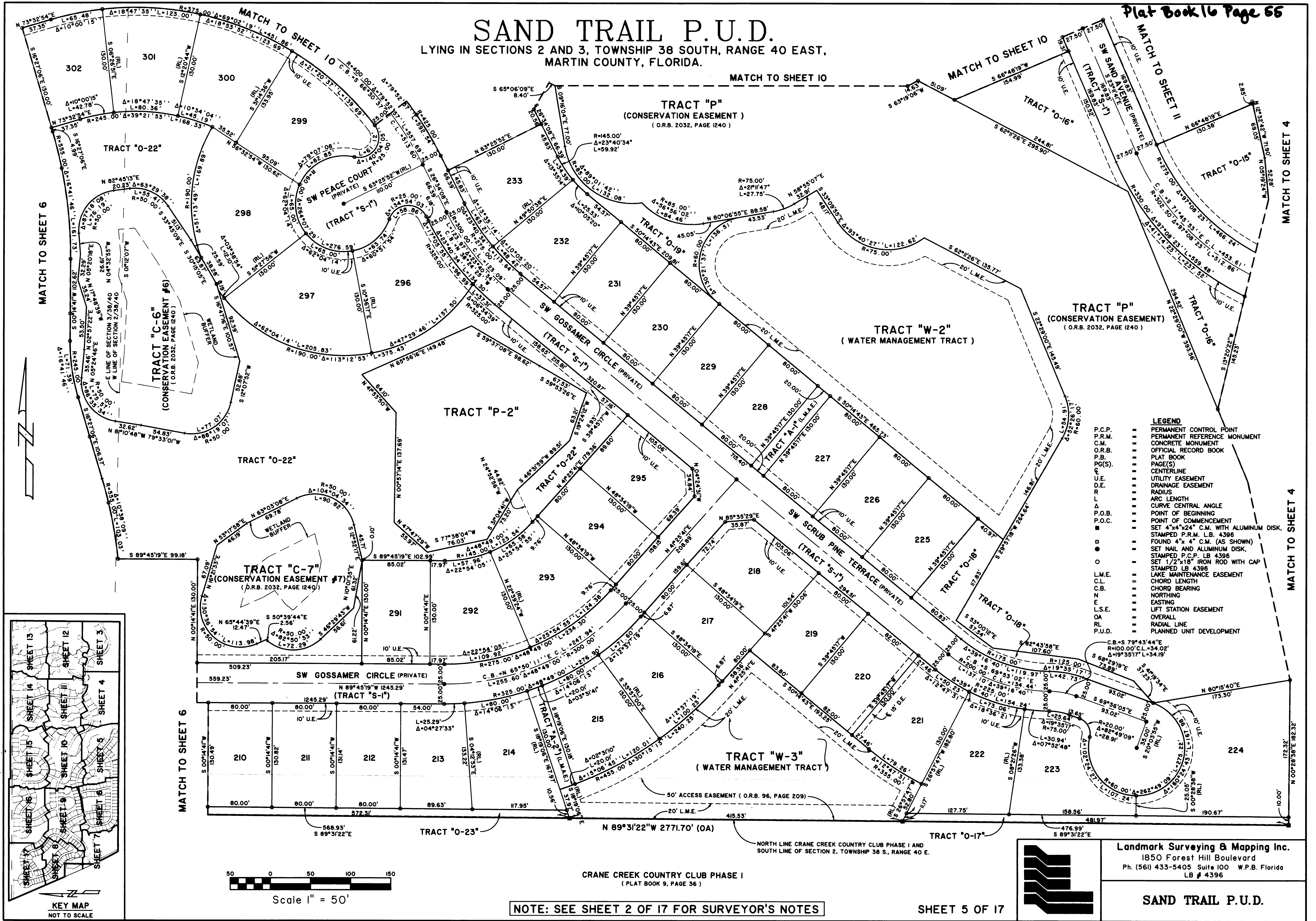


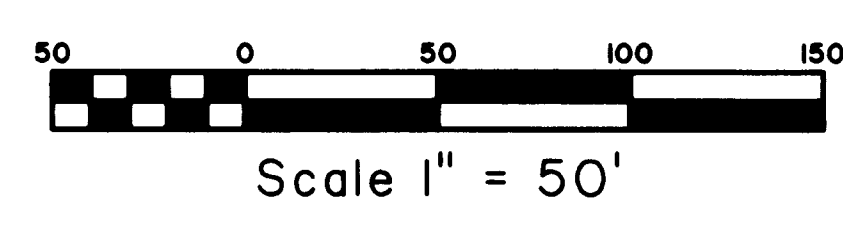
# SAND TRAIL P.U.D.

LYING IN SECTIONS 2 AND 3, TOWNSHIP 38 SOUTH, RANGE 40 EAST,  
MARTIN COUNTY, FLORIDA.



**LEGEND**

P.C.P.	PERMANENT CONTROL POINT
P.R.M.	PERMANENT REFERENCE MONUMENT
C.M.	CONCRETE MONUMENT
O.R.B.	OFFICIAL RECORD BOOK
P.B.	PLAT BOOK
PG(S)	PAGE(S)
C.L.	CENTERLINE
U.E.	UTILITY EASEMENT
D.E.	DRAINAGE EASEMENT
R	RADIUS
L	ARC LENGTH
Δ	CURVE CENTRAL ANGLE
P.O.B.	POINT OF BEGINNING
P.O.C.	POINT OF COMMENCEMENT
■	SET 4"x4"x24" C.M. WITH ALUMINUM DISK, STAMPED P.R.M. LB. 4396
●	FOUND 4"x4" C.M. (AS SHOWN)
○	SET NAIL AND ALUMINUM DISK, STAMPED P.C.P. LB 4396
○	SET 1/2"x18" IRON ROD WITH CAP STAMPED LB 4396
L.M.E.	LAKE MAINTENANCE EASEMENT
C.L.	CHORD LENGTH
C.B.	CHORD BEARING
N	NORTHING
E	EASTING
N.S.E.	LIFT STATION EASEMENT
OA	OVERALL
RL	RADIAL LINE
P.U.D.	PLANNED UNIT DEVELOPMENT

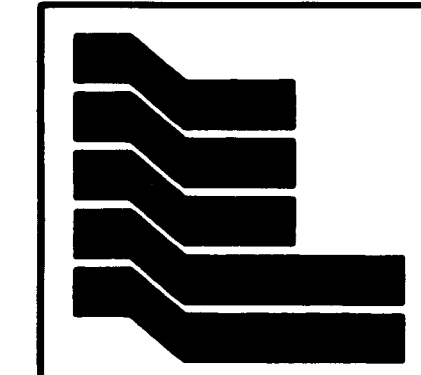


NOTE: SEE SHEET 2 OF 17 FOR SURVEYOR'S NOTES

SHEET 5 OF 17

CRANE CREEK COUNTRY CLUB PHASE I  
(PLAT BOOK 9, PAGE 36)

NORTH LINE CRANE CREEK COUNTRY CLUB PHASE I AND  
SOUTH LINE OF SECTION 2, TOWNSHIP 38 S., RANGE 40 E.



Landmark Surveying & Mapping Inc.  
1850 Forest Hill Boulevard  
Ph. (561) 433-5405 Suite 100 W.P.B. Florida  
LB # 4396

SAND TRAIL P.U.D.

D:\BISPO11\EP\IN\3\085\2632\26325\_5 Fri Feb 16 09:06:44 2007 PLOTTED BY LESLIE C. BISPOIT