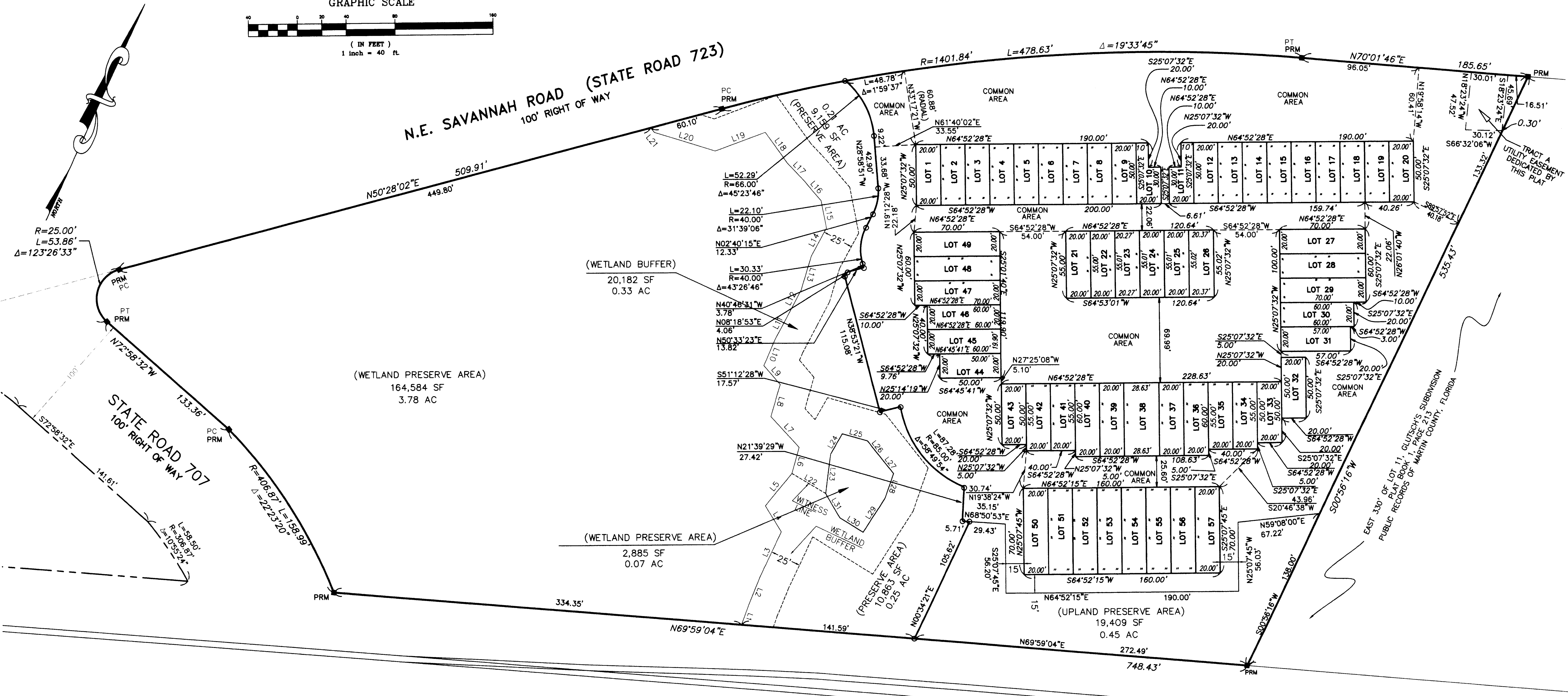
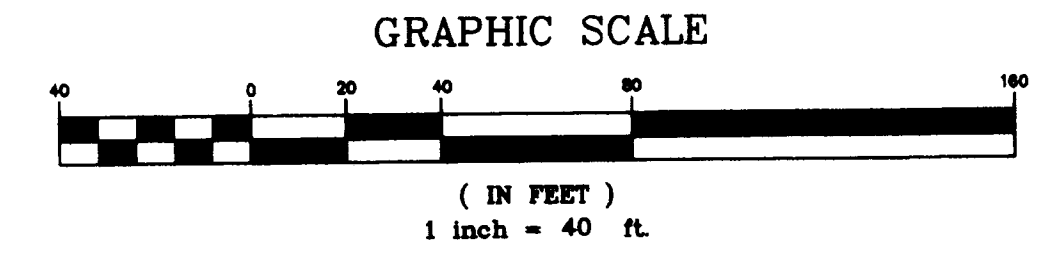


THE INDUSTRIAL PARK AT AVONLEA

A SUBDIVISION LYING IN SECTION 28, TOWNSHIP 37 SOUTH, RANGE 41 EAST, CITY OF STUART, MARTIN COUNTY, FLORIDA.

LEGEND

P.B. PLAT BOOK
 PG. PAGE
 TYP. TYPICAL
 L LENGTH
 R RADIUS
 Δ DELTA
 AC. ACRES
 S.F. SQUARE FEET
 FND FOUND
 R/W RIGHT-OF-WAY
 PRM PERMANENT REFERENCE MONUMENT
 PC POINT OF CURVATURE
 PT POINT OF TANGENCY
 ■ SET PERMANENT REFERENCE MONUMENT #4942
 ○ SET 5/8" IRON ROD & CAP LB #4942



WETLAND LINE TABLE

LINE	LENGTH	BEARING
L1	17.25	N08°04'32"W
L2	25.11	N02°27'17"W
L3	40.18	N02°47'09"E
L4	24.79	N56°13'26"W
L5	34.03	N15°12'06"E
L6	22.18	N09°20'13"W
L7	34.06	N67°06'51"W
L8	27.47	N08°38'50"W
L9	20.42	N65°01'58"W
L10	22.77	N01°36'07"W
L11	26.41	N03°17'03"E
L12	19.91	N02°59'36"E
L13	28.93	N07°54'04"W
L14	26.48	N03°49'24"E

WETLAND LINE TABLE (CONT'D)

LINE	LENGTH	BEARING
L15	22.92	N35°27'59"W
L16	21.72	N65°01'55"W
L17	20.00	N67°58'30"W
L18	30.78	N60°06'54"W
L19	43.70	N44°44'12"E
L20	51.95	N82°30'18"E
L21	4.93	N63°54'28"W
L22	31.98	S84°20'07"E
L23	32.39	N17°23'49"W
L24	19.19	N05°05'55"E
L25	21.41	N81°13'51"E
L26	17.64	S82°59'37"E
L27	16.37	S85°31'47"E
L28	20.86	S05°24'23"E
L29	33.27	S08°14'59"W
L30	22.25	N82°54'27"W
L31	22.73	N55°13'06"W

FLORIDA EAST COAST RAILWAY 100' R/W

THE VELCON GROUP INC.
 ENGINEERS & SURVEYORS
 702 S.W. PORT ST. LUCIE BOULEVARD
 PORT ST. LUCIE, FLORIDA 34953
 (772) 879-0477
 (772) 871-6659-FAX

JOB No. 04-004ENG DRAWN BY: SE
 SCALE: 1"=40' CHECKED BY: BK
 DATE: 02/16/08 CADD FILE: SEE LABEL

SHEET NO.:
2
 OF :
2

F:\projects\04-004\04-004-ENG\DWG\04-004-PLAT.dwg, SHEET 2, 4/19/2007, 1:41:20 PM