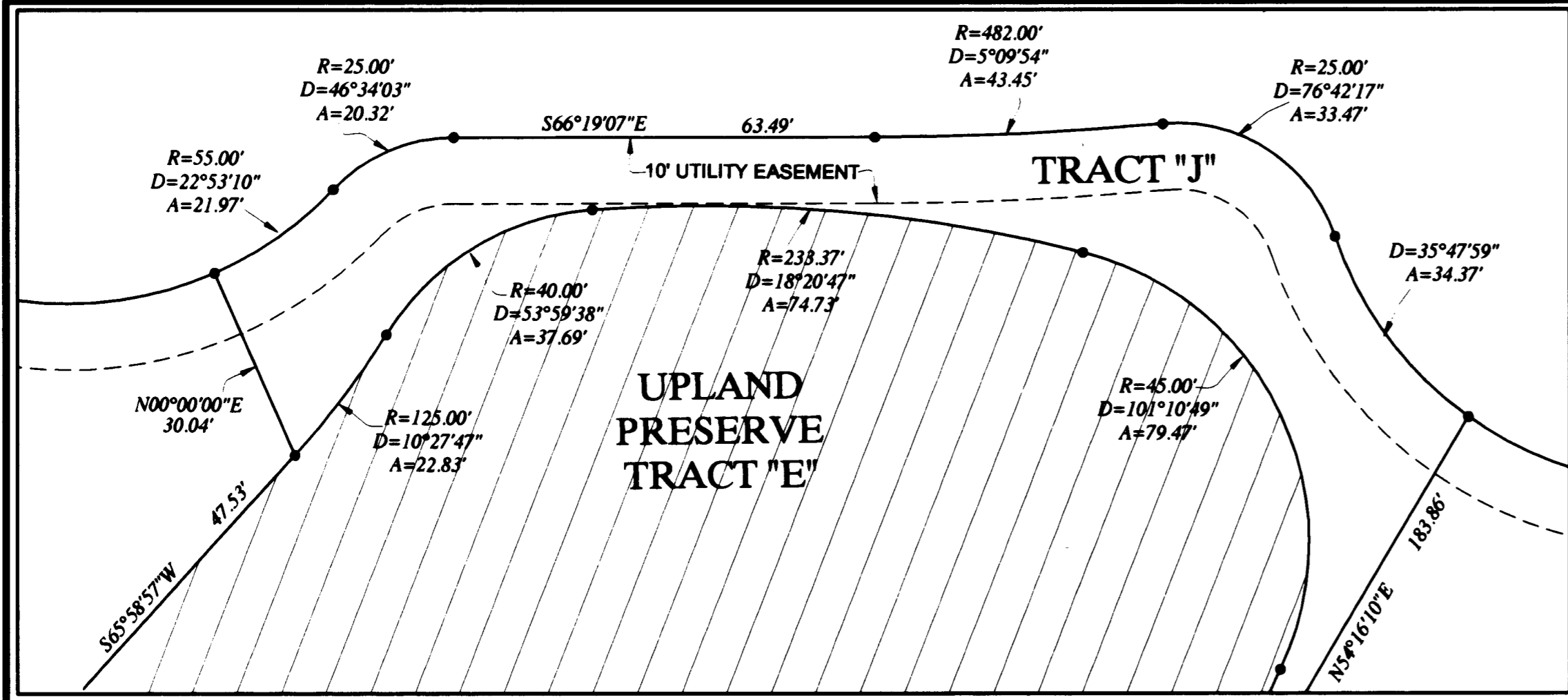


JUPITER EQUESTRIAN ESTATES PUD

LYING IN THE SOUTHEAST QUARTER OF SECTION 21,
TOWNSHIP 40 SOUTH, RANGE 42 EAST, MARTIN COUNTY, FLORIDA

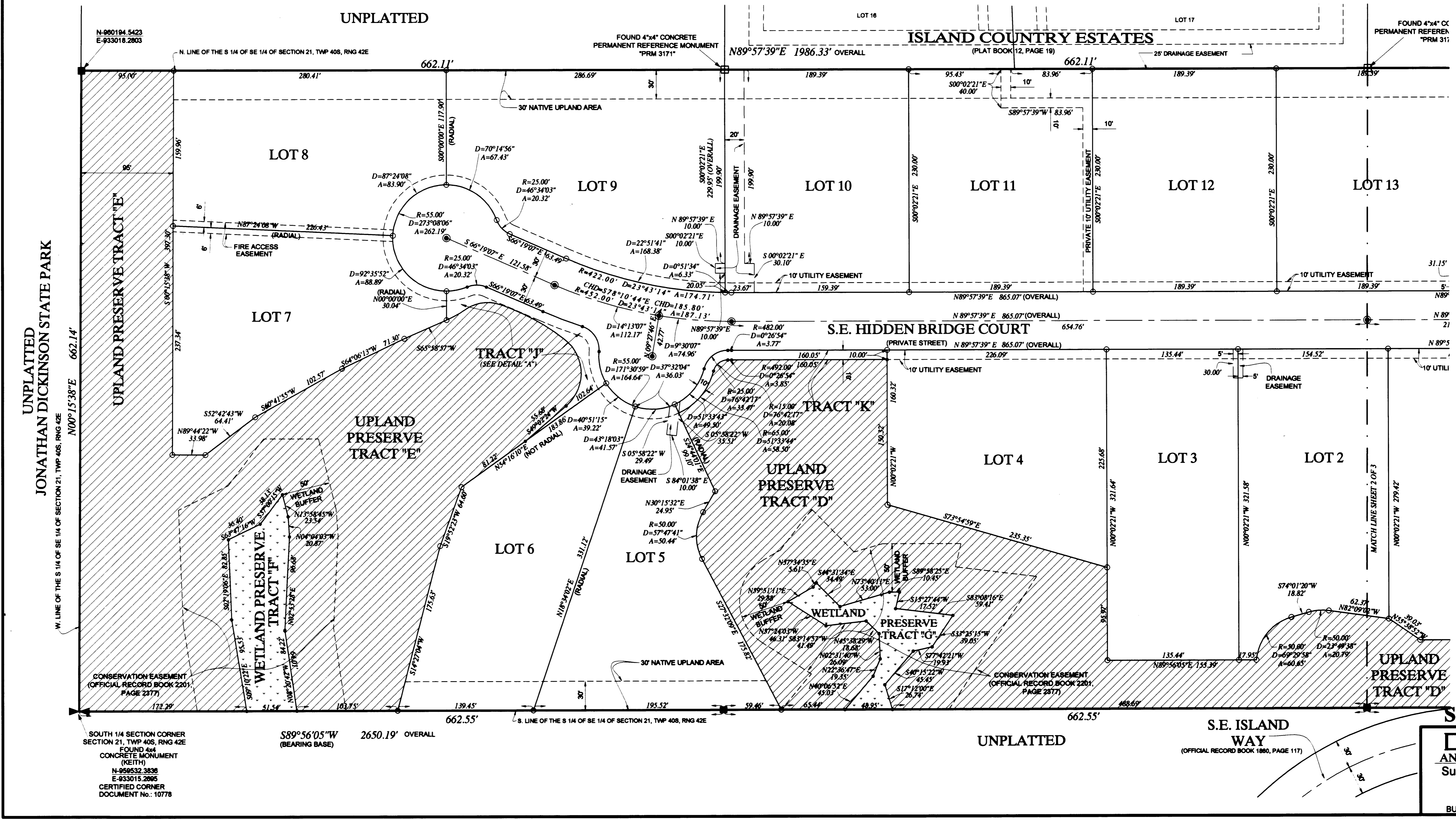
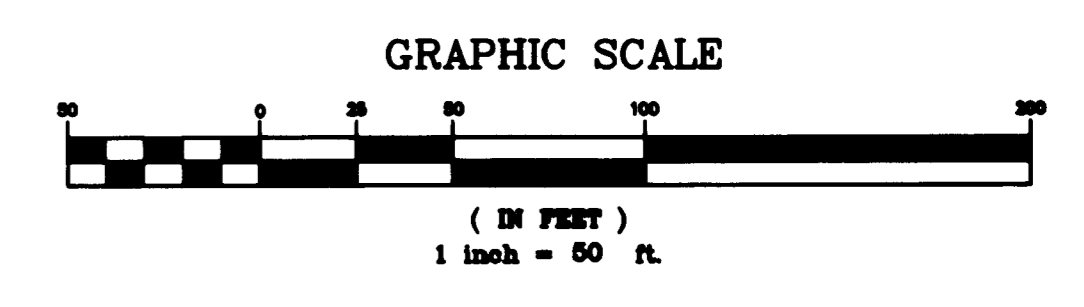
Plat Book 16
Page 52

FEBRUARY 2007



DETAIL "A"
SCALE: 1" = 20'

LEGEND	
□	FOUND 4"x4" CONCRETE PERMANENT REFERENCE MONUMENT (NO IDENTIFICATION)
●	SET (P.C.P.) PERMANENT CONTROL POINT Lআ 2438
○	SET 4"x4" CONCRETE (P.R.M.) PERMANENT REFERENCE MONUMENT Lআ 2438
○	SET 5/8" IRON ROD & CAP Lআ 2438
+	LINE OR CURVE BREAK POINT
R	RADIUS
D	DELTA ANGLE
A	ARC LENGTH
CHB	CHORD BEARING
CHD	CHORD DISTANCE
⊘	CONTROL OF ACCESS-NO VEHICULAR ACCESS WITHOUT APPROVAL OF THE BOARD OF COUNTY COMMISSIONERS
ID	IDENTIFICATION NUMBER
TWP	TOWNSHIP
RNG	RANGE
---	CENTERLINE
P.U.D.	PLANNED UNIT DEVELOPMENT
N.G.V.D.	NATIONAL GEODETIC VERTICAL DATUM
NAD	NORTH AMERICAN DATUM



SHEET 3 OF 3

DAILEY AND ASSOCIATES, INC.
Surveying and Mapping
112 N. U.S. Highway No. 1
Tequesta, FL 33409
Phone: (561) 746-8424
BUSINESS LICENSE: Lআ 2700