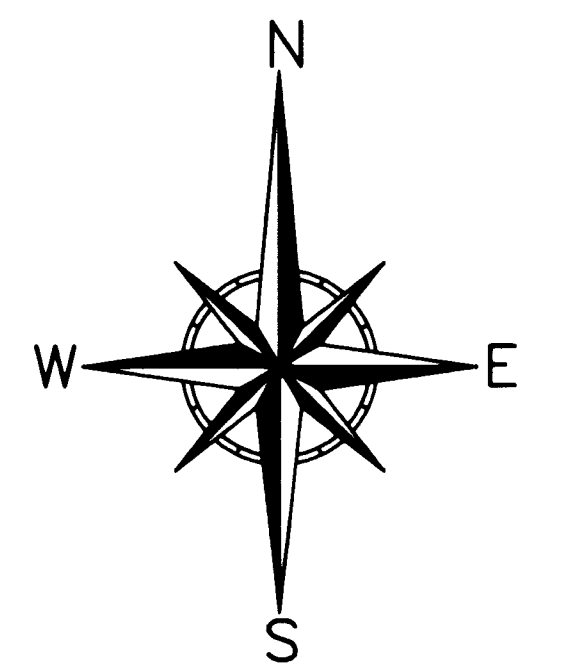
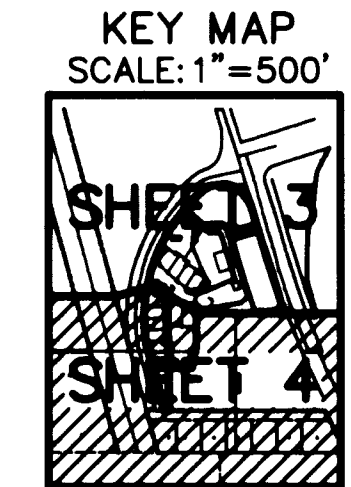
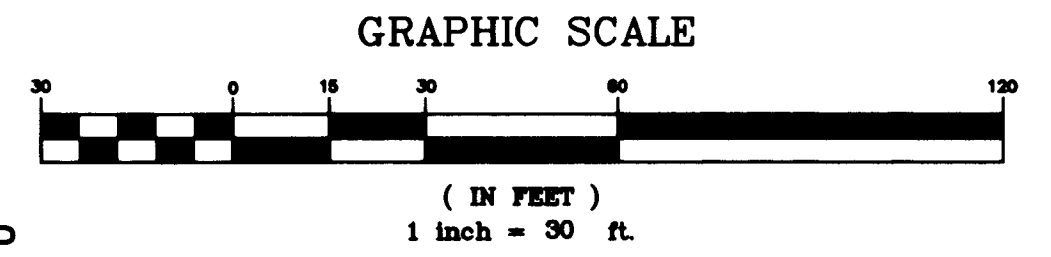


RENAR RIVER PLACE PHASE 1

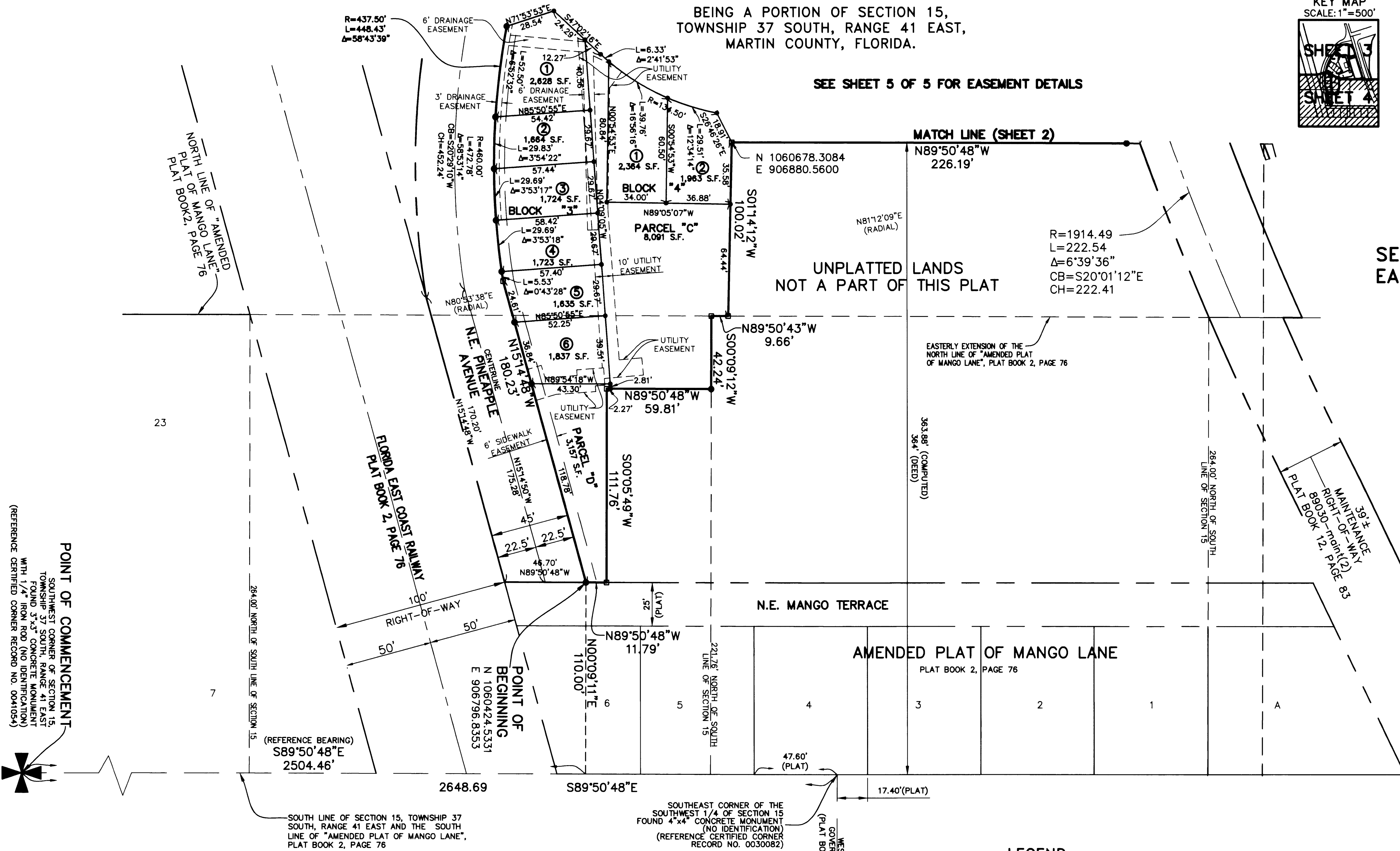
Plat Book 16 Page 51

BEING A PORTION OF SECTION 15,
TOWNSHIP 37 SOUTH, RANGE 41 EAST,
MARTIN COUNTY, FLORIDA.



SEE SHEET 5 OF 5 FOR EASEMENT DETAILS

SEE SHEET 5 OF 5 FOR
EASEMENT DIMENSIONS



POINT OF COMMENCEMENT
SOUTHWEST CORNER OF SECTION 15,
TOWNSHIP 37 SOUTH, RANGE 41 EAST
WITH 1/4 IRON ROD (NO IDENTIFICATION)
(REFERENCE CERTIFIED CORNER RECORD NO. 0041034)

GENERAL NOTES

- A. BEARINGS AS SHOWN HEREON ARE BASED ON STATE PLANE COORDINATES, NAD 83/90, FLORIDA EAST ZONE, AS DERIVED FROM MARTIN COUNTY G.P.S. POINTS, REFERENCE A BEARING OF S89°50'48"E ALONG THE SOUTH LINE OF SECTION 15, TOWNSHIP 37 SOUTH, RANGE 41 EAST.
- B. THIS PLAT, AS RECORDED IN ITS ORIGINAL FORM IN THE PUBLIC RECORDS, IS THE OFFICIAL DEPICTION OF THE SUBDIVIDED LANDS DESCRIBED HEREON AND WILL IN NO CIRCUMSTANCES BE SUPPLEMENTED IN AUTHORITY BY ANY OTHER FORM OF THE PLAT, WHETHER GRAPHIC OR DIGITAL.
- C. NOTICE: THERE MAY BE ADDITIONAL RESTRICTIONS THAT ARE NOT RECORDED ON THIS PLAT THAT MAY BE FOUND IN THE PUBLIC RECORDS OF THIS COUNTY.
- D. THERE SHALL BE NO BUILDING OR ANY OTHER KIND OF CONSTRUCTION OR TREES OR SHRUBS PLACED ON UTILITY EASEMENTS.

LEGEND

- INDICATES NAIL AND DISK "BL LB 6852 PRM" (IN CONCRETE OR PAVEMENT)
- INDICATES 5/8" IRON ROD AND CAP "BL LB 6852"
- ⊙ INDICATES NAIL AND DISK "BL LB 6852" [PERMANENT CONTROL POINT(PCP)]
- ⊕ INDICATES SET 4X4 CONCRETE MONUMENT WITH ALUMINUM DISK STAMPED "BETSY LINDSAY, INC. LB 6852 PRM" [PERMANENT REFERENCE MONUMENT (PRM)]
- CB INDICATES CHORD BEARING
- CH INDICATES CHORD DISTANCE
- C.R. INDICATES COUNTY ROAD
- Δ INDICATES CENTRAL ANGLE
- E INDICATES EAST
- L INDICATES LENGTH OF ARC
- LB INDICATES LICENSED BUSINESS
- N INDICATES NORTH
- NAD INDICATES NORTH AMERICAN DATUM
- NGVD INDICATES NATIONAL GEODETIC VERTICAL DATUM OF 1929
- NO. INDICATES NUMBER
- O.R.B. INDICATES OFFICIAL RECORDS BOOK
- R INDICATES RADIUS
- S INDICATES SOUTH
- S.F. INDICATES SQUARE FEET
- S.R. INDICATES STATE ROAD
- W INDICATES WEST

B BETSY LINDSAY, INC.
SURVEYING AND MAPPING
208 NORTH U.S. HWY NO. 1 - UNIT 8 - TEQUESTA, FLORIDA 33409
(561)575-5275 (561)575-4324 FAX
LICENSED BUSINESS NO. 6852
RENAR RIVER PLACE PHASE 1 SHEET 4 OF 5