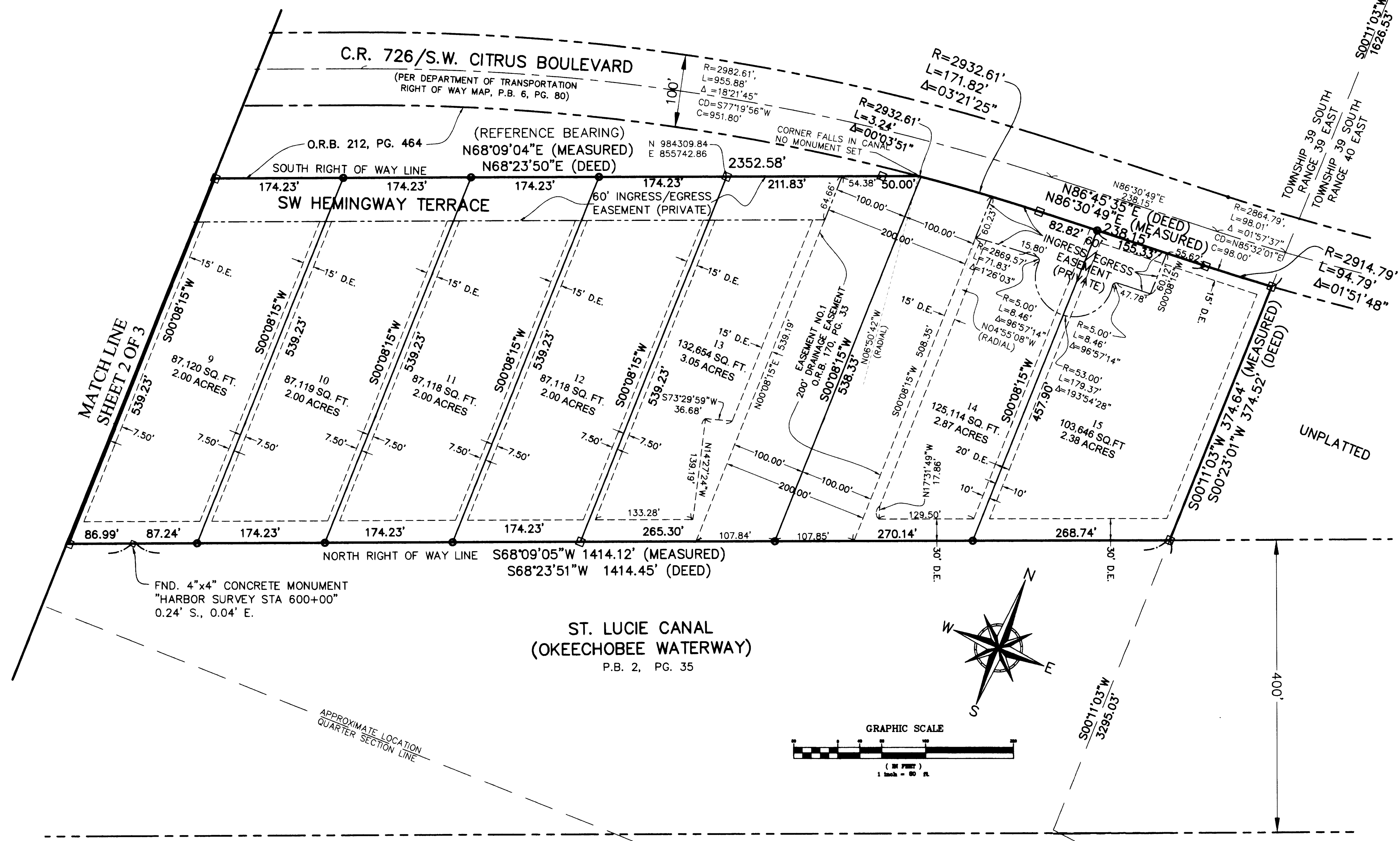
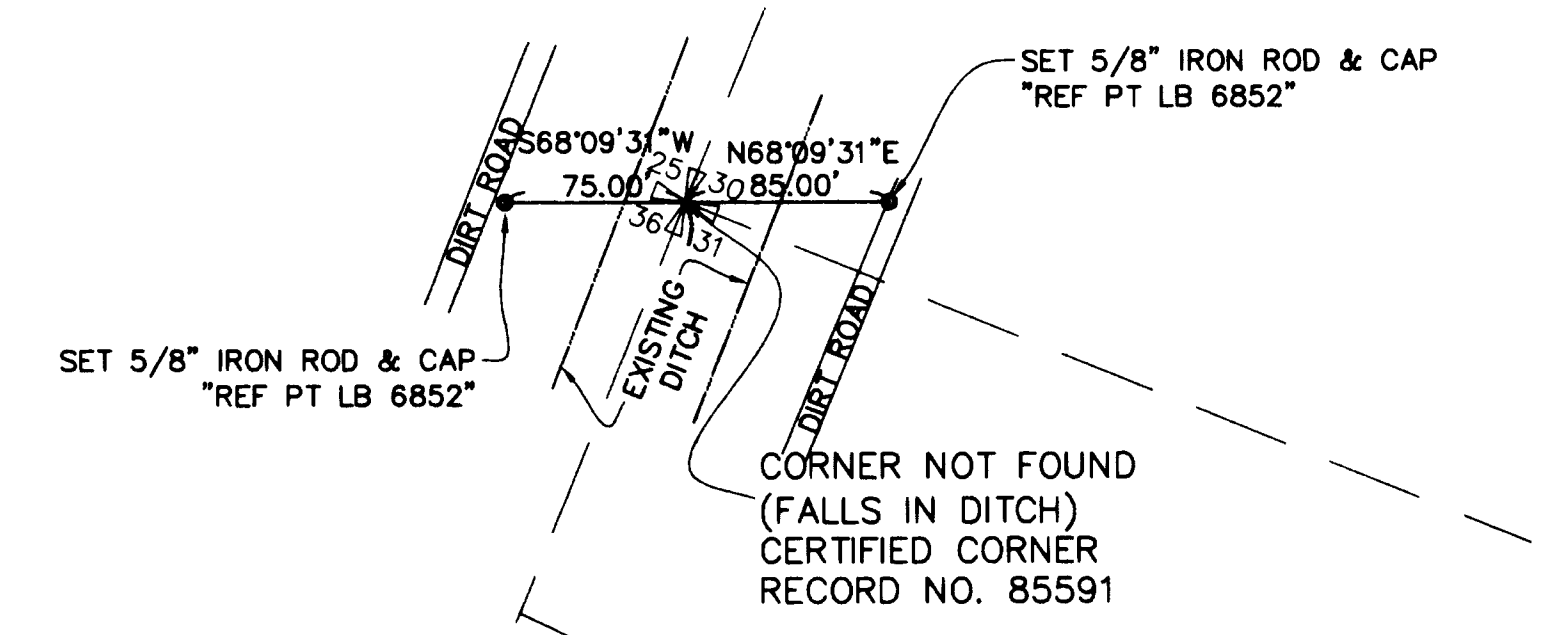


HEMINGWAY ESTATES

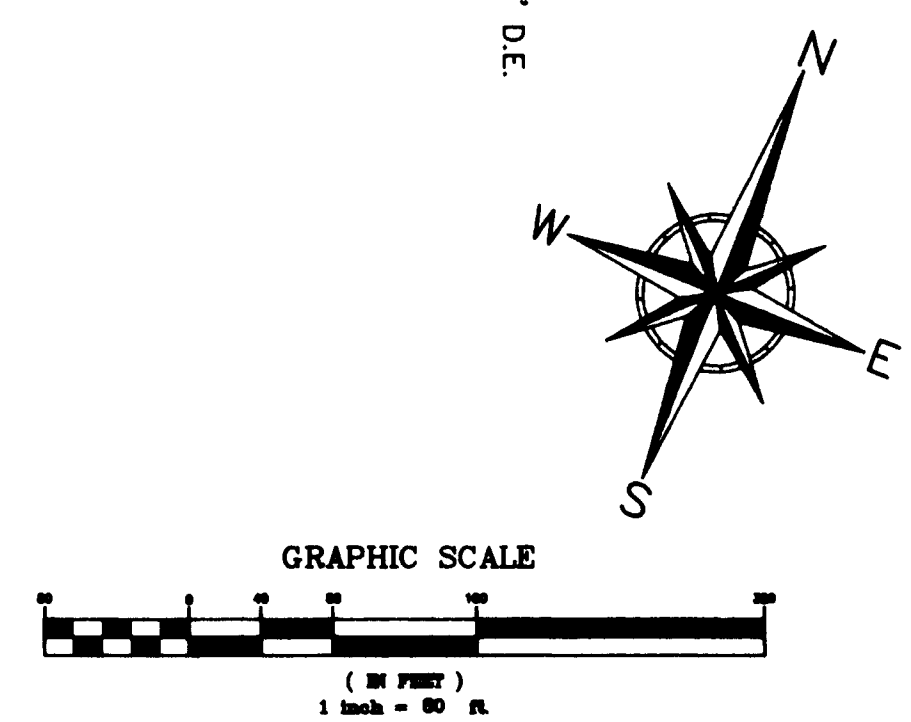
BEING A PORTION OF THE EAST ONE HALF OF SECTION 36, TOWNSHIP 39 SOUTH, RANGE 39 EAST, MARTIN COUNTY, FLORIDA

GENERAL NOTES

- A. BEARINGS AS SHOWN HEREON ARE BASED ON STATE PLANE COORDINATES, REFERENCE THE NORTH AMERICAN DATUM OF 1983/90 (NAD 83/90), FLORIDA EAST ZONE, REFERENCE A BEARING OF N68°09'04"E ALONG THE SOUTH RIGHT OF WAY LINE OF C.R. 726 (S.W. CITRUS BLVD.).
- B. THIS PLAT, AS RECORDED IN ITS ORIGINAL FORM IN THE PUBLIC RECORDS, IS THE OFFICIAL DEPICTION OF THE SUBDIVIDED LANDS DESCRIBED HEREON AND WILL IN NO CIRCUMSTANCES BE SUPPLEMENTED IN AUTHORITY BY ANY OTHER FORM OF THE PLAT, WHETHER GRAPHIC OR DIGITAL.
- C. NOTICE: THERE MAY BE ADDITIONAL RESTRICTIONS THAT ARE NOT RECORDED ON THIS PLAT THAT MAY BE FOUND IN THE PUBLIC RECORDS OF THIS COUNTY.
- D. IN THE EVENT THAT MARTIN COUNTY DISTURBS THE SURFACE OF A PRIVATE STREET DUE TO MAINTENANCE REPAIR OR REPLACEMENT OF A PUBLIC IMPROVEMENT LOCATED THEREIN, THEN THE COUNTY SHALL BE RESPONSIBLE FOR RESTORING THE STREET SURFACE TO THE EXTENT WHICH WOULD BE REQUIRED IF THE STREET WERE A PUBLIC STREET, IN ACCORDANCE WITH COUNTY SPECIFICATIONS.



- ### LEGEND
- INDICATES NO. 5 (5/8") IRON ROD AND CAP "BL LB 6852"
 - INDICATES SET 4"x4" CONCRETE MONUMENT WITH ALUMINUM DISK STAMPED "BETSY LINDSAY, INC. LB 6852 PRM" [PERMANENT REFERENCE MONUMENT (PRM)] UNLESS OTHERWISE NOTED
 - ✦ INDICATES SECTION CORNER
 - A.E. INDICATES ACCESS EASEMENT
 - BL. INDICATES BETSY LINDSAY, INC.
 - C. INDICATES CHORD LENGTH
 - C.R. INDICATES COUNTY ROAD
 - CD. INDICATES CHORD DIRECTION
 - CM. INDICATES CONCRETE MONUMENT
 - CONC. INDICATES CONCRETE
 - Δ. INDICATES DELTA (CENTRAL) ANGLE
 - D.E. INDICATES DRAINAGE EASEMENT
 - FND. INDICATES FOUND
 - L. INDICATES LENGTH OF ARC
 - LB. INDICATES LICENSED BUSINESS
 - NAD. INDICATES NORTH AMERICAN DATUM
 - NGVD. INDICATES NATIONAL GEODETIC VERTICAL DATUM OF 1929
 - O.R.B. INDICATES OFFICIAL RECORDS BOOK
 - P.B. INDICATES PLAT BOOK
 - PCP. INDICATES PERMANENT CONTROL POINT
 - PG. INDICATES PAGE
 - PRM. INDICATES PERMANENT REFERENCE MONUMENT
 - R. INDICATES RADIUS
 - REF. PT. INDICATES REFERENCE POINT
 - S.R. INDICATES STATE ROAD
 - SQ.FT. INDICATES SQUARE FEET



S:\05-a\SDSK\PROJ\04\projects\04RHOTEN\04RHOTEN PLAT.dwg, 9/27/2006 1:47:58 PM, HP Designerlet 500.24_HPG1/2 Card.pc3, BLS

B BETSY LINDSAY, INC.
 SURVEYING AND MAPPING
 7967 S.W. JACK JAMES DRIVE, STUART, FLORIDA 34997
 (772)286-5753 (772)286-5933 FAX
 LICENSED BUSINESS NO. 6852
 HEMINGWAY ESTATES SHEET 3 OF 3