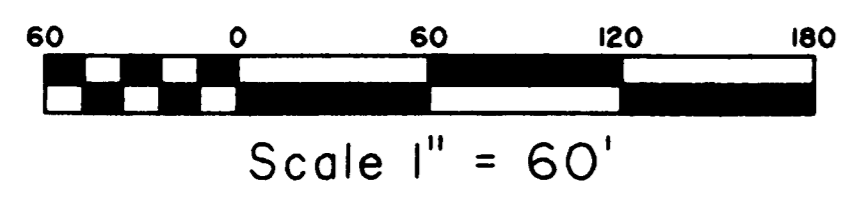


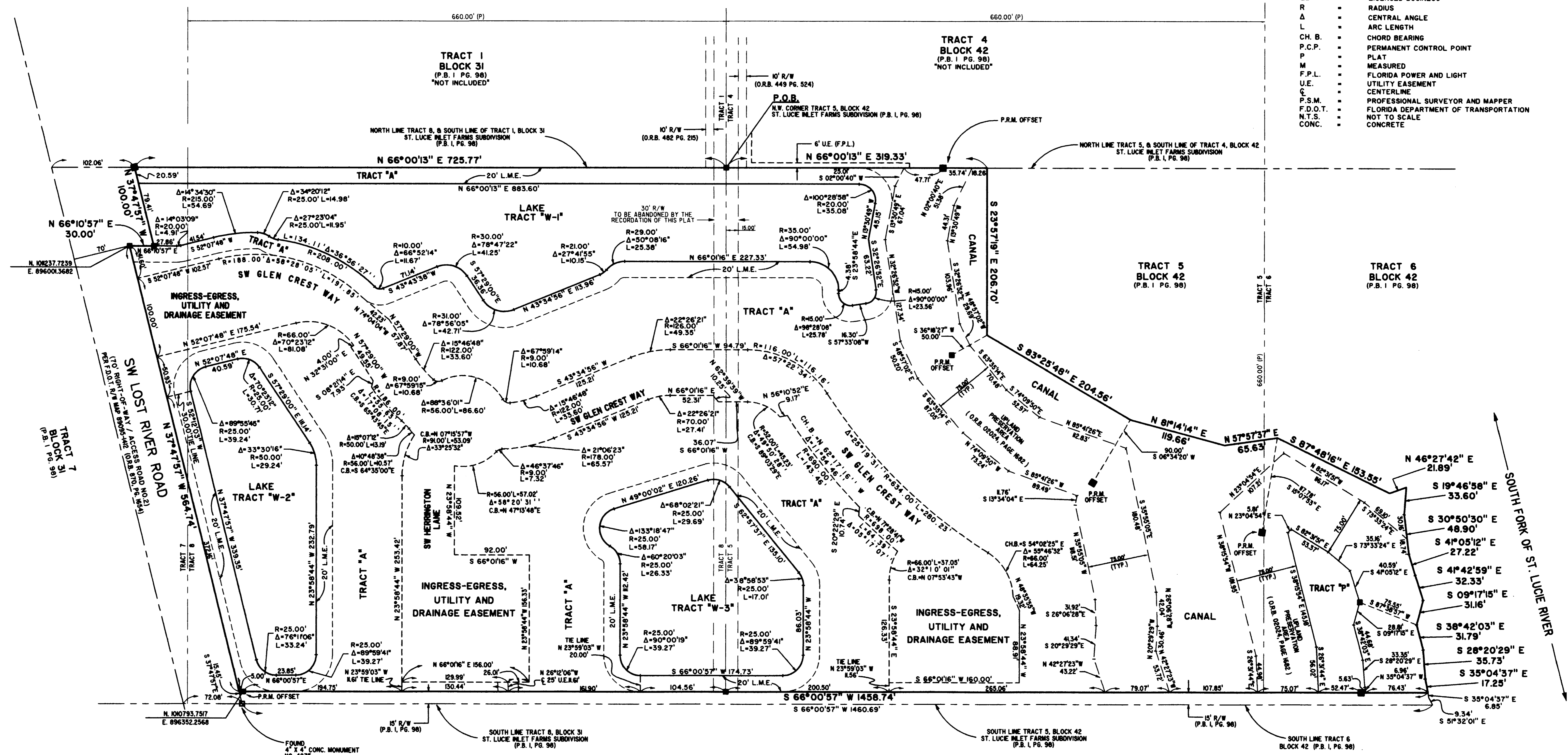
RIVER GLEN

BEING A REPLAT OF A PORTION OF TRACT 7 AND TRACT 8, BLOCK 31 OF THE PLAT OF ST. LUCIE INLET FARMS SUBDIVISION, AS RECORDED IN PLAT BOOK 1, PAGE 98, PUBLIC RECORDS OF PALM BEACH (NOW MARTIN) COUNTY, FLORIDA LYING EAST OF THE EAST RIGHT-OF-WAY OF THE FLORIDA DEPARTMENT OF TRANSPORTATION ACCESS ROAD NO. 2 AS SHOWN ON RIGHT-OF-WAY MAP 89095-1412, AND A PORTION OF TRACT 5 AND TRACT 6, BLOCK 42 OF SAID PLAT OF ST. LUCIE INLET FARMS SUBDIVISION, LYING WEST OF THE SOUTH FORK OF THE ST. LUCIE RIVER



LEGEND

■	DENOTES SET 4"x4" CONCRETE PERMANENT REFERENCE MONUMENT STAMPED (PRM LB 4396)
NO.	TYPICAL NUMBER
ID.	IDENTIFICATION
P.O.B.	POINT OF BEGINNING
P.B.	PLAT BOOK
O.R.B.	OFFICIAL RECORD BOOK
P.R.M.	PERMANENT REFERENCE MONUMENT
R/W	RIGHT-OF-WAY
P.G.	PAGE
L.M.E.	LAKE MAINTENANCE EASEMENT
LB	LICENSED BUSINESS
R	RADIUS
Δ	CENTRAL ANGLE
L	ARC LENGTH
CH. B.	CHORD BEARING
P.C.P.	PERMANENT CONTROL POINT
P	PLAT
M	MEASURED
F.P.L.	FLORIDA POWER AND LIGHT
U.E.	UTILITY EASEMENT
C	CENTERLINE
F.S.M.	PROFESSIONAL SURVEYOR AND MAPPER
F.D.O.T.	FLORIDA DEPARTMENT OF TRANSPORTATION
N.T.S.	NOT TO SCALE
CONC.	CONCRETE



GOVERNMENT LOT 6
"NOT INCLUDED"

GENERAL NOTES

- BEARINGS AS SHOWN HEREON ARE BASED UPON THE NORTH LINE OF TRACT 5, BLOCK 42, ST. LUCIE INLET FARMS SUBDIVISION (P.B. 1, PG. 98), HAVING AN ASSUMED BEARING OF NORTH 66°00'13" EAST AND ALL OTHER BEARINGS ARE RELATIVE THERETO.
- THIS PLAT, AS RECORDED IN ITS ORIGINAL FORM IN THE PUBLIC RECORDS, IS THE OFFICIAL DEPICTION OF THE SUBDIVIDED LANDS DESCRIBED HEREON AND WILL IN NO CIRCUMSTANCES BE SUPPLANTED IN AUTHORITY BY ANY OTHER FORM OF THE PLAT, WHETHER GRAPHIC OR DIGITAL.
- NOTICE: THERE MAY BE ADDITIONAL RESTRICTIONS THAT ARE NOT RECORDED ON THIS PLAT THAT MAY BE FOUND IN THE PUBLIC RECORDS OF THIS COUNTY.
- IN THE EVENT THAT MARTIN COUNTY OR ANY PERSON(S) DISTURBS THE SURFACE OF A PRIVATE STREET DUE TO MAINTENANCE REPAIR OR REPLACEMENT OF A PUBLIC IMPROVEMENT LOCATED THEREIN, THEN THE COUNTY SHALL BE RESPONSIBLE FOR RESTORING THE STREET SURFACE ONLY TO THE EXTENT WHICH WOULD BE REQUIRED IF THE STREET WERE A PUBLIC STREET, IN ACCORDANCE WITH COUNTY SPECIFICATIONS.
- THERE SHALL BE NO BUILDING OR ANY OTHER KIND OF CONSTRUCTION OR TREES OR SHRUBS PLACED ON DRAINAGE EASEMENTS.
- THE STATE PLANE COORDINATES AS SHOWN ON SHEET 2 WERE ESTABLISHED BY USING NATIONAL GEODETIC SURVEY MONUMENT FOIS AND MARTIN COUNTY MONUMENT GS 23 WHICH ARE BASED UPON THE NORTH AMERICAN DATUM 1983/ADJUSTMENT OF 1990 (NAD 83/90) FLORIDA EAST ZONE.

Landmark Surveying & Mapping Inc.
1850 Forest Hill Boulevard
Ph. (561) 433-5405 Suite 100 W.P.B. Florida, 33406
LB # 4396

RIVER GLEN

C:\EP\1113\08512616\2616PL Tue Jul 25 09:44:20 2006 J STEWART