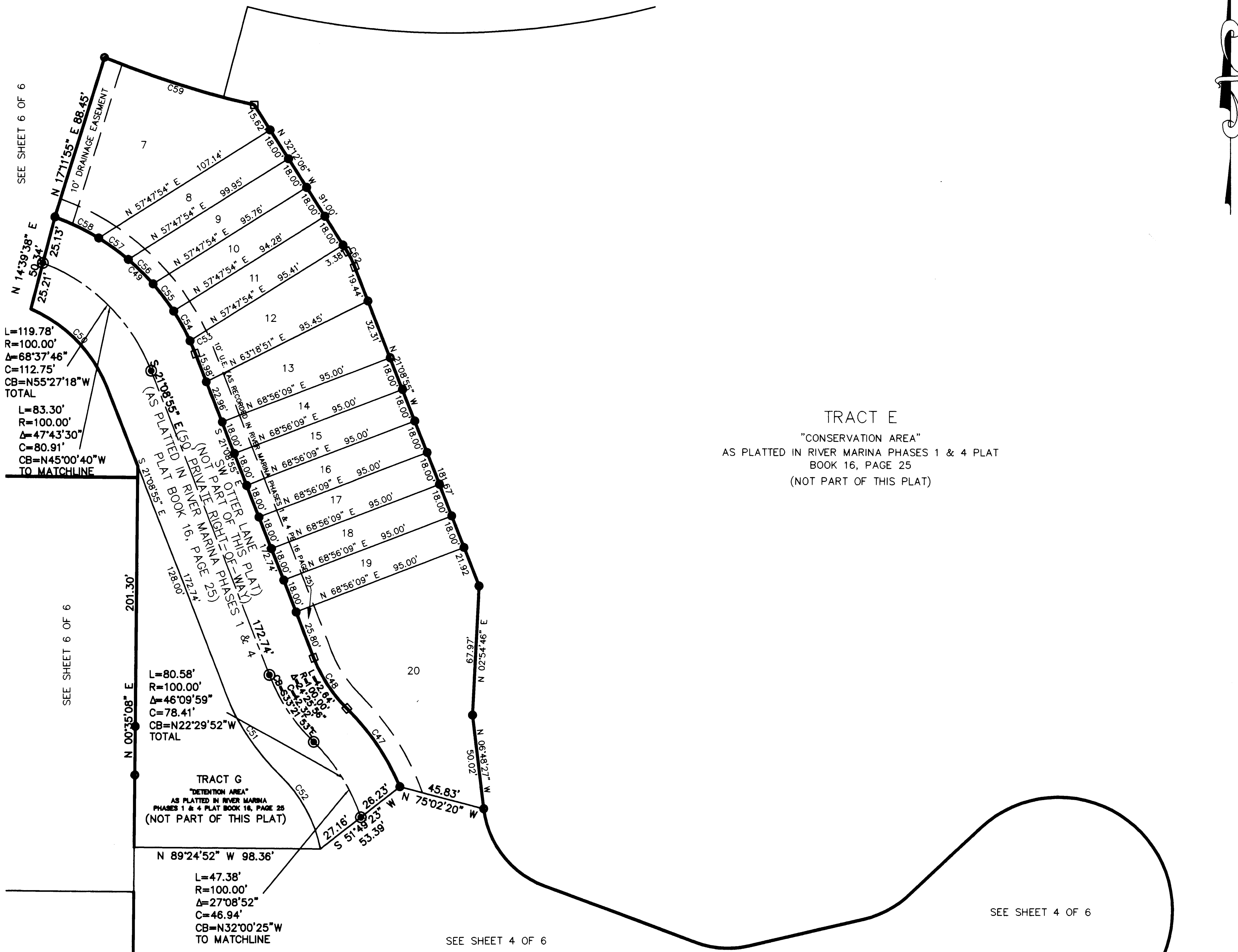
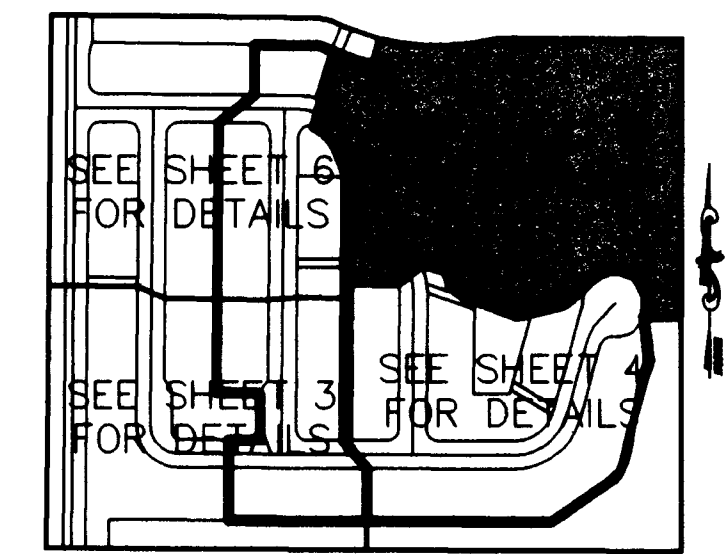


# RIVER MARINA PUD, PHASES 3 & 5

REPLAT OF A PORTION OF TRACTS 1, 2 & 4 AND ALL OF TRACT 3, RIVER MARINA PUD, PHASES 1 & 4, RECORDED IN PLAT BOOK 16, PAGE 25  
 MARTIN COUNTY, FLORIDA SECTION 12, TOWNSHIP 39 SOUTH, RANGE 40 EAST, MARTIN COUNTY, FLORIDA

Plat Book 16 Page 42



TRACT E  
 "CONSERVATION AREA"  
 AS PLATTED IN RIVER MARINA PHASES 1 & 4 PLAT  
 BOOK 16, PAGE 25  
 (NOT PART OF THIS PLAT)

L=119.78'  
 R=100.00'  
 Δ=68°37'46"  
 C=112.75'  
 CB=N55°27'18"W  
 TOTAL

L=83.30'  
 R=100.00'  
 Δ=47°43'30"  
 C=80.91'  
 CB=N45°00'40"W  
 TO MATCHLINE

L=80.58'  
 R=100.00'  
 Δ=46°09'59"  
 C=78.41'  
 CB=N22°29'52"W  
 TOTAL

TRACT G  
 "DETENTION AREA"  
 AS PLATTED IN RIVER MARINA  
 PHASES 1 & 4 PLAT BOOK 16, PAGE 25  
 (NOT PART OF THIS PLAT)

L=47.38'  
 R=100.00'  
 Δ=27°08'52"  
 C=46.94'  
 CB=N32°00'25"W  
 TO MATCHLINE

SURVEYOR'S NOTES:

1. THE BEARING STRUCTURE OF THIS PLAT IS BASED ON THE SOUTH LINE OF SECTION 12, TOWNSHIP 39 SOUTH, RANGE 40 EAST, AS BEING N 89°46'41" W.
2. ALL PLATTED UTILITY EASEMENTS DEDICATED HEREON SHALL ALSO BE FOR THE INSTALLATION, CONSTRUCTION, MAINTENANCE AND OPERATION OF CABLE TELEVISION SERVICES, PROVIDED HOWEVER, NO SUCH INSTALLATION, CONSTRUCTION, MAINTENANCE AND OPERATION OF CABLE TELEVISION SERVICES SHALL INTERFERE WITH THE FACILITIES AND SERVICES OF AN ELECTRIC, GAS, TELEPHONE OR OTHER PUBLIC UTILITY. IN THE EVENT THAT A CABLE TELEVISION COMPANY DAMAGES THE FACILITIES OF A PUBLIC UTILITY, IT SHALL BE SOLELY RESPONSIBLE FOR DAMAGES.
3. IN THE EVENT THAT MARTIN COUNTY DISTURBS THE SURFACE OF A PRIVATE STREET DUE TO MAINTENANCE, REPAIR OR REPLACEMENT OF A PUBLIC IMPROVEMENT LOCATED THEREIN, THEN THE COUNTY SHALL BE RESPONSIBLE FOR RESTORING THE STREET SURFACE ONLY TO THE EXTENT WHICH WOULD BE REQUIRED IF THE STREET WERE A PUBLIC STREET, IN ACCORDANCE WITH COUNTY SPECIFICATIONS.
4. IT SHALL BE UNLAWFUL TO ALTER THE APPROVED SLOPES, CONTOURS, OR CROSS SECTIONS OR TO CHEMICALLY, MECHANICALLY, OR MANUALLY REMOVE, DAMAGE, OR DESTROY ANY PLANTS IN THE LITTORAL OR UPLAND TRANSITION ZONE BUFFER AREAS OF CONSTRUCTED LAKES EXCEPT UPON THE WRITTEN APPROVAL OF THE GROWTH MANAGEMENT DIRECTOR, AS APPLICABLE. IT IS THE RESPONSIBILITY OF THE OWNER OR HOME OWNERS ASSOCIATION, ITS SUCCESSORS OR ASSIGNS TO MAINTAIN THE REQUIRED SURVIVORSHIP AND COVERAGE OF THE RECLAIMED UPLAND AND PLANTED LITTORAL AND UPLAND TRANSITION AREAS AND TO ENSURE ON-GOING REMOVAL OF PROHIBITED AND INVASIVE NON-NATIVE PLANT SPECIES FROM THESE AREAS.
5. THERE SHALL BE A 10 FOOT WIDE UTILITY EASEMENT ADJACENT AND PARALLEL TO ALL ROAD RIGHTS-OF-WAY WITHIN THIS PLAT.

KEY MAP

LEGEND

- Δ = DELTA
- R = RADIUS
- A = ARC
- C = CHORD
- CB = CHORD BEARING
- PCP = PERMANENT CONTROL POINT
- PC = POINT OF CURVATURE
- PT = POINT OF TANGENCY
- R/W = RIGHT OF WAY
- FIR = FOUND IRON ROD "NO IDENTIFICATION"
- FIRC = FOUND IRON ROD WITH CAP
- FIP = FOUND IRON PIPE "NO IDENTIFICATION"
- FIPC = FOUND IRON PIPE WITH CAP
- SIRC = SET IRON ROD WITH CAP "LB 7268"
- CONC = CONCRETE
- PUD = PLANNED UNIT DEVELOPMENT
- PB = PLAT BOOK
- FN&D = FOUND NAIL AND DISK
- SN&D = SET NAIL AND DISK
- ST = SAINT
- A.K.A = ALSO KNOWN AS
- PI = POINT OF INTERSECTION
- (P) = PLAT
- (M) = MEASURED
- N = NORTH
- S = SOUTH
- E = EAST
- W = WEST
- P.R.M. = PERMANENT REFERENCE MONUMENT
- L = LENGTH
- U.E. = UTILITY EASEMENT
- OR = OFFICIAL RECORDS
- BK = BOOK
- PG = PAGE

● INDICATES PERMANENT CONTROL POINTS (FOUND NAIL & BRASS DISK STAMPED "PCP LB 7268")

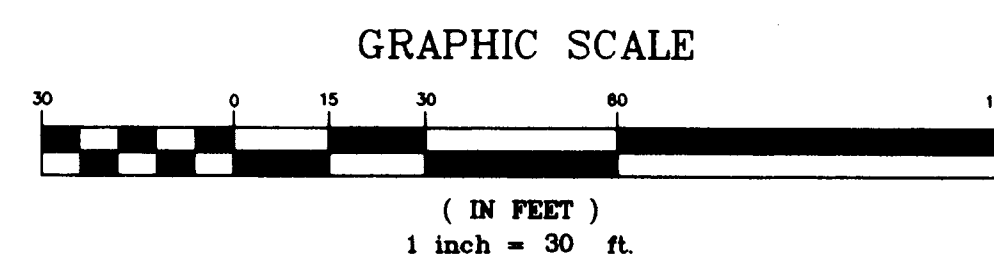
○ INDICATES 1/2"x18" IRON ROD (SET IRON ROD WITH CAP STAMPED LB 7268)

D.E. INDICATES DRAINAGE EASEMENT

L.M.E. INDICATES LAKE MAINTENANCE EASEMENT

LINE TABLE		
LINE	BEARING	LENGTH
		9.45
		9.00
		14.35
		7.70

CURVE TABLE					
CURVE	LENGTH	RADIUS	DELTA	CHORD	DIRECTION
C47	50.36'	125.00'	23°04'59"	50.02'	N 34°02'21" W
C48	31.98'	75.00'	24°25'56"	31.74'	S 33°21'53" E
C49	106.95'	125.00'	49°01'20"	103.72'	N 45°39'35" W
C53	7.29'	125.00'	3°20'22"	7.28'	N 22°49'07" W
C54	18.05'	125.00'	8°16'26"	18.04'	N 28°37'31" W
C55	18.08'	125.00'	8°17'08"	18.06'	N 36°54'18" W
C56	18.50'	125.00'	8°28'42"	18.48'	N 45°17'13" W
C57	19.40'	125.00'	8°53'36"	19.38'	N 53°58'22" W
C58	25.64'	125.00'	11°45'05"	25.59'	N 64°17'42" W
C59	83.28'	475.00'	10°02'44"	83.17'	S 72°18'17" E
C62	9.65'	50.00'	11°03'10"	9.63'	N 26°40'30" W



**Geodetic Survey Services, Inc.**  
 1501 Robert J. Conlan Blvd Suite 130  
 Palm Bay, FL 32905  
 321-724-6659