

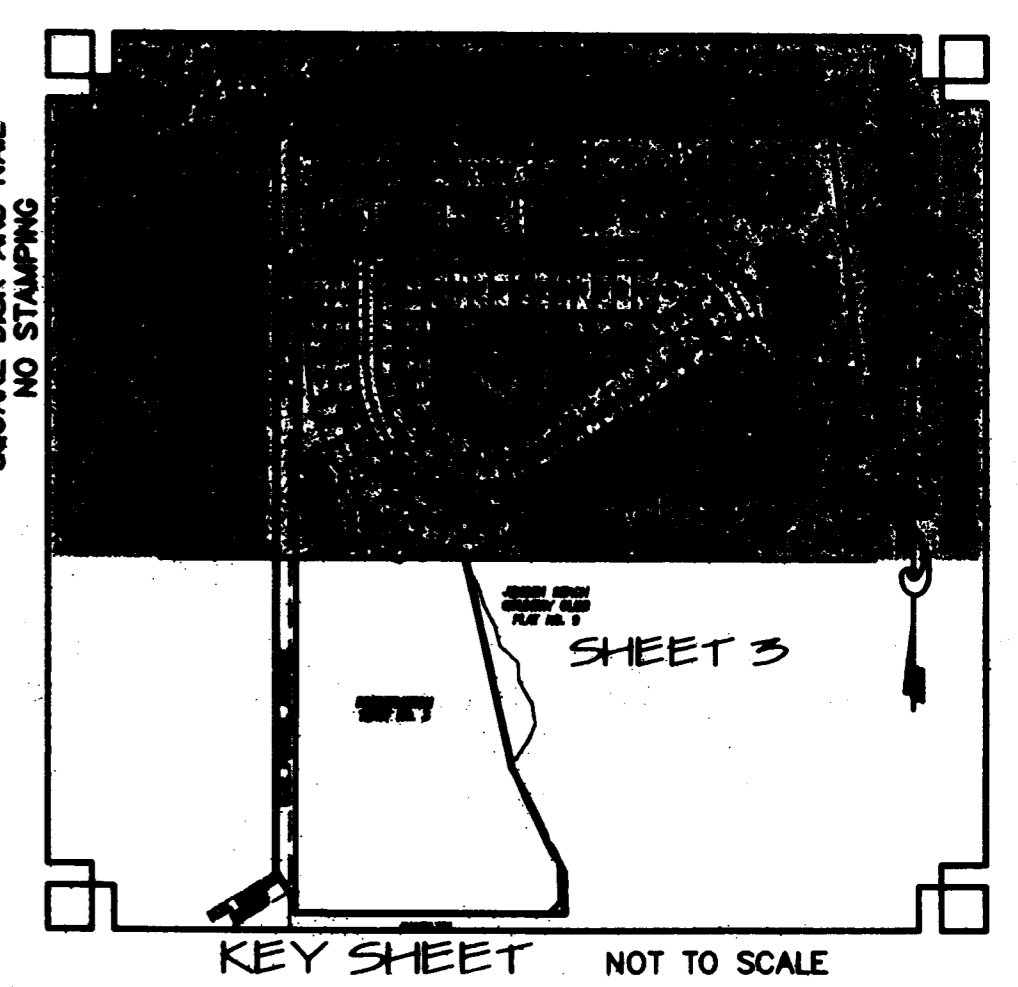
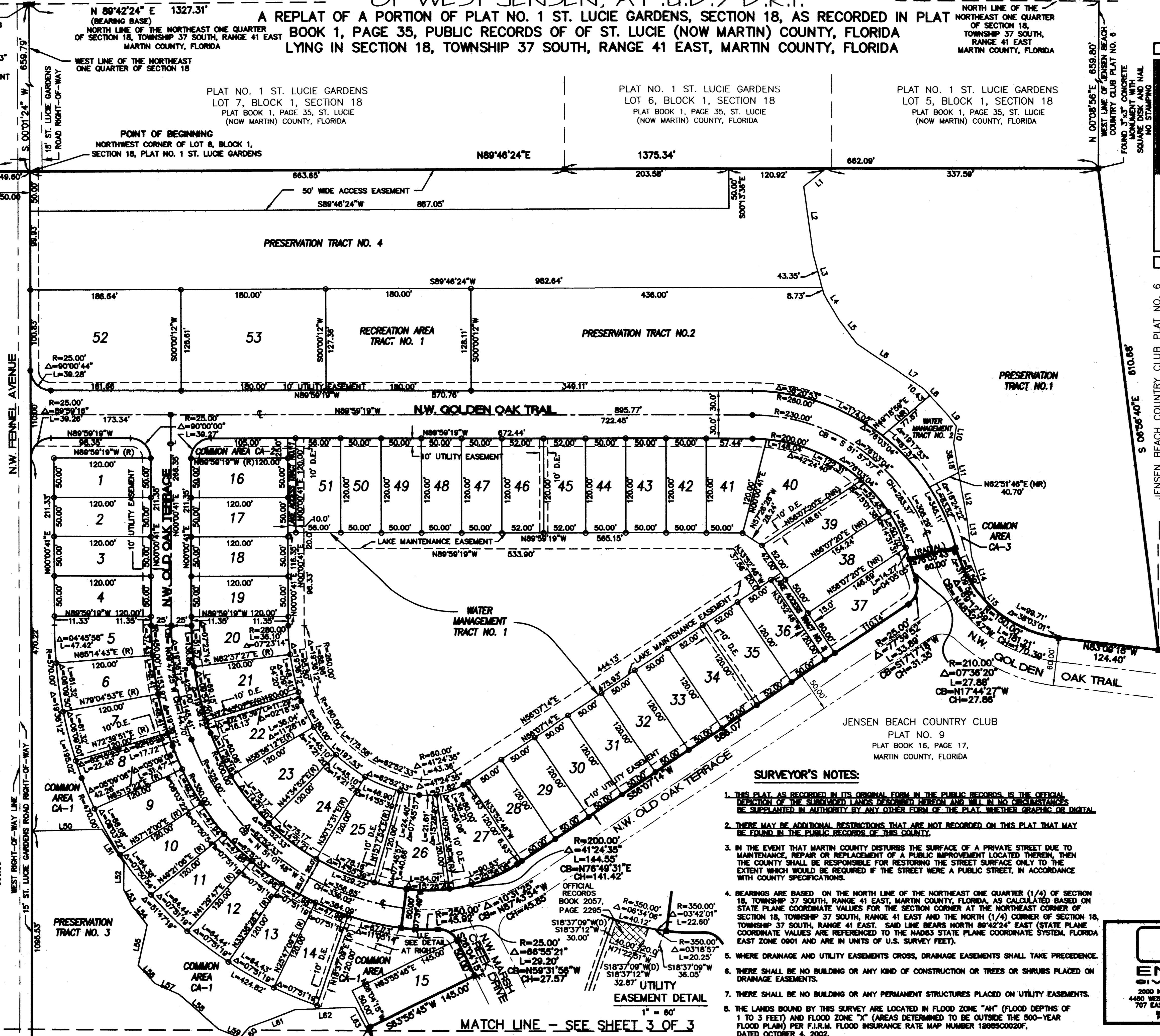
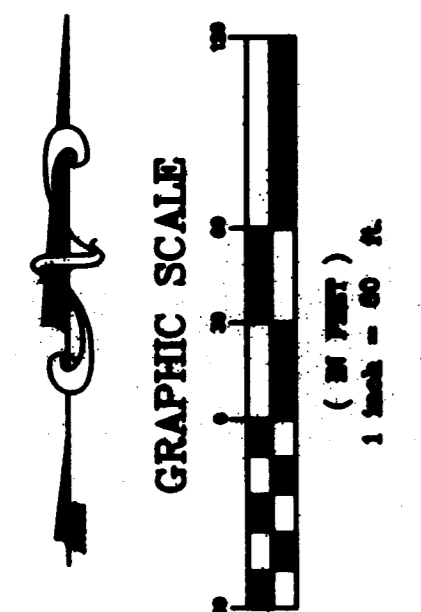
# JENSEN BEACH COUNTRY CLUB PLAT NO. 10 OF WEST JENSEN, A.P.U.D./D.R.I.

A REPLAT OF A PORTION OF PLAT NO. 1 ST. LUCIE GARDENS, SECTION 18, AS RECORDED IN PLAT BOOK 1, PAGE 35, PUBLIC RECORDS OF ST. LUCIE (NOW MARTIN) COUNTY, FLORIDA LYING IN SECTION 18, TOWNSHIP 37 SOUTH, RANGE 41 EAST, MARTIN COUNTY, FLORIDA

NORTH LINE OF THE NORTHEAST ONE QUARTER OF SECTION 18, TOWNSHIP 37 SOUTH, RANGE 41 EAST, MARTIN COUNTY, FLORIDA

POINT OF COMMENCEMENT NORTH 1/4 CORNER SECTION 18 TOWNSHIP 37 SOUTH RANGE 41 EAST MARTIN COUNTY, FLORIDA CERTIFIED CORNER RECORD "JOS" DOCUMENT #0048514 FOUND 4"x4" CONCRETE MONUMENT WITH NO IDENTIFICATION

NORTHING = 1085697.2140 EASTING = 891078.2524 (NAD83, FLORIDA EAST ZONE)



LINE	BEARING	LENGTH
L1	S50°43'00"W	36.10
L2	S07°44'47"E	86.04
L3	S14°48'44"E	82.08
L4	S29°50'20"E	38.20
L5	S38°20'54"E	36.60
L6	S58°24'31"E	57.27
L7	S58°09'58"E	43.56
L8	S42°38'07"E	42.31
L9	S35°58'40"E	19.24
L10	S10°07'00"W	20.60
L11	S08°20'19"E	57.78
L12	S10°14'23"E	39.88
L13	S08°58'49"E	48.23
L14	S17°38'38"E	58.07
L15	S36°38'56"E	4.18
L16	S07°58'31"W	86.90
L17	S32°35'34"E	51.10
L18	S00°48'54"W	33.81
L19	S25°56'11"E	22.94
L20	S38°18'31"E	30.98
L21	S11°43'33"W	53.31
L22	S43°18'28"E	30.57
L23	S88°42'06"E	32.66
L24	S48°38'17"E	65.04
L25	S88°38'36"E	29.04
L26	S40°28'23"W	17.01
L27	S89°13'40"W	61.16
L28	S87°42'15"W	75.12
L29	S28°21'06"E	44.98
L30	S30°00'17"W	5.23
L31	S30°42'21"E	38.50
L32	S20°45'01"E	44.80
L33	S24°28'48"E	157.13
L34	S40°58'42"E	29.85
L35	S01°11'47"E	98.98
L36	S43°42'28"E	41.56

- LEGEND**
- P.R.M. PERMANENT REFERENCE MONUMENT
  - P.C.P. PERMANENT CONTROL POINT
  - LB LICENSED BUSINESS
  - C CENTER LINE
  - R RADIUS
  - Δ CENTRAL ANGLE
  - L ARC LENGTH
  - CB CHORD BEARING
  - CH CHORD DISTANCE
  - (R) RADIAL
  - (NR) NON-RADIAL
  - U.E. UTILITY EASEMENT
  - D.E. DRAINAGE EASEMENT
  - SET PERMANENT REFERENCE MONUMENT 4"x4" CONCRETE MONUMENT WITH DISK STAMPED "PRM-LB #705" WITH DISK STAMPED "PCP-LB #705"
  - FOUND CONCRETE MONUMENT - SIZE AND IDENTIFICATION AS NOTED
  - PERMANENT CONTROL POINT PK NAIL AND DISK STAMPED "PCP LB #705"
  - 5/8" IRON ROD WITH CAP STAMPED "LB705"
  - ⊗ UTILITY EASEMENT AS PER OFFICIAL RECORDS BOOK 2057, PAGE 2295

- SURVEYOR'S NOTES:**
- THIS PLAT AS RECORDED IN ITS ORIGINAL FORM IN THE PUBLIC RECORDS IS THE OFFICIAL DEPICTION OF THE SUBDIVIDED LANDS DESCRIBED HEREON AND WILL IN NO CIRCUMSTANCES BE SUPPLANTED IN AUTHORITY BY ANY OTHER FORM OF THE PLAT, WHETHER GRAPHIC OR DIGITAL.
  - THERE MAY BE ADDITIONAL RESTRICTIONS THAT ARE NOT RECORDED ON THIS PLAT THAT MAY BE FOUND IN THE PUBLIC RECORDS OF THIS COUNTY.
  - IN THE EVENT THAT MARTIN COUNTY DISTURBS THE SURFACE OF A PRIVATE STREET DUE TO MAINTENANCE, REPAIR OR REPLACEMENT OF A PUBLIC IMPROVEMENT LOCATED THEREON, THEN THE COUNTY SHALL BE RESPONSIBLE FOR RESTORING THE STREET SURFACE ONLY TO THE EXTENT WHICH WOULD BE REQUIRED IF THE STREET WERE A PUBLIC STREET, IN ACCORDANCE WITH COUNTY SPECIFICATIONS.
  - BEARINGS ARE BASED ON THE NORTH LINE OF THE NORTHEAST ONE QUARTER (1/4) OF SECTION 18, TOWNSHIP 37 SOUTH, RANGE 41 EAST, MARTIN COUNTY, FLORIDA, AS CALCULATED BASED ON STATE PLANE COORDINATE VALUES FOR THE SECTION CORNER AT THE NORTHEAST CORNER OF SECTION 18, TOWNSHIP 37 SOUTH, RANGE 41 EAST AND THE NORTH (1/4) CORNER OF SECTION 18, TOWNSHIP 37 SOUTH, RANGE 41 EAST. SAID LINE BEARS NORTH 89°42'24" EAST (STATE PLANE COORDINATE VALUES ARE REFERENCED TO THE NAD83 STATE PLANE COORDINATE SYSTEM, FLORIDA EAST ZONE 0901 AND ARE IN UNITS OF U.S. SURVEY FEET).
  - WHERE DRAINAGE AND UTILITY EASEMENTS CROSS, DRAINAGE EASEMENTS SHALL TAKE PRECEDENCE.
  - THERE SHALL BE NO BUILDING OR ANY KIND OF CONSTRUCTION OR TREES OR SHRUBS PLACED ON DRAINAGE EASEMENTS.
  - THERE SHALL BE NO BUILDING OR ANY PERMANENT STRUCTURES PLACED ON UTILITY EASEMENTS.
  - THE LANDS BOUND BY THIS SURVEY ARE LOCATED IN FLOOD ZONE "AH" (FLOOD DEPTHS OF 1 TO 3 FEET) AND FLOOD ZONE "X" (AREAS DETERMINED TO BE OUTSIDE THE 500-YEAR FLOOD PLAN) PER F.I.R.M. FLOOD INSURANCE RATE MAP NUMBER 12085C0020F, DATED OCTOBER 4, 2002.

**CREECH ENGINEERS, INC.**  
 CIVILIZATION ENGINEERED  
 2000 N.E. JENSEN BEACH BLVD., FLORIDA 34687 (772) 283-1413  
 4480 WEST EAU GALLE BLVD., MELBOURNE, FL 32934 (321) 255-9434  
 707 EAST PARK AVENUE, TALLAHASSEE, FL 32301 (850) 841-1708  
 SHEET 2 OF 3