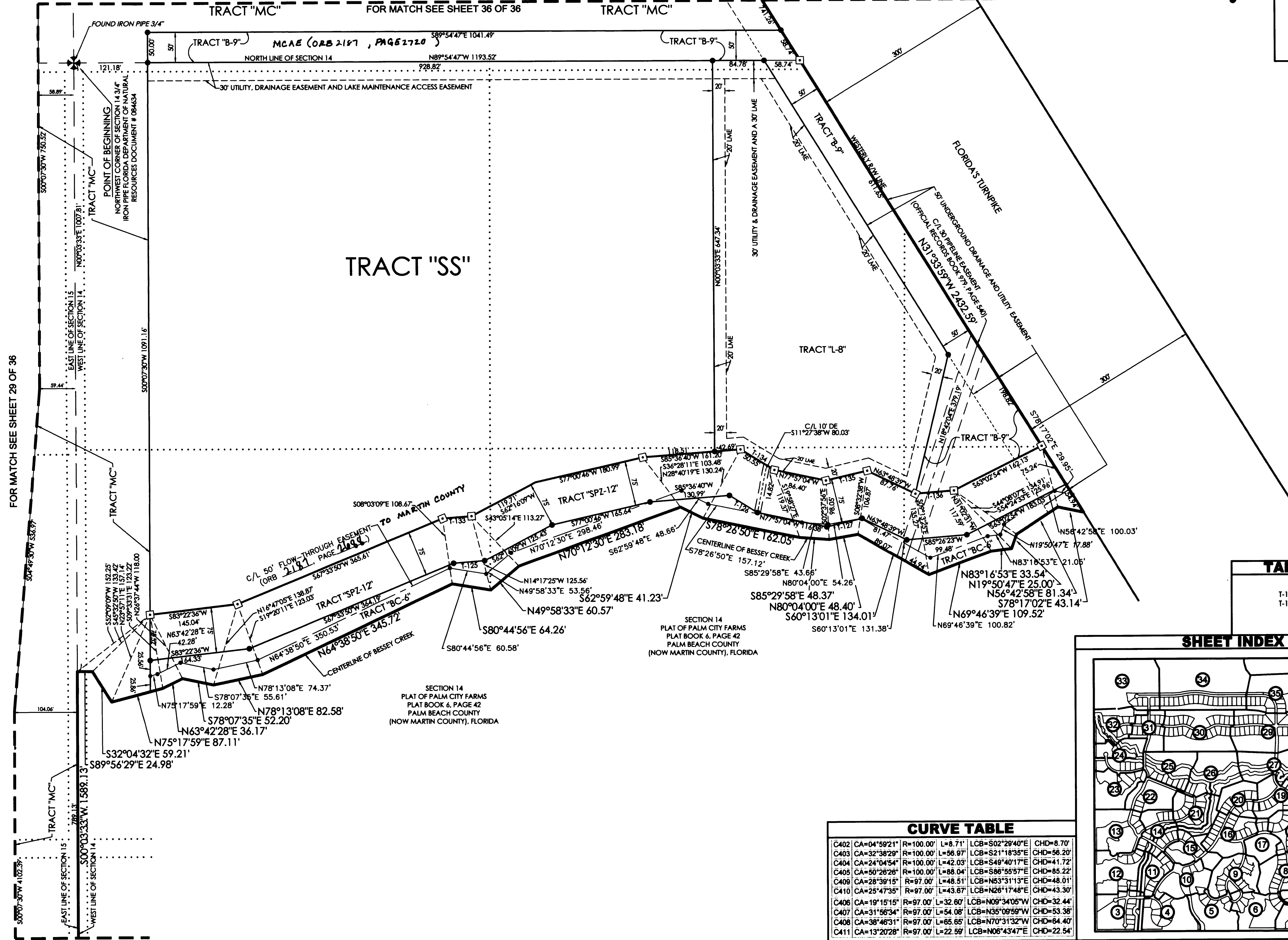
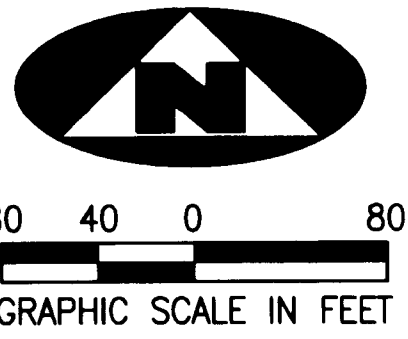


TUSCAWILLA PUD

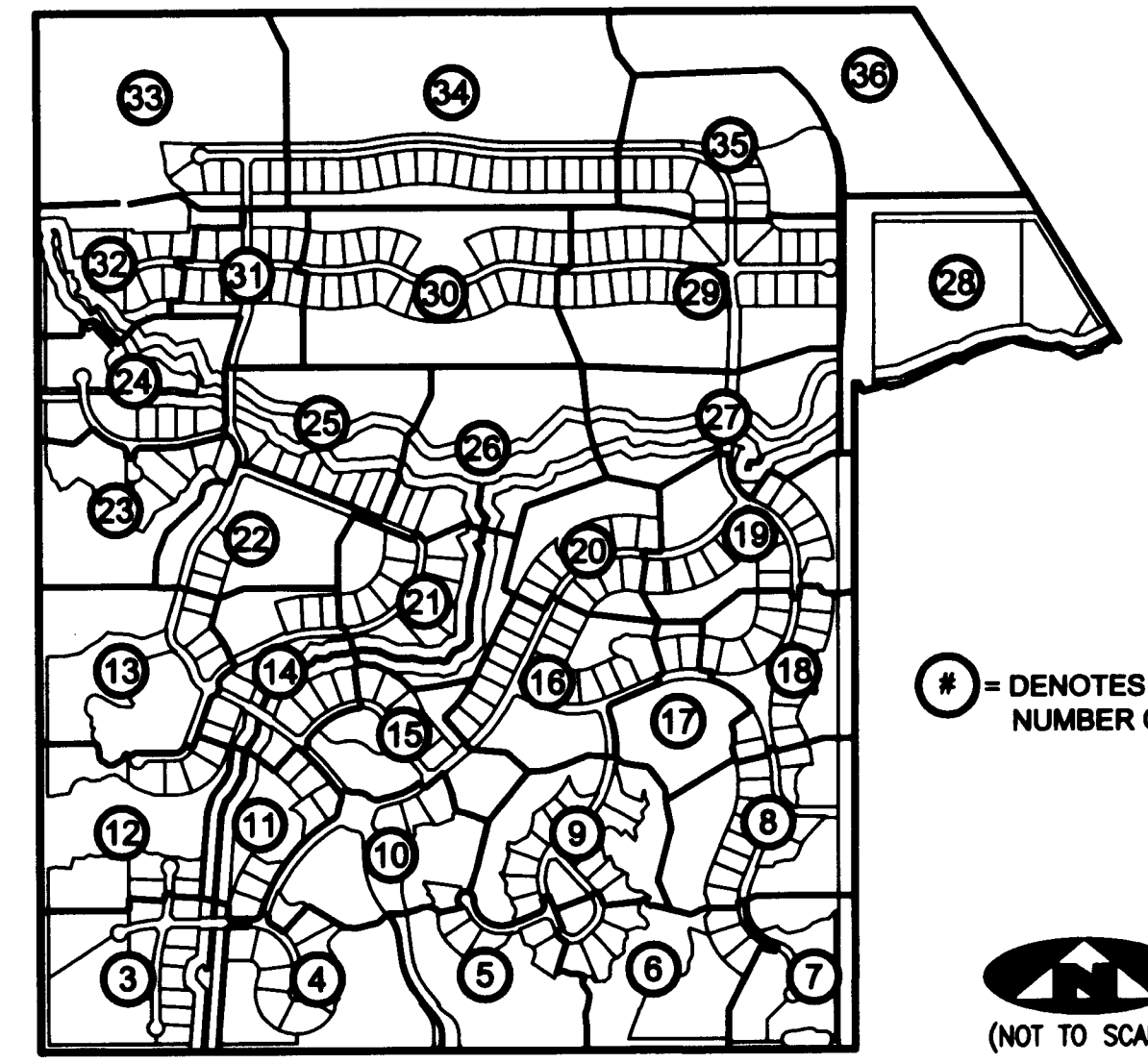
BEING A REPLAT OF A PORTION OF SECTIONS 14 AND 15, TOWNSHIP 38 SOUTH, RANGE 40 EAST, PALM CITY FARMS, RECORDED IN PLAT BOOK 6, PAGE 42, PUBLIC RECORDS PALM BEACH COUNTY (NOW MARTIN COUNTY), FLORIDA, AND BEING A PART OF SECTIONS 10 AND 11, TOWNSHIP 38 SOUTH, RANGE 40 EAST, MARTIN COUNTY, FLORIDA



TANGENT TABLE

T-125	S85°30'07"W	51.38'
T-133	S85°30'07"W	47.80'

SHEET INDEX



CURVE TABLE

C402	CA=04°59'21"	R=100.00'	L=8.71'	LCB=S02°29'40"E	CHD=8.70'
C403	CA=32°38'29"	R=100.00'	L=56.97'	LCB=S21°18'35"E	CHD=56.20'
C404	CA=24°04'54"	R=100.00'	L=42.03'	LCB=S49°40'17"E	CHD=41.72'
C405	CA=50°26'26"	R=100.00'	L=88.04'	LCB=S86°55'57"E	CHD=85.22'
C406	CA=28°39'15"	R=97.00'	L=48.51'	LCB=N53°31'13"E	CHD=48.01'
C410	CA=25°47'35"	R=97.00'	L=43.67'	LCB=N26°17'48"E	CHD=43.30'
C406	CA=19°15'15"	R=97.00'	L=32.60'	LCB=N09°34'05"W	CHD=32.44'
C407	CA=31°56'34"	R=97.00'	L=54.08'	LCB=N35°08'59"W	CHD=53.38'
C408	CA=38°46'31"	R=97.00'	L=65.65'	LCB=N70°31'32"W	CHD=64.40'
C411	CA=13°20'28"	R=97.00'	L=22.59'	LCB=N06°43'47"E	CHD=22.54'

LEGEND

(R)	DENOTES A RADIAL LINE	R	DENOTES RADIUS DISTANCE
C/L	DENOTES A CENTERLINE	L	DENOTES ARC LENGTH DISTANCE
DE	DENOTES A PRIVATE DRAINAGE EASEMENT	CA	DENOTES CENTRAL ANGLE
UE	DENOTES UTILITY EASEMENT	LCB	DENOTES LONG CHORD BEARING
LSE	DENOTES LIFT STATION EASEMENT	CHD	DENOTES CHORD DISTANCE
MCAE	DENOTES MARTIN COUNTY ACCESS EASEMENT	ORB	DENOTES OFFICIAL RECORDS BOOK
FM	DENOTES FORCEMAIN EASEMENT	TR	DENOTES TRACT LINE OF THE PLAT OF PALM CITY FARMS PLAT BOOK 6, PAGE 42.
LME	DENOTES LAKE MAINTENANCE EASEMENT		

SURVEYOR'S NOTES

1. THE BASE BEARING, AS SHOWN HEREON, IS N89°58'48"W ALONG THE SOUTHWEST CORNER OF THE SOUTHWEST ONE-QUARTER OF SECTION 15, TOWNSHIP 38 SOUTH, RANGE 40 EAST.
2. IN THOSE INSTANCES WHERE UTILITY OR DRAINAGE STRUCTURES ARE CONSTRUCTED IN CONFLICT WITH THE PLATTED PERMANENT CONTROL POINT POSITION STRADDLERS MONUMENTED AS PERMANENT CONTROL POINTS WILL BE SET TO REFERENCE THE PLATTED POSITION.
3. LINES THAT INTERSECT CURVES ARE RADIAL UNLESS OTHERWISE NOTED.
4. THIS INSTRUMENT WAS PREPARED BY WM. R. VAN CAMPEN, PROFESSIONAL SURVEYOR AND MAPPER NO. 2424, IN AND FOR THE OFFICES OF ASSOCIATED LAND SURVEYORS, INC., 4152 WEST BLUE HERON BOULEVARD, SUITE 121, RIVIERA BEACH, FLORIDA, 33404

ASSOCIATED LAND SURVEYORS, INC.
 4152 W. BLUE HERON BOULEVARD - SUITE 121
 RIVIERA BEACH, FLORIDA 33404 LB 7344
 PHONE: (561) 848-2102 FAX: (561) 844-9659 EMAIL: ALLSURVEY@AOL.COM

FILE: P260PLAT	
FB:	WO.NO.: P260
SCALE: 1"=80'	DATE: 1/8/2005
DWN: KVC	SHEET 28 OF 36