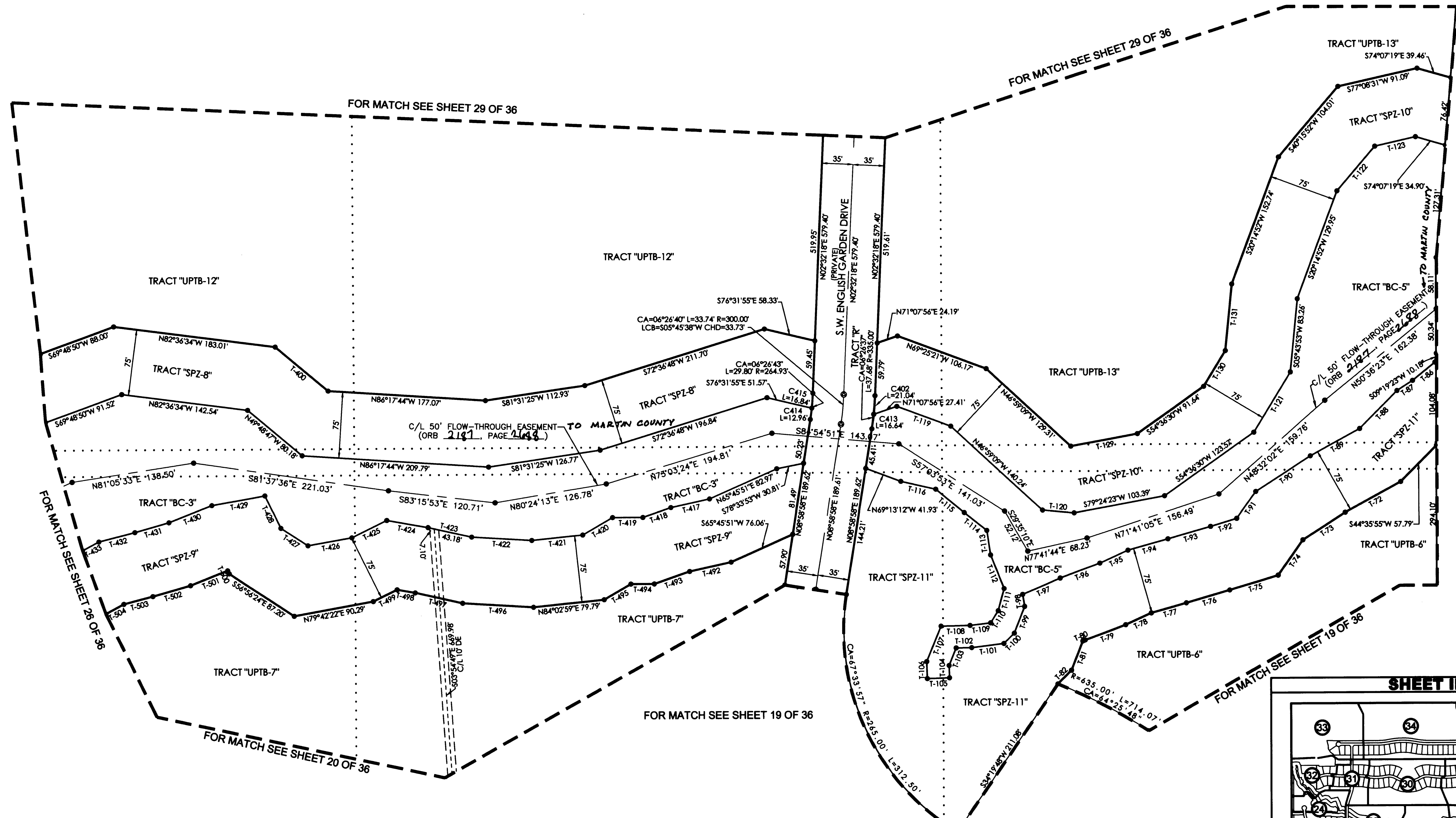
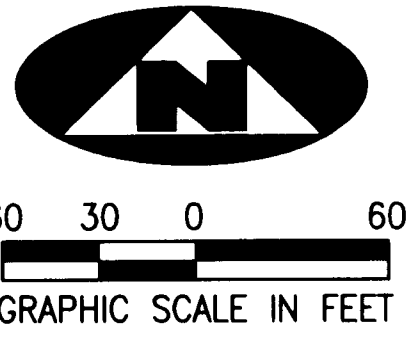


JULY 2006

TUSCAWILLA PUD

BEING A REPLAT OF A PORTION OF SECTIONS 14 AND 15, TOWNSHIP 38 SOUTH, RANGE 40 EAST, PALM CITY FARMS, RECORDED IN PLAT BOOK 6, PAGE 42, PUBLIC RECORDS PALM BEACH COUNTY (NOW MARTIN COUNTY), FLORIDA, AND BEING A PART OF SECTIONS 10 AND 11, TOWNSHIP 38 SOUTH, RANGE 40 EAST, MARTIN COUNTY, FLORIDA

SHEET 27 OF 36
PLAT BK 16 Pg 59



TANGENT TABLE

T-70 N56°38'37"E 12.89'	T-87 N56°38'37"E 21.01'	T-104 N01°42'18"W 13.83'	T-128 S71°07'56"W 35.03'	T-420 N59°44'48"E 38.98'	T-495 N59°44'48"E 34.85'
T-71 N44°35'55"E 62.85'	T-88 N44°35'55"E 60.01'	T-105 N88°17'42"E 25.00'	T-129 S79°24'23"W 76.26'	T-421 N84°02'59"E 57.50'	T-496 S84°34'56"E 79.84'
T-72 N60°55'24"E 71.43'	T-89 N60°55'24"E 63.28'	T-106 S01°42'18"W 19.09'	T-130 S31°20'12"W 47.26'	T-422 S86°34'56"E 67.64'	T-497 S77°21'24"E 54.58'
T-73 N56°55'57"E 56.86'	T-90 N56°55'57"E 73.71'	T-107 S22°05'32"W 43.04'	T-131 S05°43'53"W 75.77'	T-423 S77°21'24"E 50.28'	T-498 S80°02'34"E 20.66'
T-74 N35°26'07"E 48.76'	T-91 N35°26'07"E 37.31'	T-108 S88°47'22"W 24.58'	T-132 S01°42'18"E 34.90'	T-424 S80°02'34"E 47.03'	T-499 N63°37'56"E 29.88'
T-75 N73°14'44"E 56.85'	T-92 N73°14'44"E 30.75'	T-109 S83°00'15"W 23.24'	T-133 S88°47'22"W 24.58'	T-425 N63°37'56"E 43.90'	T-500 S25°48'27"E 3.92'
T-76 N73°52'50"E 50.79'	T-93 N73°52'50"E 50.08'	T-110 S32°03'18"W 16.16'	T-134 S83°00'15"W 23.24'	T-426 N79°42'22"E 49.89'	T-501 N68°25'29"E 44.80'
T-77 N74°19'35"E 41.02'	T-94 N74°19'35"E 46.64'	T-111 S13°07'28"W 25.68'	T-135 S76°58'32"E 27.13'	T-427 S56°56'24"E 36.49'	T-502 N74°03'06"E 44.29'
T-78 N65°18'44"E 31.58'	T-95 N65°18'44"E 34.71'	T-112 S21°40'43"E 40.79'	T-136 N49°48'47"W 77.53'	T-428 S25°48'27"E 40.85'	T-503 N75°16'07"E 33.80'
T-79 N69°54'20"E 48.58'	T-96 N69°54'20"E 47.64'	T-113 S08°26'10"E 28.04'	T-137 N76°31'55"W 68.41'	T-429 N79°39'23"E 60.59'	
T-80 N66°45'32"E 2.94'	T-97 N66°45'32"E 46.01'	T-114 S51°27'17"E 32.26'	T-138 N68°25'29"E 52.22'	T-430 N68°25'29"E 52.22'	
T-81 N21°19'41"E 35.25'	T-98 N09°21'24"W 13.72'	T-115 S50°09'40"E 41.70'	T-431 N74°03'06"E 39.80'	T-431 N74°03'06"E 39.80'	
T-82 N45°12'02"E 21.86'	T-99 N21°19'41"E 32.09'	T-116 S74°58'32"E 39.93'	T-432 N75°16'07"E 41.92'	T-432 N75°16'07"E 41.92'	
T-83 N34°12'48"E 7.11'	T-100 N45°12'02"E 16.60'	T-117 S69°13'12"E 52.15'	T-433 N77°28'10"E 47.89'	T-433 N77°28'10"E 47.89'	
T-84 N07°32'42"E 34.38'	T-101 N83°00'15"E 36.41'	T-118 S71°07'56"W 38.48'	T-434 N70°52'05"E 33.60'	T-434 N70°52'05"E 33.60'	
T-85 N09°19'23"E 45.66'	T-102 N88°47'22"E 17.73'	T-119 N69°25'21"W 64.41'	T-435 S89°59'10"E 33.99'	T-435 S89°59'10"E 33.99'	
T-86 N50°53'53"E 32.63'	T-103 N22°05'32"E 21.32'	T-120 N84°48'27"W 35.77'			

CURVE TABLE

C108 CA=90°00'00" R=75.00' L=117.81' LCB=S46°42'18"E CHD=108.07'
C402 CA=04°59'21" R=100.00' L=8.71' LCB=S02°29'40"E CHD=8.70'
C414 CA=02°48'09" R=284.93' L=12.96' LCB=N07°34'53"E CHD=12.96'
C413 CA=02°50'54" R=334.68' L=16.84' LCB=N07°33'33"E CHD=16.84'
C415 CA=03°38'34" R=284.93' L=16.84' LCB=N04°21'32"E CHD=16.84'

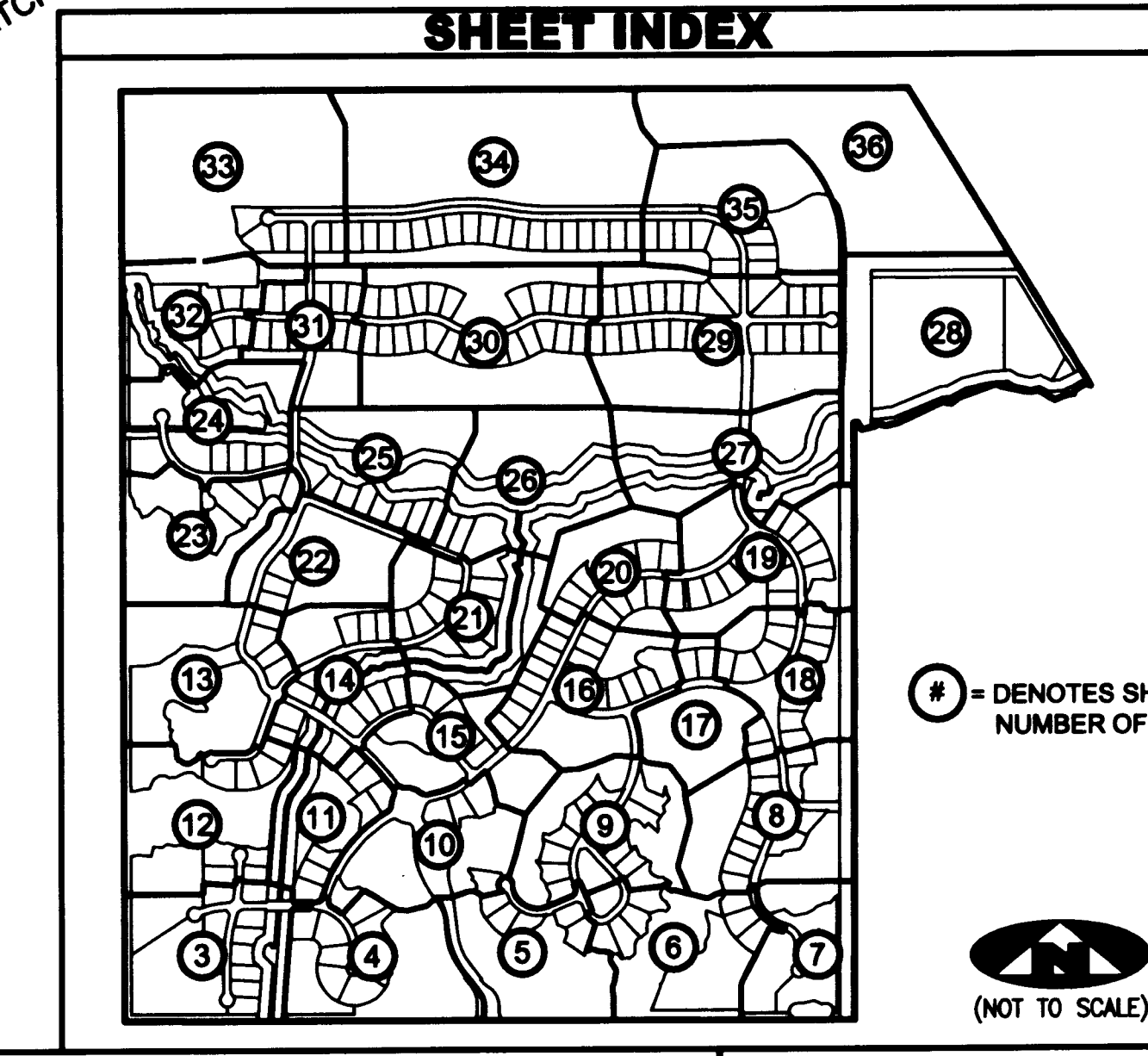
LEGEND

(R) DENOTES A RADIAL LINE	R DENOTES RADIUS DISTANCE	□ DENOTES A SET PERMANENT REFERENCE MONUMENT
C/L DENOTES A CENTERLINE	L DENOTES ARC LENGTH DISTANCE	4" x 4" CONCRETE MONUMENT WITH DISK (LB 7344)
DE DENOTES A PRIVATE DRAINAGE EASEMENT	CA DENOTES CENTRAL ANGLE	● DENOTES A 5/8" IRON ROD AND CAP (LB 7344)
UE DENOTES UTILITY EASEMENT	LCB DENOTES LONG CHORD BEARING	⊙ DENOTES A SET PERMANENT CONTROL POINT CARRIAGE BOLT AND WASHER (LB 7344)
LSE DENOTES LIFT STATION EASEMENT	CHD DENOTES CHORD DISTANCE	⊙ DENOTES A FOUND PERMANENT CONTROL POINT CARRIAGE BOLT AND WASHER
MCAE DENOTES MARTIN COUNTY ACCESS EASEMENT	ORB DENOTES OFFICIAL RECORDS BOOK	
FM DENOTES FORECROWN EASEMENT DENOTES TRACT LINE OF THE PLAT OF PALM CITY FARMS PLAT BOOK 6, PAGE 42.	
LME DENOTES LAKE MAINTENANCE EASEMENT		

SURVEYOR'S NOTES

- THE BASE BEARING, AS SHOWN HEREON, IS N89°58'48"W ALONG THE SOUTHLINE OF THE SOUTHWEST ONE-QUARTER OF SECTION 15, TOWNSHIP 38 SOUTH, RANGE 40 EAST.
- IN THOSE INSTANCES WHERE UTILITY OR DRAINAGE STRUCTURES ARE CONSTRUCTED IN CONFLICT WITH THE PLATTED PERMANENT CONTROL POINT POSITION STRADDLERS MONUMENTED AS PERMANENT CONTROL POINTS WILL BE SET TO REFERENCE THE PLATTED POSITION.
- LINE(S) THAT INTERSECT CURVES ARE RADIAL UNLESS OTHERWISE NOTED.
- THIS INSTRUMENT WAS PREPARED BY WM. R. VAN CAMPEN, PROFESSIONAL SURVEYOR AND MAPPER NO. 2424, IN AND FOR THE OFFICES OF ASSOCIATED LAND SURVEYORS, INC., 4152 WEST BLUE HERON BOULEVARD, SUITE 121, RIVIERA BEACH, FLORIDA, 33404.

ASSOCIATED LAND SURVEYORS, INC.
 4152 W. BLUE HERON BOULEVARD—SUITE 121
 RIVIERA BEACH FLORIDA 33404 LB 7344
 PHONE: (561) 848-2102 FAX: (561) 844-9659 EMAIL: ALSURVEY@AOL.COM



FILE: P280PLAT

FB:	WO.NO.: P280
SCALE: 1"=60'	DATE: 1/8/2005
DWN: KVC	SHEET 27 OF 36