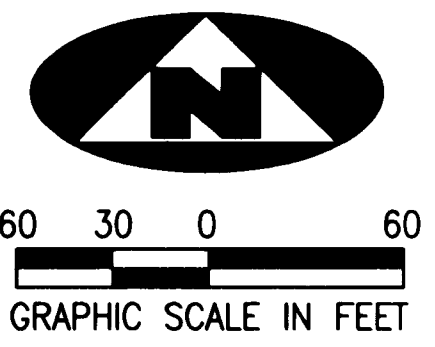


JULY 2006

# TUSCAWILLA PUD

BEING A REPLAT OF A PORTION OF SECTIONS 14 AND 15, TOWNSHIP 38 SOUTH, RANGE 40 EAST, PALM CITY FARMS, RECORDED IN PLAT BOOK 6, PAGE 42, PUBLIC RECORDS PALM BEACH COUNTY (NOW MARTIN COUNTY), FLORIDA, AND BEING A PART OF SECTIONS 10 AND 11, TOWNSHIP 38 SOUTH, RANGE 40 EAST, MARTIN COUNTY, FLORIDA

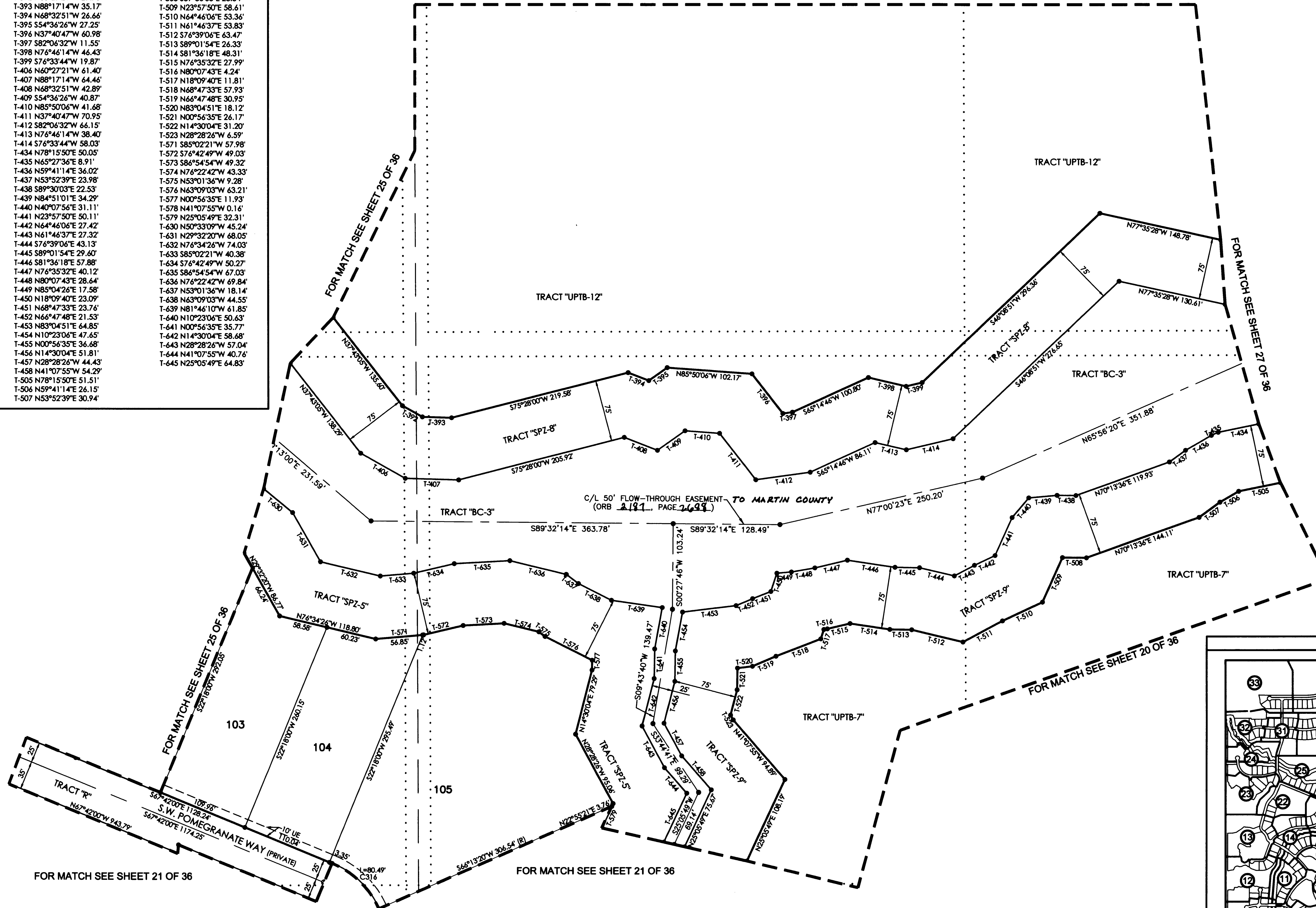
SHEET 26 OF 36  
PLAT BK 16 Pg 39



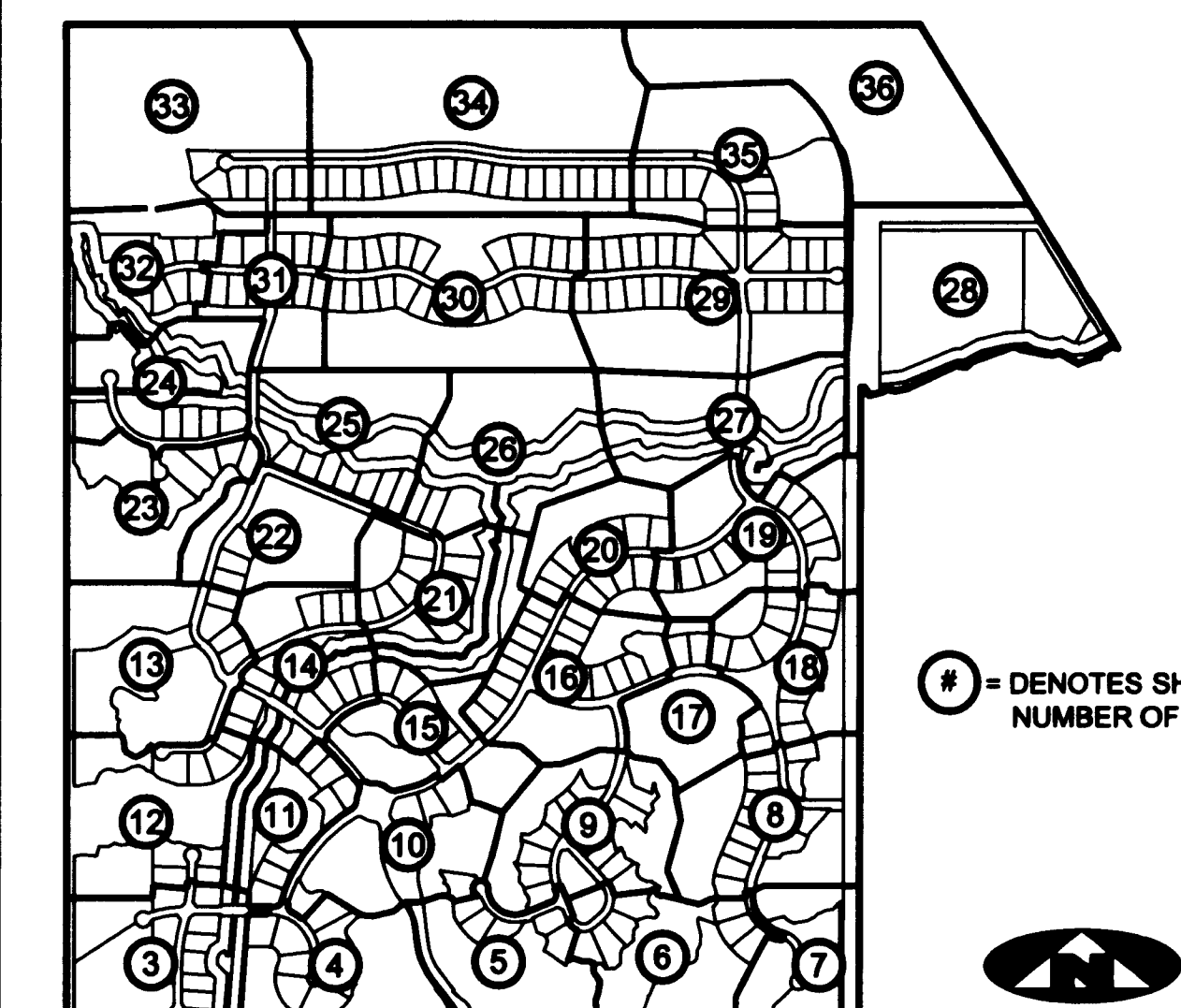
### TANGENT TABLE

T-392 N60°27'21"W 27.73'	T-508 S89°30'03"E 28.84'
T-393 N88°17'14"W 35.17'	T-509 N23°57'50"E 58.61'
T-394 N68°32'51"W 26.66'	T-510 N64°46'06"E 53.36'
T-395 S54°36'26"W 27.25'	T-511 N61°46'37"E 53.83'
T-396 N37°40'47"W 60.98'	T-512 S76°39'06"E 63.47'
T-397 S82°06'32"W 11.55'	T-513 S89°01'54"E 26.33'
T-398 N76°46'14"W 46.43'	T-514 S81°36'18"E 48.31'
T-399 S76°33'44"W 19.87'	T-515 N76°35'32"E 27.99'
T-406 N60°27'21"W 61.40'	T-516 N80°07'43"E 4.24'
T-407 N88°17'14"W 64.46'	T-517 N18°09'40"E 11.81'
T-408 N68°32'51"W 42.89'	T-518 N68°47'33"E 57.93'
T-409 S54°36'26"W 40.87'	T-519 N66°47'48"E 30.95'
T-410 N85°50'06"W 41.68'	T-520 N83°04'51"E 18.12'
T-411 N37°40'47"W 70.95'	T-521 N00°56'35"E 26.17'
T-412 S82°06'32"W 66.15'	T-522 N14°30'04"E 31.20'
T-413 N76°46'14"W 38.40'	T-523 N28°28'26"W 6.59'
T-414 S76°33'44"W 58.03'	T-571 S85°02'21"W 57.98'
T-434 N78°15'50"E 50.05'	T-572 S76°42'49"W 49.03'
T-435 N65°27'36"E 8.91'	T-573 S86°54'54"W 49.32'
T-436 N59°41'14"E 36.02'	T-574 N76°22'42"W 43.33'
T-437 N53°52'39"E 23.98'	T-575 N53°01'34"W 9.28'
T-438 S89°30'03"E 22.53'	T-576 N63°09'03"W 63.21'
T-439 N84°51'01"E 34.29'	T-577 N00°56'35"E 11.93'
T-440 N40°07'56"E 31.11'	T-578 N41°07'55"W 0.16'
T-441 N23°57'50"E 50.11'	T-579 N25°05'49"E 32.31'
T-442 N64°46'06"E 27.42'	T-630 N50°33'09"W 45.24'
T-443 N61°46'37"E 27.32'	T-631 N29°32'20"W 68.05'
T-444 S76°39'06"E 43.13'	T-632 N76°34'26"W 74.03'
T-445 S89°01'54"E 29.60'	T-633 S85°02'21"W 40.38'
T-446 S81°36'18"E 57.88'	T-634 S76°42'49"W 50.27'
T-447 N76°35'32"E 40.12'	T-635 S86°54'54"W 67.03'
T-448 N80°07'43"E 28.64'	T-636 N76°22'42"W 69.84'
T-449 N85°04'26"E 17.58'	T-637 N53°01'36"W 18.14'
T-450 N18°09'40"E 23.09'	T-638 N63°09'03"W 44.55'
T-451 N68°47'33"E 23.76'	T-639 N81°46'10"W 61.85'
T-452 N66°47'48"E 21.53'	T-640 N10°23'06"E 50.63'
T-453 N83°04'51"E 64.85'	T-641 N00°56'35"E 35.77'
T-454 N10°23'06"E 47.65'	T-642 N14°30'04"E 58.68'
T-455 N00°56'35"E 36.88'	T-643 N28°28'26"W 57.04'
T-456 N14°30'04"E 51.81'	T-644 N41°07'55"W 40.76'
T-457 N28°28'26"W 44.43'	T-645 N25°05'49"E 64.83'
T-458 N41°07'55"W 54.29'	
T-505 N78°15'50"E 51.51'	
T-504 N59°41'14"E 26.15'	
T-507 N53°52'39"E 30.94'	

FOR MATCH SEE SHEET 30 OF 36



### SHEET INDEX



# = DENOTES SHEET NUMBER OF 36



### CURVE TABLE

C316	CA=43°55'20"	R=105.00'	L=80.49'	LCB=N45°44'20"W	CHD=78.54'
------	--------------	-----------	----------	-----------------	------------

### LEGEND

(R)	DENOTES A RADIAL LINE	R	DENOTES RADIUS DISTANCE
C/L	DENOTES A CENTERLINE	L	DENOTES ARC LENGTH DISTANCE
DE	DENOTES A PRIVATE DRAINAGE EASEMENT	CA	DENOTES CENTRAL ANGLE
UE	DENOTES UTILITY EASEMENT	LCB	DENOTES LONG CHORD BEARING
LSE	DENOTES LIFT STATION EASEMENT	CHD	DENOTES CHORD DISTANCE
MCAE	DENOTES MARTIN COUNTY ACCESS EASEMENT	ORB	DENOTES OFFICIAL RECORDS BOOK
FM	DENOTES FOREGAIN EASEMENT	.....	DENOTES TRACT LINE OF THE PLAT OF PALM CITY FARMS PLAT BOOK 6, PAGE 42.
LME	DENOTES LAKE MAINTENANCE EASEMENT		
□	DENOTES A SET PERMANENT REFERENCE MONUMENT		
●	DENOTES A 5/8" IRON ROD AND CAP (LB 7344)		
⊙	DENOTES A SET PERMANENT CONTROL POINT CARRIAGE BOLT AND WASHER (LB 7344)		
⊙	DENOTES A FOUND PERMANENT CONTROL POINT CARRIAGE BOLT AND WASHER		

### SURVEYOR'S NOTES

1. THE BASE BEARING, AS SHOWN HEREON, IS N89°58'48"W ALONG THE SOUTHLINE OF THE SOUTHWEST ONE-QUARTER OF SECTION 15, TOWNSHIP 38 SOUTH, RANGE 40 EAST.
2. IN THOSE INSTANCES WHERE UTILITY OR DRAINAGE STRUCTURES ARE CONSTRUCTED IN CONFLICT WITH THE PLATTED PERMANENT CONTROL POINT POSITION STRADDLERS MONUMENTED AS PERMANENT CONTROL POINTS WILL BE SET TO REFERENCE THE PLATTED POSITION.
3. LINES THAT INTERSECT CURVES ARE RADIAL UNLESS OTHERWISE NOTED.
4. THIS INSTRUMENT WAS PREPARED BY WM. R. VAN CAMPEN, PROFESSIONAL SURVEYOR AND MAPPER NO. 2424, IN AND FOR THE OFFICES OF ASSOCIATED LAND SURVEYORS, INC., 4152 WEST BLUE HERON BOULEVARD, SUITE 121, RIVIERA BEACH, FLORIDA, 33404.



**ASSOCIATED LAND SURVEYORS, INC.**  
 4152 W. BLUE HERON BOULEVARD—SUITE 121  
 RIVIERA BEACH FLORIDA 33404 LB 7344  
 PHONE: (561) 848-2102 FAX: (561) 844-9659 EMAIL: ALSURVEY@AOL.COM

FILE: P280PLAT
FB: WO.NO.: P280
SCALE: 1"=60' DATE: 1/8/2005
DWN: KVC SHEET 26 OF 36