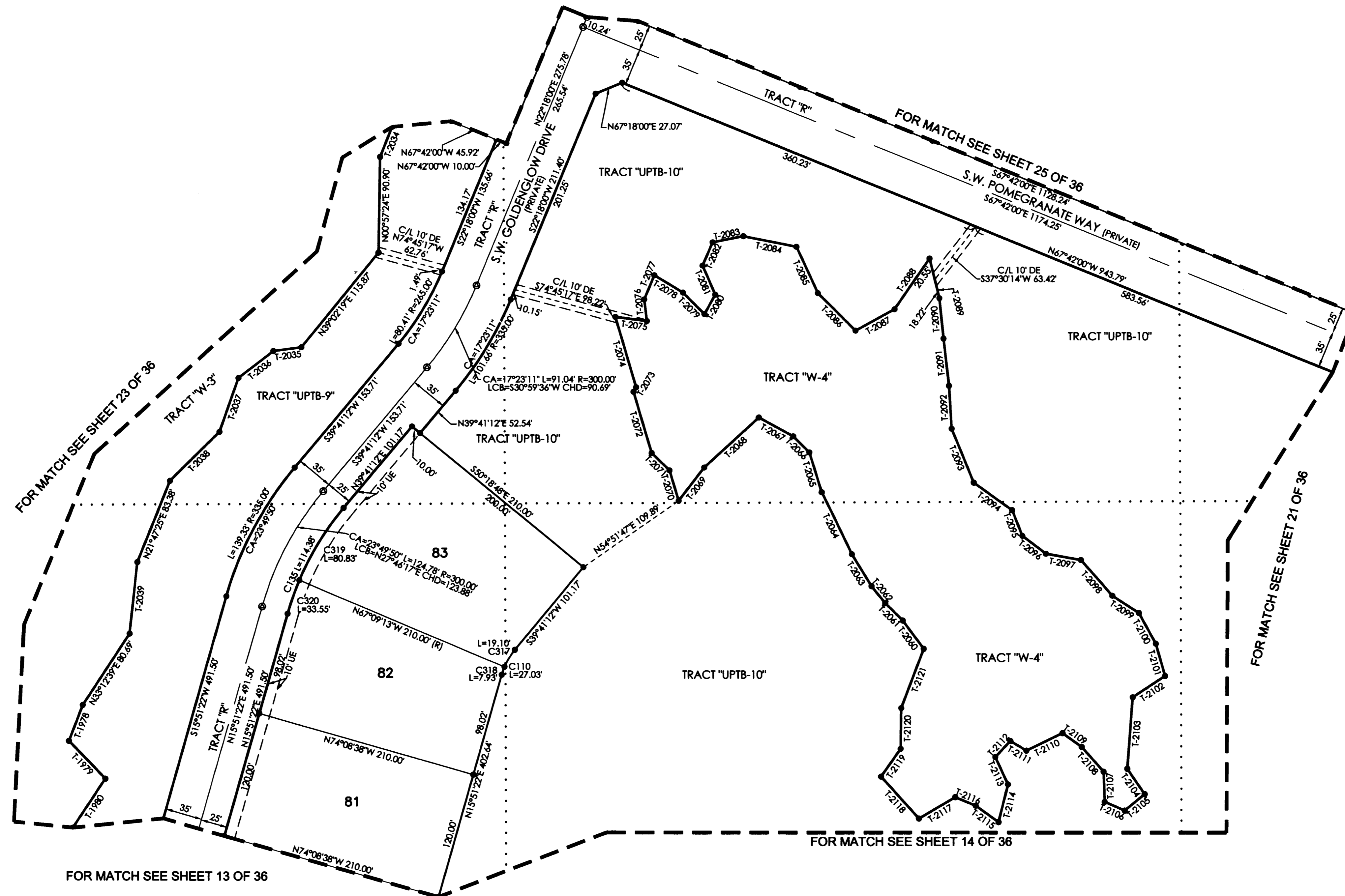
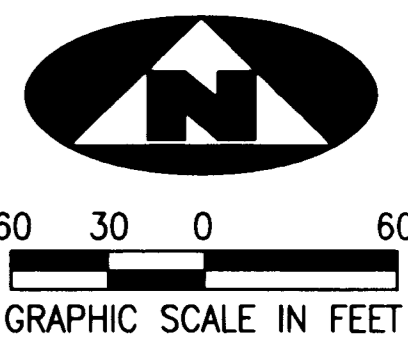


JULY 2006

# TUSCAWILLA PUD

BEING A REPLAT OF A PORTION OF SECTIONS 14 AND 15, TOWNSHIP 38 SOUTH, RANGE 40 EAST, PALM CITY FARMS, RECORDED IN PLAT BOOK 6, PAGE 42, PUBLIC RECORDS PALM BEACH COUNTY (NOW MARTIN COUNTY), FLORIDA, AND BEING A PART OF SECTIONS 10 AND 11, TOWNSHIP 38 SOUTH, RANGE 40 EAST, MARTIN COUNTY, FLORIDA

SHEET 22 OF 36  
PLAT Bk 16 Pg 59



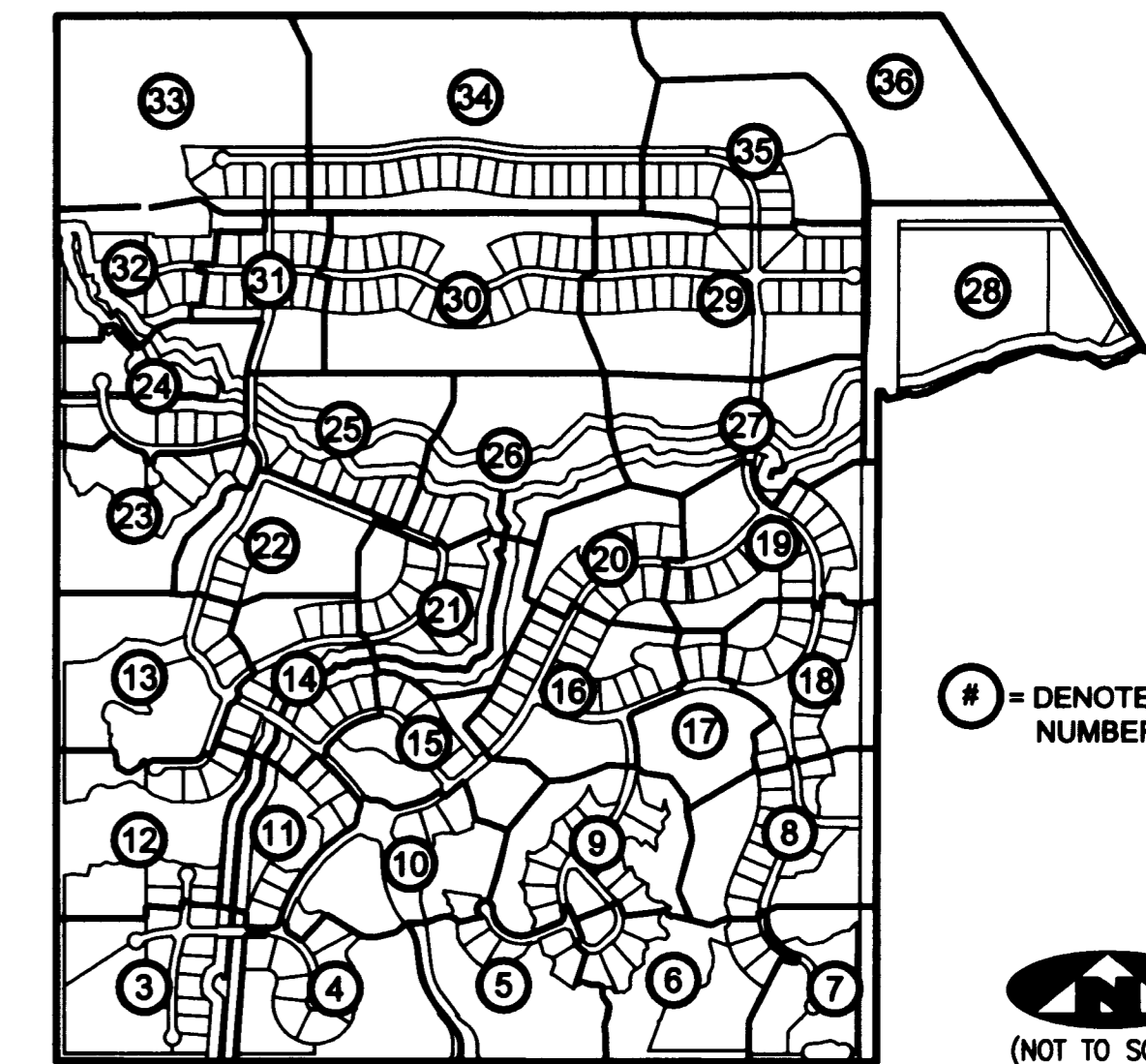
### CURVE TABLE

C110	CA=23°49'50"	R=65.00'	L=27.03'	LCB=S27°46'17"W	CHD=26.84'
C317	CA=16°50'25"	R=65.00'	L=19.10'	LCB=S31°15'59"W	CHD=19.04'
C318	CA=06°59'25"	R=65.00'	L=7.93'	LCB=S19°21'04"W	CHD=7.93'
C319	CA=16°50'25"	R=275.00'	L=80.83'	LCB=S31°15'59"W	CHD=80.54'
C320	CA=06°59'25"	R=275.00'	L=33.55'	LCB=S19°21'04"W	CHD=33.53'

### TANGENT TABLE

T-1978 N21°00'45"E 36.43'	T-2087 S60°59'17"W 41.80'
T-1979 N44°04'10"W 49.42'	T-2088 S34°28'03"W 58.39'
T-1980 N33°32'38"E 55.37'	T-2089 N13°41'53"W 58.77'
T-2034 N21°44'45"E 30.79'	T-2090 N05°47'24"W 38.59'
T-2035 N82°19'27"E 26.60'	T-2091 N06°29'03"W 45.07'
T-2036 N82°01'32"E 41.71'	T-2092 N03°23'58"W 41.10'
T-2037 N19°09'43"E 54.54'	T-2093 N22°00'51"W 55.51'
T-2038 N45°03'43"E 66.30'	T-2094 N54°13'24"W 44.78'
T-2039 N06°11'54"E 67.91'	T-2095 N21°07'08"W 26.21'
T-2040 S36°32'40"E 33.27'	T-2096 N52°45'20"W 28.07'
T-2041 S45°14'26"E 23.03'	T-2097 N79°41'14"W 33.49'
T-2042 S38°46'57"E 20.70'	T-2098 N41°13'28"W 44.83'
T-2043 S31°14'38"E 35.43'	T-2099 N57°01'16"W 30.13'
T-2044 S25°51'08"E 65.49'	T-2100 N28°49'00"W 33.15'
T-2045 S17°01'06"E 39.71'	T-2101 N15°49'44"W 31.58'
T-2046 S44°38'01"E 21.66'	T-2102 N56°32'55"E 36.59'
T-2047 S60°56'44"E 37.04'	T-2103 N04°16'10"E 67.62'
T-2048 N47°11'41"E 70.41'	T-2104 N34°22'42"W 28.88'
T-2049 N37°18'06"E 39.89'	T-2105 N50°20'58"E 24.39'
T-2070 S16°23'05"E 30.14'	T-2106 S66°13'04"E 20.61'
T-2071 S45°10'42"E 23.66'	T-2107 S02°06'48"E 28.38'
T-2072 S16°19'43"E 60.99'	T-2108 S41°40'20"E 31.10'
T-2073 S30°11'27"W 5.00'	T-2109 S54°14'57"E 22.25'
T-2074 S16°18'30"E 69.64'	T-2110 N64°11'52"E 37.82'
T-2075 N82°39'02"W 29.99'	T-2111 S59°12'31"E 17.69'
T-2076 S06°44'59"E 20.59'	T-2112 N42°53'47"E 20.65'
T-2077 S22°41'54"W 24.78'	T-2113 N24°51'37"W 28.39'
T-2078 N58°40'30"W 31.40'	T-2114 N14°07'37"E 36.60'
T-2079 N44°48'31"W 28.89'	T-2115 S54°33'41"E 26.75'
T-2080 S28°45'08"W 21.09'	T-2116 S47°22'18"E 20.92'
T-2081 S23°10'25"E 30.03'	T-2117 N59°23'11"E 39.70'
T-2082 S23°15'55"W 23.99'	T-2118 S41°58'15"E 53.25'
T-2083 S78°40'15"W 29.53'	T-2119 S35°14'00"W 31.99'
T-2084 N78°41'17"W 51.10'	T-2120 S00°43'44"W 38.38'
T-2085 N24°35'23"W 48.40'	T-2121 S20°43'36"W 59.99'
T-2086 N45°05'52"W 50.44'	

### SHEET INDEX



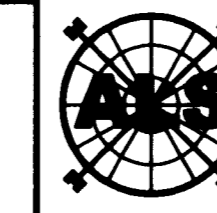
### LEGEND

(R)	DENOTES A RADIAL LINE	R	DENOTES RADIUS DISTANCE
C/L	DENOTES A CENTERLINE	L	DENOTES ARC LENGTH DISTANCE
DE	DENOTES A PRIVATE DRAINAGE EASEMENT	CA	DENOTES CENTRAL ANGLE
UE	DENOTES UTILITY EASEMENT	LCB	DENOTES LONG CHORD BEARING
LSE	DENOTES LIFT STATION EASEMENT	CHD	DENOTES CHORD DISTANCE
MCAE	DENOTES MARTIN COUNTY ACCESS EASEMENT	ORB	DENOTES OFFICIAL RECORDS BOOK
FM	DENOTES FOREMAN EASEMENT	TR	DENOTES TRACT LINE OF THE PLAT OF PALM CITY FARMS PLAT BOOK 6, PAGE 42.
LME	DENOTES LAKE MAINTENANCE EASEMENT		

□	DENOTES A SET PERMANENT REFERENCE MONUMENT 4"x4" CONCRETE MONUMENT WITH DISK (LB 7344)
●	DENOTES A 5/8" IRON ROD AND CAP (LB 7344)
⊙	DENOTES A SET PERMANENT CONTROL POINT CARRIAGE BOLT AND WASHER (LB 7344)
⊙	DENOTES A FOUND PERMANENT CONTROL POINT CARRIAGE BOLT AND WASHER

### SURVEYOR'S NOTES

1. THE BASE BEARING, AS SHOWN HEREON, IS N89°58'48"W ALONG THE SOUTHLINE OF THE SOUTHWEST ONE-QUARTER OF SECTION 15, TOWNSHIP 38 SOUTH, RANGE 40 EAST.
2. IN THOSE INSTANCES WHERE UTILITY OR DRAINAGE STRUCTURES ARE CONSTRUCTED IN CONFLICT WITH THE PLATTED PERMANENT CONTROL POINT POSITION STRADDLERS MONUMENTED AS PERMANENT CONTROL POINTS WILL BE SET TO REFERENCE THE PLATTED POSITION.
3. LINES THAT INTERSECT CURVES ARE RADIAL UNLESS OTHERWISE NOTED.
4. THIS INSTRUMENT WAS PREPARED BY WM. R. VAN CAMPEN, PROFESSIONAL SURVEYOR AND MAPPER NO. 2424, IN AND FOR THE OFFICES OF ASSOCIATED LAND SURVEYORS, INC., 4152 WEST BLUE HERON BOULEVARD, SUITE 121, RIVIERA BEACH, FLORIDA, 33404



**ASSOCIATED LAND SURVEYORS, INC.**  
 4152 W. BLUE HERON BOULEVARD-SUITE 121  
 RIVIERA BEACH, FLORIDA 33404 LB 7344  
 PHONE: (561) 848-2102 FAX: (561) 844-9859 EMAIL: ALLSURVEY@AOL.COM

FILE: P260PLAT	
FB:	WO.NO.: P260
SCALE: 1"=60'	DATE: 1/6/2005
DWN: KVC	SHEET 22 OF 36