

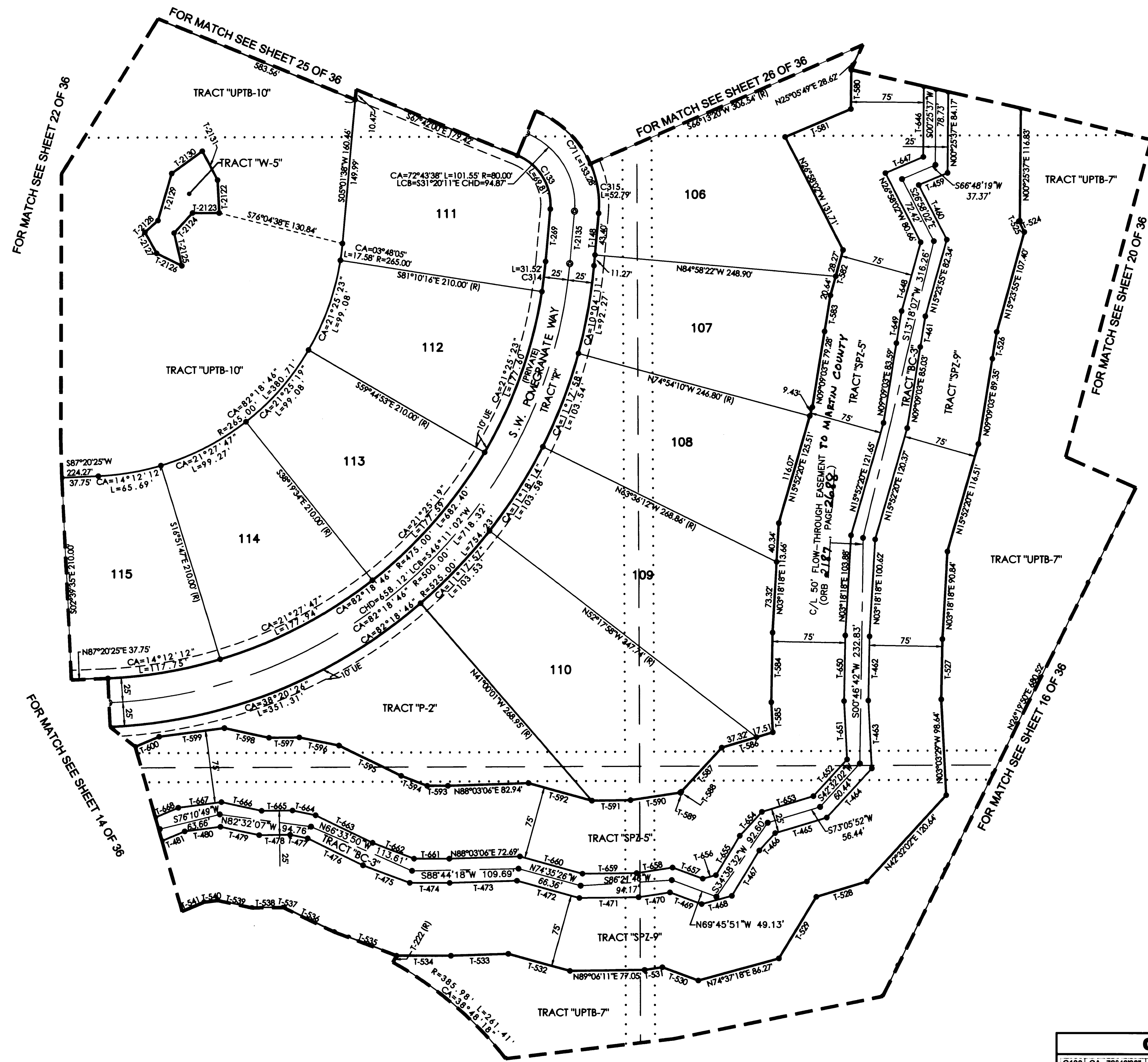
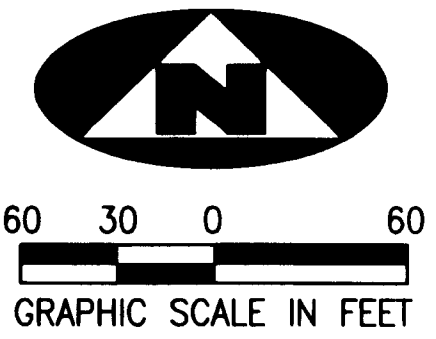
JULY 2006

# TUSCAWILLA PUD

BEING A REPLAT OF A PORTION OF SECTIONS 14 AND 15, TOWNSHIP 38 SOUTH, RANGE 40 EAST, PALM CITY FARMS, RECORDED IN PLAT BOOK 6, PAGE 42, PUBLIC RECORDS PALM BEACH COUNTY (NOW MARTIN COUNTY), FLORIDA, AND BEING A PART OF SECTIONS 10 AND 11, TOWNSHIP 38 SOUTH, RANGE 40 EAST, MARTIN COUNTY, FLORIDA

SHEET 21 OF 36

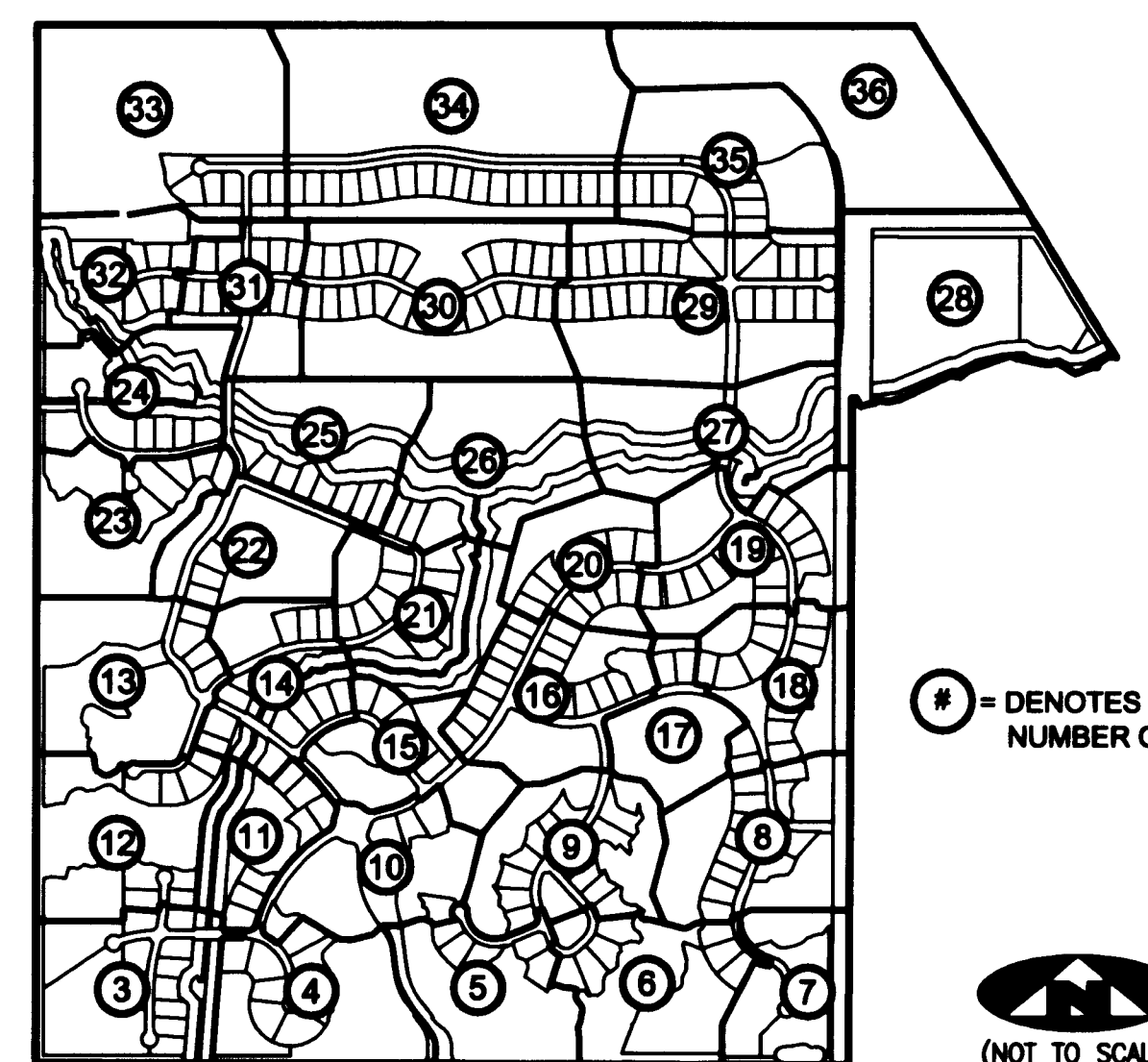
PLAT BK 16 Pg 59



### TANGENT TABLE

T-148 S05°01'38"W 54.67'	T-590 N81°13'54"E 51.67'
T-249 S05°01'38"W 54.67'	T-591 N89°06'11"E 39.94'
T-459 N44°48'19"E 32.20'	T-592 S74°35'26"E 67.57'
T-440 N26°58'02"W 63.65'	T-593 N89°53'20"E 21.43'
T-461 N09°17'16"E 32.22'	T-594 S69°22'23"E 28.79'
T-462 N00°58'46"E 66.11'	T-595 S64°16'17"E 71.23'
T-463 N03°03'29"W 69.76'	T-596 S78°33'08"E 41.78'
T-464 N42°32'02"E 68.62'	T-597 N89°14'51"E 31.31'
T-465 N73°05'52"E 55.50'	T-598 S77°56'31"E 46.79'
T-466 N42°40'08"E 24.25'	T-599 N82°27'37"E 67.94'
T-467 N31°05'24"E 54.65'	T-600 N67°01'27"E 26.75'
T-468 N74°37'18"E 32.24'	T-601 N00°25'37"E 73.28'
T-469 S69°45'51"E 34.80'	T-602 N66°48'19"E 42.55'
T-470 N81°13'54"E 32.69'	T-603 N15°23'55"E 73.98'
T-471 N89°06'11"E 61.14'	T-604 N09°17'16"E 33.58'
T-472 S74°35'26"E 66.63'	T-605 N00°58'46"E 67.49'
T-473 N88°03'06"E 69.27'	T-606 N03°03'29"W 60.13'
T-474 N89°53'20"E 41.33'	T-607 N42°32'02"E 51.29'
T-475 S69°22'23"E 51.55'	T-608 N73°05'52"E 55.47'
T-476 S64°16'17"E 63.16'	T-609 N42°40'08"E 33.58'
T-477 S78°33'08"E 18.57'	T-610 N31°05'24"E 47.20'
T-478 N89°14'51"E 31.85'	T-611 N74°37'18"E 14.22'
T-479 S77°56'31"E 40.74'	T-612 S69°45'51"E 33.24'
T-480 N82°27'37"E 37.12'	T-613 N81°13'54"E 37.43'
T-481 N67°01'27"E 25.52'	T-614 N89°06'11"E 55.84'
T-524 N66°48'19"E 1.15'	T-615 S74°35'26"E 66.86'
T-525 N26°58'02"W 12.60'	T-616 N89°53'20"E 36.36'
T-526 N09°17'16"E 28.12'	T-617 S69°22'23"E 45.86'
T-527 N00°58'46"E 61.94'	T-618 S64°16'17"E 65.18'
T-528 N73°05'52"E 54.47'	T-619 S78°33'08"E 24.37'
T-529 N31°05'24"E 74.15'	T-620 N89°14'51"E 31.72'
T-530 S69°45'51"E 39.49'	T-621 S77°56'31"E 44.83'
T-531 N81°13'54"E 18.45'	T-622 N82°27'37"E 44.83'
T-532 S74°35'26"E 65.93'	T-623 N67°01'27"E 25.82'
T-533 N88°03'06"E 59.03'	T-624 N03°03'29"W 34.27'
T-534 N89°53'20"E 56.26'	T-625 S89°48'27"E 27.52'
T-535 S69°22'23"E 68.61'	T-626 N42°32'02"E 28.14'
T-536 S64°16'17"E 57.11'	T-627 S74°35'26"E 34.95'
T-537 S78°33'08"E 1.15'	T-628 S42°40'08"E 29.01'
T-538 N89°14'51"E 32.26'	T-629 S77°56'31"E 34.21'
T-539 S77°56'31"E 34.21'	T-630 N82°27'37"E 14.00'
T-540 N82°27'37"E 14.00'	T-631 N67°01'27"E 24.59'
T-541 N67°01'27"E 24.59'	T-632 N00°25'37"E 40.42'
T-580 N00°25'37"E 40.42'	T-633 N66°48'19"E 73.59'
T-581 N66°48'19"E 73.59'	T-634 N15°23'55"E 48.92'
T-582 N15°23'55"E 48.92'	T-635 N09°17'16"E 37.47'
T-583 N09°17'16"E 37.47'	T-636 N00°58'46"E 71.66'
T-584 N00°58'46"E 71.66'	T-637 N03°03'29"W 30.88'
T-585 N03°03'29"W 30.88'	T-638 N73°05'52"E 54.84'
T-586 N73°05'52"E 54.84'	T-639 N42°40'08"E 61.58'
T-587 N42°40'08"E 61.58'	T-640 N31°05'24"E 1.25'
T-588 N31°05'24"E 1.25'	T-589 S69°45'51"E 0.62'

### SHEET INDEX



# = DENOTES SHEET NUMBER OF 36

### CURVE TABLE

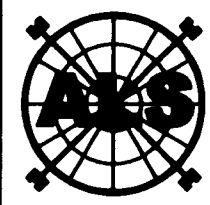
C133	CA=72°43'38"	R=55.00'	L=69.81'	LCB=N31°20'11"W	CHD=65.22'
C314	CA=03°48'06"	R=475.00'	L=31.52'	LCB=N06°58'41"E	CHD=31.51'
C315	CA=28°48'18"	R=105.00'	L=52.79'	LCB=N09°22'31"W	CHD=52.23'

### LEGEND

- (R) DENOTES A RADIAL LINE
- C/L DENOTES A CENTERLINE
- DE DENOTES A PRIVATE DRAINAGE EASEMENT
- UE DENOTES UTILITY EASEMENT
- LSE DENOTES LIFT STATION EASEMENT
- MCAE DENOTES MARTIN COUNTY ACCESS EASEMENT
- FM DENOTES FORCEMAIN EASEMENT
- LME DENOTES LAKE MAINTENANCE EASEMENT
- R DENOTES RADIUS DISTANCE
- L DENOTES ARC LENGTH DISTANCE
- CA DENOTES CENTRAL ANGLE
- LCB DENOTES LONG CHORD BEARING
- CHD DENOTES CHORD DISTANCE
- ORB DENOTES OFFICIAL RECORDS BOOK
- ..... DENOTES TRACT LINE OF THE PLAT OF PALM CITY FARMS PLAT BOOK 6, PAGE 42.
- DENOTES A SET PERMANENT REFERENCE MONUMENT 4"x4" CONCRETE MONUMENT WITH DISK (LB 7344)
- DENOTES A 5/8" IRON ROD AND CAP (LB 7344)
- ⊙ DENOTES A SET PERMANENT CONTROL POINT CARRIAGE BOLT AND WASHER (LB 7344)
- ⊙ DENOTES A FOUND PERMANENT CONTROL POINT CARRIAGE BOLT AND WASHER

### SURVEYOR'S NOTES

- THE BASE BEARING, AS SHOWN HEREON, IS N89°58'48"W ALONG THE SOUTHWEST CORNER OF THE SOUTHWEST ONE-QUARTER OF SECTION 15, TOWNSHIP 38 SOUTH, RANGE 40 EAST.
- IN THOSE INSTANCES WHERE UTILITY OR DRAINAGE STRUCTURES ARE CONSTRUCTED IN CONFLICT WITH THE PLATTED PERMANENT CONTROL POINT POSITION STRADDLERS MONUMENTED AS PERMANENT CONTROL POINTS WILL BE SET TO REFERENCE THE PLATTED POSITION.
- ALL LINES THAT INTERSECT CURVES ARE RADIAL UNLESS OTHERWISE NOTED.
- THIS INSTRUMENT WAS PREPARED BY WM. R. VAN CAMPEN, PROFESSIONAL SURVEYOR AND MAPPER NO. 2424, IN AND FOR THE OFFICES OF ASSOCIATED LAND SURVEYORS, INC., 4152 WEST BLUE HERON BOULEVARD, SUITE 121, RIVIERA BEACH, FLORIDA, 33404



**ASSOCIATED LAND SURVEYORS, INC.**  
 4152 W. BLUE HERON BOULEVARD-SUITE 121  
 RIVIERA BEACH FLORIDA 33404 LB 7344  
 PHONE: (561) 848-2102 FAX: (561) 844-9659 EMAIL: ALLSURVEY@AOL.COM

FILE: P280PLAT	
FB:	WO.NO.: P280
SCALE: 1"=80'	DATE: 1/6/2005
DWN: KVC	SHEET 21 OF 36