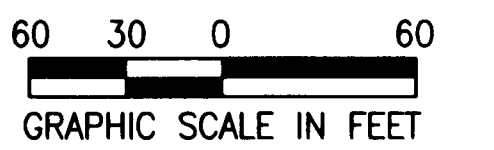


BEING A REPLAT OF A PORTION OF SECTIONS 14 AND 15, TOWNSHIP 38 SOUTH, RANGE 40 EAST, PALM CITY FARMS, RECORDED IN PLAT BOOK 6, PAGE 42, PUBLIC RECORDS PALM BEACH COUNTY (NOW MARTIN COUNTY), FLORIDA, AND BEING A PART OF SECTIONS 10 AND 11, TOWNSHIP 38 SOUTH, RANGE 40 EAST, MARTIN COUNTY, FLORIDA

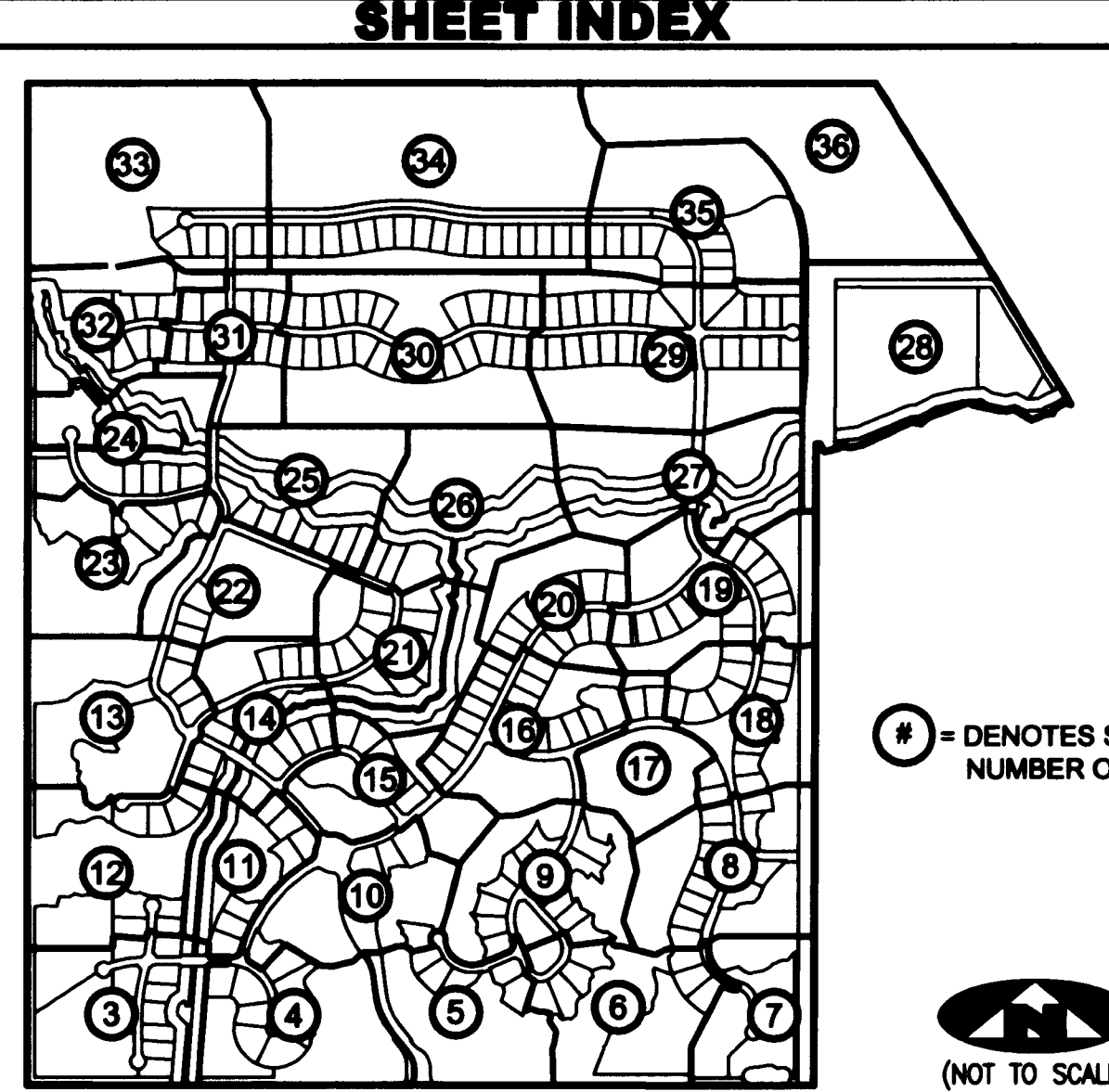
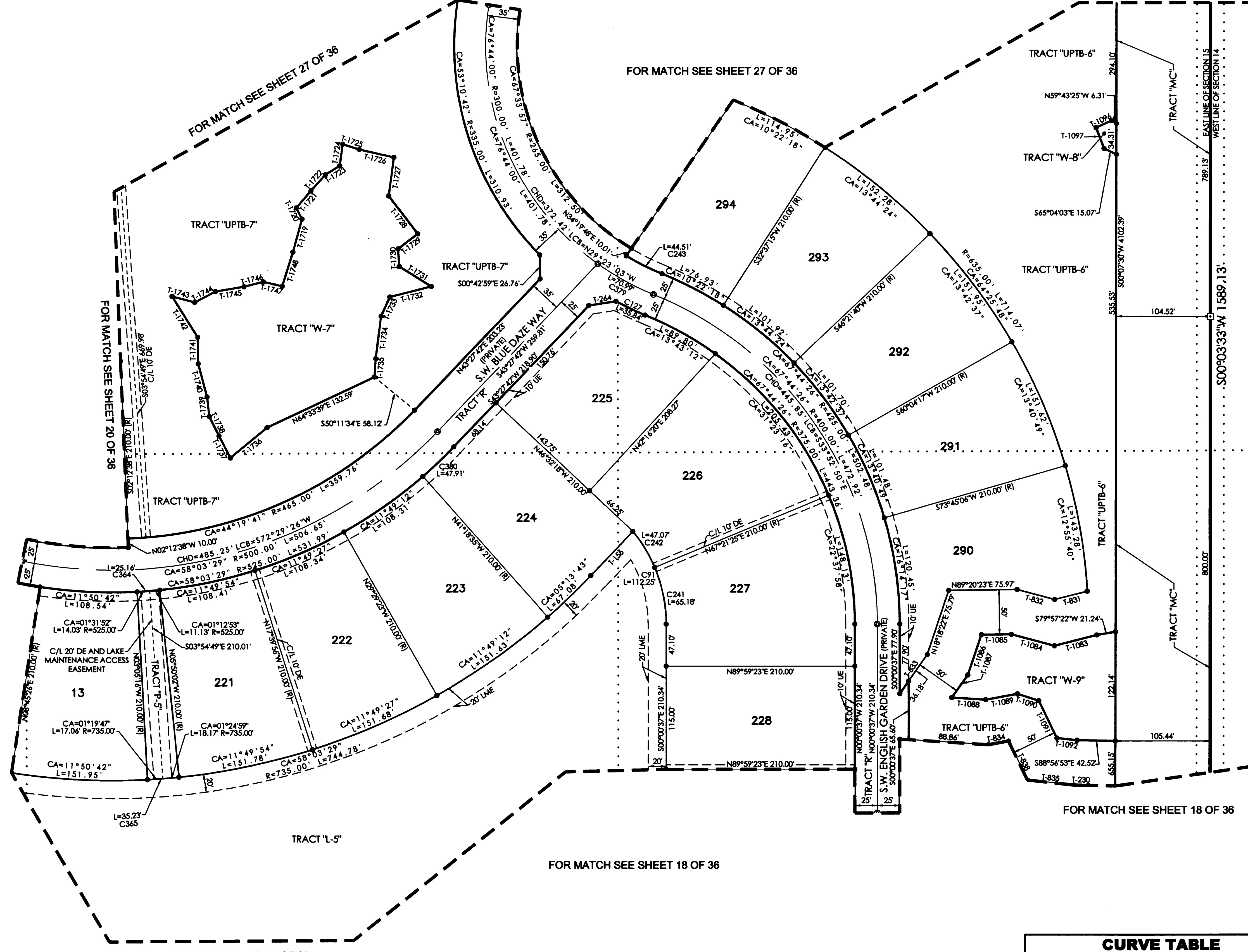
FOR MATCH SEE SHEET 27 OF 36

PLAT BK 16 P 39



TANGENT TABLE

Table listing tangent measurements for various tracts, including bearings and distances such as T-156 N43°27'42"E 68.14'.



= DENOTES SHEET NUMBER OF 36



(NOT TO SCALE)

CURVE TABLE with columns for curve ID, CA, CB, R, L, LCB, LCB, CHD, and CHD.

LEGEND defining symbols for radial lines, centerlines, easements, and monuments.

SURVEYOR'S NOTES providing technical details and instructions for monumentation and curve data.



ASSOCIATED LAND SURVEYORS, INC. 4152 W. BLUE HERON BOULEVARD-SUITE 121 RIVIERA BEACH FLORIDA 33404 LB 7344

FILE: P280PLAT with fields for FB, WO.NO., SCALE, DATE, and SHEET.