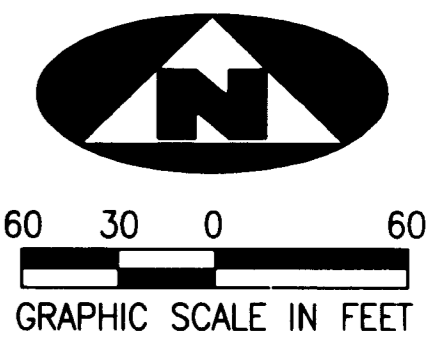


TUSCAWILLA PUD

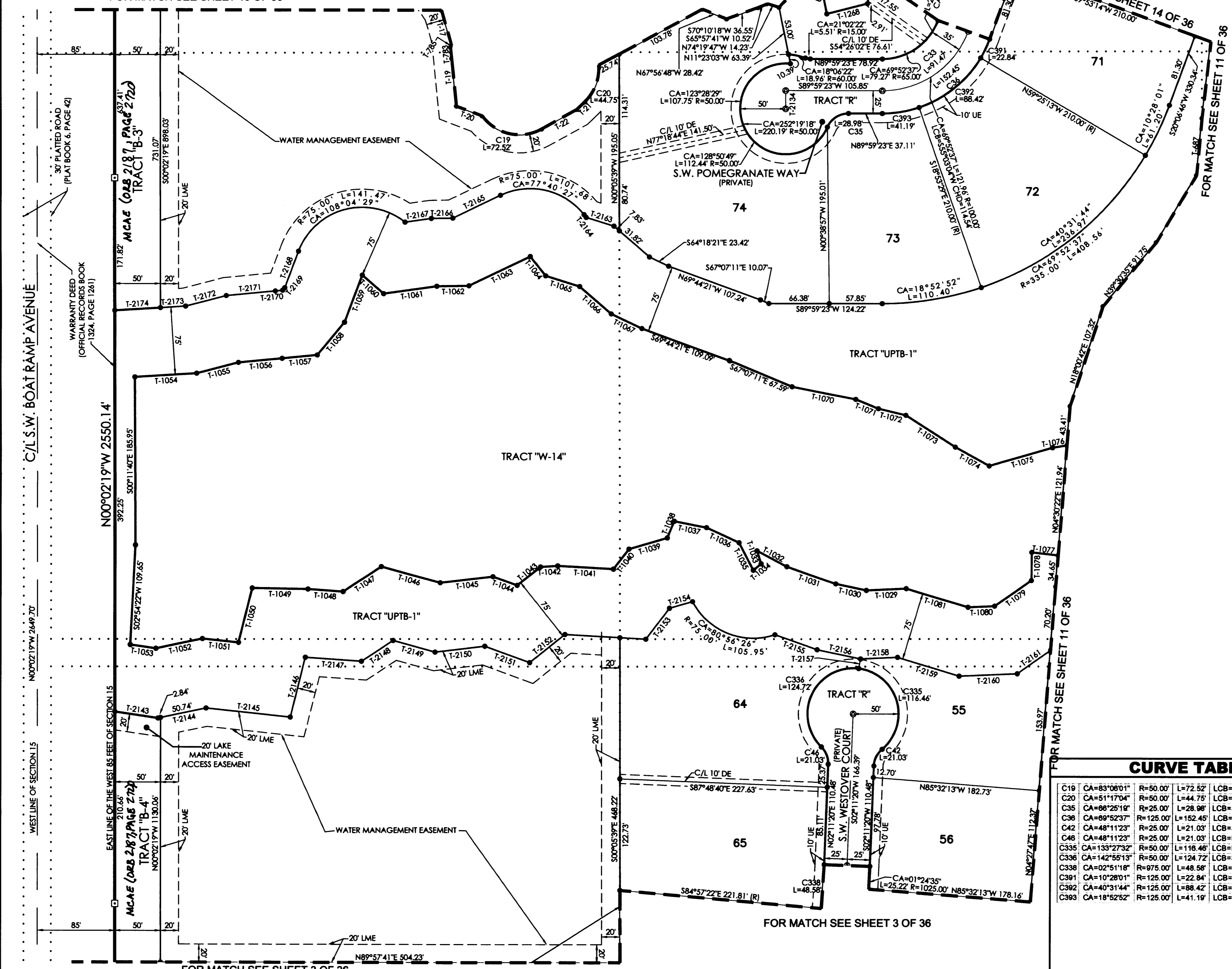
BEING A REPLAT OF A PORTION OF SECTIONS 14 AND 15, TOWNSHIP 38 SOUTH, RANGE 40 EAST, PALM CITY FARMS, RECORDED IN PLAT BOOK 6, PAGE 42, PUBLIC RECORDS PALM BEACH COUNTY (NOW MARTIN COUNTY), FLORIDA, AND BEING A PART OF SECTIONS 10 AND 11, TOWNSHIP 38 SOUTH, RANGE 40 EAST, MARTIN COUNTY, FLORIDA



FOR MATCH SEE SHEET 13 OF 36

FOR MATCH SEE SHEET 14 OF 36

FOR MATCH SEE SHEET 13 OF 36



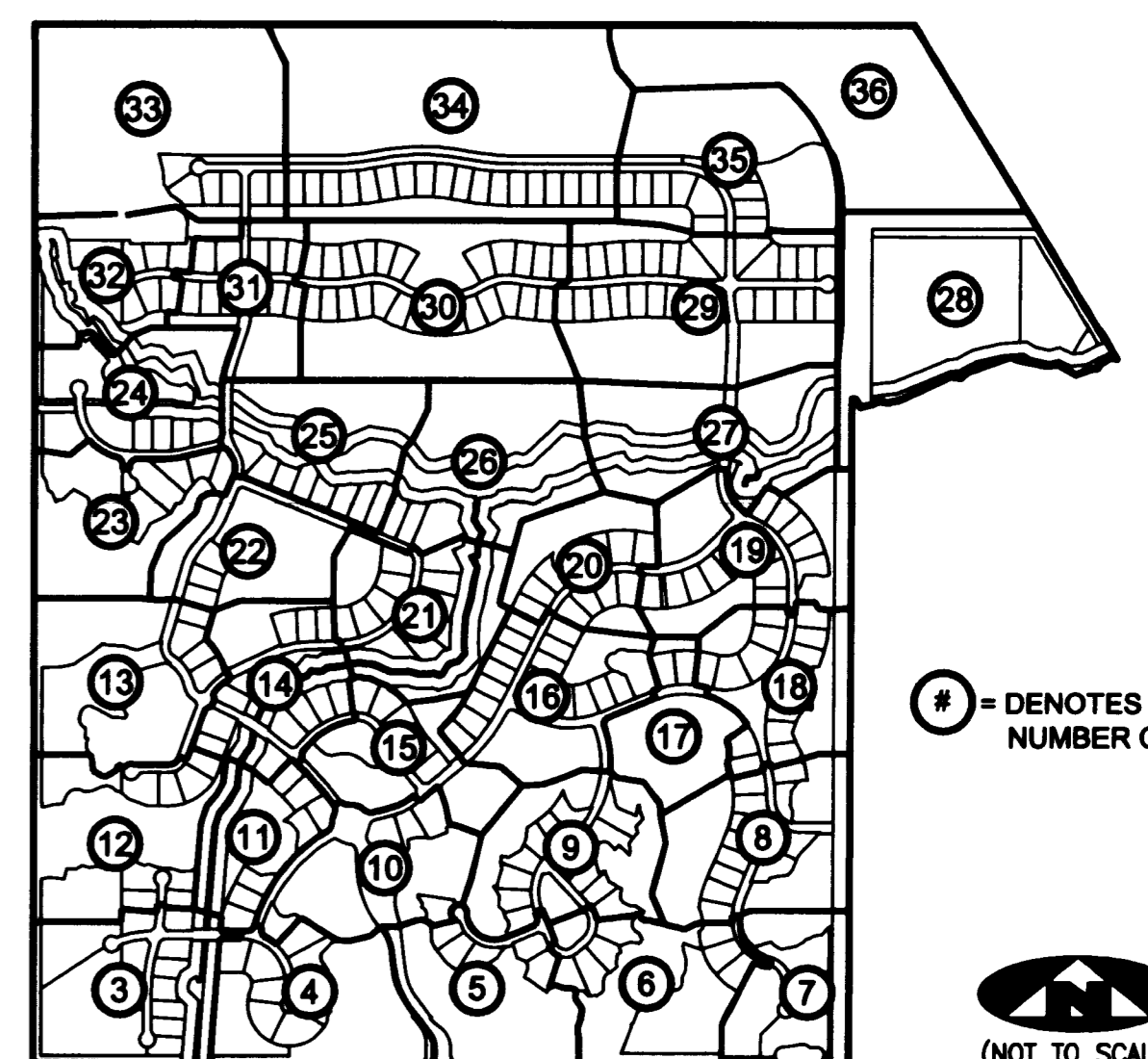
TANGENT TABLE

Table listing tangent points T-1 through T-1071 with their respective bearings and distances.

CURVE TABLE

Table listing curve data for various points (C19, C20, C35, etc.) including CA, R, L, LCB, and CHD values.

SHEET INDEX



LEGEND

- Legend items: (R) DENOTES A RADIAL LINE, C/L DENOTES A CENTERLINE, DE DENOTES A PRIVATE DRAINAGE EASEMENT, etc.

SURVEYOR'S NOTES

- Surveyor's notes: 1. THE BASE BEARING, AS SHOWN HEREON, IS N89°58'48"W ALONG THE SOUTHWEST LINE... 2. IN THOSE INSTANCES WHERE UTILITY OR DRAINAGE STRUCTURES ARE CONSTRUCTED IN CONFLICT WITH THE PLATTED PERMANENT CONTROL POINT POSITION STRADDLERS MONUMENTED AS PERMANENT CONTROL POINTS WILL BE SET TO REFERENCE THE PLATTED POSITION.



ASSOCIATED LAND SURVEYORS, INC. 4152 W. BLUE HERON BOULEVARD-SUITE 121 RIVIERA BEACH FLORIDA 33404 LB 7344

Table with fields: FILE: P260PLAT, FB: WO.NO.: P260, SCALE: 1"=60', DATE: 1/8/2005, DWN: KVC, SHEET 12 OF 36