

JULY 2006

CURVE TABLE

Table with columns for Curve ID, CA, R, L, LCB, CHD values for various curves.

TUSCAWILLA PUD

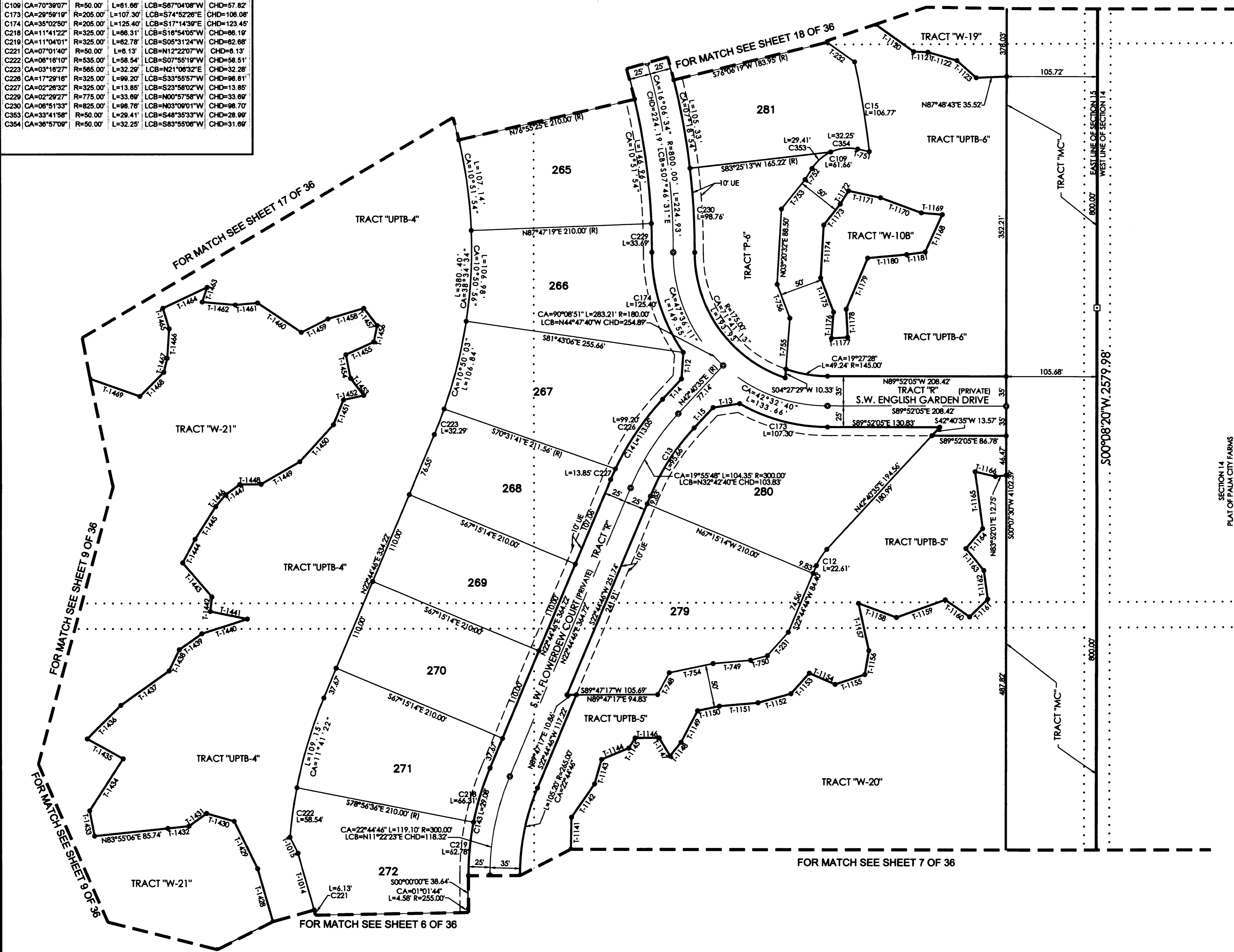
BEING A REPLAT OF A PORTION OF SECTIONS 14 AND 15, TOWNSHIP 38 SOUTH, RANGE 40 EAST, PALM CITY FARMS, RECORDED IN PLAT BOOK 6, PAGE 42, PUBLIC RECORDS PALM BEACH COUNTY (NOW MARTIN COUNTY), FLORIDA, AND BEING A PART OF SECTIONS 10 AND 11, TOWNSHIP 38 SOUTH, RANGE 40 EAST, MARTIN COUNTY, FLORIDA

SHEET 8 OF 36

Plat Book 16 pg 39



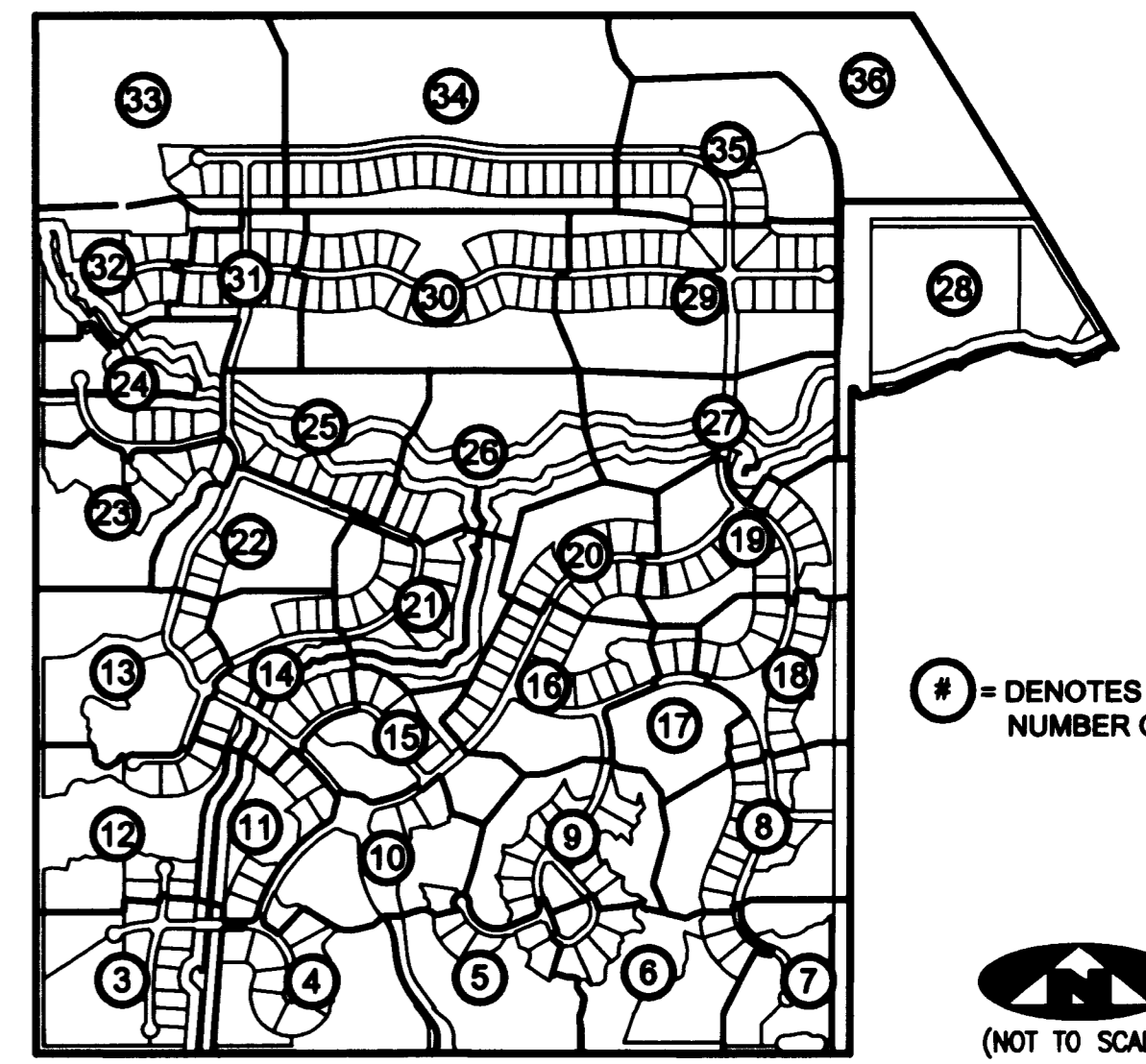
60 30 0 60 GRAPHIC SCALE IN FEET



TANGENT TABLE

Table listing tangent line bearings and distances for various tracts.

SHEET INDEX



# = DENOTES SHEET NUMBER OF 36



(NOT TO SCALE)

LEGEND

Legend table defining symbols for radial lines, centerlines, easements, monuments, and control points.

SURVEYOR'S NOTES

- 1. THE BASE BEARING, AS SHOWN HEREON, IS N89°58'48"W ALONG THE SOUTHLINE OF THE SOUTHWEST ONE-QUARTER OF SECTION 15, TOWNSHIP 38 SOUTH, RANGE 40 EAST.
2. IN THOSE INSTANCES WHERE UTILITY OR DRAINAGE STRUCTURES ARE CONSTRUCTED IN CONFLICT WITH THE PLATTED PERMANENT CONTROL POINT POSITION STRADDLERS MONUMENTED AS PERMANENT CONTROL POINTS WILL BE SET TO REFERENCE THE PLATTED POSITION.
3. LINES THAT INTERSECT CURVES ARE RADIAL UNLESS OTHERWISE NOTED.
4. THIS INSTRUMENT WAS PREPARED BY WM. R. VAN CAMPEN, PROFESSIONAL SURVEYOR AND MAPPER NO. 2424, IN AND FOR THE OFFICES OF ASSOCIATED LAND SURVEYORS, INC., 4152 WEST BLUE HERON BOULEVARD, SUITE 121, RIVIERA BEACH, FLORIDA, 33404



ASSOCIATED LAND SURVEYORS, INC. 4152 W. BLUE HERON BOULEVARD-SUITE 121 RIVIERA BEACH FLORIDA 33404 LB 7344 PHONE: (561) 848-2102 FAX: (561) 844-9659 EMAIL: ALSURVEY@AOL.COM

FILE: P260PLAT

Table with columns for FB, WO.NO., SCALE, DATE, DWN, SHEET.