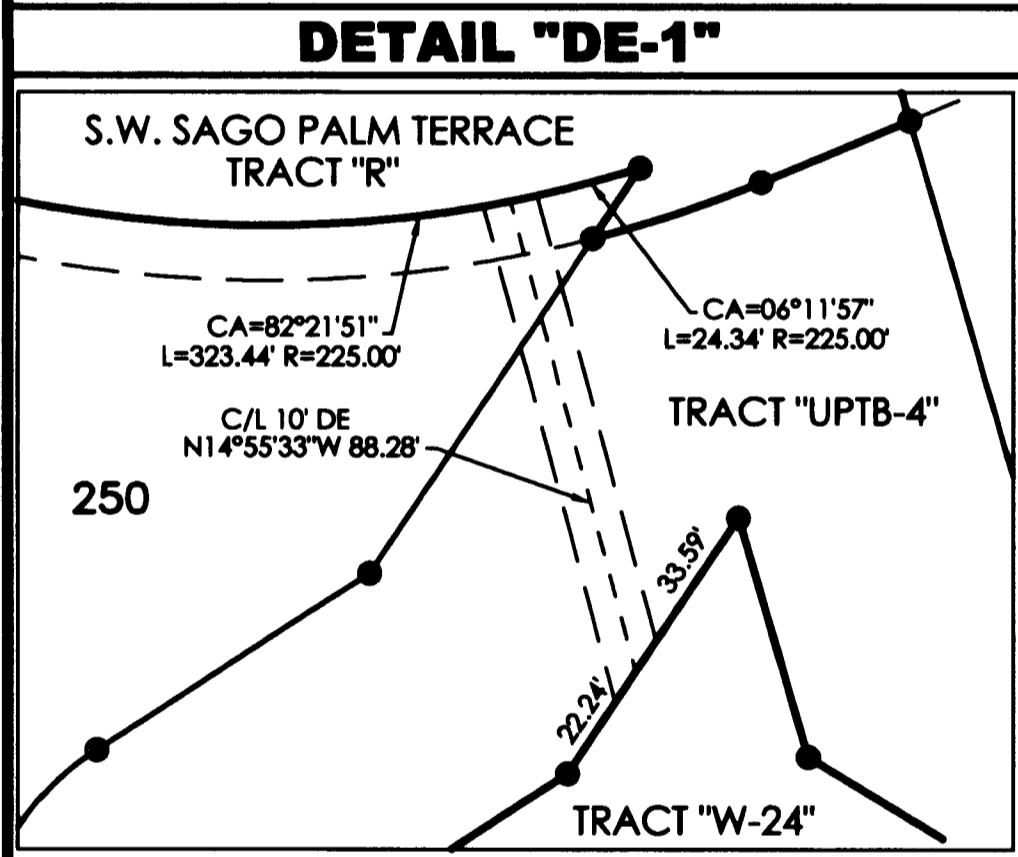
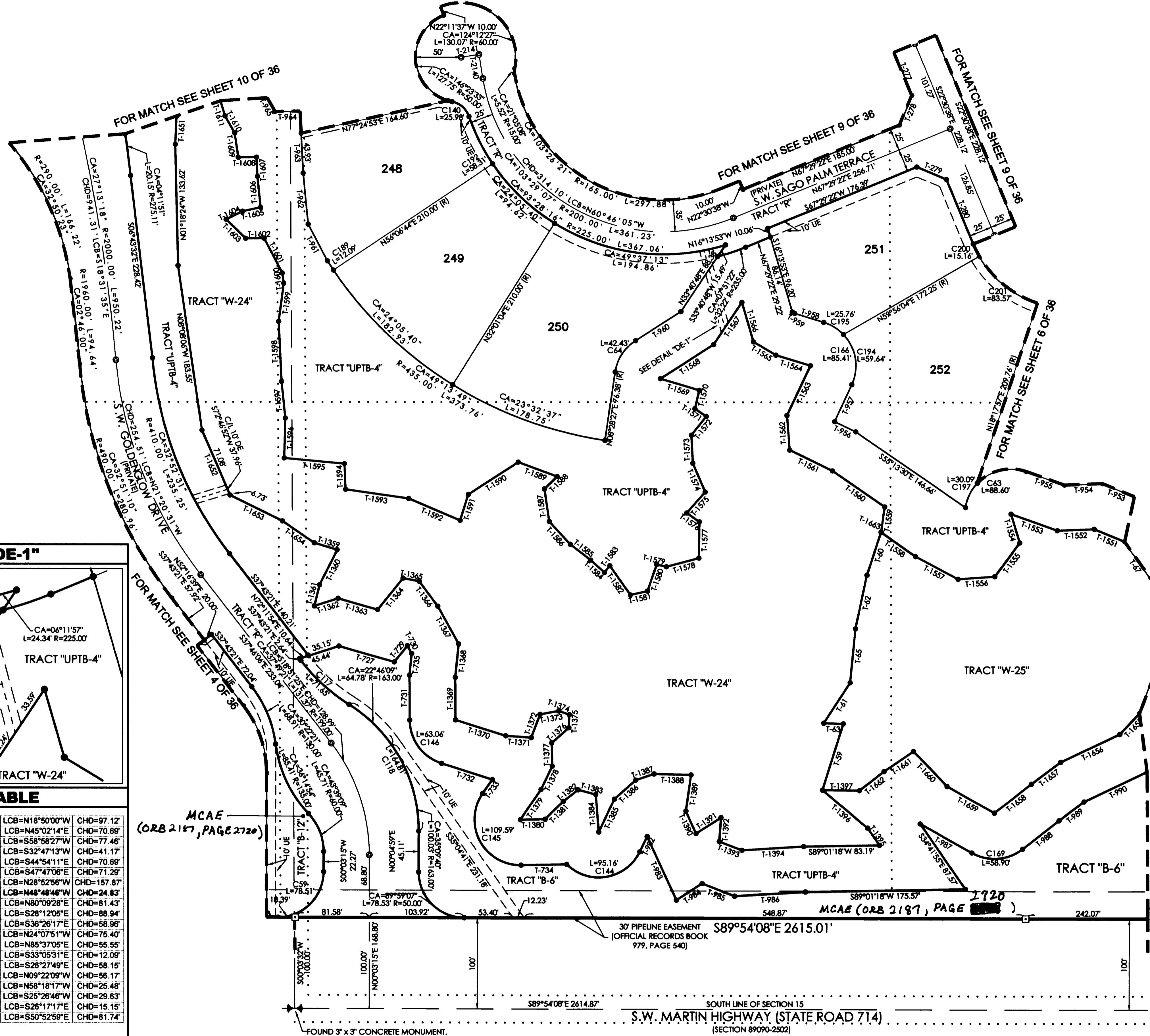




60 30 0 60
GRAPHIC SCALE IN FEET

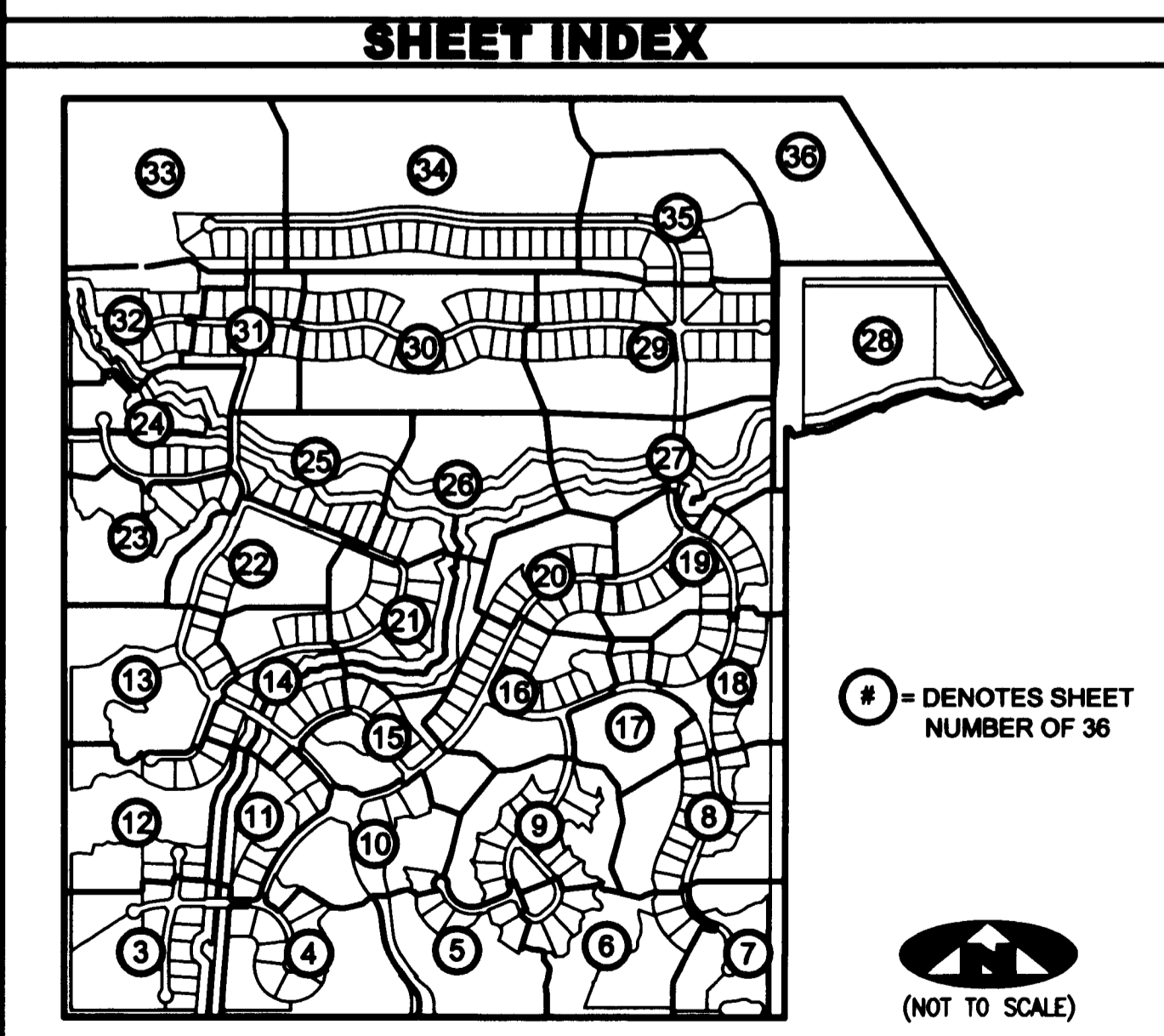


CURVE TABLE

Curve ID	CA	R	L	LCB	CHD
C58	37°46'41"	150.00'	78.51'	N18°50'00"W	97.12'
C59	89°57'57"	50.00'	88.60'	N45°02'14"E	70.69'
C63	101°31'52"	50.00'	42.43'	S58°58'27"W	77.46'
C64	48°37'33"	50.00'	78.52'	S32°47'13"W	41.17'
C116	89°58'20"	50.00'	78.52'	S44°54'11"E	70.69'
C117	20°07'30"	204.00'	71.65'	N28°47'06"E	71.29'
C118	57°55'50"	163.00'	164.81'	N28°52'56"W	157.87'
C140	50°32'47"	25.00'	25.98'	N48°48'46"W	24.83'
C144	109°02'42"	50.00'	95.16'	N80°09'28"E	81.43'
C145	125°35'11"	50.00'	109.59'	S28°12'05"E	88.94'
C146	72°15'43"	50.00'	63.06'	S36°26'17"E	58.96'
C166	97°52'15"	50.00'	85.41'	N24°07'51"W	75.40'
C169	67°29'33"	50.00'	58.90'	N85°37'05"E	55.55'
C189	01°35'31"	435.00'	12.09'	S33°05'31"E	12.09'
C192	14°50'54"	225.00'	58.31'	S26°27'49"E	58.15'
C194	68°20'51"	50.00'	59.64'	N09°22'09"W	56.17'
C195	29°31'24"	50.00'	25.76'	N58°18'17"W	25.48'
C197	34°28'31"	50.00'	30.09'	S25°26'46"W	29.63'
C200	07°33'17"	115.00'	15.16'	S26°17'17"E	15.15'
C201	41°38'08"	115.00'	83.57'	S50°52'59"E	81.74'

TANGENT TABLE

Curve ID	Bearing	Distance	Curve ID	Bearing	Distance	Curve ID	Bearing	Distance
T-58	N00°03'15"E	49.17'	T-1376	N48°32'38"E	25.00'	T-1591	N17°42'22"E	30.02'
T-59	S17°33'11"W	75.94'	T-1377	N01°23'36"W	25.48'	T-1592	S66°45'28"E	61.16'
T-60	S18°21'08"W	49.84'	T-1378	N25°44'34"E	28.13'	T-1593	S81°42'20"E	69.68'
T-61	S33°06'56"W	53.03'	T-1379	N34°35'30"E	39.84'	T-1594	S02°35'23"E	28.39'
T-62	S12°04'50"W	60.20'	T-1380	S89°00'20"W	27.12'	T-1595	S84°29'17"E	66.20'
T-63	S88°07'40"E	21.63'	T-1381	S45°37'13"W	27.73'	T-1596	S01°30'05"W	44.17'
T-64	S05°34'40"W	59.15'	T-1382	S52°13'34"W	20.42'	T-1597	S05°51'36"E	40.57'
T-65	S34°42'56"E	57.93'	T-1383	N75°15'31"W	20.12'	T-1598	S02°39'20"E	66.44'
T-66	S34°02'14"E	25.51'	T-1384	N04°32'05"W	40.96'	T-1599	S07°37'57"W	42.35'
T-67	S00°04'59"W	45.15'	T-1385	S25°38'07"W	39.75'	T-1600	S08°15'15"E	11.41'
T-68	N22°30'38"W	51.27'	T-1386	S48°13'35"W	31.12'	T-1601	S27°23'14"E	43.01'
T-69	N22°29'22"E	35.36'	T-1387	S71°41'36"W	21.25'	T-1602	N89°50'27"E	20.08'
T-70	N67°30'38"W	35.36'	T-1388	N88°32'00"W	40.46'	T-1603	S45°46'01"E	29.87'
T-71	N22°30'38"W	76.85'	T-1389	N08°09'13"E	39.83'	T-1604	S63°24'04"W	19.97'
T-72	N74°00'14"W	63.06'	T-1390	N24°34'52"W	26.86'	T-1605	S77°26'49"W	20.27'
T-73	S72°11'54"W	45.44'	T-1391	S57°26'56"W	32.49'	T-1606	S05°35'58"E	34.21'
T-74	S38°47'22"W	22.84'	T-1392	N04°12'30"E	26.21'	T-1607	S02°51'36"E	21.25'
T-75	N28°56'51"W	9.71'	T-1393	N68°38'23"W	26.62'	T-1608	N89°16'57"E	19.99'
T-76	N00°18'26"W	49.27'	T-1394	S66°30'07"W	67.52'	T-1609	S08°19'36"E	26.98'
T-77	N72°34'08"W	58.11'	T-1395	S34°41'55"E	23.10'	T-1610	S29°24'31"E	21.72'
T-78	N34°35'30"E	18.48'	T-1396	S50°09'17"E	64.29'	T-1611	S16°58'14"E	17.37'
T-79	S89°00'20"W	49.76'	T-1397	N89°17'09"W	40.56'	T-1612	N02°21'23"E	30.88'
T-80	N05°51'38"E	23.80'	T-1398	S67°37'49"E	36.01'	T-1613	N23°06'38"W	77.81'
T-81	S67°37'49"E	38.04'	T-1399	N87°52'20"E	40.42'	T-1614	N63°31'01"W	64.03'
T-82	N87°52'20"E	41.61'	T-1400	S70°15'37"E	53.89'	T-1615	N55°30'15"W	42.30'
T-83	S70°15'37"E	44.23'	T-1401	N16°57'49"W	33.06'	T-1616	N45°14'23"E	71.40'
T-84	S63°51'31"E	25.76'	T-1402	N85°54'59"E	40.06'	T-1617	N64°42'36"E	71.40'
T-85	S24°48'16"W	44.91'	T-1403	S73°03'59"E	33.11'	T-1618	N53°25'14"E	40.01'
T-86	S73°03'59"E	33.11'	T-1404	S54°41'42"E	45.99'	T-1619	N51°52'19"E	51.17'
T-87	S58°54'04"E	2.85'	T-1405	S08°11'42"W	28.06'	T-1620	S44°09'00"E	53.10'
T-88	S57°06'00"E	59.05'	T-1406	S57°23'14"E	45.58'	T-1621	N55°43'01"E	39.00'
T-89	S27°23'14"E	45.58'	T-1407	S65°35'58"E	56.51'	T-1622	N52°23'49"E	33.95'
T-90	S05°35'58"E	56.51'	T-1408	S02°51'36"E	68.22'	T-1623	N64°06'25"W	20.24'
T-91	N89°16'57"E	27.44'	T-1409	S25°38'07"W	18.50'	T-1624	N09°01'31"W	26.81'
T-92	S25°38'07"W	18.50'	T-1410	S73°03'59"E	39.32'	T-1625	N80°58'29"E	20.00'
T-93	N24°34'52"W	76.71'	T-1411	S58°54'04"E	28.59'			
T-94	S67°26'56"W	33.56'	T-1412	S16°51'33"E	45.23'			
T-95	N68°38'23"W	38.20'	T-1413	N33°40'48"E	55.83'			
T-96	S86°30'07"W	77.44'	T-1414	N57°06'00"E	69.42'			
T-97	N60°38'08"W	65.23'	T-1415	N73°20'03"W	44.40'			
T-98	S51°52'19"W	50.49'	T-1416	N13°16'25"E	20.85'			
T-99	S53°25'14"W	34.40'	T-1417	N55°35'42"W	15.10'			
T-100	S64°42'36"W	76.13'	T-1418	N39°03'24"E	31.13'			
T-101	N72°46'35"W	26.18'	T-1419	N23°05'57"W	34.54'			
T-102	N62°43'24"E	42.96'	T-1420	N15°19'49"E	30.82'			
T-103	N13°57'34"E	23.94'	T-1421	N54°59'01"W	17.08'			
T-104	S72°11'54"W	27.40'	T-1422	N57°02'35"E	36.84'			
T-105	N74°00'14"W	45.02'	T-1423	N00°58'10"E	39.73'			
T-106	S38°47'22"W	44.31'	T-1424	N75°02'35"E	36.84'			
T-107	N79°05'03"W	18.01'	T-1425	S77°27'06"E	10.86'			
T-108	N36°34'10"W	34.02'	T-1426	N19°24'28"E	30.78'			
T-109	N28°56'51"W	47.12'	T-1427	N77°09'33"E	19.23'			
T-110	N05°51'38"E	36.78'	T-1428	S34°56'45"E	39.03'			
T-111	N00°18'26"W	46.57'	T-1429	N38°06'31"E	5.53'			
T-112	N72°34'08"W	57.70'	T-1430	S48°02'20"E	20.54'			
T-113	N85°43'12"W	28.09'	T-1431	S52°05'19"E	28.20'			
T-114	S20°21'08"W	27.21'	T-1432	S42°28'43"E	33.82'			
T-115	S79°30'14"W	20.76'	T-1433	S08°21'25"E	36.39'			
T-116	N70°24'59"W	12.26'	T-1434	S45°30'38"W	19.51'			
T-117	N01°39'53"E	14.37'	T-1435	S69°23'45"E	45.25'			
T-118			T-1436	N56°45'37"E	65.39'			



LEGEND

(R)	DENOTES A RADIAL LINE	R	DENOTES RADIUS DISTANCE
C/L	DENOTES A CENTERLINE	L	DENOTES ARC LENGTH DISTANCE
DE	DENOTES A PRIVATE DRAINAGE EASEMENT	CA	DENOTES CENTRAL ANGLE
UE	DENOTES UTILITY EASEMENT	LCB	DENOTES LONG CHORD BEARING
LSE	DENOTES LIFT STATION EASEMENT	CHD	DENOTES CHORD DISTANCE
MCAE	DENOTES MARTIN COUNTY ACCESS EASEMENT	ORB	DENOTES OFFICIAL RECORDS BOOK
FM	DENOTES FORCE MAIN EASEMENT	PL	DENOTES TRACT LINE OF THE PLAT OF PALM CITY FARMS PLAT BOOK 6, PAGE 42.
LME	DENOTES LAKE MAINTENANCE EASEMENT		

SURVEYOR'S NOTES

- THE BASE BEARING, AS SHOWN HEREON, IS N89°58'48"W ALONG THE SOUTHWEST CORNER QUARTER OF SECTION 15, TOWNSHIP 38 SOUTH, RANGE 40 EAST.
- IN THOSE INSTANCES WHERE UTILITY OR DRAINAGE STRUCTURES ARE CONSTRUCTED IN CONFLICT WITH THE PLATTED PERMANENT CONTROL POINT POSITION STRADDLERS MONUMENTED AS PERMANENT CONTROL POINTS WILL BE SET TO REFERENCE THE PLATTED POSITION.
- POINTS THAT INTERSECT CURVES ARE RADIAL UNLESS OTHERWISE NOTED.
- THIS INSTRUMENT WAS PREPARED BY WM. R. VAN CAMPEN, PROFESSIONAL SURVEYOR AND MAPPER NO. 2424, IN AND FOR THE OFFICES OF ASSOCIATED LAND SURVEYORS, INC., 4152 WEST BLUE HERON BOULEVARD, SUITE 121, RIVIERA BEACH, FLORIDA, 33404

ASSOCIATED LAND SURVEYORS, INC.
 4152 W. BLUE HERON BOULEVARD - SUITE 121
 RIVIERA BEACH, FLORIDA 33404, LB 7344
 PHONE: (561) 848-2102 FAX: (561) 844-9659 EMAIL: ALLSURVEY@AOL.COM

FILE: P280PLAT

FB:	WO.NO.: P280
SCALE: 1"=60'	DATE: 1/6/2005
DWN: KVC	SHEET 5 OF 36