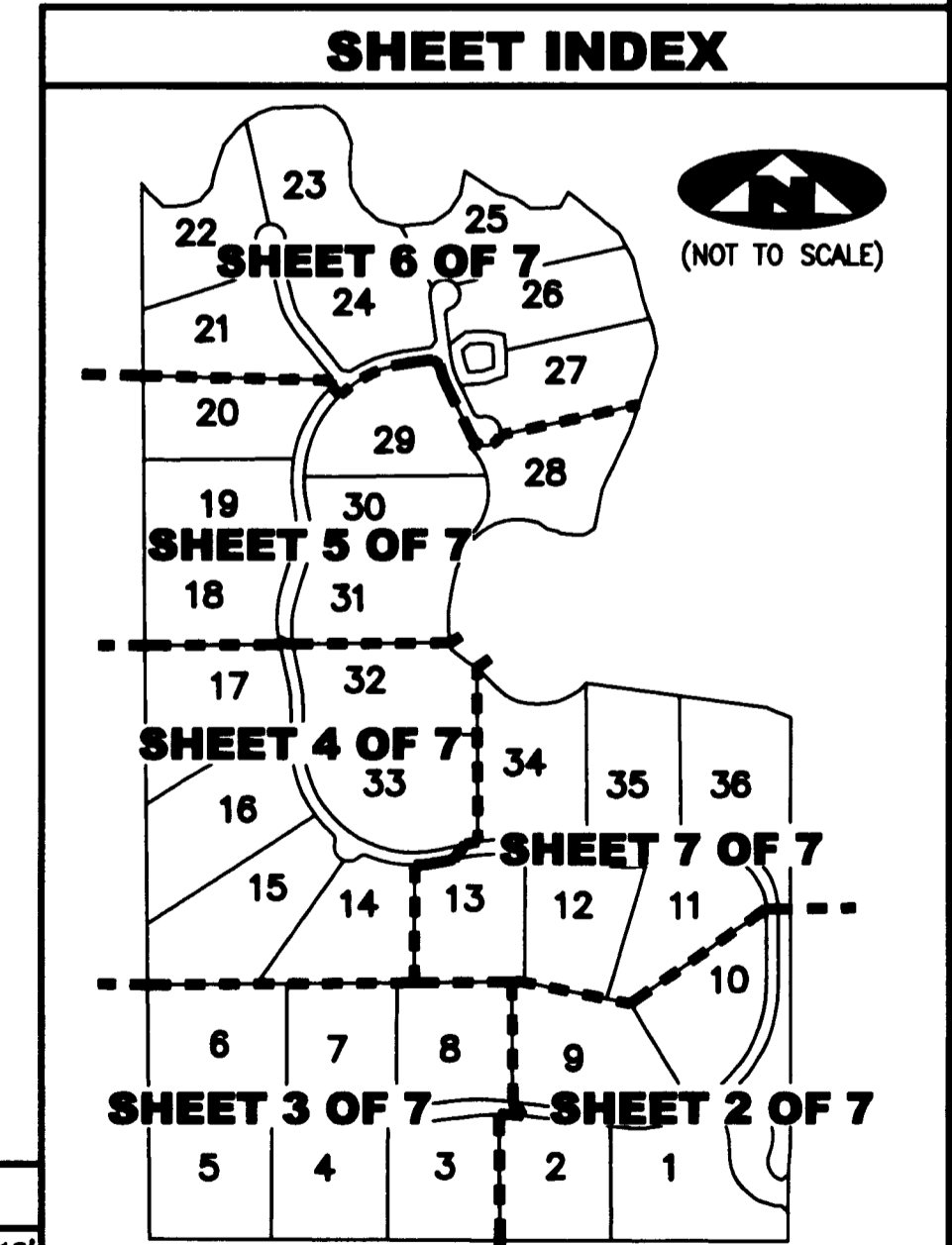
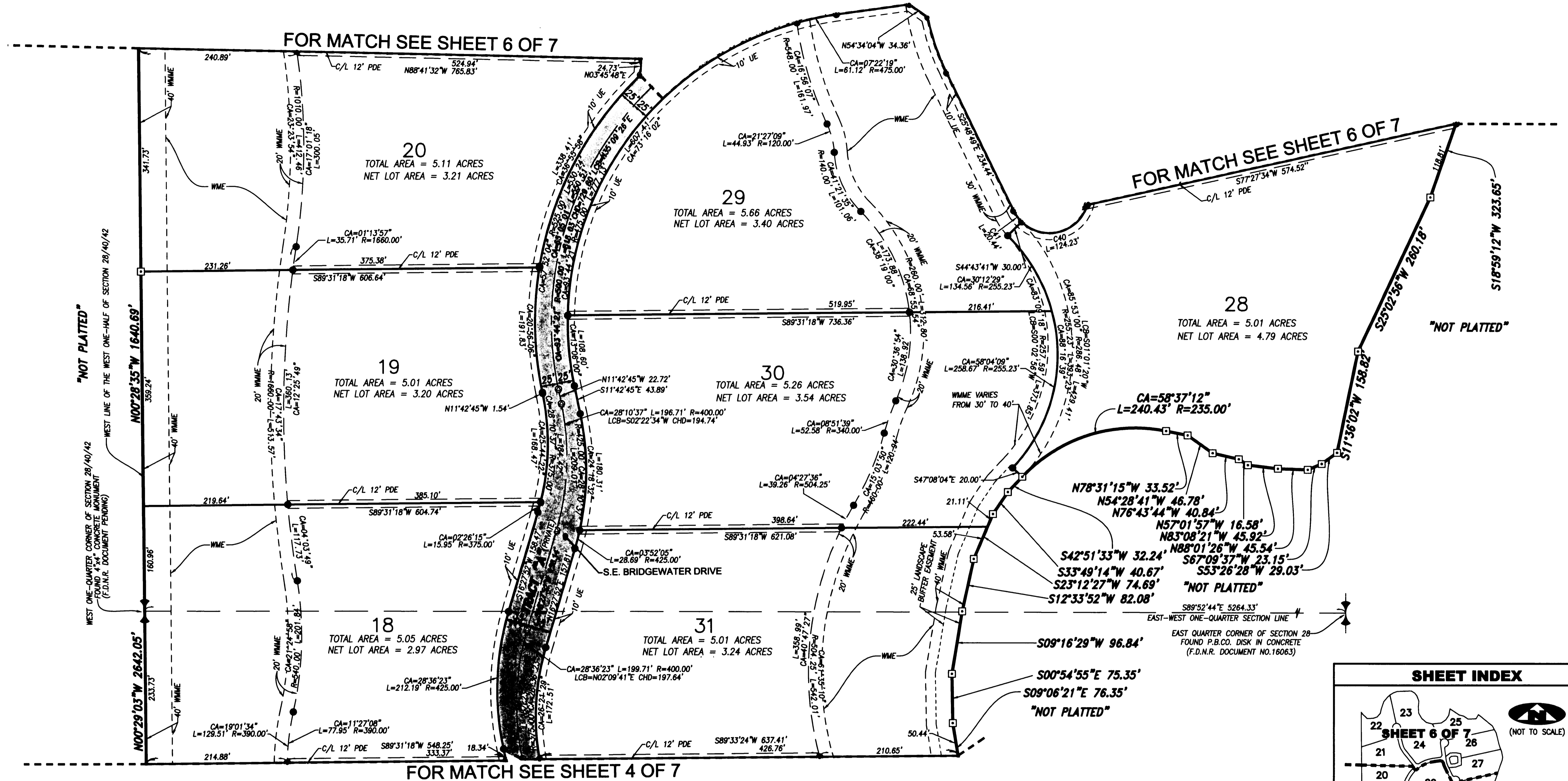
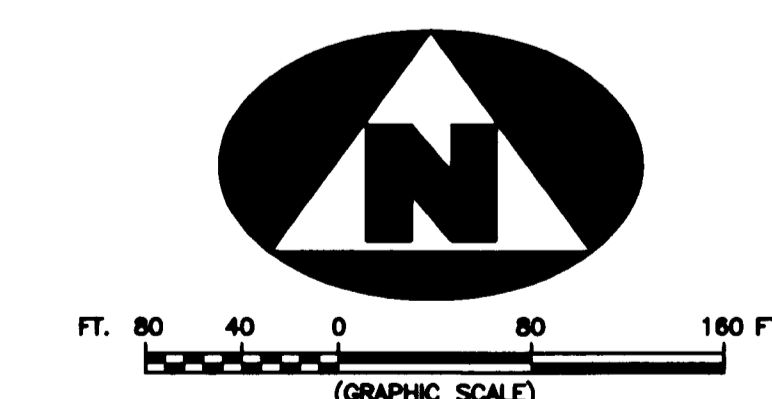


LYING IN THE WEST ONE-HALF OF SECTION 28, TOWNSHIP 40 SOUTH, RANGE 42 EAST, MARTIN COUNTY, FLORIDA



SURVEYOR'S NOTE

1. THE TOTAL LOT AREA INCLUDES ALL EASEMENTS SHOWN ON THE LOT.
2. THE NET LOT AREA EXCLUDES THE WATER MANAGEMENT, WATER MANAGEMENT MAINTENANCE EASEMENTS, AND WILDLIFE/GREENWAY CORRIDOR.



CURVE TABLE

C40	CA=118°37'35"	R=80.00'	L=124.23'	LCB=N75°37'41"E	CHD=105.18'
C41	CA=19°23'40"	R=80.00'	L=20.31'	LCB=S33°30'58"E	CHD=20.32'

■ DENOTES LIMITS OF ACCESS EASEMENT FROM BRIDGEWATER TO COMMUNITIES PROPERTY (ORB 2136, PAGE 1879)

LEGEND

(R) A RADIAL LINE	R RADIUS DISTANCE	SFWMD SOUTH FLORIDA WATER MANAGEMENT DISTRICT
C/L A CENTERLINE	L ARC LENGTH DISTANCE	⊕ A SET PERMANENT REFERENCE MONUMENT
PDE PRIVATE DRAINAGE EASEMENT	CA CENTRAL ANGLE	⊕ 4"x4" CONCRETE MONUMENT WITH DISK (LB 7344)
UE UTILITY EASEMENT	LCB LONG CHORD BEARING	⊕ 5/8" IRON ROD AND CAP (LB 7344)
WME WATER MANAGEMENT EASEMENT	CHD CHORD DISTANCE	⊕ PERMANENT CONTROL POINT
WMAE WATER MANAGEMENT MAINTENANCE EASEMENT	ORB OFFICIAL RECORDS BOOK	⊕ CARRIAGE BOLT AND WASHER (LB 7344)
F.D.N.R. FLORIDA DEPARTMENT OF NATURAL RESOURCES	P.S.M. PROFESSIONAL SURVEYOR AND MAPPER	⊕ A FOUND PERMANENT CONTROL POINT
P.B.CO. PALM BEACH COUNTY	PG PAGE	⊕ CARRIAGE BOLT AND WASHER

SURVEYOR'S NOTES

1. THE BASE BEARING, AS SHOWN HEREON, IS NORTH 89°46'29" WEST, ALONG THE SOUTH LINE OF THE WEST ONE-HALF OF SECTION 28, TOWNSHIP 40 SOUTH, RANGE 42 EAST, AS SHOWN HEREON.
2. IN THOSE INSTANCES WHERE UTILITY OR DRAINAGE STRUCTURES ARE CONSTRUCTED IN CONFLICT WITH THE PLATTED PERMANENT CONTROL POINT POSITION STRADDLERS MONUMENTED AS PERMANENT CONTROL POINTS WILL BE SET TO REFERENCE THE PLATTED POSITION.
3. LINES THAT INTERSECT CURVES ARE NOT RADIAL UNLESS OTHERWISE NOTED.
4. THIS INSTRUMENT WAS PREPARED BY WM. R. VAN CAMPEN, P.S.M. NO. 2424, IN AND FOR THE OFFICES OF ASSOCIATED LAND SURVEYORS, INC., 4152 WEST BLUE HERON BOULEVARD, SUITE 121, RIVIERA BEACH, FLORIDA, 33407

ASSOCIATED LAND SURVEYORS, INC.
 4152 W. BLUE HERON BOULEVARD—SUITE 121
 RIVIERA BEACH, FLORIDA 33404
 LB NO. 7344
 PHONE: (561) 848-2102 FAX: (561) 844-9859 EMAIL: ALLSURVEY@AOL.COM

FILE: P271_PLOT

FB:	WO.NO.: P271
SCALE: 1"=80'	DATE: 8/10/2004
DWN: KVC	SHEET 5 OF 7