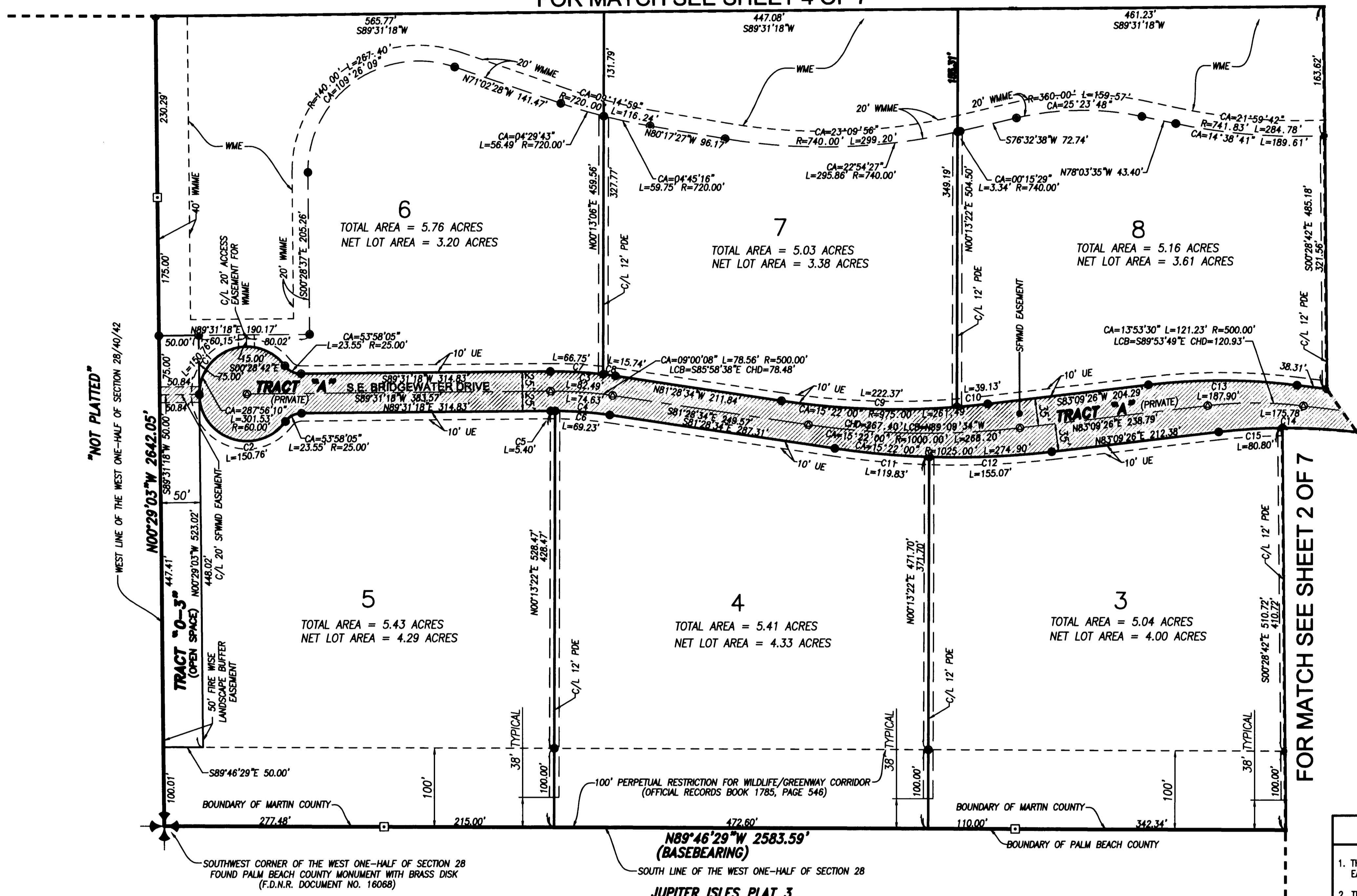
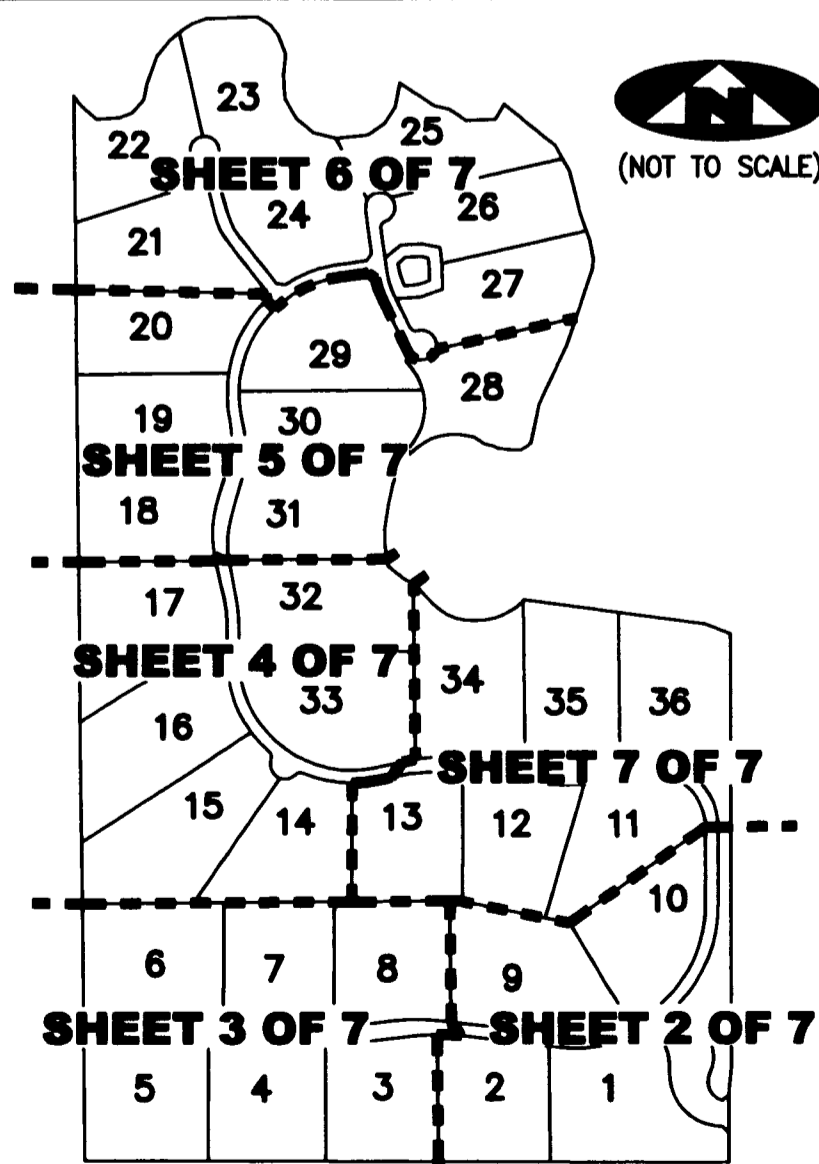


FOR MATCH SEE SHEET 4 OF 7



FOR MATCH SEE SHEET 2 OF 7

SHEET INDEX



■ DENOTES LIMITS OF ACCESS EASEMENT FROM BRIDGEWATER TO COMMUNITIES PROPERTY (ORB 2136, PAGE 1879) ▨ DENOTES LIMITS OF SFWMD EASEMENT

LEGEND

Table with 2 columns: Symbol and Description. Includes entries for Radial Line, Centerline, Private Drainage Easement, Utility Easement, Water Management Easement, Water Management Maintenance Easement, F.D.N.R. Florida Department of Natural Resources, P.B.O. Palm Beach County, Radius Distance, Arc Length Distance, Central Angle, Long Chord Bearing, Chord Distance, Official Records Book, Professional Surveyor and Mapper Page, South Florida Water Management District, Set Permanent Reference Monument, Concrete Monument with Disk, Iron Rod and Cap, Permanent Control Point, Carriage Bolt and Washer, Found Permanent Control Point, Carriage Bolt and Washer.

SURVEYOR'S NOTES

- 1. THE BASE BEARING, AS SHOWN HEREON, IS NORTH 89°46'29" WEST, ALONG THE SOUTH LINE OF THE WEST ONE-HALF OF SECTION 28, TOWNSHIP 40 SOUTH, RANGE 42 EAST, AS SHOWN HEREON.
2. IN THOSE INSTANCES WHERE UTILITY OR DRAINAGE STRUCTURES ARE CONSTRUCTED IN CONFLICT WITH THE PLATTED PERMANENT CONTROL POINT POSITION STRADDLERS MONUMENTED AS PERMANENT CONTROL POINTS WILL BE SET TO REFERENCE THE PLATTED POSITION.
3. LINES THAT INTERSECT CURVES ARE NOT RADIAL UNLESS OTHERWISE NOTED.
4. THIS INSTRUMENT WAS PREPARED BY WM. R. VAN CAMPEN, P.S.M. NO. 2424, IN AND FOR THE OFFICES OF ASSOCIATED LAND SURVEYORS, INC., 4152 WEST BLUE HERON BOULEVARD, SUITE 121, RIVIERA BEACH, FLORIDA, 33407

SURVEYOR'S NOTE

- 1. THE TOTAL LOT AREA INCLUDES ALL EASEMENTS SHOWN ON THE LOT.
2. THE NET LOT AREA EXCLUDES THE WATER MANAGEMENT, WATER MANAGEMENT MAINTENANCE EASEMENTS, AND WILDLIFE/GREENWAY CORRIDOR.

CURVE TABLE

Table with 5 columns: Curve ID, CA (Central Angle), R (Radius), L (Arc Length), LCB (Long Chord Bearing), CHD (Chord Distance). Lists curves C1 through C15 with their respective measurements.



ASSOCIATED LAND SURVEYORS, INC. 4152 W. BLUE HERON BOULEVARD—SUITE 121 RIVIERA BEACH FLORIDA 33404 LB NO. 7344 PHONE: (561) 848-2102 FAX: (561) 844-9659 EMAIL: ALSURVEY@AOL.COM

Table with 2 columns: Field and Value. Includes entries for File (P271_PLOT), FB (), WO.NO. (P271), SCALE (1"=80'), DATE (8/10/2004), DWN (KVC), SHEET (3 OF 7).