

# A PLAT OF VILABELLA

BEING A PARCEL OF LAND LYING IN SECTION 9,  
TOWNSHIP 38 SOUTH, RANGE 41 EAST, CITY OF STUART, MARTIN COUNTY, FLORIDA.

### CLERK'S RECORDING CERTIFICATE

I, MARSHA EWING, CLERK OF THE CIRCUIT COURT OF MARTIN COUNTY, FLORIDA, HEREBY CERTIFY THAT THIS PLAT WAS FILED FOR RECORD IN

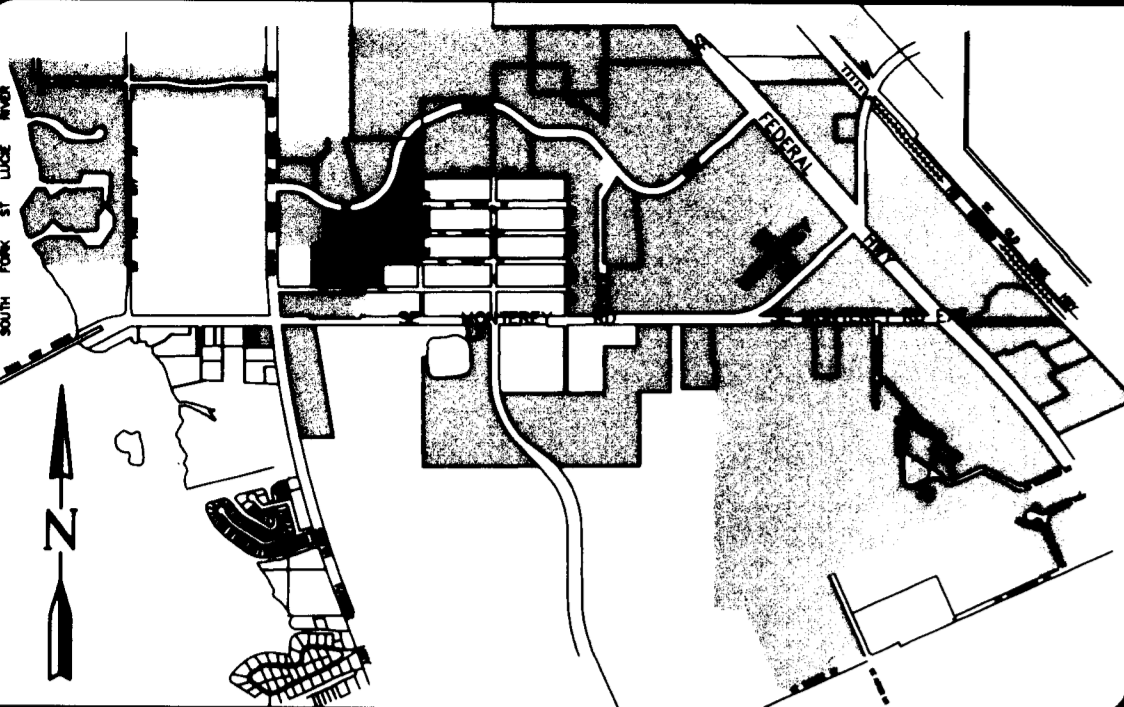
PLAT BOOK \_\_\_\_\_, PAGE \_\_\_\_\_,  
MARTIN COUNTY, FLORIDA, PUBLIC RECORDS THIS

\_\_\_\_\_ DAY OF \_\_\_\_\_, 2006.

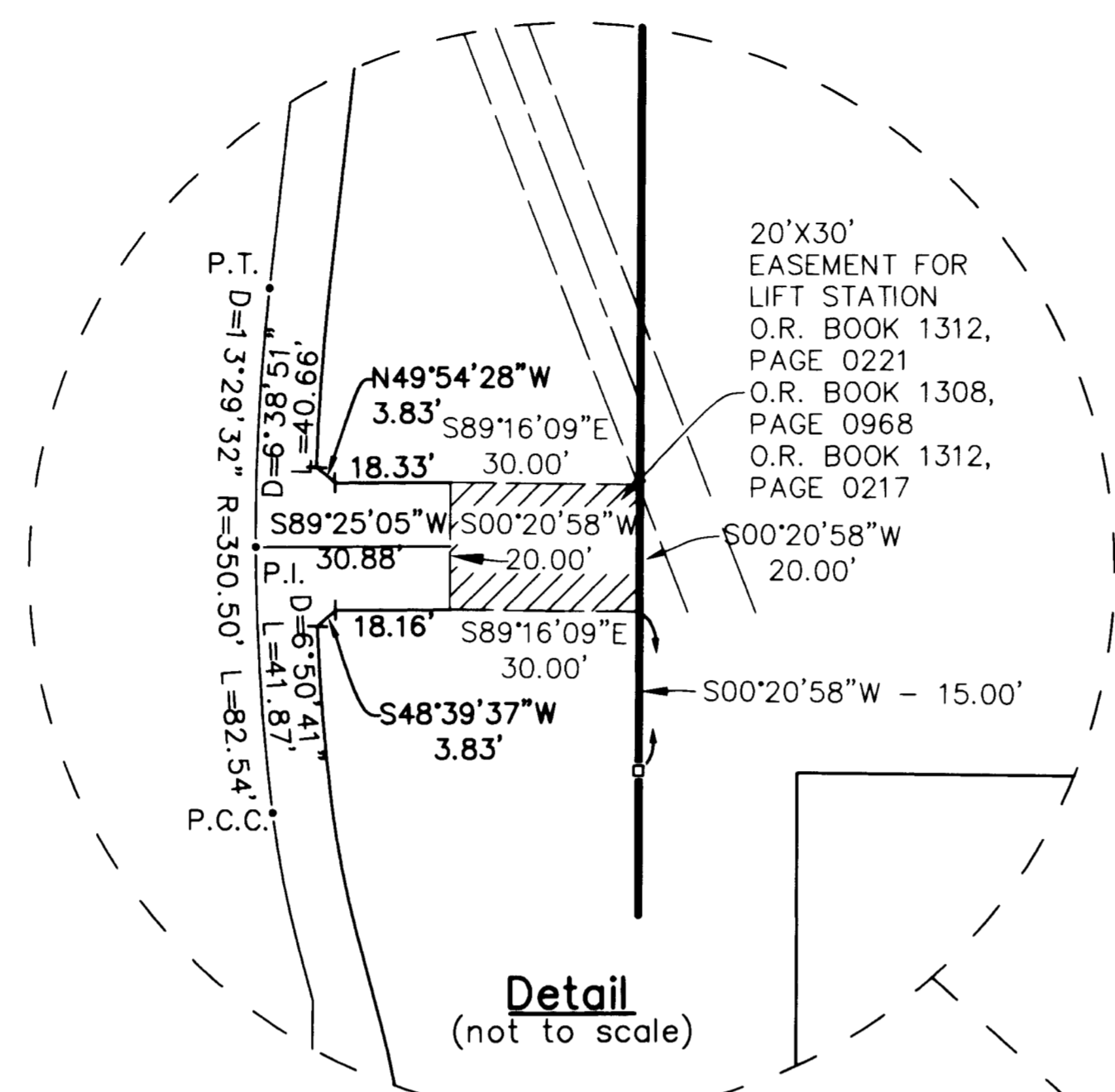
MARSHA EWING, CLERK OF THE CIRCUIT COURT  
MARTIN COUNTY, FLORIDA.

FILE NUMBER \_\_\_\_\_ BY \_\_\_\_\_  
DEPUTY CLERK

SUBDIVISION PARCEL CONTROL NUMBER



LOCATION MAP  
NOT TO SCALE

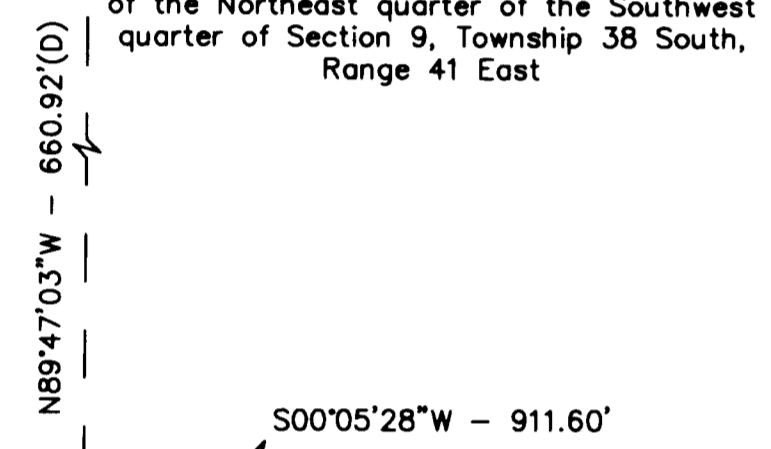


Unplatted

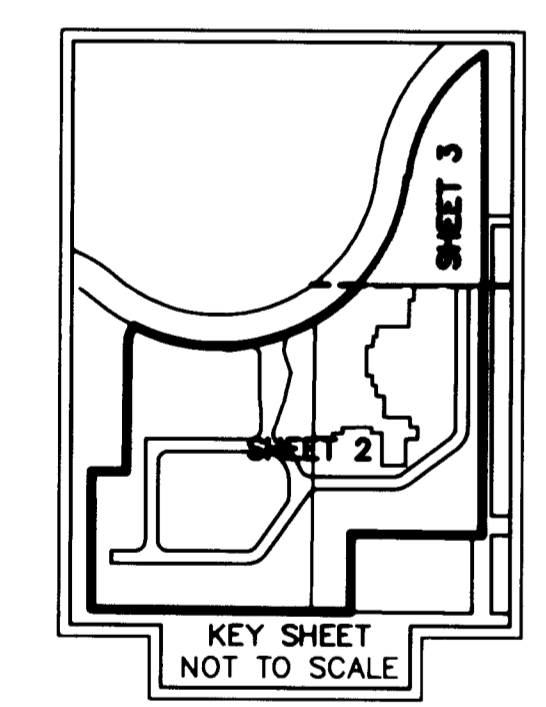
Detail  
(not to scale)

See Detail  
(this sheet)

**Point of commencement**  
Northeast corner of the Northwest quarter of the Northeast quarter of the Southwest quarter of Section 9, Township 38 South, Range 41 East



FND 4x4 C.M. PRM  
"PSM 4049"  
NORTH=0.33'  
**Point of Beginning  
Parcel 1**



KEY SHEET  
NOT TO SCALE

Unity Church Subdivision  
P.B. 15, Pg. 24  
Martin County, Florida

Plat of Central Park  
P.B. 14, Pg. 24  
Martin County, Florida

Plat of Monterey Subdivision  
P.B. 1, Pg. 10  
Martin County, Florida

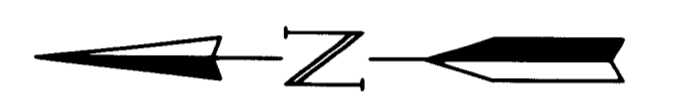
S.E. Velasquez St.

S.E. Central  
Parkway

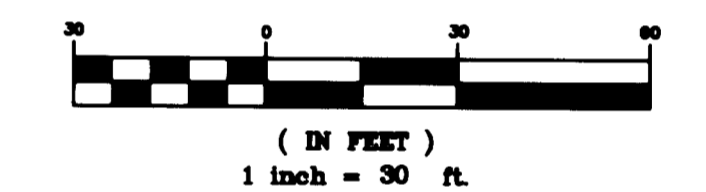
WATER MANAGEMENT  
TRACT 1

S.E. PALERMO COURT (PRIVATE)

S.E. San Jose St.



GRAPHIC SCALE



### LEGEND

- U.E. = UTILITY EASEMENT
- D = CURVE DELTA ANGLE
- R = CURVE RADIUS
- L = CURVE LENGTH
- (M) = FIELD MEASUREMENT
- (D) = DEED MEASUREMENT
- (P) = PLAT MEASUREMENT
- O.R.B. = OFFICIAL RECORD BOOK
- Pg. = PAGE
- P.B. = PLAT BOOK
- = SET PERMANENT REFERENCE MONUMENT (PRM) 4"x4" CONCRETE MONUMENT WITH DISK LABELED "GCY INC. P.R.M. LB 4108, PSM 4130"
- = P.C.P.-P.K.(PARKER KALON) NAIL & BASS WASHER STAMPED "PCP GCY, INC. LB 4108"
- C.M. = CONCRETE MONUMENT
- FND = FOUND
- P.T. = POINT OF TANGENCY
- P.I. = POINT OF INTERSECTION
- P.C. = POINT OF CURVEATURE
- P.C.C. = POINT OF COMPUND CURVE

MATCH LINE - "A" SEE SHEET 2 OF 3

Job Number 05-1019-02

**GCY**  
INCORPORATED  
PROFESSIONAL SURVEYORS AND MAPPERS  
CERTIFICATE OF AUTHORIZATION LB 4108

CORPORATE OFFICE: 4909 N. MONROE STREET, TALLAHASSEE, FL 32303  
PALM CITY, FL 34991  
(850) 386-1066

TALLAHASSEE OFFICE: 4909 N. MONROE STREET, TALLAHASSEE, FL 32303  
(850) 536-8455