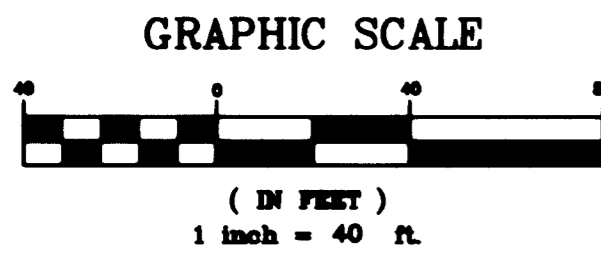
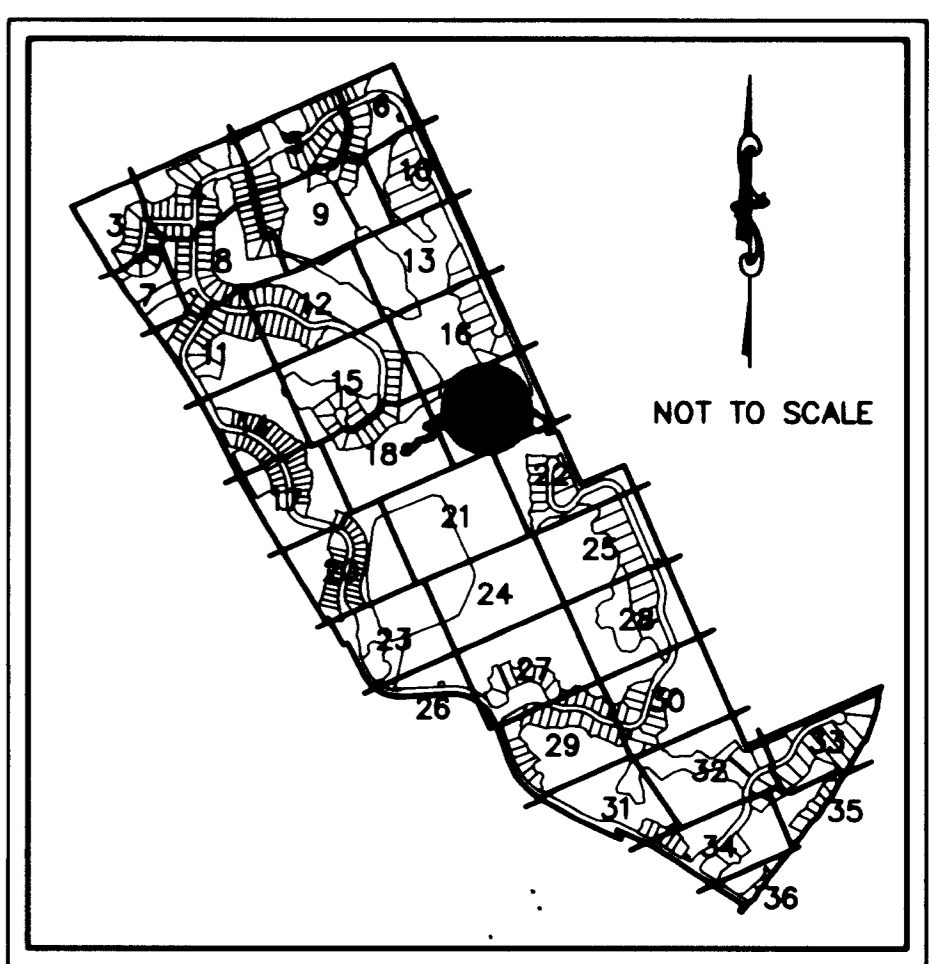
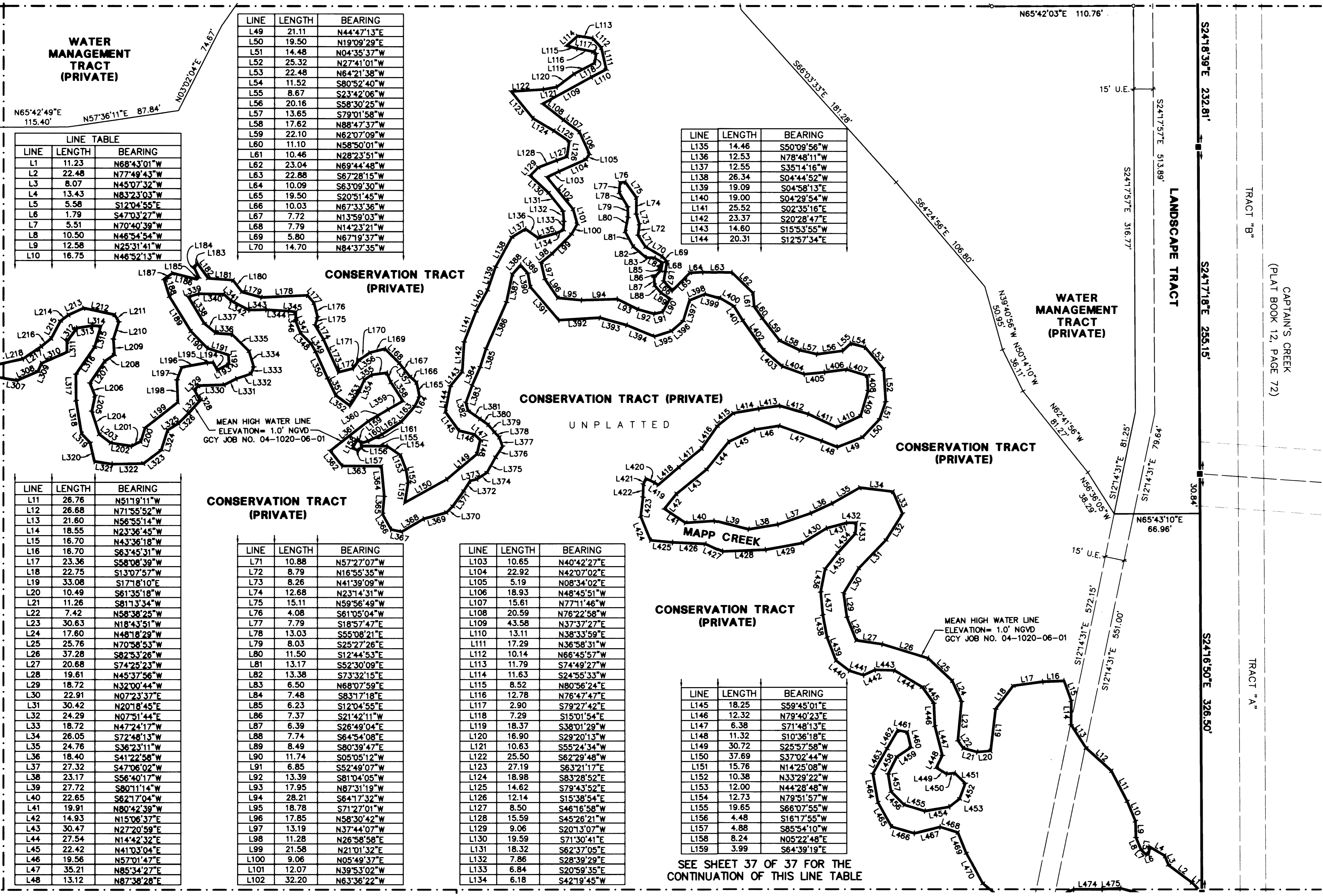


Highlands Reserve P.U.D.

Being a portion of the Miles or Hanson Grant, as recorded in Plat Book 1, Page 11, public records of Dade (now Martin) County, Florida and being a replat of a portion of St. Lucie Inlet Farms, as recorded in Plat Book 1, Page 98, public records of Palm Beach (now Martin) County, Florida.



SEE SHEET 16



WATER MANAGEMENT TRACT (PRIVATE)

LINE	LENGTH	BEARING
L1	11.23	N68°43'01"W
L2	22.48	N77°49'43"W
L3	8.07	N45°07'32"W
L4	13.43	N83°23'03"W
L5	5.58	S12°04'55"E
L6	1.79	S47°03'27"W
L7	5.51	N70°40'39"W
L8	10.50	N46°54'54"W
L9	12.58	N25°31'41"W
L10	16.75	N48°52'13"W

LINE	LENGTH	BEARING
L49	21.11	N44°47'13"E
L50	19.50	N19°09'29"E
L51	14.48	N04°35'37"W
L52	25.32	N27°41'01"W
L53	22.48	N64°21'38"W
L54	11.52	S80°52'40"W
L55	8.67	S23°42'06"W
L56	20.16	S58°30'25"W
L57	13.65	S79°01'58"W
L58	17.62	N88°47'37"W
L59	22.10	N62°07'09"W
L60	11.10	N58°50'01"W
L61	10.46	N28°23'51"W
L62	23.04	N69°44'48"W
L63	22.88	S67°28'15"W
L64	10.09	S63°09'30"W
L65	19.50	S20°51'45"W
L66	10.03	N67°33'36"W
L67	7.72	N13°59'03"W
L68	7.79	N14°23'21"W
L69	5.80	N67°19'37"W
L70	14.70	N84°37'35"W

LINE	LENGTH	BEARING
L135	14.46	S50°09'56"W
L136	12.53	N78°48'11"W
L137	12.55	S35°14'16"W
L138	26.34	S04°44'52"W
L139	19.09	S04°58'13"E
L140	19.00	S04°29'54"W
L141	25.52	S02°35'16"E
L142	23.37	S20°28'47"E
L143	14.60	S15°53'55"W
L144	20.31	S12°57'34"E

LINE	LENGTH	BEARING
L11	26.76	N51°19'11"W
L12	26.68	N71°55'52"W
L13	21.60	N56°55'14"W
L14	18.55	N23°36'45"W
L15	16.70	N43°36'18"W
L16	16.70	S63°45'31"W
L17	23.36	S58°08'39"W
L18	22.75	S13°07'57"W
L19	33.08	S17°18'10"E
L20	10.49	S61°35'18"W
L21	11.26	S81°13'34"W
L22	7.42	N58°38'25"W
L23	30.63	N18°43'51"W
L24	17.60	N48°18'29"W
L25	25.76	N70°58'53"W
L26	37.28	S82°53'26"W
L27	20.68	S74°25'23"W
L28	19.61	N45°37'56"W
L29	18.72	N32°00'44"W
L30	22.91	N07°23'37"E
L31	30.42	N20°18'45"E
L32	24.29	N07°51'44"E
L33	18.72	N47°24'17"W
L34	26.05	S72°48'13"W
L35	24.76	S36°23'11"W
L36	18.40	S41°22'58"W
L37	27.32	S47°06'02"W
L38	23.17	S56°40'17"W
L39	27.72	S80°11'14"W
L40	22.65	S62°17'04"W
L41	19.91	N80°42'39"W
L42	14.93	N15°06'37"E
L43	30.47	N27°20'59"E
L44	27.54	N14°42'32"E
L45	22.42	N41°03'04"E
L46	19.56	N57°01'47"E
L47	35.21	N85°34'27"E
L48	13.12	N87°38'28"E

LINE	LENGTH	BEARING
L71	10.88	N57°27'07"W
L72	8.79	N16°55'35"W
L73	8.26	N41°39'09"W
L74	12.68	N23°14'31"W
L75	15.11	N59°56'49"W
L76	4.08	S61°05'04"W
L77	7.79	S18°57'47"E
L78	13.03	S55°08'21"E
L79	8.03	S25°27'26"E
L80	11.50	S12°44'53"E
L81	13.17	S52°30'09"E
L82	13.38	S73°32'15"E
L83	6.50	N68°07'59"E
L84	7.48	S83°17'18"E
L85	6.23	S12°04'55"E
L86	7.37	S21°42'11"W
L87	6.39	S26°49'04"E
L88	7.74	S64°54'08"E
L89	8.49	S80°39'47"E
L90	11.74	S05°05'12"W
L91	6.85	S52°49'07"W
L92	13.39	S81°04'05"W
L93	17.95	N87°31'19"W
L94	28.21	S64°17'32"W
L95	18.78	S71°27'01"W
L96	17.85	N58°30'42"W
L97	13.19	N37°44'07"W
L98	11.28	N26°58'58"E
L99	21.58	N21°01'32"E
L100	9.06	N05°49'37"E
L101	12.07	N39°53'02"W
L102	32.20	N63°36'22"W

LINE	LENGTH	BEARING
L103	10.65	N40°42'27"E
L104	22.92	N42°07'02"E
L105	5.19	N08°34'02"E
L106	18.93	N48°45'51"W
L107	15.61	N77°11'46"W
L108	20.59	N76°22'58"W
L109	43.58	N37°37'27"E
L110	13.11	N38°33'59"E
L111	17.29	N36°58'31"W
L112	10.14	N66°45'57"W
L113	11.79	S74°49'27"W
L114	11.63	S24°55'33"W
L115	8.52	N80°58'24"E
L116	12.78	N76°47'47"E
L117	2.90	S79°27'42"E
L118	7.29	S15°01'54"E
L119	18.37	S38°01'29"W
L120	16.90	S29°20'13"W
L121	10.63	S55°24'34"W
L122	25.50	S62°29'48"W
L123	27.19	S63°21'17"E
L124	18.98	S83°28'52"E
L125	14.62	S79°43'52"E
L126	12.14	S15°38'54"E
L127	8.50	S46°16'58"W
L128	15.59	S45°26'21"W
L129	9.06	S20°13'07"W
L130	19.59	S71°30'41"E
L131	18.32	S62°37'05"E
L132	7.86	S28°39'29"E
L133	6.84	S20°59'35"E
L134	6.18	S42°19'45"W

LINE	LENGTH	BEARING
L145	18.25	S59°45'01"E
L146	12.32	N79°40'23"E
L147	6.38	S71°48'13"E
L148	11.32	S10°36'18"E
L149	30.72	S25°57'58"W
L150	37.69	S37°02'44"W
L151	15.76	N14°25'08"W
L152	10.38	N33°29'22"W
L153	12.00	N44°28'48"W
L154	12.73	N79°51'57"W
L155	19.65	S66°07'55"W
L156	4.48	S16°17'55"W
L157	4.88	S85°54'10"W
L158	8.24	N05°22'48"E
L159	3.99	S64°39'19"E

SEE SHEET 37 OF 37 FOR THE CONTINUATION OF THIS LINE TABLE

LEGEND

- SET PERMANENT CONTROL POINT (PCP)
- PARKER KALON NAIL & WASHER, LABELED "PCP GCY LB 4108"
- SET 3/4" IRON PIPE WITH YELLOW CAP LABELED, "GCY, INC. LB 4108"
- SET PERMANENT REFERENCE MONUMENT (FRM) 4"x4" CONCRETE MONUMENT WITH DISK LABELED, "GCY, INC. P.R.M. LB 4108, PSM 4864"
- D = DELTA (CENTRAL ANGLE)
- L = ARC LENGTH
- R = RADIUS
- CH = CHORD BEARING AND LENGTH
- D.E. = DRAINAGE EASEMENT (PRIVATE)
- FP&L = FLORIDA POWER & LIGHT COMPANY
- LB = LAND SURVEY BUSINESS
- L.B.E. = LANDSCAPE BUFFER EASEMENT
- NGVD = NATIONAL GEODETIC VERTICAL DATUM
- O.R.B. = OFFICIAL RECORD BOOK
- P.C. = POINT OF CURVATURE
- P.C.C. = POINT OF COMPOUND CURVATURE
- P.I. = POINT OF INTERSECTION
- P.R.C. = POINT OF REVERSE CURVATURE
- PSM = PROFESSIONAL SURVEYOR AND MAPPER
- P.T. = POINT OF TANGENCY
- PUD = PLANNED UNIT DEVELOPMENT
- (R) = RADIAL LINE
- U.E. = UTILITY EASEMENT

- SURVEYOR'S NOTES**
- THIS PLAT, AS RECORDED IN ITS ORIGINAL FORM IN THE PUBLIC RECORDS, IS THE OFFICIAL DEPICTION OF THE SUBDIVIDED LANDS DESCRIBED HEREON AND WILL IN NO CIRCUMSTANCES BE SUPPLANTED IN AUTHORITY BY ANY OTHER FORM OF THIS PLAT, WHETHER GRAPHIC OR DIGITAL.
 - THERE MAY BE ADDITIONAL RESTRICTIONS THAT ARE NOT RECORDED ON THIS PLAT THAT MAY BE FOUND IN THE PUBLIC RECORDS OF THIS COUNTY.
 - IT SHALL BE UNLAWFUL TO ALTER THE APPROVED SLOPES, CONTOURS, OR CROSS SECTIONS OR TO CHEMICALLY, MECHANICALLY, OR MANUALLY REMOVE, DAMAGE, OR DESTROY ANY PLANTS IN THE LITTORAL OR UPLAND TRANSITION ZONE BUFFER AREAS OF CONSTRUCTED LAKES EXCEPT UPON THE WRITTEN APPROVAL OF THE GROWTH MANAGEMENT DIRECTOR, AS APPLICABLE. IT IS THE RESPONSIBILITY OF THE OWNER OR PROPERTY OWNERS ASSOCIATION, ITS SUCCESSORS OR ASSIGNS TO MAINTAIN THE REQUIRED SURVIVORSHIP AND COVERAGE OF THE RECLAIMED UPLAND AND PLANTED LITTORAL AND UPLAND TRANSITION AREAS AND TO ENSURE ON-GOING REMOVAL OF PROHIBITED AND INVASIVE NON-NATIVE PLANT SPECIES FROM THESE AREAS.
 - CONSERVATION TRACT (PRIVATE)S SHALL BE PROTECTED FROM EXCAVATION, CONSTRUCTION AND OTHER BUILDING MAINTENANCE ACTIVITIES.
 - BEARINGS SHOWN HEREON ARE REFERENCED TO THE SOUTH LINE OF HAMMOCK CREEK PLAT NO. 1 (PLAT BOOK 13, PAGE 75). SAID LINE BEARS NORTH 66°01'46" EAST.

Job Number 04-1020-01
Licensed Business #4108

GCY
INCORPORATED
PROFESSIONAL SURVEYORS AND MAPPERS
CERTIFICATE OF AUTHORIZATION LB 4108

CORPORATE OFFICE: TALLAHASSEE OFFICE
PO BOX 1489 • 1505 SW MARTIN HWY. 4809 N. MONROE STREET
TALLAHASSEE, FL 32303 TALLAHASSEE, FL 32303
(850) 386-1068 (850) 536-8455