

PINEAPPLE PLANTATION PLAT 9

LYING IN THE CITY OF STUART
 BEING A REPLAT OF A PORTION OF SECTIONS 20 AND 29, TOWNSHIP 37 SOUTH, RANGE 41 EAST
 ST. LUCIE GARDENS PLAT NO. 1, AS RECORDED IN PLAT BOOK 1, PAGE 35 OF THE PUBLIC RECORDS OF
 ST. LUCIE (NOW MARTIN) COUNTY, FLORIDA.

CLERK'S RECORDING CERTIFICATE
 I, MARSHA EWING, CLERK OF THE CIRCUIT COURT OF MARTIN COUNTY, FLORIDA, HEREBY CERTIFY THAT THIS PLAT WAS FILED FOR RECORD IN PLAT BOOK 1, PAGE 35 OF THE PUBLIC RECORDS OF MARTIN COUNTY, FLORIDA, PUBLIC RECORDS, THIS 31st DAY OF May, 2005.
 Marsha Ewing
 MARSHA EWING, CLERK OF THE CIRCUIT COURT
 MARTIN COUNTY, FLORIDA
 FILE NUMBER 1243337 BY Charlotte Sunkaya
 DEPUTY CLERK

20-37-41-005-000-0000.0
 SUBDIVISION PARCEL CONTROL NUMBER

CERTIFICATE OF OWNERSHIP AND DEDICATION

KNOWN ALL MEN BY THESE PRESENTS THAT: PINEAPPLE PLANTATION JOINT VENTURE, A FLORIDA JOINT VENTURE, THE OWNER OF THE LAND DESCRIBED AND SHOWN ON THIS PLAT OF PINEAPPLE PLANTATION PLAT 9, HAS CAUSED THE SAME TO BE SURVEYED AND PLATTED AS SHOWN HEREON AND DOES HEREBY DEDICATE AS FOLLOWS:

1. ROAD RIGHTS-OF-WAY: THE ROAD RIGHTS-OF-WAY SHOWN ON THIS PLAT OF PINEAPPLE PLANTATION PLAT 9 ARE HEREBY DEDICATED TO THE PINEAPPLE PLANTATION PROPERTY OWNERS' ASSOCIATION, INC., FOR ACCESS DRAINAGE AND UTILITY PURPOSES BY ANY UTILITY, INCLUDING C.A.T.V., AND SHALL BE THE PERPETUAL MAINTENANCE OBLIGATION OF SAID ASSOCIATION. THE CITY OF STUART SHALL HAVE AUTHORITY OVER, BUT SHALL BEAR NO RESPONSIBILITY, DUTY OR LIABILITY REGARDING SUCH RIGHT-OF-WAY.
2. UTILITY EASEMENTS: THE UTILITY EASEMENTS AS SHOWN ON THIS PLAT OF PINEAPPLE PLANTATION PLAT 9 MAY BE USED FOR CONSTRUCTION, INSTALLATION, MAINTENANCE AND OPERATION OF UTILITIES BY ANY UTILITY INCLUDING CABLE TELEVISION FACILITIES AND SERVICES PROVIDED HOWEVER, THAT NO SUCH CONSTRUCTION, INSTALLATION, MAINTENANCE OR OPERATION OF CABLE TELEVISION FACILITIES AND SERVICES SHALL INTERFERE WITH THE FACILITIES AND SERVICES OF AN ELECTRIC, TELEPHONE, GAS OR OTHER PUBLIC UTILITY. IN THE EVENT A CABLE TELEVISION COMPANY DAMAGES THE FACILITIES OF A PUBLIC UTILITY, IT SHALL BE SOLELY RESPONSIBLE FOR THOSE DAMAGES. THIS SECTION SHALL NOT APPLY TO THOSE PRIVATE EASEMENTS GRANTED OR OBTAINED BY A PARTICULAR ELECTRIC, TELEPHONE, GAS OR OTHER PUBLIC UTILITY. SUCH CONSTRUCTION, INSTALLATION, MAINTENANCE AND OPERATION SHALL COMPLY WITH THE NATIONAL ELECTRIC SAFETY CODE AS ADOPTED BY THE FLORIDA PUBLIC SERVICE COMMISSION. THE CITY OF STUART SHALL HAVE AUTHORITY OVER, BUT SHALL BEAR NO RESPONSIBILITY, DUTY OR LIABILITY REGARDING SAID UTILITY EASEMENTS.
3. LAKES, LAKE MAINTENANCE EASEMENTS AND WATER MANAGEMENT TRACTS AS SHOWN HEREON, ARE HEREBY DEDICATED TO THE PINEAPPLE PLANTATION PROPERTY OWNERS' ASSOCIATION, INC. FOR WATER MANAGEMENT PURPOSES AND SHALL BE THE PERPETUAL MAINTENANCE OBLIGATION OF SAID ASSOCIATION. THE CITY OF STUART HAS REGULATORY AUTHORITY OVER BUT SHALL BEAR NO RESPONSIBILITY, DUTY OR LIABILITY REGARDING SAID LAKES, LAKE MAINTENANCE EASEMENTS AND WATER MANAGEMENT TRACTS.
4. WETLAND PRESERVE AREAS, WETLAND BUFFERS AND UPLAND PRESERVE AREAS: THE WETLAND PRESERVE AREAS, WETLAND BUFFERS AND UPLAND PRESERVE AREAS AS SHOWN ON THIS PLAT OF PINEAPPLE PLANTATION PLAT 9, ARE HEREBY DEDICATED TO THE PINEAPPLE PLANTATION PROPERTY OWNERS' ASSOCIATION, INC. FOR PRESERVATION PURPOSES AND SHALL BE THE MAINTENANCE RESPONSIBILITY OF THE PINEAPPLE PLANTATION PROPERTY OWNERS' ASSOCIATION, INC., ITS SUCCESSORS-IN-TITLE AND ASSIGNS IN ACCORDANCE WITH THE PRESERVE AREA MANAGEMENT PLAN (PAMP) APPROVED BY THE CITY OF STUART, AND MAY IN NO WAY BE ALTERED FROM THEIR NATURAL STATE WITH THE EXCEPTION OF EXOTIC/NUISANCE VEGETATION REMOVAL. ACTIVITIES PROHIBITED WITHIN SAID WETLAND PRESERVE AREAS, WETLAND BUFFERS AND UPLAND PRESERVE AREAS INCLUDE BUT ARE NOT LIMITED TO CONSTRUCTION OR PLACING OF BUILDINGS ON OR ABOVE THE GROUND; DUMPING OR PLACING SOILS OR OTHER SUBSTANCES, SUCH AS TRASH; REMOVAL OR DESTRUCTION OF TREES, SHRUBS OR OTHER NATIVE VEGETATION; EXCAVATION; DREDGING OR REMOVAL OF SOIL MATERIALS; DIKING OR FENCING; AND ANY OTHER ACTIVITIES DETRIMENTAL TO DRAINAGE, FLOOD CONTROL, WATER CONSERVATION, EROSION CONTROL OR FISH AND WILDLIFE HABITAT CONSERVATION OR PRESERVATION. THE CITY OF STUART SHALL HAVE AUTHORITY OVER, BUT SHALL BEAR NO RESPONSIBILITY, DUTY OR LIABILITY REGARDING SUCH WETLAND PRESERVE AREAS AND WETLAND BUFFERS.
5. DRAINAGE EASEMENTS: DRAINAGE EASEMENTS AS SHOWN ON THIS PLAT, ARE HEREBY DEDICATED TO THE PINEAPPLE PLANTATION PROPERTY OWNERS' ASSOCIATION, INC. FOR WATER MANAGEMENT PURPOSES AND SHALL BE THE PERPETUAL MAINTENANCE OBLIGATION OF SAID ASSOCIATION. THE CITY OF STUART SHALL HAVE AUTHORITY OVER BUT SHALL BEAR NO RESPONSIBILITY, DUTY OR LIABILITY REGARDING SAID DRAINAGE EASEMENTS.

PINEAPPLE PLANTATION JOINT VENTURE
 BY: WOODLANDS BUILDING COMPANY, A FLORIDA CORPORATION,
 THE MANAGING VENTURE OF PINEAPPLE PLANTATION JOINT VENTURE

WITNESSED AND DELIVERED IN THE PRESENCE OF:
 Terence P. McCarthy, Frank Jacobbe, BY: Frank Jacobbe
 WITNESS SIGNATURE WITNESS SIGNATURE BY: FRANK JACOBBE, PRESIDENT
 Terence P. McCarthy, Pam Sloan, BY: Frank Jacobbe
 PRINTED NAME PRINTED NAME SECRETARY

ACKNOWLEDGMENT

STATE OF FLORIDA
 COUNTY OF MARTIN

THE FOREGOING INSTRUMENT WAS ACKNOWLEDGED BEFORE ME THIS 17th DAY OF February, 2005, BY FRANK JACOBBE, PRESIDENT AND Frank Jacobbe, SECRETARY OF WOODLANDS BUILDING COMPANY, A FLORIDA CORPORATION, ON BEHALF OF THE CORPORATION THE MANAGING VENTURE OF PINEAPPLE PLANTATION JOINT VENTURE. THEY [] ARE PERSONALLY KNOWN TO ME OR [] HAVE PRODUCED [] AS IDENTIFICATION.

Daniel Christian
 NOTARY

CERTIFICATE OF SURVEYOR AND MAPPER

I, DANIEL CHRISTIAN, HEREBY CERTIFY THAT THE PLAT SHOWN HEREON IS A TRUE AND CORRECT REPRESENTATION OF THE LANDS SURVEYED, THAT SUCH SURVEY WAS MADE UNDER MY RESPONSIBLE DIRECTION AND SUPERVISION; THAT SUCH SURVEY IS ACCURATE TO THE BEST OF MY KNOWLEDGE AND BELIEF; THAT PERMANENT REFERENCE MONUMENTS HAVE BEEN PLACED, AS REQUIRED BY LAW; THAT PERMANENT CONTROL POINTS AND LOT CORNERS WILL BE SET FOR THE REQUIRED IMPROVEMENTS WITHIN THE PLATTED LANDS; AND, FURTHER THAT THE SURVEY DATA COMPLIES WITH ALL OF THE REQUIREMENTS OF CHAPTER 177, FLORIDA STATUTES, AND APPLICABLE ORDINANCES OF THE CITY OF STUART, FLORIDA.

Daniel Christian
 DANIEL CHRISTIAN
 PROFESSIONAL SURVEYOR AND MAPPER
 FLORIDA REGISTRATION # 4227

- NOTES:
1. THIS PLAT, AS RECORDED IN ITS ORIGINAL FORM IN THE PUBLIC RECORDS, IS THE OFFICIAL DEPICTION OF THE SUBDIVIDED LANDS DESCRIBED HEREON AND WILL IN NO CIRCUMSTANCES BE SUPPLANTED IN AUTHORITY BY ANY OTHER FORM OF THE PLAT, WHETHER GRAPHIC OR DIGITAL.
 2. THERE MAY BE ADDITIONAL RESTRICTIONS THAT ARE NOT RECORDED ON THIS PLAT THAT MAY BE FOUND IN THE PUBLIC RECORDS OF THIS COUNTY.
 3. WHERE DRAINAGE AND UTILITY EASEMENTS CROSS, DRAINAGE EASEMENTS SHALL TAKE PRECEDENCE.
 4. BEARINGS ARE BASED ON ASSUMED DATUM PER EDWIN MATTHEWS PLS # 3954 ALONG THE NORTH LINE OF THE WEST QUARTER OF SECTION 29, TOWNSHIP 37 SOUTH, RANGE 41 EAST. SAID BEARING IS N89°57'31"W AND ALL OTHER BEARINGS ARE RELATIVE THEREOF.
 5. PROPERTY LIES WITHIN FLOOD ZONE "X", MAP NO. 12085C0132 F, COMMUNITY NO. 120165, EFFECTIVE DATE OCTOBER 4, 2002.
 6. ALL WETLAND INFORMATION WAS DERIVED FROM LEGAL DESCRIPTIONS PREPARED BY GORDON AND ASSOCIATES LAND SURVEYORS, INC., PROVIDED TO ME BY PINEAPPLE PLANTATION JOINT VENTURE AND IN ACCORD WITH THOSE DOCUMENTS LISTED AS SHEETS 1-33 PREPARED BY SAID GORDON AND ASSOCIATES.
 7. ALL LOT LINES ARE RADIAL UNLESS OTHERWISE NOTED.

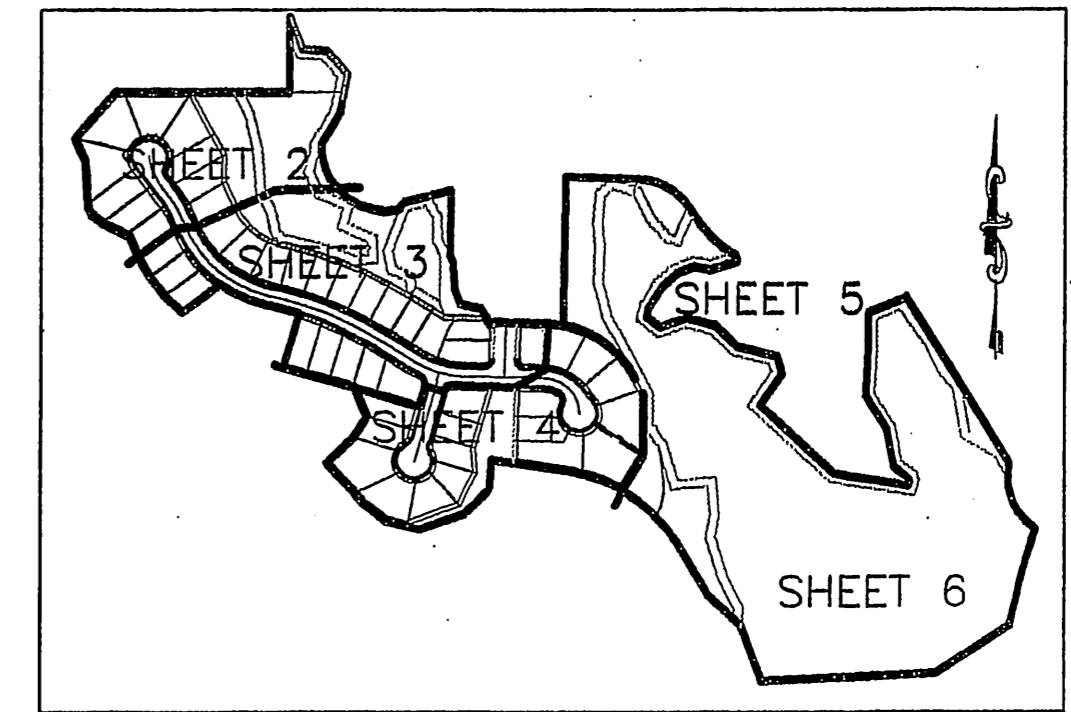
TITLE CERTIFICATION

I, TERENCE P. MCCARTHY, ESQ., A MEMBER OF THE FLORIDA BAR, HEREBY CERTIFY THAT AS OF FEB 1st, 2005 AT 8:00
 1. RECORD TITLE TO THE LAND DESCRIBED AND SHOWN ON THIS PLAT IS IN THE NAME PINEAPPLE PLANTATION JOINT VENTURE A FLORIDA JOINT VENTURE, EXECUTING THE CERTIFICATE OF OWNERSHIP AND DEDICATION HEREON.
 2. ALL RECORDED MORTGAGES, NOT SATISFIED OR RELEASED OF RECORD, OR OTHERWISE TERMINATED BY LAW, ENCUMBERING THE LAND DESCRIBED AS FOLLOWS: MORTGAGE RECORDED IN OFFICIAL RECORDS BOOK PAGE PUBLIC RECORDS OF MARTIN COUNTY, FLORIDA. No mortgages from
 3. ALL TAXES THAT ARE DUE AND PAYABLE PURSUANT TO SECTION 197.192 F.S., HAVE BEEN PAID.
 DATED THIS 17th DAY OF FEBRUARY, 2005.
 Terence P. McCarthy
 TERENCE P. MCCARTHY, ESQ.
 FLORIDA BAR NO. 188845
 MCCARTHY, SUMMERS, BOBKO, MCKEY, WOOD & SAWYER, P.A.
 2400 SOUTH FEDERAL HIGHWAY
 STUART, FLORIDA 34994

CITY COMMISSION APPROVAL

THIS PLAT IS HEREBY APPROVED BY THE UNDERSIGNED ON THE DATES INDICATED

DATE: 5/18/05 Michael Mortell
 CITY MAYOR: MICHAEL MORTELL
 DATE: 5/18/05 Cherie White
 CITY CLERK: CHERIE WHITE
 DATE: 5/18/05 Stephen Fry
 CITY ATTORNEY: STEPHEN FRY
 DATE: 3/12/05 Joseph Capra, P.E.
 CITY ENGINEER: JOSEPH CAPRA, P.E.
 PLAT REVIEWER: GREGORY FLEMING, P.S.M.



KEY MAP
 NOT TO SCALE

DESCRIPTION:
 ALL THAT CERTAIN LOT, TRACT, PARCEL OF LAND OR PREMISES, SITUATE AND LYING IN THE CITY OF STUART, BEING A PORTION OF SECTIONS 20 AND 29, TOWNSHIP 37 SOUTH, RANGE 41 EAST, ST. LUCIE GARDENS PLAT NO. 1, AS RECORDED IN PLAT BOOK 1, PAGE 35 OF THE PUBLIC RECORDS OF ST. LUCIE (NOW MARTIN) COUNTY, FLORIDA, BEING MORE PARTICULARLY DESCRIBED AS FOLLOWS:

BEGINNING AT THE NORTH QUARTER CORNER OF SECTION 29; THENCE PROCEED NORTH 00°09' 58" EAST, ALONG THE WEST LINE OF THE EAST HALF OF SECTION 20, A DISTANCE OF 202.06 FEET; THENCE SOUTH 22°26' 27" EAST, A DISTANCE OF 92.40 FEET; THENCE SOUTH 85°35' 03" EAST, A DISTANCE OF 64.88 FEET; THENCE SOUTH 42°13' 05" EAST, A DISTANCE OF 83.12 FEET; THENCE SOUTH 10°18' 28" WEST, A DISTANCE OF 107.00 FEET; THENCE SOUTH 25°04' 42" WEST, A DISTANCE OF 58.48 FEET; THENCE SOUTH 35°17' 50" WEST, A DISTANCE OF 35.64 FEET; TO A POINT ON A CURVE CONCAVE NORTHEASTERLY, HAVING A RADIUS OF 175.00 FEET; AND WHOSE RADIUS POINT BEARS NORTH 85°30' 13" WEST; THENCE SOUTHEASTERLY ALONG THE ARC OF SAID CURVE, THROUGH A CENTRAL ANGLE OF 105°23' 10", A DISTANCE OF 321.88 FEET TO THE END OF SAID CURVE; THENCE NORTH 20°08' 10" EAST, A DISTANCE OF 7.86 FEET; TO THE POINT OF CURVATURE OF A CURVE CONCAVE SOUTHEASTERLY, HAVING A RADIUS OF 25.00 FEET; THENCE NORTHEASTERLY ALONG THE ARC OF SAID CURVE, THROUGH A CENTRAL ANGLE OF 55°47' 00", A DISTANCE OF 24.34 FEET TO THE POINT OF TANGENCY; THENCE NORTH 75°55' 10" EAST, A DISTANCE OF 126.12 FEET; THENCE SOUTH 01°58' 27" WEST, A DISTANCE OF 178.20 FEET; THENCE SOUTH 25°57' 07" EAST, A DISTANCE OF 19.81 FEET; THENCE SOUTH 04°16' 50" EAST, A DISTANCE OF 74.45 FEET; THENCE SOUTH 20°34' 28" EAST, A DISTANCE OF 45.50 FEET; THENCE SOUTH 76°05' 09" EAST, A DISTANCE OF 56.58 FEET; THENCE SOUTH 31°57' 57" EAST, A DISTANCE OF 49.35 FEET; THENCE NORTH 62°35' 03" EAST, A DISTANCE OF 11.38 FEET; THENCE SOUTH 88°52' 03" EAST, A DISTANCE OF 132.33 FEET; TO THE POINT OF CURVATURE OF A CURVE CONCAVE SOUTHERLY, HAVING A RADIUS OF 275.0 FEET; THENCE EASTERLY ALONG THE ARC OF SAID CURVE, THROUGH A CENTRAL ANGLE OF 11°02' 29", A DISTANCE OF 52.99 FEET TO THE END OF SAID CURVE; THENCE NORTH 01°07' 58" EAST, A DISTANCE OF 406.60 FEET; THENCE SOUTH 88°52' 03" EAST, A DISTANCE OF 189.87 FEET; TO THE POINT OF CURVATURE OF A CURVE CONCAVE SOUTHWESTERLY, HAVING A RADIUS OF 175.00 FEET; THENCE SOUTHEASTERLY ALONG THE ARC OF SAID CURVE, THROUGH A CENTRAL ANGLE OF 58°18' 28", A DISTANCE OF 178.09 FEET TO THE POINT OF REVERSE CURVATURE OF A CURVE CONCAVE NORTHEASTERLY, HAVING A RADIUS OF 390.00 FEET; THENCE SOUTHEASTERLY ALONG THE ARC OF SAID CURVE, THROUGH A CENTRAL ANGLE OF 26°16' 18", A DISTANCE OF 178.83 FEET TO THE END OF SAID CURVE; THENCE SOUTH 01°51' 56" WEST, A DISTANCE OF 12.56 FEET; THENCE SOUTH 71°95' 02" WEST, A DISTANCE OF 72.55 FEET; THENCE NORTH 78°58' 55" WEST, A DISTANCE OF 46.60 FEET; THENCE SOUTH 68°24' 16" WEST, A DISTANCE OF 48.93 FEET; THENCE SOUTH 47°51' 35" WEST, A DISTANCE OF 52.47 FEET; THENCE SOUTH 32°00' 46" WEST, A DISTANCE OF 71.56 FEET; THENCE SOUTH 13°04' 41" WEST, A DISTANCE OF 23.46 FEET; THENCE SOUTH 51°38' 15" EAST, A DISTANCE OF 45.09 FEET; THENCE NORTH 71°23' 05" EAST, A DISTANCE OF 77.14 FEET; THENCE SOUTH 73°39' 51" EAST, A DISTANCE OF 82.62 FEET; THENCE SOUTH 44°27' 45" EAST, A DISTANCE OF 80.35 FEET; THENCE SOUTH 76°47' 29" EAST, A DISTANCE OF 109.56 FEET; THENCE SOUTH 16°26' 37" EAST, A DISTANCE OF 49.67 FEET; THENCE SOUTH 34°32' 46" WEST, A DISTANCE OF 104.21 FEET; THENCE SOUTH 47°16' 00" EAST, A DISTANCE OF 273.37 FEET; THENCE SOUTH 80°26' 37" EAST, A DISTANCE OF 203.75 FEET; THENCE NORTH 18°32' 03" EAST, A DISTANCE OF 13.05 FEET; THENCE NORTH 16°54' 23" WEST, A DISTANCE OF 6.83 FEET; THENCE NORTH 50°28' 51" WEST, A DISTANCE OF 54.80 FEET; THENCE NORTH 10°13' 44" WEST, A DISTANCE OF 102.22 FEET; THENCE NORTH 32°40' 55" WEST, A DISTANCE OF 106.85 FEET; THENCE NORTH 03°16' 36" EAST, A DISTANCE OF 112.77 FEET; THENCE NORTH 00°27' 15" EAST, A DISTANCE OF 114.18 FEET; THENCE NORTH 68°20' 44" EAST, A DISTANCE OF 103.41 FEET; THENCE NORTH 56°02' 27" EAST, A DISTANCE OF 6.20 FEET; TO A POINT ON A CURVE CONCAVE SOUTHWESTERLY, HAVING A RADIUS OF 375.0 FEET; AND WHOSE RADIUS POINT BEARS SOUTH 56°02' 29" WEST; THENCE SOUTHEASTERLY ALONG THE ARC OF SAID CURVE, THROUGH A CENTRAL ANGLE OF 02°17' 09", A DISTANCE OF 14.96 FEET TO THE POINT OF TANGENCY; THENCE SOUTH 31°40' 22" EAST, A DISTANCE OF 515.05 FEET; TO A POINT ON A CURVE CONCAVE EASTERLY, HAVING A RADIUS OF 175.00 FEET; AND WHOSE RADIUS POINT BEARS SOUTH 77°15' 22" EAST; THENCE SOUTHERLY ALONG THE ARC OF SAID CURVE, THROUGH A CENTRAL ANGLE OF 68°12' 34", A DISTANCE OF 208.32 FEET TO A POINT ON A CURVE CONCAVE EASTERLY, HAVING A RADIUS OF 170.0 FEET; AND WHOSE RADIUS POINT BEARS NORTH 63°21' 18" WEST; THENCE SOUTHERLY ALONG THE ARC OF SAID CURVE, THROUGH A CENTRAL ANGLE OF 09°49' 12", A DISTANCE OF 29.14 FEET TO THE POINT OF TANGENCY; THENCE SOUTH 16°49' 29" WEST, A DISTANCE OF 100.00 FEET; THENCE SOUTH 12°54' 00" WEST, A DISTANCE OF 137.47 FEET; THENCE SOUTH 56°39' 10" WEST, A DISTANCE OF 237.45 FEET; THENCE SOUTH 87°37' 29" WEST, A DISTANCE OF 471.30 FEET; THENCE NORTH 21°08' 18" WEST, A DISTANCE OF 159.87 FEET; THENCE NORTH 47°20' 23" WEST, A DISTANCE OF 116.99 FEET; THENCE NORTH 31°03' 28" WEST, A DISTANCE OF 168.00 FEET; TO THE POINT OF CURVATURE OF A CURVE CONCAVE SOUTHWESTERLY, HAVING A RADIUS OF 414.55 FEET; THENCE NORTHWESTERLY ALONG THE ARC OF SAID CURVE, THROUGH A CENTRAL ANGLE OF 50°45' 00", A DISTANCE OF 367.19 FEET TO THE END OF SAID CURVE; THENCE NORTH 81°47' 12" WEST, A DISTANCE OF 144.73 FEET; THENCE NORTH 81°51' 30" WEST, A DISTANCE OF 60.31 FEET; TO A POINT ON A CURVE CONCAVE WESTERLY, HAVING A RADIUS OF 1500. FEET; AND WHOSE RADIUS POINT BEARS NORTH 87°49' 51" WEST; THENCE SOUTHERLY ALONG THE ARC OF SAID CURVE, THROUGH A CENTRAL ANGLE OF 03°01' 23", A DISTANCE OF 79.14 FEET TO THE POINT OF TANGENCY; THENCE SOUTH 05°11' 01" WEST, A DISTANCE OF 1.72 FEET; THENCE SOUTH 45°43' 55" WEST, A DISTANCE OF 92.32 FEET; THENCE SOUTH 70°55' 48" WEST, A DISTANCE OF 130.94 FEET; THENCE NORTH 76°19' 57" WEST, A DISTANCE OF 93.40 FEET; THENCE NORTH 51°21' 40" WEST, A DISTANCE OF 68.95 FEET; THENCE NORTH 42°24' 16" WEST, A DISTANCE OF 156.90 FEET; THENCE NORTH 46°19' 40" EAST, A DISTANCE OF 98.78 FEET; THENCE NORTH 33°02' 59" EAST, A DISTANCE OF 66.08 FEET; THENCE NORTH 23°19' 11" WEST, A DISTANCE OF 85.94 FEET; THENCE NORTH 74°01' 33" WEST, A DISTANCE OF 198.84 FEET; THENCE NORTH 16°13' 02" EAST, A DISTANCE OF 153.73 FEET; TO A POINT ON A CURVE CONCAVE SOUTHERLY, HAVING A RADIUS OF 950.0 FEET; AND WHOSE RADIUS POINT BEARS SOUTH 18°03' 04" WEST; THENCE WESTERLY ALONG THE ARC OF SAID CURVE, THROUGH A CENTRAL ANGLE OF 05°16' 03", A DISTANCE OF 87.34 FEET TO THE POINT OF REVERSE CURVATURE OF A CURVE CONCAVE NORTHEASTERLY, HAVING A RADIUS OF 350.00 FEET; THENCE NORTHWESTERLY ALONG THE ARC OF SAID CURVE, THROUGH A CENTRAL ANGLE OF 23°16' 28", A DISTANCE OF 142.18 FEET TO THE END OF SAID CURVE; THENCE SOUTH 52°44' 25" WEST, A DISTANCE OF 128.98 FEET; TO A POINT ON A CURVE CONCAVE NORTHEASTERLY, HAVING A RADIUS OF 475.00 FEET; AND WHOSE RADIUS POINT BEARS NORTH 40°31' 44" EAST; THENCE NORTHWESTERLY ALONG THE ARC OF SAID CURVE, THROUGH A CENTRAL ANGLE OF 30°50' 15", A DISTANCE OF 255.65 FEET TO THE END OF SAID CURVE; THENCE NORTH 64°29' 16" WEST, A DISTANCE OF 73.85 FEET; THENCE NORTH 53°15' 46" WEST, A DISTANCE OF 43.94 FEET; THENCE NORTH 25°25' 35" WEST, A DISTANCE OF 23.40 FEET; THENCE NORTH 03°41' 04" WEST, A DISTANCE OF 127.72 FEET; THENCE NORTH 22°13' 02" WEST, A DISTANCE OF 69.06 FEET; THENCE NORTH 41°45' 37" EAST, A DISTANCE OF 165.07 FEET; THENCE SOUTH 89°57' 31" EAST, A DISTANCE OF 465.39 FEET; TO THE POINT OF BEGINNING.

CONTAINING IN ALL 1709709 SQ. FT. OR 39.250 ACRES, MORE OR LESS.

SUBJECT TO EASEMENTS, RESTRICTIONS, RESERVATIONS AND RIGHTS-OF-WAY OF RECORD.

PREPARED BY
**METES AND BOUNDS
 INC**
 LICENSED BUSINESS NO. 6793
 49 S.W. FLAGLER AVENUE,
 SUITE 2A, STUART, FLORIDA, 34994
 TELEPHONE (772) 221-9093
 DANIEL CHRISTIAN,
 PROFESSIONAL SURVEYOR AND MAPPER
 FLORIDA REGISTRATION # 4227
 SHEET NUMBER 1 OF 6

