

ST. LUCIE GARDENS, PLAT NO. 1, SECTION 20, BLOCK 3  
BOOK 1, PAGE 35, ST. LUCIE (NOW MARTIN) COUNTY, FLORIDA

NORTH LINE OF SECTION 29  
N 89°57'31" W 465.39'  
P.O.C. PLAT 5A  
N 89°39'04" W PER GORDON WETLAND SKETCH  
NORTH QUARTER CORNER SECTION 29/37/41

SUBDIVISION PARCEL CONTROL NUMBER  
Plat Book 16 Page 8

### PINEAPPLE PLANTATION PLAT 5A

LYING IN THE CITY OF STUART  
BEING A REPLAT OF A PORTION OF SECTION 29, TOWNSHIP 37 SOUTH, RANGE 41 EAST  
ST. LUCIE GARDENS PLAT NO. 1, AS RECORDED IN PLAT BOOK 1, PAGE 35 OF THE PUBLIC RECORDS OF  
ST. LUCIE (NOW MARTIN) COUNTY, FLORIDA.

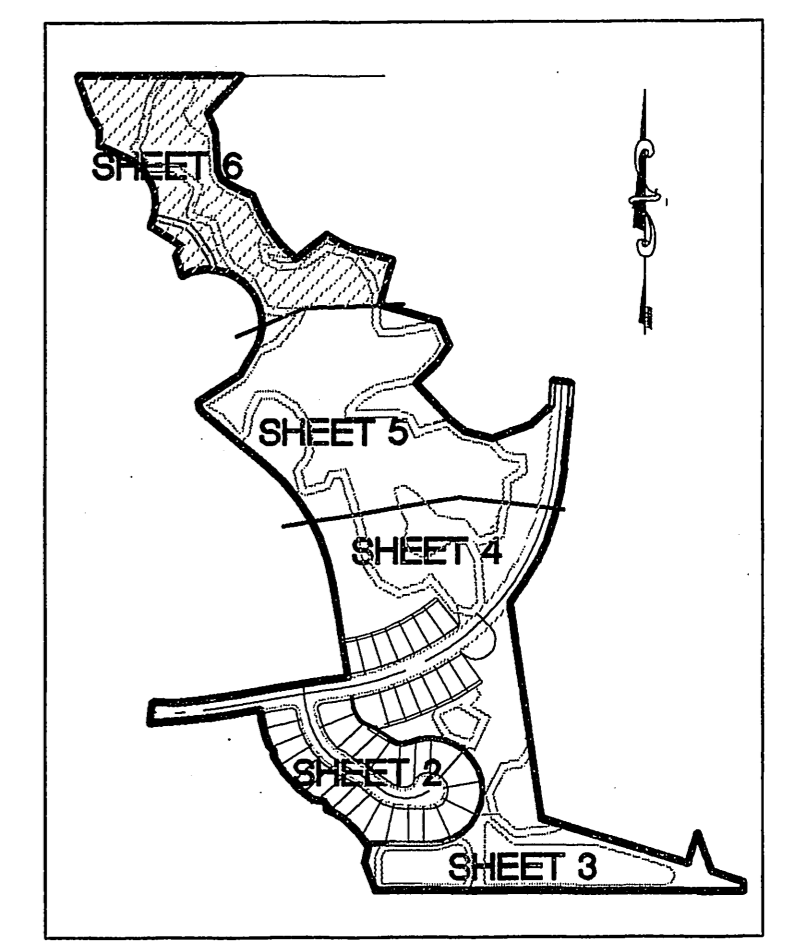
PINEAPPLE PLANTATION  
PLAT THREE  
PLAT BOOK 14, PAGE 27, ST. LUCIE  
(NOW MARTIN) COUNTY, FLORIDA

PINEAPPLE PLANTATION  
PLAT THREE  
PLAT BOOK 14, PAGE 27, ST. LUCIE  
(NOW MARTIN) COUNTY, FLORIDA

PINEAPPLE PLANTATION  
PLAT THREE  
PLAT BOOK 14, PAGE 27, ST. LUCIE  
(NOW MARTIN) COUNTY, FLORIDA

PINEAPPLE PLANTATION  
PLAT FOUR  
PLAT BOOK 14, PAGE 92, ST. LUCIE  
(NOW MARTIN) COUNTY, FLORIDA

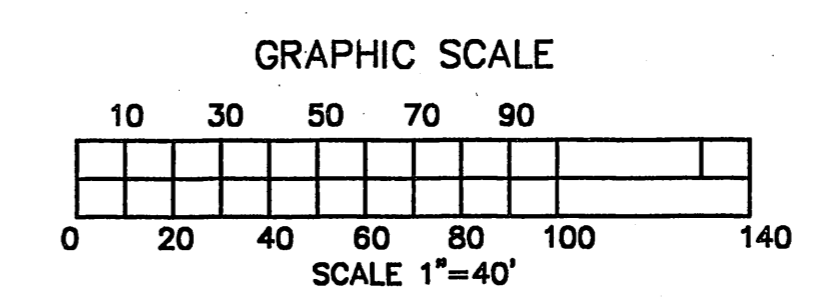
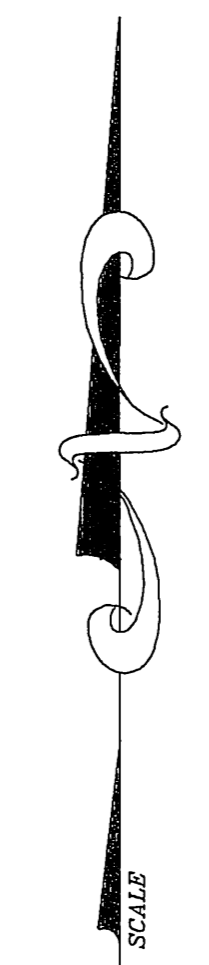
PINEAPPLE PLANTATION  
PLAT FOUR  
PLAT BOOK 14, PAGE 92, ST. LUCIE  
(NOW MARTIN) COUNTY, FLORIDA



KEY MAP  
1" = 400'

**LEGEND**

□	PERMANENT REFERENCE MONUMENT (PRM)	DE	DRAINAGE EASEMENT
△	PERMANENT CONTROL POINT (PCP)	UE	UTILITY EASEMENT
(NR)	DENOTES NON-RADIAL	R/W	RIGHT OF WAY
∠	CENTRAL ANGLE OF CURVE	NO.	NUMBER
D	CENTRAL ANGLE OF CURVE	PLS	PROFESSIONAL LAND SURVEYOR
POB	POINT OF BEGINNING		
POC	POINT OF COMMENCEMENT		
A	ARC LENGTH		
L	ARC LENGTH		
C	CHORD LENGTH		
CB	CHORD BEARING		
R	RADIUS		
CL	CENTER LINE		
RB	RADIAL BEARING		



**NOTES:**

1. THIS PLAT, AS RECORDED IN ITS ORIGINAL FORM IN THE PUBLIC RECORDS, IS THE OFFICIAL DEPICTION OF THE SUBDIVIDED LANDS DESCRIBED HEREON AND WILL IN NO CIRCUMSTANCES BE SUPPLANTED IN AUTHORITY BY ANY OTHER FORM OF THE PLAT, WHETHER GRAPHIC OR DIGITAL.
2. THERE MAY BE ADDITIONAL RESTRICTIONS THAT ARE NOT RECORDED ON THIS PLAT THAT MAY BE FOUND IN THE PUBLIC RECORDS OF THIS COUNTY.
3. WHERE DRAINAGE AND UTILITY EASEMENTS CROSS, DRAINAGE EASEMENTS SHALL TAKE PRECEDENCE.
4. BEARINGS ARE BASED ON AN ASSUMED DATUM ALONG THE NORTH LINE OF THE WEST QUARTER OF SAID SECTION 29 PER EDWIN MATTHEWS PLS #3954, BEARING N89°57'31"W AND ALL BEARINGS ARE RELATIVE THEREOF.
5. PROPERTY LIES WITHIN FLOOD ZONE "X", MAP NO. 12085C0132 F, COMMUNITY NO. 120165, EFFECTIVE DATE OCTOBER 4, 2002.
6. ALL WETLAND INFORMATION WAS DERIVED FROM LEGAL DESCRIPTIONS PREPARED BY GORDON AND ASSOCIATES LAND SURVEYORS, INC., PROVIDED TO ME BY PINEAPPLE PLANTATION JOINT VENTURE AND IN ACCORD WITH THOSE DOCUMENTS LISTED AS SHEETS 1-33 PREPARED BY SAID GORDON AND ASSOCIATES.
7. ALL LOT LINES ARE RADIAL UNLESS OTHERWISE NOTED.

ST. LUCIE GARDENS, PLAT NO. 1,  
SECTION 8, BLOCK 1  
PLAT BOOK 1, PAGE 35, ST. LUCIE  
(NOW MARTIN) COUNTY, FLORIDA

PREPARED BY  
**METES AND BOUNDS  
INC**

LICENSED BUSINESS NO. 6793  
49 S.W. FLAGLER AVENUE,  
SUITE 2A, STUART, FLORIDA, 34994  
TELEPHONE (772) 221-9093  
DANIEL CHRISTIAN,  
PROFESSIONAL SURVEYOR AND MAPPER  
FLORIDA REGISTRATION # 4227

**MATCH LINE**  
SEE SHEET 5 OF 6