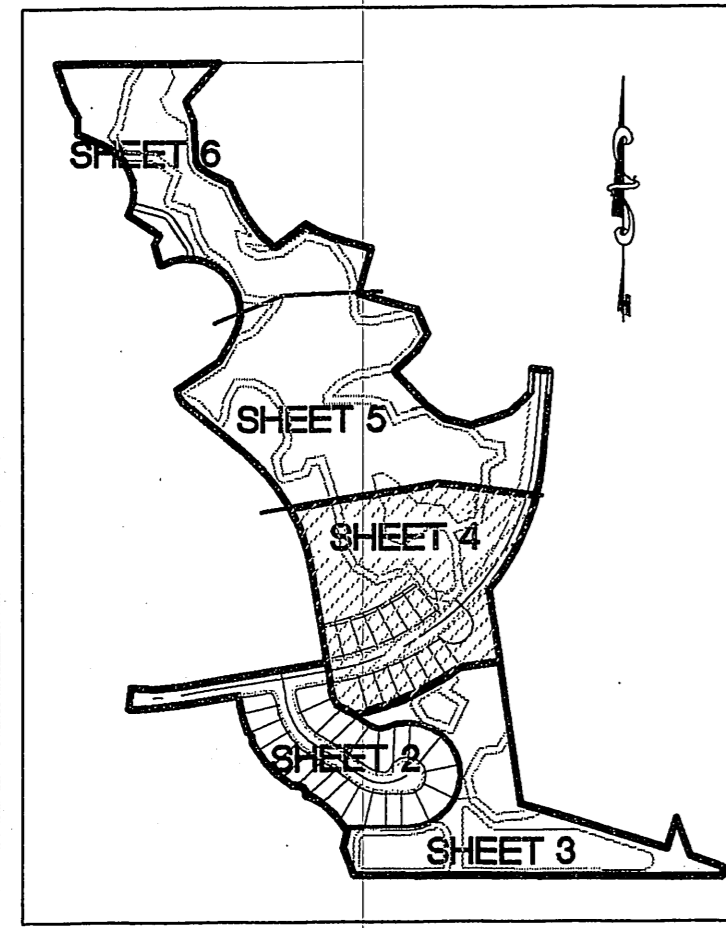


PINEAPPLE PLANTATION PLAT 5A

LYING IN THE CITY OF STUART
 BEING A REPLAT OF A PORTION OF SECTION 29, TOWNSHIP 37 SOUTH, RANGE 41 EAST
 ST. LUCIE GARDENS PLAT NO. 1, AS RECORDED IN PLAT BOOK 1, PAGE 35 OF THE PUBLIC RECORDS OF
 ST. LUCIE (NOW MARTIN) COUNTY, FLORIDA.

SUBDIVISION PARCEL CONTROL NUMBER
 Plat Book 16 Page 8



KEY MAP
 1" = 400'

PINEAPPLE PLANTATION
 PLAT FOUR
 PLAT BOOK 14, PAGE 92, ST. LUCIE
 (NOW MARTIN) COUNTY, FLORIDA

PINEAPPLE PLANTATION
 PLAT ONE
 PLAT BOOK 14, PAGE 4, ST. LUCIE
 (NOW MARTIN) COUNTY, FLORIDA

SEE SHEET
 2 OF 6

NOTES:

1. THIS PLAT, AS RECORDED IN ITS ORIGINAL FORM IN THE PUBLIC RECORDS, IS THE OFFICIAL DEPICTION OF THE SUBDIVIDED LANDS DESCRIBED HEREON AND WILL IN NO CIRCUMSTANCES BE SUPPLANTED IN AUTHORITY BY ANY OTHER FORM OF THE PLAT, WHETHER GRAPHIC OR DIGITAL.

2. THERE MAY BE ADDITIONAL RESTRICTIONS THAT ARE NOT RECORDED ON THIS PLAT THAT MAY BE FOUND IN THE PUBLIC RECORDS OF THIS COUNTY.

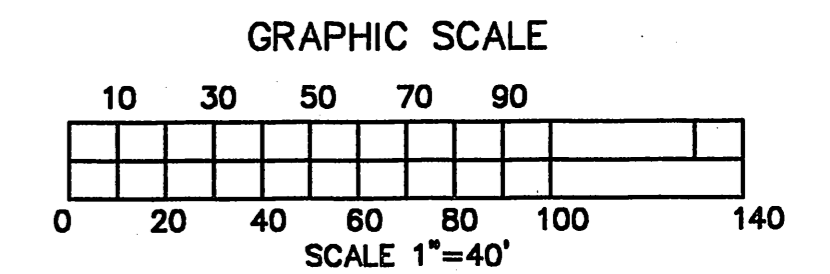
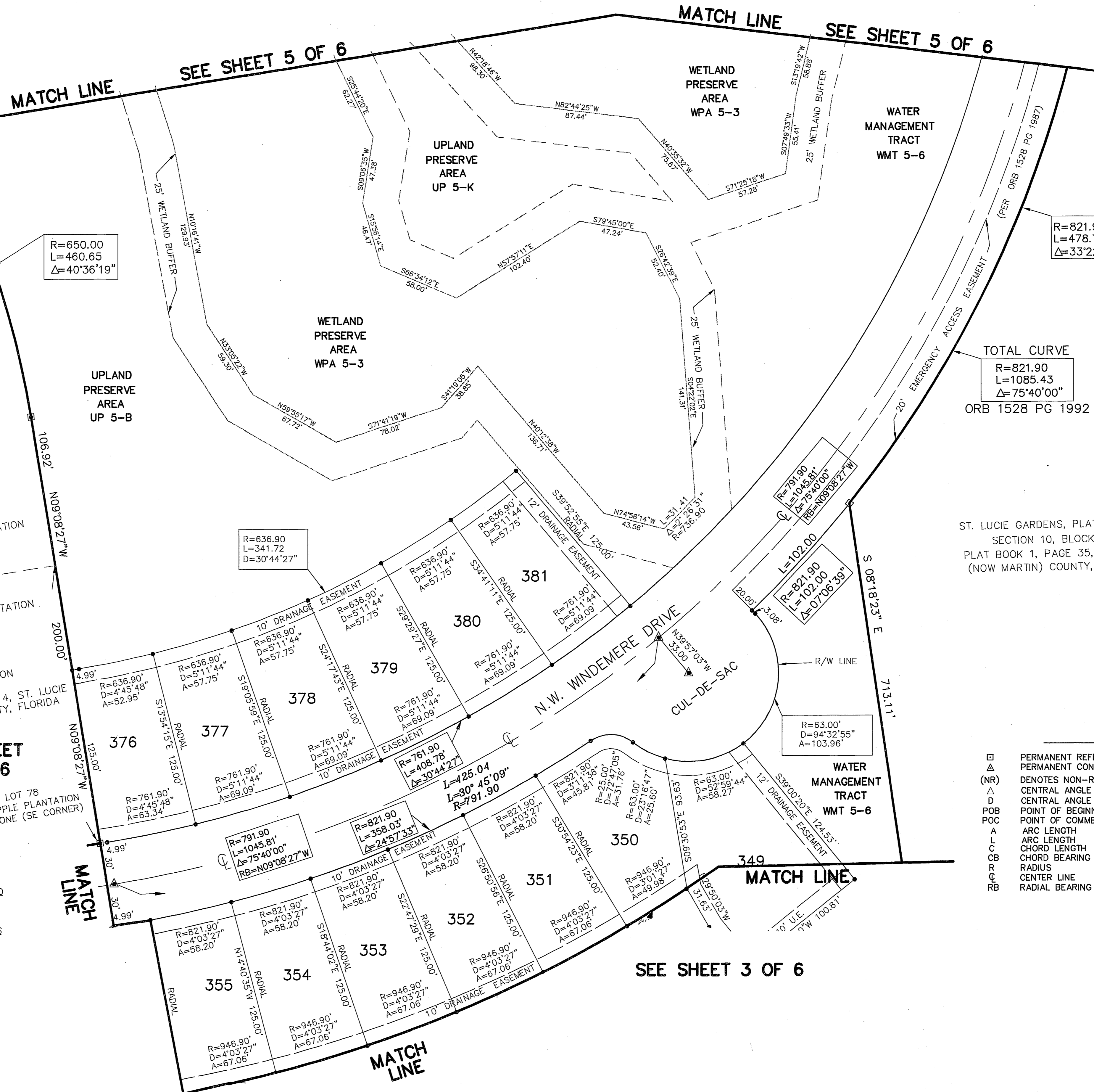
3. WHERE DRAINAGE AND UTILITY EASEMENTS CROSS, DRAINAGE EASEMENTS SHALL TAKE PRECEDENCE.

4. BEARINGS ARE BASED ON AN ASSUMED DATUM ALONG THE NORTH LINE OF THE WEST QUARTER OF SAID SECTION 29 PER EDWIN MATTHEWS PLS #3954 BEARING N89°57'31"W AND ALL BEARINGS ARE RELATIVE THEREOF

5. PROPERTY LIES WITHIN FLOOD ZONE "X", MAP NO. 12085C0132 F, COMMUNITY NO. 120165, EFFECTIVE DATE OCTOBER 4, 2002.

6. ALL WETLAND INFORMATION WAS DERIVED FROM LEGAL DESCRIPTIONS PREPARED BY GORDON AND ASSOCIATES LAND SURVEYORS, INC., PROVIDED TO ME BY PINEAPPLE PLANTATION JOINT VENTURE AND IN ACCORD WITH THOSE DOCUMENTS LISTED AS SHEETS 1-33 PREPARED BY SAID GORDON AND ASSOCIATES.

7. ALL LOT LINES ARE RADIAL UNLESS OTHERWISE NOTED.



ST. LUCIE GARDENS, PLAT NO. 1,
 SECTION 10, BLOCK 1
 PLAT BOOK 1, PAGE 35, ST. LUCIE
 (NOW MARTIN) COUNTY, FLORIDA

LEGEND

- PERMANENT REFERENCE MONUMENT (PRM)
- △ PERMANENT CONTROL POINT (PCP)
- (NR) DENOTES NON-RADIAL
- △ CENTRAL ANGLE OF CURVE
- △ CENTRAL ANGLE OF CURVE
- POB POINT OF BEGINNING
- POC POINT OF COMMENCEMENT
- A ARC LENGTH
- L CHORD LENGTH
- CB CHORD BEARING
- R RADIUS
- CL CENTER LINE
- RB RADIAL BEARING
- DE DRAINAGE EASEMENT
- UE UTILITY EASEMENT
- R/W RIGHT OF WAY
- NO. NUMBER
- PLS PROFESSIONAL LAND SURVEYOR

PREPARED BY
**METES AND BOUNDS
 INC**
 LICENSED BUSINESS NO. 6793
 49 S.W. FLAGLER AVENUE,
 SUITE 2A, STUART, FLORIDA, 34994
 TELEPHONE (772) 221-9093
 DANIEL CHRISTIAN,
 PROFESSIONAL SURVEYOR AND MAPPER
 FLORIDA REGISTRATION # 4227