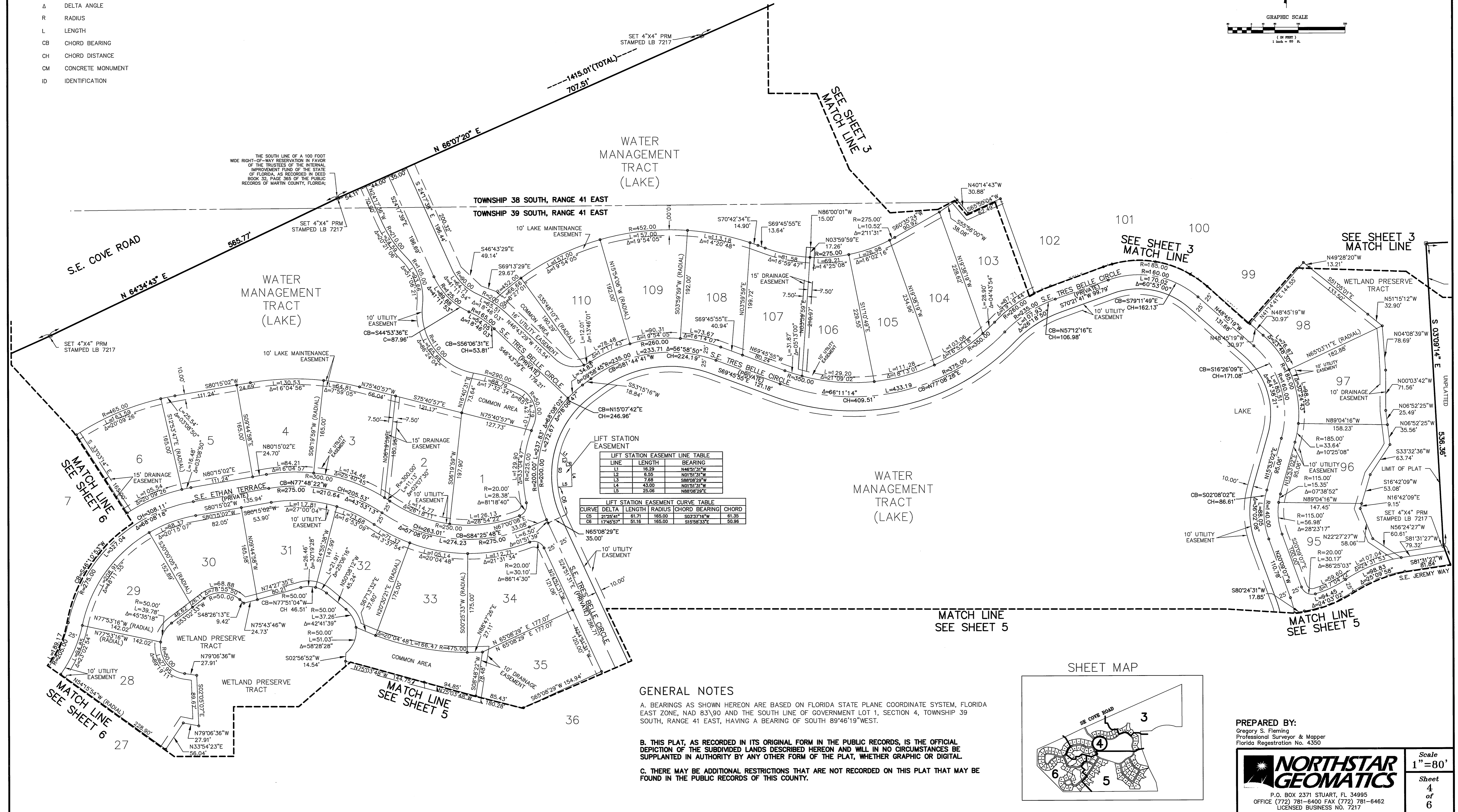
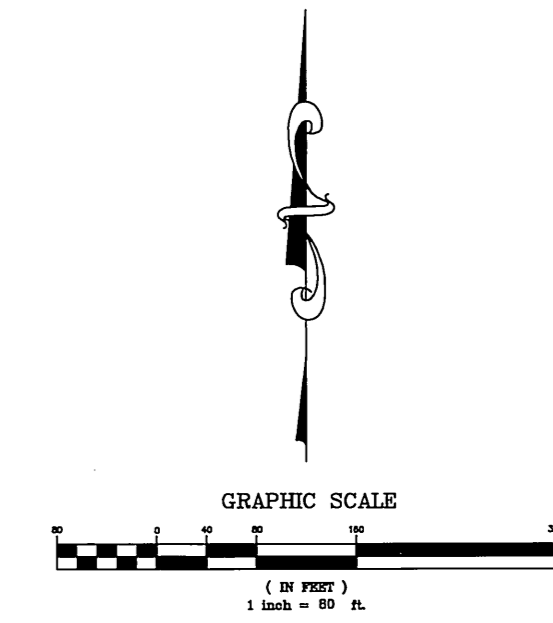


A PLAT OF TRES BELLE P.U.D. PLAT NO. 1

BEING A REPLAT OF A PORTION OF WRIGHTS MINOR PLAT, AS
RECORDED IN PLAT BOOK 6, PAGE 19, MARTIN COUNTY,
FLORIDA PUBLIC RECORDS
AND ALSO BEING A PORTION OF LAND LYING IN
SECTION 4, TOWNSHIP 39 SOUTH, RANGE 41 EAST
AND SECTION 33, TOWNSHIP 38 SOUTH, RANGE 41 EAST,
MARTIN COUNTY, FLORIDA

LEGEND

- INDICATES SET 5/8" IRON ROD & CAP "LB 7217"
- INDICATES NAIL & DISK "LB 7217" (PCP)
- INDICATES SET 4" X 4" CONCRETE MONUMENT WITH ALUMINUM DISK STAMPED "LB 7217" (PRM)
- P.U.D. PLANNED UNIT DEVELOPMENT
- PCP PERMANENT CONTROL POINT
- PRM PERMANENT REFERENCE MONUMENT
- LB LICENSED BUSINESS
- Δ DELTA ANGLE
- R RADIUS
- L LENGTH
- CB CHORD BEARING
- CH CHORD DISTANCE
- CM CONCRETE MONUMENT
- ID IDENTIFICATION



LIFT STATION EASEMENT LINE TABLE

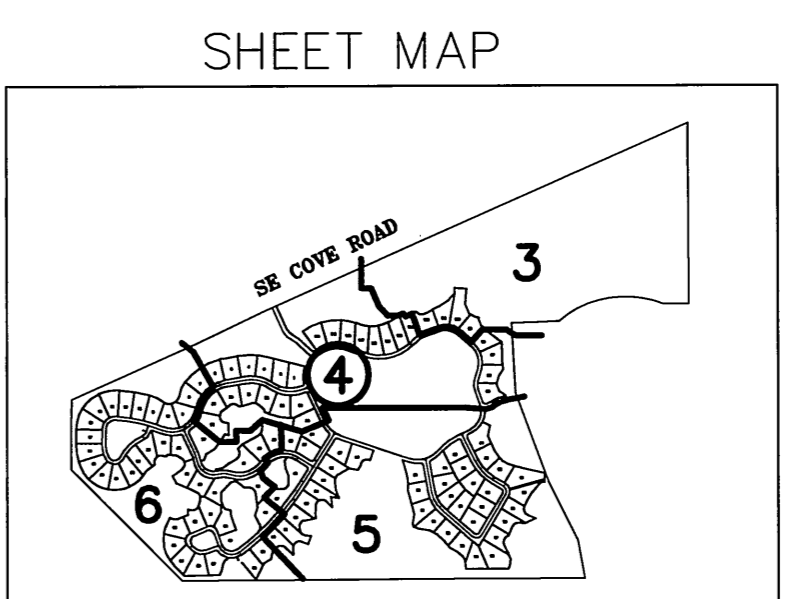
LINE	LENGTH	BEARING
L1	16.29	N46°31'31"W
L2	6.36	N01°31'31"W
L3	7.68	S89°02'00"W
L4	43.00	N01°31'31"W
L5	28.08	N88°08'29"E

LIFT STATION EASEMENT CURVE TABLE

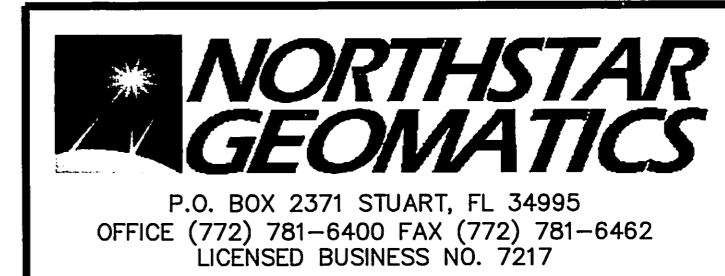
CURVE	DELTA	LENGTH	RADIUS	CHORD BEARING	CHORD
CB	71°28'41"	61.71	165.00	S03°37'16"W	61.35
CH	174°52'52"	51.16	165.00	S19°58'33"E	50.95

GENERAL NOTES

- A. BEARINGS AS SHOWN HEREON ARE BASED ON FLORIDA STATE PLANE COORDINATE SYSTEM, FLORIDA EAST ZONE, NAD 83/90 AND THE SOUTH LINE OF GOVERNMENT LOT 1, SECTION 4, TOWNSHIP 39 SOUTH, RANGE 41 EAST, HAVING A BEARING OF SOUTH 89°46'19" WEST.
- B. THIS PLAT, AS RECORDED IN ITS ORIGINAL FORM IN THE PUBLIC RECORDS, IS THE OFFICIAL DEPICTION OF THE SUBDIVIDED LANDS DESCRIBED HEREON AND WILL IN NO CIRCUMSTANCES BE SUPPLANTED IN AUTHORITY BY ANY OTHER FORM OF THE PLAT, WHETHER GRAPHIC OR DIGITAL.
- C. THERE MAY BE ADDITIONAL RESTRICTIONS THAT ARE NOT RECORDED ON THIS PLAT THAT MAY BE FOUND IN THE PUBLIC RECORDS OF THIS COUNTY.



PREPARED BY:
Gregory S. Fleming
Professional Surveyor & Mapper
Florida Registration No. 4350



Scale
1" = 80'
Sheet
4
of
6