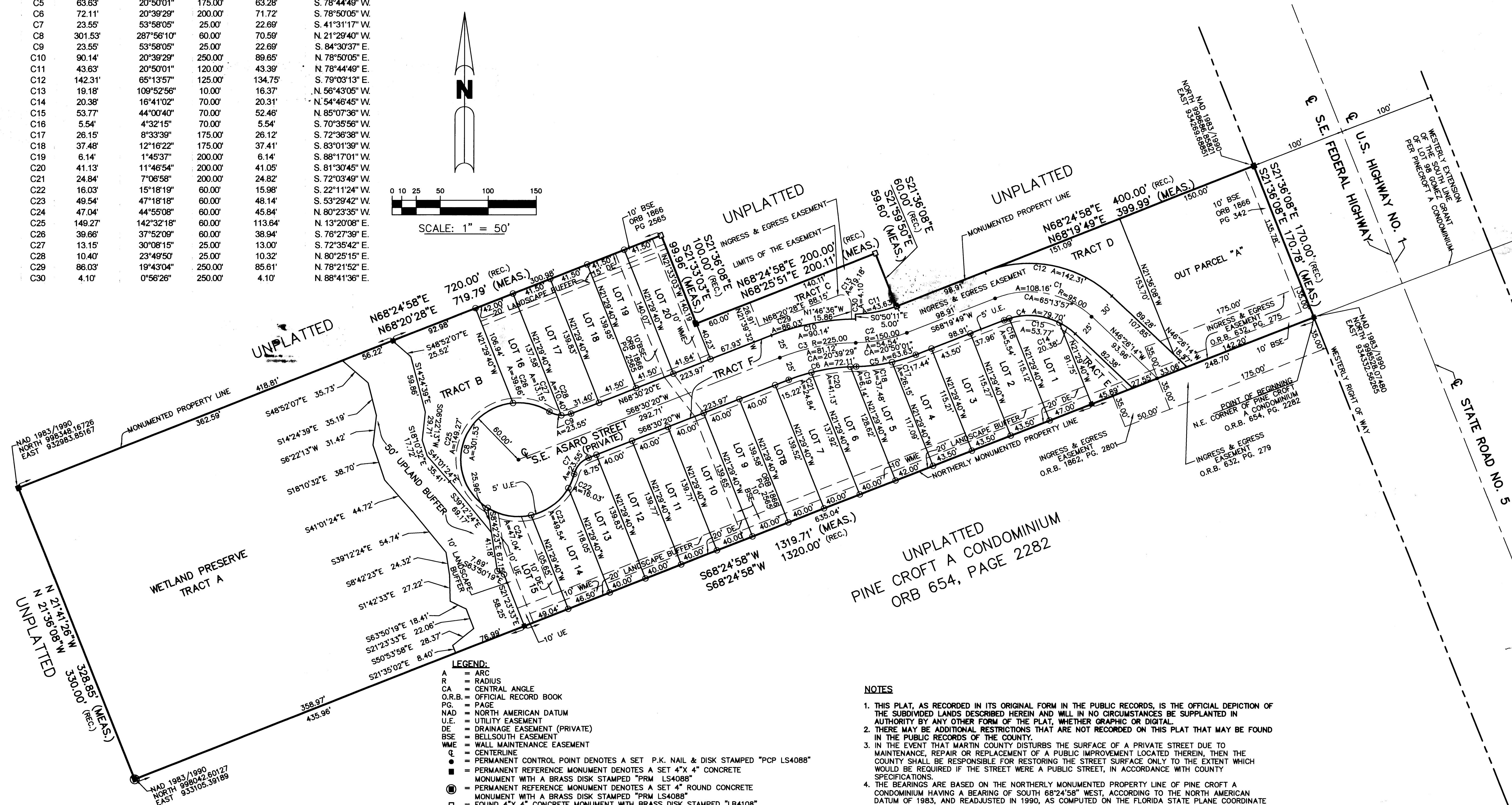
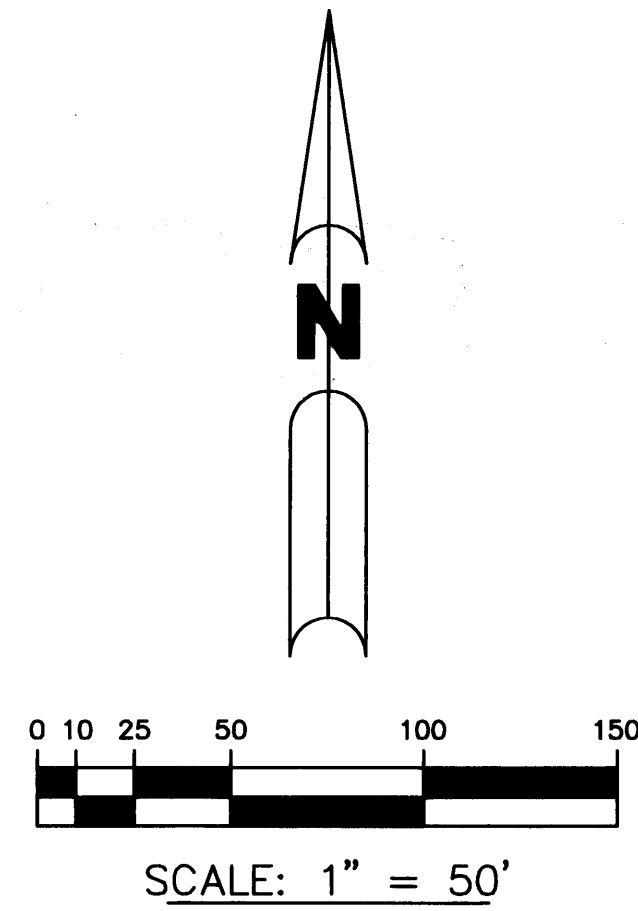


**A PLAT OF  
GOMEZ HILL SUBDIVISION**  
LYING IN THE GOMEZ GRANT  
BEING A REPLAT OF A PORTION OF THE PLAT OF GOMEZ GRANT AND JUPITER ISLAND  
AS RECORDED IN PLAT BOOK 1, PAGE 80  
ALL IN THE PUBLIC RECORDS OF MARTIN COUNTY, FLORIDA  
JUNE 2004

CURVE	ARC DISTANCE	CENTRAL ANGLE	RADIUS	CHORD DISTANCE	CHORD BEARING
C1	108.16'	65°13'57"	95.00'	102.41'	N. 79°03'13" W.
C2	54.54'	20°50'01"	150.00'	54.24'	S. 78°44'49" W.
C3	81.12'	20°39'29"	225.00'	80.69'	S. 78°50'05" W.
C4	79.70'	65°13'57"	70.00'	75.46'	N. 79°03'13" W.
C5	63.63'	20°50'01"	175.00'	63.28'	S. 78°44'49" W.
C6	72.11'	20°39'29"	200.00'	71.72'	S. 78°50'05" W.
C7	23.55'	53°58'05"	25.00'	22.69'	S. 41°31'17" W.
C8	301.53'	287°56'10"	60.00'	70.59'	N. 21°29'40" W.
C9	23.55'	53°58'05"	25.00'	22.69'	S. 84°30'37" E.
C10	90.14'	20°39'29"	250.00'	89.65'	N. 78°50'05" E.
C11	43.63'	20°50'01"	120.00'	43.39'	N. 78°44'49" E.
C12	142.31'	65°13'57"	125.00'	134.75'	S. 79°03'13" E.
C13	19.18'	109°52'56"	10.00'	16.37'	N. 56°43'05" W.
C14	20.38'	16°41'02"	70.00'	20.31'	N. 54°46'45" W.
C15	53.77'	44°00'40"	70.00'	52.46'	N. 85°07'36" W.
C16	5.54'	4°32'15"	70.00'	5.54'	S. 70°35'56" W.
C17	26.15'	8°33'39"	175.00'	26.12'	S. 72°36'38" W.
C18	37.48'	12°16'22"	175.00'	37.41'	S. 83°01'39" W.
C19	6.14'	1°45'37"	200.00'	6.14'	S. 88°17'01" W.
C20	41.13'	11°46'54"	200.00'	41.05'	S. 81°30'45" W.
C21	24.84'	7°06'58"	200.00'	24.82'	S. 72°03'49" W.
C22	16.03'	15°18'19"	60.00'	15.98'	S. 22°11'24" W.
C23	49.54'	47°18'18"	60.00'	48.14'	S. 53°29'42" W.
C24	47.04'	44°55'08"	60.00'	45.84'	N. 80°23'35" W.
C25	149.27'	142°32'18"	60.00'	113.64'	N. 13°20'08" E.
C26	39.66'	37°52'09"	60.00'	38.94'	S. 76°27'39" E.
C27	13.15'	30°08'15"	25.00'	13.00'	S. 72°35'42" E.
C28	10.40'	23°49'50"	25.00'	10.32'	N. 80°25'15" E.
C29	86.03'	19°43'04"	250.00'	85.61'	N. 78°21'52" E.
C30	4.10'	0°56'26"	250.00'	4.10'	N. 88°41'36" E.



- LEGEND:**
- A = ARC
  - R = RADIUS
  - CA = CENTRAL ANGLE
  - O.R.B. = OFFICIAL RECORD BOOK
  - PG. = PAGE
  - NAD = NORTH AMERICAN DATUM
  - U.E. = UTILITY EASEMENT
  - DE = DRAINAGE EASEMENT (PRIVATE)
  - BSE = BELLSOUTH EASEMENT
  - WME = WALL MAINTENANCE EASEMENT
  - CL = CENTERLINE
  - = PERMANENT CONTROL POINT DENOTES A SET P.K. NAIL & DISK STAMPED "PCP LS4088"
  - = PERMANENT REFERENCE MONUMENT DENOTES A SET 4" X 4" CONCRETE MONUMENT WITH A BRASS DISK STAMPED "PRM LS4088"
  - ⊙ = PERMANENT REFERENCE MONUMENT DENOTES A SET 4" ROUND CONCRETE MONUMENT WITH A BRASS DISK STAMPED "PRM LS4088"
  - = FOUND 4" X 4" CONCRETE MONUMENT WITH BRASS DISK STAMPED "LB4108"
  - = FOUND 4" X 4" CONCRETE MONUMENT (NO IDENTIFICATION NUMBER)
  - LS = PROFESSIONAL SURVEYOR AND MAPPER
  - LB = SURVEYING AND MAPPING BUSINESS
  - LS4088 = PROFESSIONAL SURVEYOR AND MAPPER LICENSE NUMBER FOR JAY ALAN BONNER
  - LB4725 = SURVEYING AND MAPPING BUSINESS LICENSE NUMBER FOR SUNSHINE SURVEYORS
  - LB4108 = SURVEYING AND MAPPING BUSINESS LICENSE NUMBER FOR GCY, INC.
  - REC. = RECORD
  - MEAS. = MEASURED
  - = DENOTES LOT CORNER 5/8" IRON ROD AND CAP STAMPED LS 4088

- NOTES**
- THIS PLAT, AS RECORDED IN ITS ORIGINAL FORM IN THE PUBLIC RECORDS, IS THE OFFICIAL DEPICTION OF THE SUBDIVIDED LANDS DESCRIBED HEREIN AND WILL IN NO CIRCUMSTANCES BE SUPPLANTED IN AUTHORITY BY ANY OTHER FORM OF THE PLAT, WHETHER GRAPHIC OR DIGITAL.
  - THERE MAY BE ADDITIONAL RESTRICTIONS THAT ARE NOT RECORDED ON THIS PLAT THAT MAY BE FOUND IN THE PUBLIC RECORDS OF THE COUNTY.
  - IN THE EVENT THAT MARTIN COUNTY DISTURBS THE SURFACE OF A PRIVATE STREET DUE TO MAINTENANCE, REPAIR OR REPLACEMENT OF A PUBLIC IMPROVEMENT LOCATED THEREIN, THEN THE COUNTY SHALL BE RESPONSIBLE FOR RESTORING THE STREET SURFACE ONLY TO THE EXTENT WHICH WOULD BE REQUIRED IF THE STREET WERE A PUBLIC STREET, IN ACCORDANCE WITH COUNTY SPECIFICATIONS.
  - THE BEARINGS ARE BASED ON THE NORTHERLY MONUMENTED PROPERTY LINE OF PINE CROFT A CONDOMINIUM HAVING A BEARING OF SOUTH 68°24'58" WEST, ACCORDING TO THE NORTH AMERICAN DATUM OF 1983, AND READJUSTED IN 1990, AS COMPUTED ON THE FLORIDA STATE PLANE COORDINATE SYSTEM.

THIS INSTRUMENT WAS PREPARED BY JAY ALAN BONNER, LS 4088  
IN THE OFFICE OF SUNSHINE SURVEYORS, 7592 159th COURT NORTH,  
PALM BEACH GARDENS, FLORIDA 33418

**SUNSHINE SURVEYORS**  
PO Box 31224 (LB4725)  
Palm Beach Gardens  
Florida 33420-1224

**SHEET  
2 OF 2**