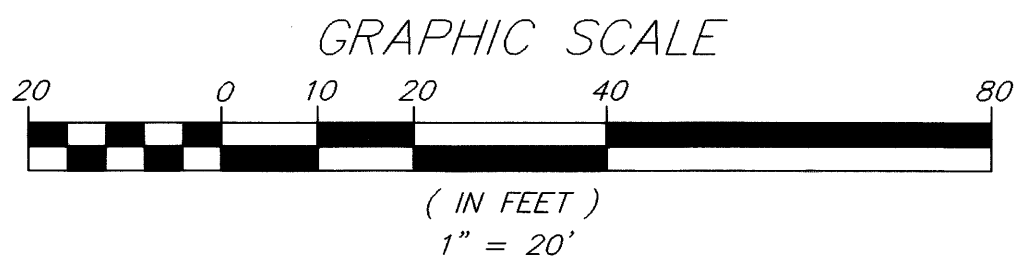


NOTICE:
 THIS PLAT, AS RECORDED IN ITS GRAPHIC FORM, IS THE OFFICIAL DEPICTION OF THE SUBDIVIDED LANDS DESCRIBED HEREIN AND WILL IN NO CIRCUMSTANCES BE SUPPLANTED IN AUTHORITY BY ANY OTHER GRAPHICAL OR DIGITAL FORM OF PLAT. THERE MAY BE ADDITIONAL RESTRICTIONS THAT ARE NOT RECORDED ON THIS PLAT THAT MAY BE FOUND IN THE PUBLIC RECORDS OF THIS COUNTY.



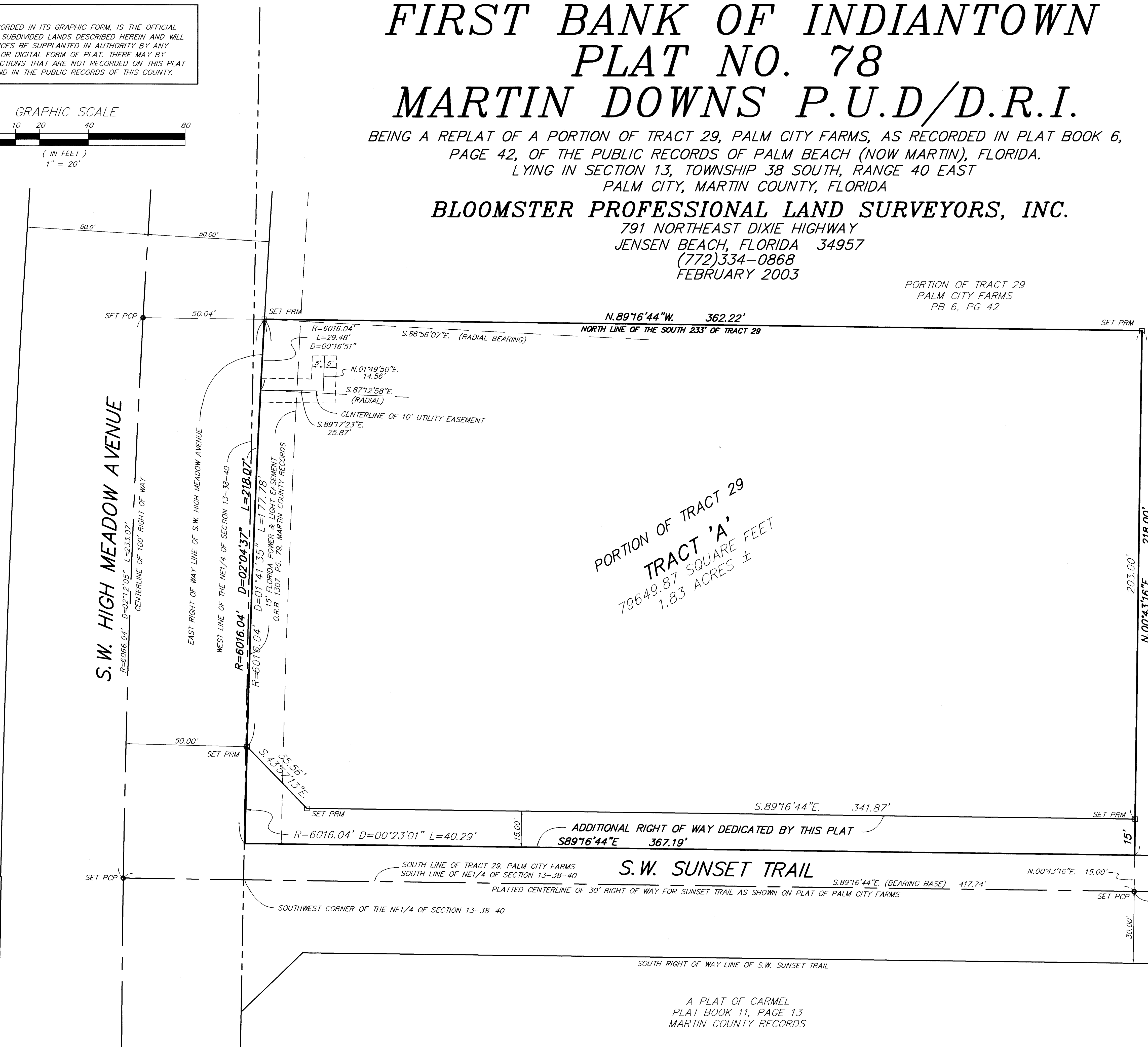
FIRST BANK OF INDIANTOWN PLAT NO. 78 MARTIN DOWNS P.U.D./D.R.I.

BEING A REPLAT OF A PORTION OF TRACT 29, PALM CITY FARMS, AS RECORDED IN PLAT BOOK 6, PAGE 42, OF THE PUBLIC RECORDS OF PALM BEACH (NOW MARTIN), FLORIDA.
 LYING IN SECTION 13, TOWNSHIP 38 SOUTH, RANGE 40 EAST
 PALM CITY, MARTIN COUNTY, FLORIDA

BLOOMSTER PROFESSIONAL LAND SURVEYORS, INC.
 791 NORTHEAST DIXIE HIGHWAY
 JENSEN BEACH, FLORIDA 34957
 (772)334-0868
 FEBRUARY 2003

PORTION OF TRACT 29
 PALM CITY FARMS
 PB 6, PG 42

WELLESLEY AT SUNSET TRACE PHASE I
 PLAT BOOK 10, PAGE 80
 MARTIN COUNTY RECORDS



PORTION OF TRACT 29
TRACT 'A'
 79649.87 SQUARE FEET
 1.83 ACRES ±

ADDITIONAL RIGHT OF WAY DEDICATED BY THIS PLAT
 $S89^{\circ}16'44''E$ 367.19'

S.W. SUNSET TRAIL

A PLAT OF CARMEL
 PLAT BOOK 11, PAGE 13
 MARTIN COUNTY RECORDS

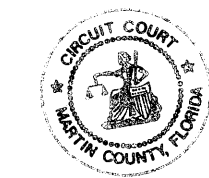
CLERK'S RECORDING CERTIFICATE:

I, MARSHA EWING, CLERK OF THE CIRCUIT COURT OF MARTIN COUNTY, FLORIDA, HEREBY CERTIFY THAT THIS PLAT WAS FILED FOR RECORD IN PLAT BOOK 12, PAGE 83, MARTIN COUNTY, FLORIDA, PUBLIC RECORDS, THIS 16 DAY OF March, 2003.

MARSHA EWING, CLERK
 CIRCUIT COURT
 MARTIN COUNTY, FLORIDA

BY: Sammy S. Casus
 DEPUTY CLERK (CIRCUIT COURT SEAL)

FILE NO. 1739e31



SUBDIVISION PARCEL CONTROL NUMBER:

SURVEYOR'S NOTES:

1. THERE SHALL BE NO BUILDING OR ANY OTHER KIND OF CONSTRUCTION, OR PLACEMENT OF TREES OR SHRUBS ON DRAINAGE EASEMENTS.
2. THERE SHALL BE NO BUILDING OR ANY PERMANENT STRUCTURES PLACED ON UTILITY EASEMENTS.
3. BEARINGS SHOWN HEREON ARE REFERENCED TO THE SOUTH LINE OF TRACT 29 ($S.89^{\circ}16'44''E$.)
4. THIS PROPERTY IS LOCATED IN FLOOD ZONE 'X' ACCORDING TO THE FLOOD INSURANCE RATE MAP (FIRM) COMMUNITY PANEL NO. 120161-0145-F, DATED: OCTOBER 4, 2002.
5. NO SEARCH OF THE PUBLIC RECORDS HAS BEEN MADE BY THIS OFFICE.
6. LEGEND AND ABBREVIATIONS:
 □ P.R.M. = DENOTES PERMANENT REFERENCE MONUMENT, SET 4"x4" CONCRETE MONUMENTS WITH DISC (PLS 4134)
 ○ P.C.P. = DENOTES PERMANENT CONTROL POINT, SET MAG NAIL & DISC (PLS 4134)
 PLS = PROFESSIONAL LAND SURVEYOR
 R = RADIUS
 L = LENGTH
 D = DELTA
 PB = PLAT BOOK
 PG = PAGE
 ORB = OFFICIAL RECORDS BOOK
 PUD = PLANNED UNIT DEVELOPMENT

PORTION OF TRACT 29
 PALM CITY FARMS
 PB 6, PG 42



POINT OF COMMENCEMENT
 S.E. CORNER OF TRACT 29