

UNINCORPORATED MARTIN COUNTY

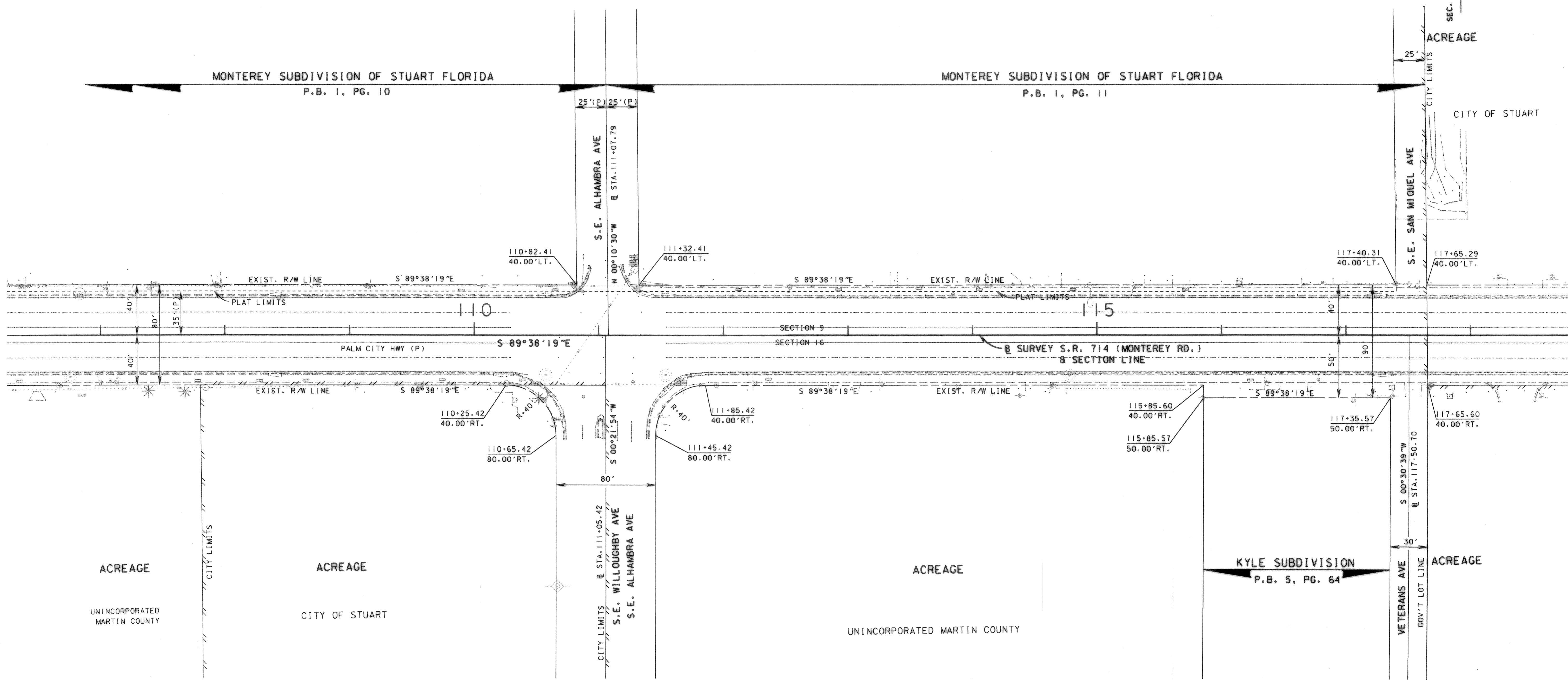
SEC. 9, 16, TWP. 38 S., RGE. 41 E.

ACREAGE

CITY OF STUART

MONTEREY SUBDIVISION OF STUART FLORIDA
P.B. 1, PG. 10

MONTEREY SUBDIVISION OF STUART FLORIDA
P.B. 1, PG. 11



ACREAGE
UNINCORPORATED
MARTIN COUNTY

ACREAGE
CITY OF STUART

ACREAGE
UNINCORPORATED MARTIN COUNTY

KYLE SUBDIVISION
P.B. 5, PG. 64

ACREAGE

SEE SHEET ONE FOR LEGEND AND GENERAL NOTES

S.R. 714 (MONTEREY ROAD) FROM S.W. PALM CITY ROAD TO S.R. 5 (U.S. 1-FEDERAL HIGHWAY)

MAINTENANCE MAP

FLORIDA DEPARTMENT OF TRANSPORTATION
RIGHT OF WAY MAPPING

APPROVED BY
Jeffrey S. Smith
DATE 11/22/03
DISTRICT RIGHT OF WAY SURVEYOR

REVISION	BY	DATE	REVISION	BY	DATE

	BY	DATE
PRELIM	MORAVA	03-17-03
FINAL	MORAVA	03-31-03
CHECKED	BROWN	06-25-03

FED. PROJ. NO. N/A
STATE ROAD NO. 714

SECTION 89092-MAINT.(1)
MARTIN COUNTY

MAPS PREPARED BY
F.D.O.T. DISTRICT 4
W.P.I. NO. N/A
ITEM/SEGMENT NO. 2288621

FIELD BOOK NO.'S
SCALE: 1" = 40'
SHEET 5 OF 8