

**LEGEND**

- PK = PARKER KALON NAIL & WASHER W/ PSM 4049
- CM = CONCRETE MONUMENT
- IB = SET 5/8" IRON BAR & CAP #4049
- P.R.M. = PERMANENT REFERENCE MONUMENT CM WITH DISK, PRM # 4049
- P.C.P. = PERMANENT CONTROL POINT SET PK
- CA = COMMON AREA
- AE & UE = ACCESS & UTILITY EASEMENT
- DE = DRIVEWAY EASEMENT
- R = RADIUS
- L = LENGTH
- D = DELTA
- O = SET P.C.P.
- = SET P.R.M.
- = SET IB
- ORB = OFFICIAL RECORD BOOK
- PG = PAGE

# A PLAT OF HAMILTON PLACE

BEING A PORTION OF SECTION 7,  
TOWNSHIP 38 SOUTH, RANGE 41 EAST,  
MARTIN COUNTY, FLORIDA.

DATE: MAY, 2003

THE CROSSINGS  
PLAT BOOK 8, PAGE 71  
MARTIN COUNTY, FLORIDA.

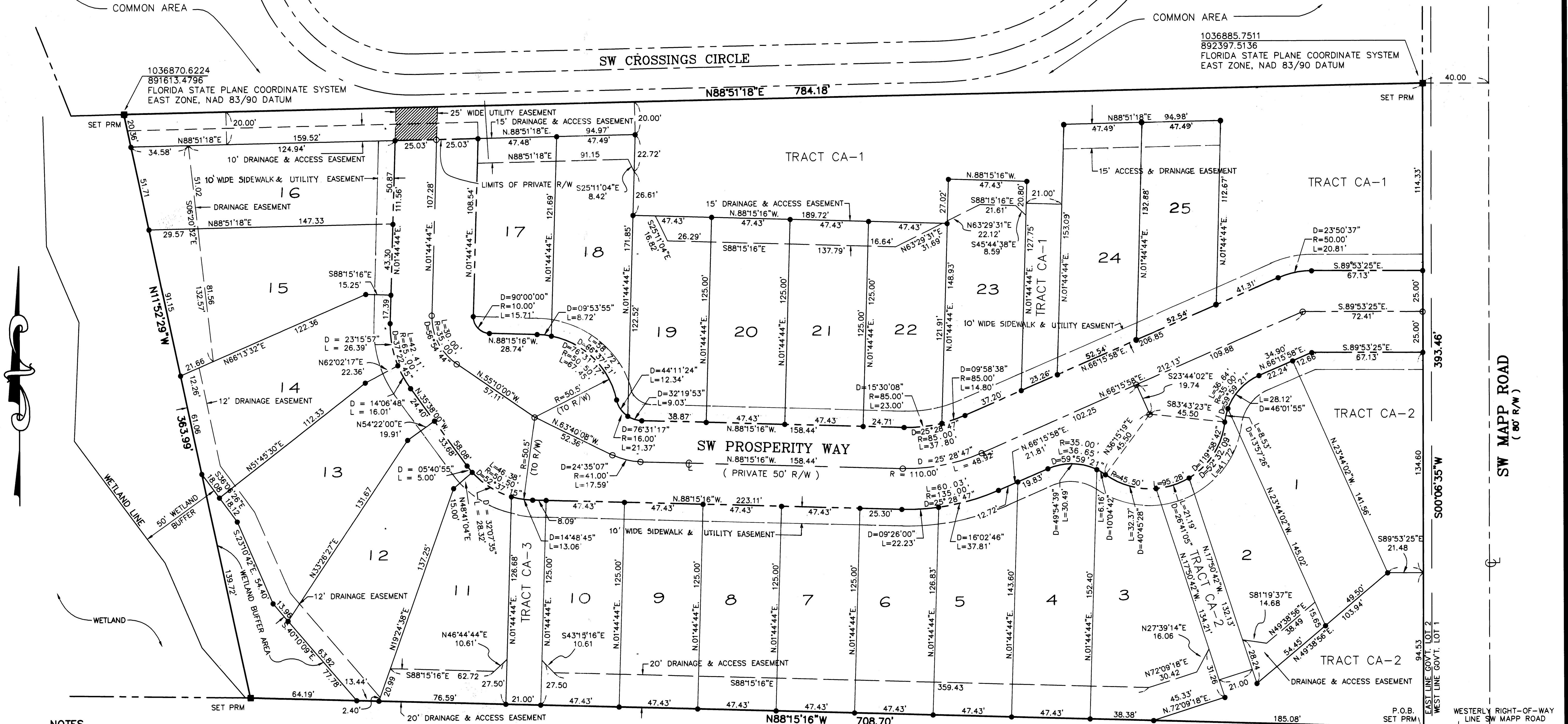
CLERK'S RECORDING CERTIFICATE

I, Marsha Ewing, Clerk of the Circuit Court of Martin County, Florida, hereby certify that this plat was filed for record in Plat Book 15, Page 70, Martin County, Florida, Public Records, this \_\_\_ day of \_\_\_, 20\_\_.

Marsha Ewing  
Circuit Court  
Martin County, Florida  
Deputy Clerk  
(Circuit Court Seal)

File No. \_\_\_\_\_

SUBDIVISION PARCEL CONTROL NUMBER

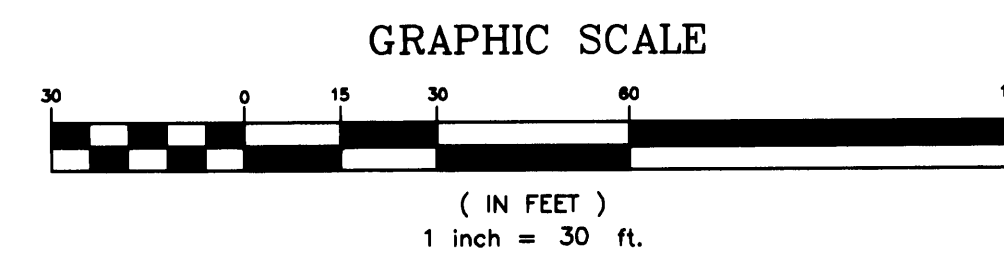


1036885.7511  
892397.5136  
FLORIDA STATE PLANE COORDINATE SYSTEM  
EAST ZONE, NAD 83/90 DATUM

**NOTES**

1. THIS PLAT, AS RECORDED IN ITS ORIGINAL FORM IN THE PUBLIC RECORDS, IS THE OFFICIAL DEPICTION OF THE SUBDIVIDED LANDS DESCRIBED HEREON AND WILL IN NO CIRCUMSTANCES BE SUPPLANTED IN AUTHORITY BY ANY OTHER FORM OF THE PLAT, WHETHER GRAPHIC OR DIGITAL.
2. THERE MAY BE ADDITIONAL RESTRICTIONS THAT ARE NOT RECORDED ON THIS PLAT THAT MAY BE FOUND IN THE PUBLIC RECORDS OF THIS COUNTY.
3. THE SURVEY BEARINGS SHOWN HEREON ARE REFERENCED TO THE WESTERLY RIGHT-OF-WAY LINE OF SW MAPP ROAD, DESCRIBED AS NORTH 00°06'35" EAST, ALL OTHERS RELATIVE THERETO.
4. THE NATIONAL FLOOD INSURANCE PROGRAM DESIGNATION AS INDICATED ON THE F.E.M.A. MAP PANEL NO. 12085C 0145F, DATED OCT 10 2002, LOCATES THE PARCEL IN ZONE "X", MINIMUM ELEVATION = N/A

PORTION OF GOV'T LOT 2  
SECT. 7, TWP. 38S., RNG. 41E.



P.O.C.  
S. LINE GOV'T LOT 2  
& WEST R/W LINE  
MAPP ROAD