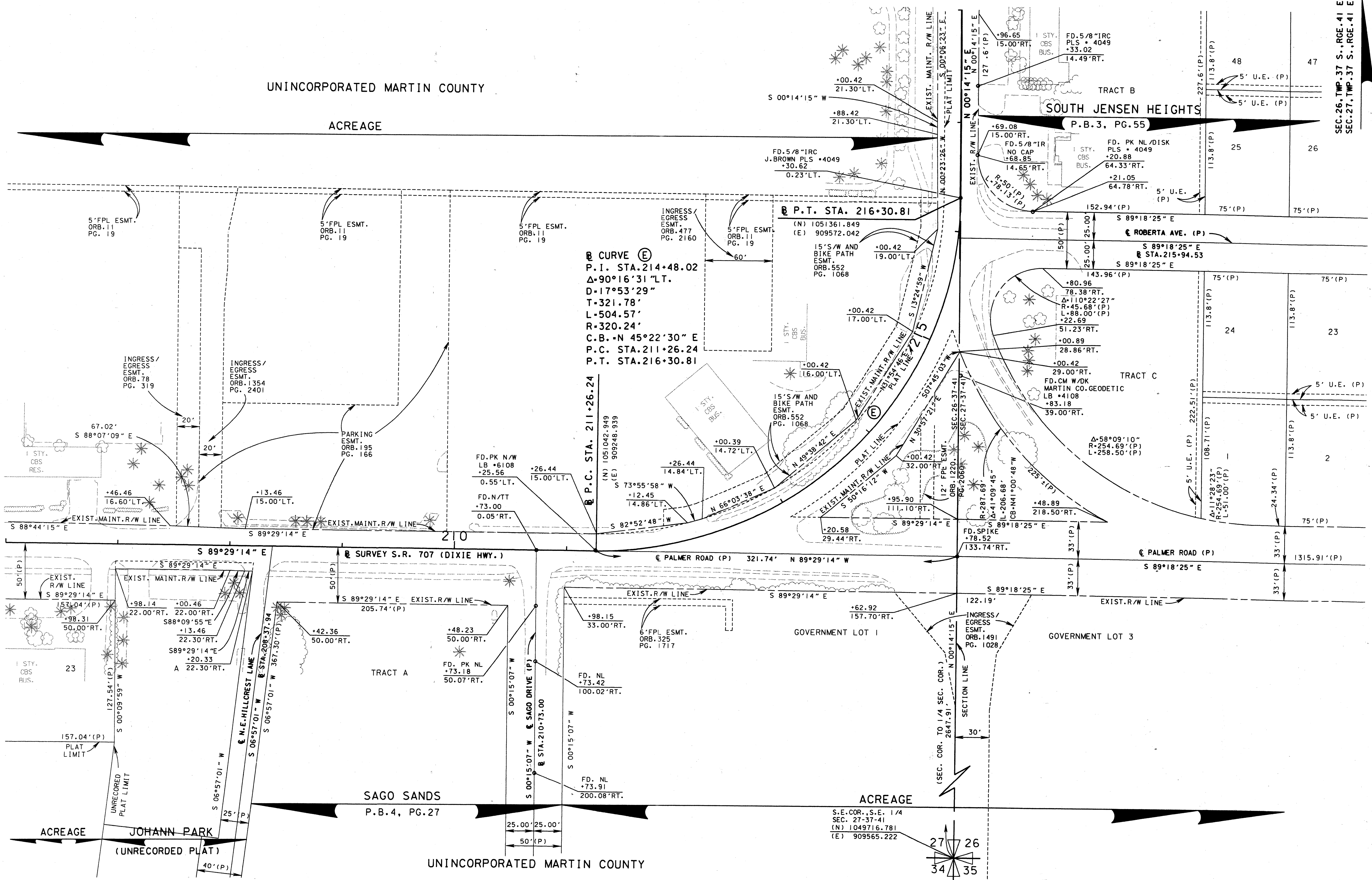


SEC. 26, TWP. 37 S., RGE. 41 E.
SEC. 27, TWP. 37 S., RGE. 41 E.

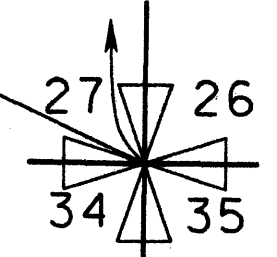
SCALE 1" = 40'

UNINCORPORATED MARTIN COUNTY

ACREAGE



S.E. COR. S.E. 1/4
SEC. 27-37-41
(N) 1049716.781
(E) 909565.222



SEE SHEET 1 FOR LEGEND
AND GENERAL NOTES

STATE ROAD 707 (DIXIE HWY.)
FROM SAVANNAH ROAD TO ARCH STREET

<p>MAINTENANCE MAP</p>	<p>FLORIDA DEPARTMENT OF TRANSPORTATION RIGHT OF WAY MAPPING</p>	<p>APPROVED BY <i>J. Smith</i> DATE <i>6/12/03</i></p>									
		<p>DISTRICT RIGHT OF WAY SURVEYOR</p>	REVISION	BY	DATE	REVISION	BY	DATE	PRELIM	DATE	BY
								<p>FED. PROJ. NO. N/A SECTION 89030-MAINT. (4)</p>		<p>MAPS PREPARED BY LB-696 KIMLEY-HORN AND ASSOCIATES</p>	<p>FIELD BOOK NO. 5 SEE SHEET 1</p>
								<p>STATE ROAD 707 (DIXIE HWY.) MARTIN COUNTY</p>		<p>W.P.L. No. N/A</p>	<p>SCALE 1" = 40'</p>
										<p>ITEM/SEGMENT NO. 4035911 SHEET 11 OF 12</p>	