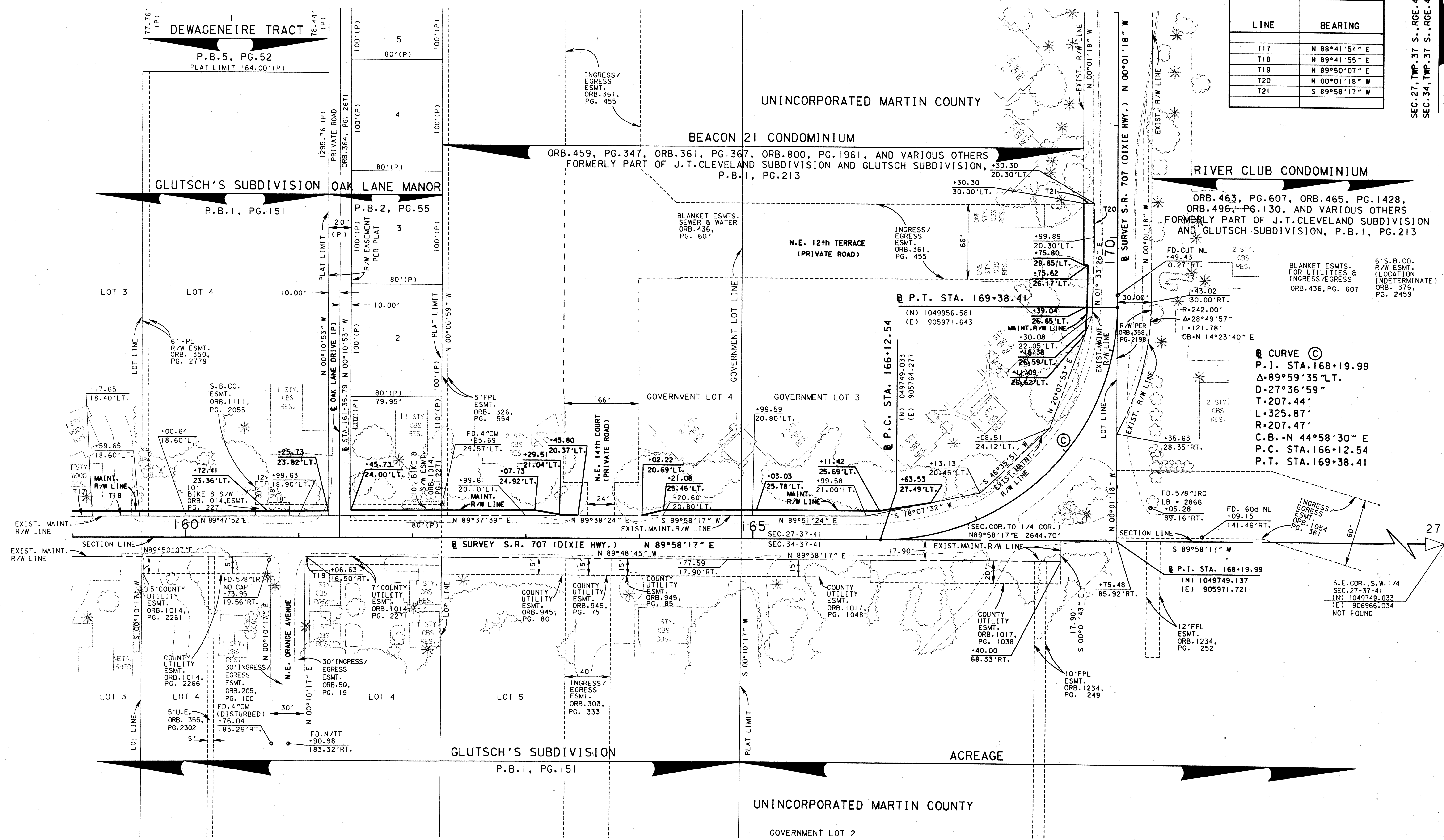


TANGENT DATA	
LINE	BEARING
T17	N 88°41'54" E
T18	N 89°41'55" E
T19	N 89°50'07" E
T20	N 00°01'18" W
T21	S 89°58'17" W

SEC. 27, TWP. 37 S., RGE. 41 E.
SEC. 34, TWP. 37 S., RGE. 41 E.

SCALE: 1" = 40'



CURVE C
 P.I. STA. 168+19.99
 Δ=89°59'35" LT.
 D=27°36'59"
 T=207.44'
 L=325.87'
 R=207.47'
 C.B. = N 44°58'30" E
 P.C. STA. 166+12.54
 P.T. STA. 169+38.41

SEE SHEET 1 FOR LEGEND AND GENERAL NOTES

STATE ROAD 707 (DIXIE HWY.) FROM SAVANNAH ROAD TO ARCH STREET

MAINTENANCE MAP

FLORIDA DEPARTMENT OF TRANSPORTATION
RIGHT OF WAY MAPPING

APPROVED BY: *J. Smith* DATE: 5/2/12
DISTRICT RIGHT OF WAY SURVEYOR

REVISION	BY	DATE	REVISION	BY	DATE

BY: L. CEFOLIA DATE: 8/17/01
 L. CEFOLIA 4/03/03
 J. EDGAR 4/07/03

FED. PROJ. NO. N/A SECTION 89030-MAINT. (4)
 STATE ROAD 707 (DIXIE HWY.) MARTIN COUNTY

MAPS PREPARED BY: LB# 696 KIMLEY-HORN AND ASSOCIATES
 FIELD BOOK NO.'S SEE SHEET 1
 W.P.I. No. N/A SCALE: 1" = 40'
 ITEM/SEGMENT NO. 4035911 SHEET 7 OF 12