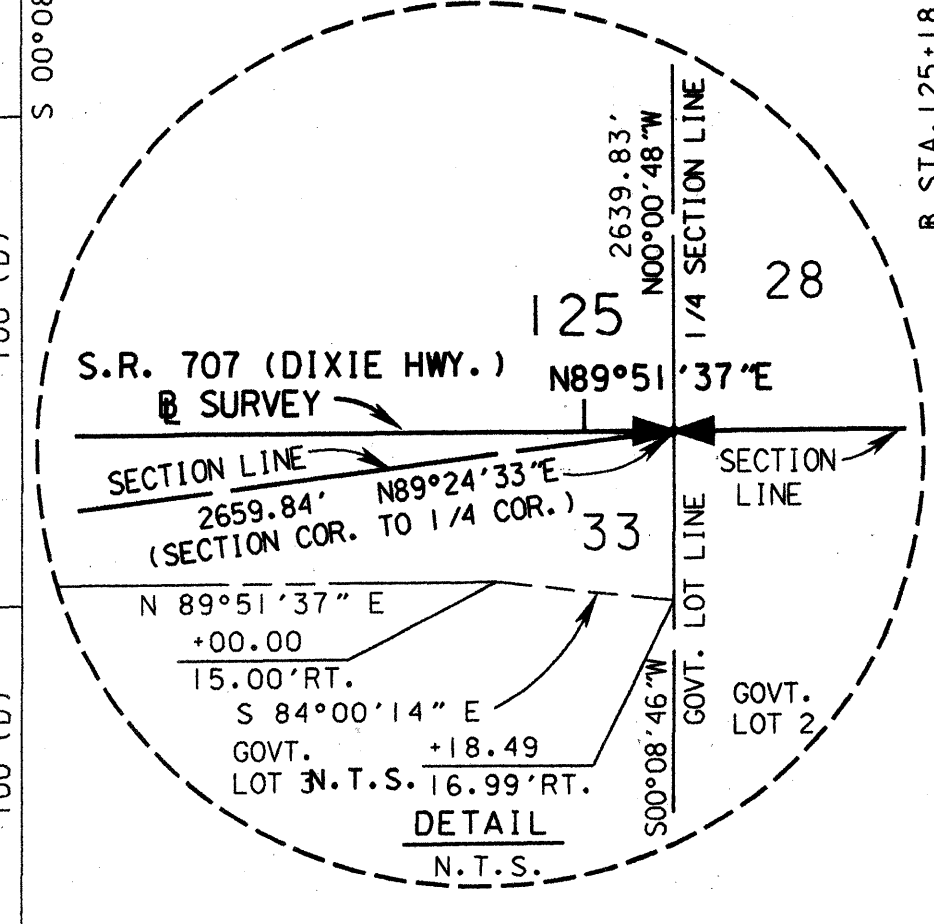
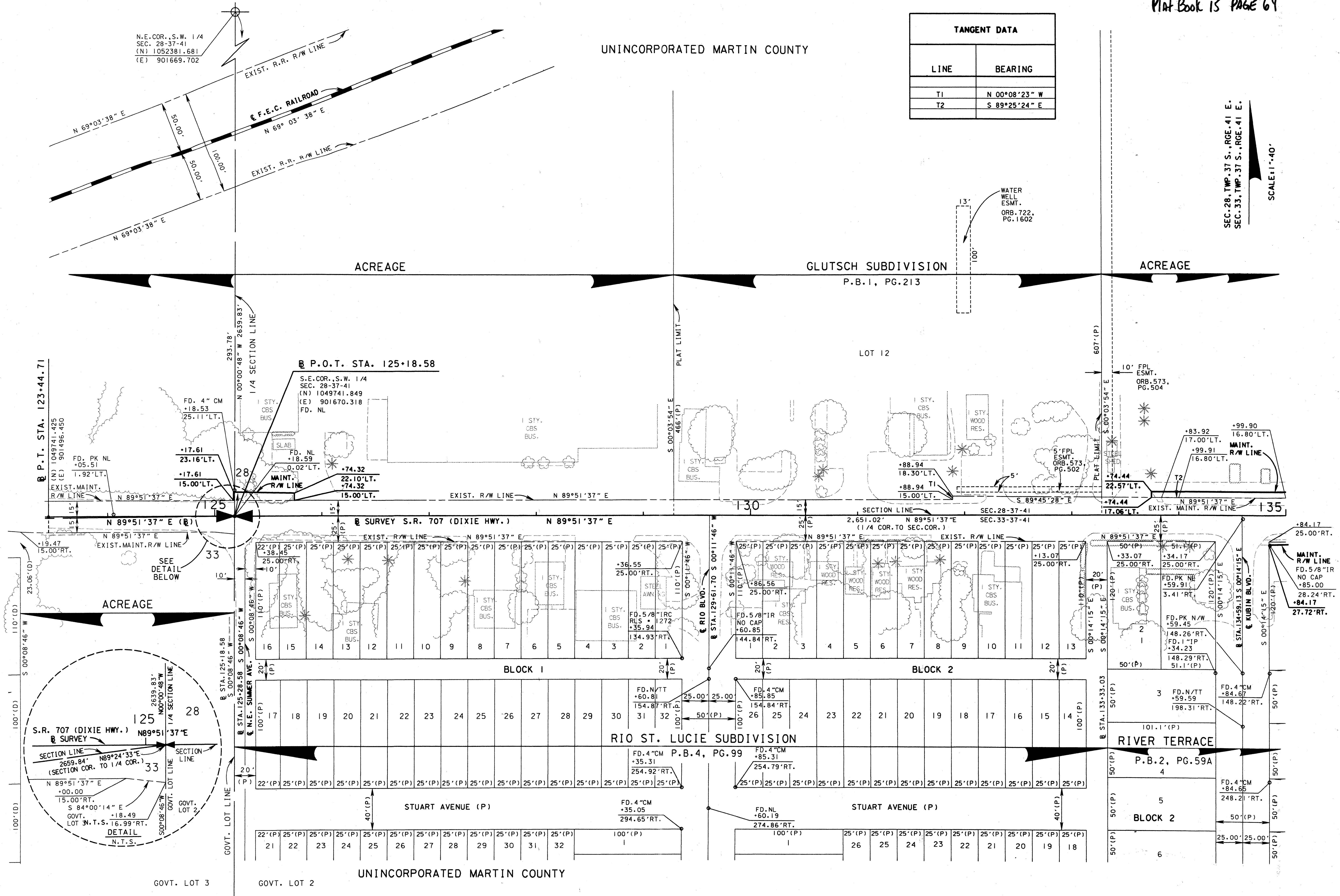


UNINCORPORATED MARTIN COUNTY

TANGENT DATA	
LINE	BEARING
T1	N 00°08'23" W
T2	S 89°25'24" E

SEC. 28, TWP. 37 S., RGE. 41 E.
SEC. 33, TWP. 37 S., RGE. 41 E.
SCALE 1" = 40'



SEE SHEET 1 FOR LEGEND AND GENERAL NOTES

STATE ROAD 707 (DIXIE HWY.) FROM SAVANNAH ROAD TO ARCH STREET

MAINTENANCE MAP

FLORIDA DEPARTMENT OF TRANSPORTATION
RIGHT OF WAY MAPPING

APPROVED BY: *J. Smith*
DATE: 5/12/08
DISTRICT RIGHT OF WAY SURVEYOR

REVISION	BY	DATE	REVISION	BY	DATE

BY	DATE
PRELIM L. CEFOLIA	8/17/01
FINAL L. CEFOLIA	4/03/03
CHECKED J. EDGAR	4/07/03

FED. PROJ. NO. N/A
SECTION 89030-MAINT. (4)
STATE ROAD 707 (DIXIE HWY.) MARTIN COUNTY

MAPS PREPARED BY LB# 696 KIMLEY-HORN AND ASSOCIATES	FIELD BOOK NO.'S SEE SHEET 1
W.P.I. No. N/A	SCALE: 1" = 40'
ITEM/SEGMENT NO. 4035911	SHEET 4 OF 12