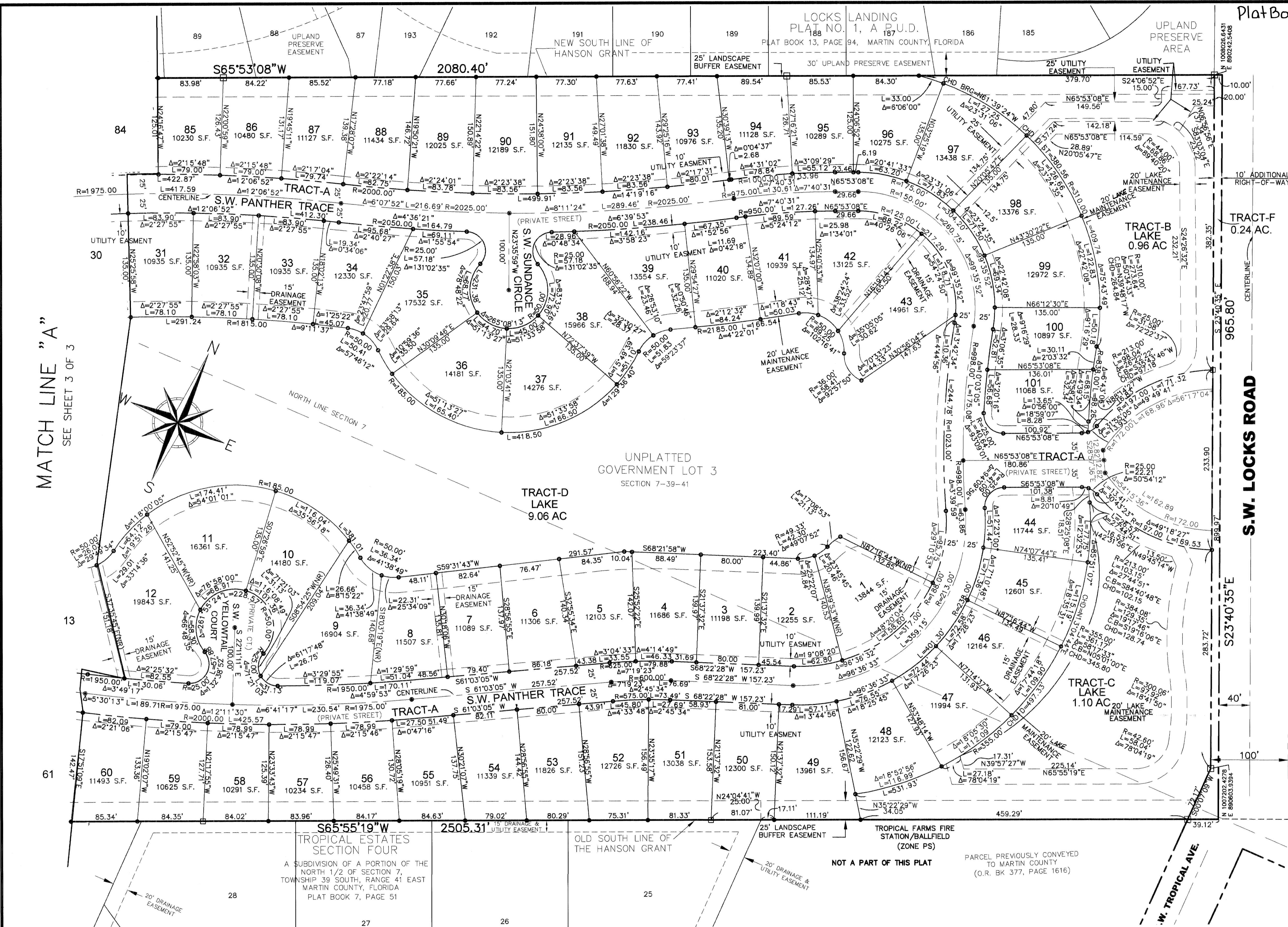


S.F.	SQUARE FEET
N	NORTH
S	SOUTH
E	EAST
W	WEST
R	RADIUS
L	LENGTH
O.R.	OFFICIAL RECORDS
CB	CORD BEARING
CHD	CHORD DISTANCE
Δ	CENTRAL ANGLE

GOVERNMENT LOT 3, LYING WEST OF LOCKS ROAD IN SECTION 6, TOWNSHIP 39 SOUTH, RANGE 41 EAST; AND GOVERNMENT LOT 3, SECTION 7, TOWNSHIP 39 SOUTH, RANGE 41 EAST, MARTIN COUNTY, FLORIDA.

LAKE TUSCANY, A PUD



MATCH LINE "A"
SEE SHEET 3 OF 3

S.W. LOCKS ROAD

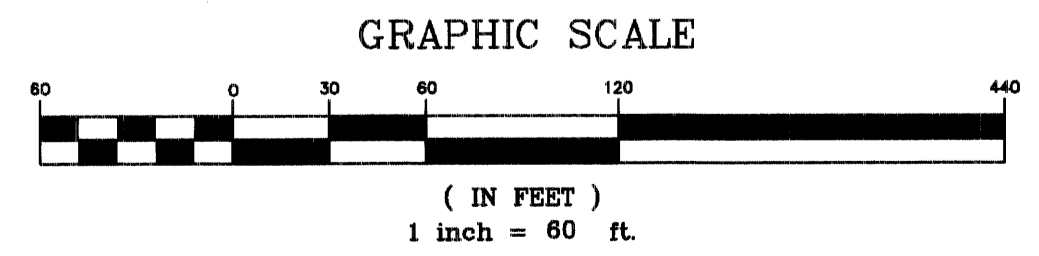
W. TROPICAL AVE.

GENERAL NOTES

A. BEARINGS AS SHOWN HEREON ARE BASED ON STATE PLANE COORDINATES, NAD 88/90 INFORMATION, BEARING OF N23°40'35"E ALONG THE WEST RIGHT OF WAY LINE OF S.W. LOCKS ROAD.

B. THIS PLAT, AS RECORDED IN ITS GRAPHIC FORM IN THE PUBLIC RECORDS, IS THE OFFICIAL DEPICTION OF THE SUBDIVIDED LANDS DESCRIBED HEREON AND WILL IN NO CIRCUMSTANCES BE SUPPLANTED IN AUTHORITY BY ANY OTHER FORM OF THE PLAT, WHETHER GRAPHIC OR DIGITAL.

C. NOTICE: THERE MAY BE ADDITIONAL RESTRICTIONS THAT ARE NOT RECORDED ON THIS PLAT THAT MAY BE FOUND IN THE PUBLIC RECORDS OF THIS COUNTY.



LEGEND

- INDICATES SET NUMBER 5 IRON ROD AND CAP "BL LB6852"
- INDICATES SET NAIL & DISK "BL LB6852" (PCP)
- INDICATES SET 4X4 CONCRETE MONUMENTS WITH ALLUMINUM DISK "BETSY LINDSAY, INC PRM LB 6852" PERMANENT REFERENCE MONUMENT (PRM)
- NR INDICATES NON RADIAL
- CENTERLINE INDICATES CENTERLINE RIGHT OF WAY

BETSY LINDSAY, INC.
SURVEYING AND MAPPING
208 NORTH U.S. HWY NO. 1 - UNIT 8 - TEQUESTA, FLORIDA 33469
(561)575-5275 (561)575-4324 FAX