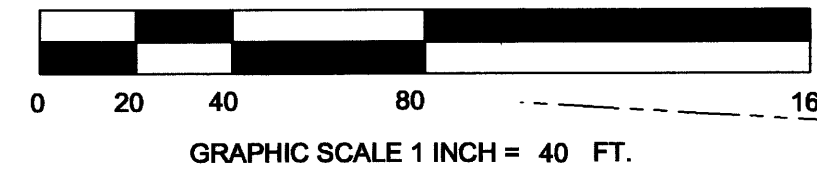


North



GRAPHIC SCALE 1 INCH = 40 FT.

# A Plat of Estuary P.U.D., Phase II

Being a Replat of a Portion of a re-subdivision of Lots 11 and 12 of Kitching's Subdivision, Plat Book 2, Page 19, as recorded in the Public Records of St. Lucie County, (now Martin County), Florida, all lying in Section 30, Township 37 South, Range 41 East, Martin County, Florida.

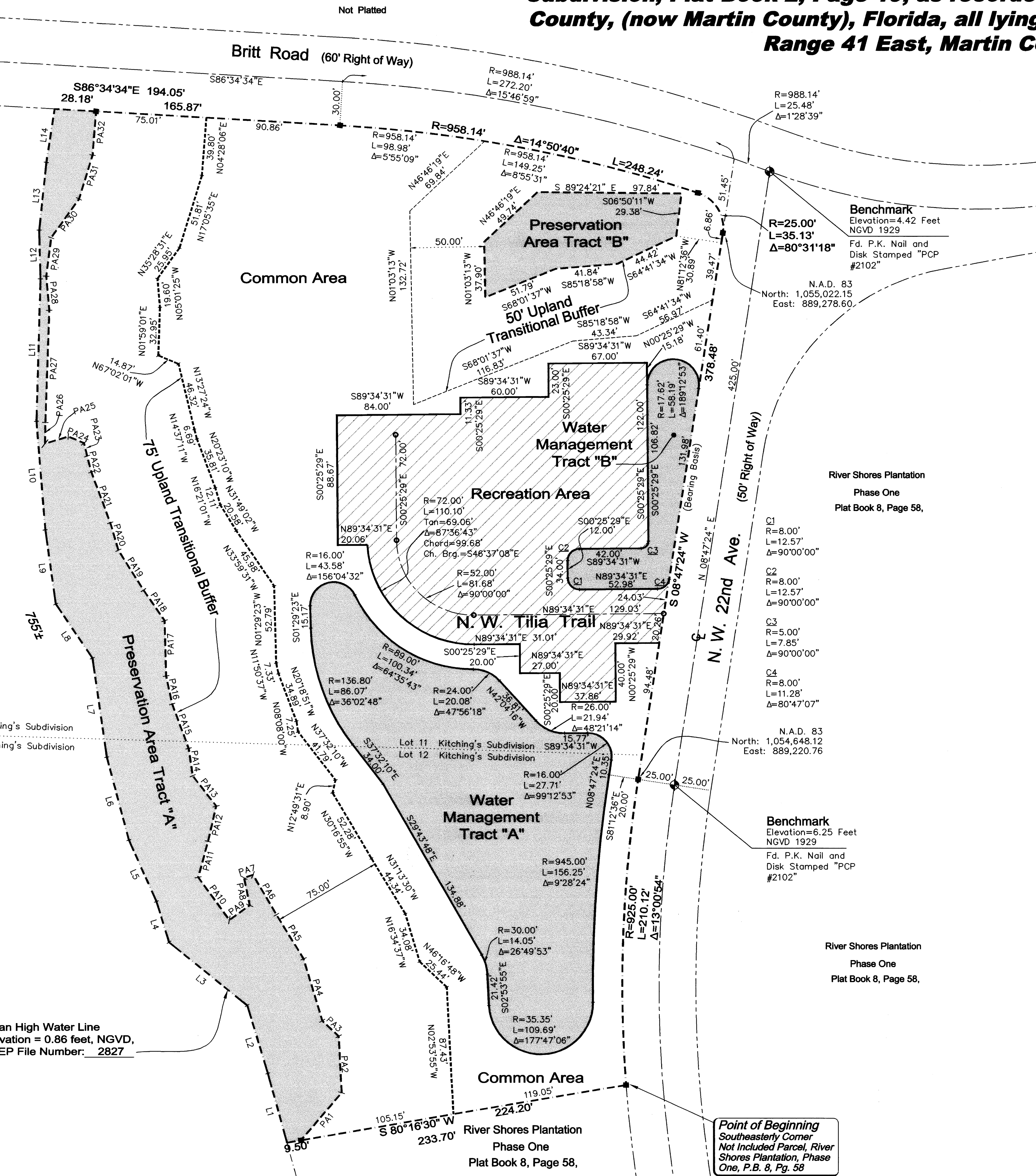
LINE	LENGTH	BEARING
PA1	42.81	N40°24'00"E
PA2	38.89	N02°53'55"W
PA3	15.50	N46°16'48"W
PA4	44.32	N16°34'37"W
PA5	35.32	N31°13'30"W
PA6	31.61	N30°16'55"W
PA7	6.42	S72°21'31"W
PA8	19.35	S11°44'09"E
PA9	17.10	S54°18'12"W
PA10	36.04	N35°55'32"W
PA11	25.38	N15°21'07"E
PA12	24.97	N12°49'31"E
PA13	26.20	N37°32'10"W
PA14	18.93	N08°08'00"W
PA15	32.45	N20°18'51"W
PA16	19.68	N11°50'37"W
PA17	37.72	N01°29'23"W
PA18	25.54	N33°59'31"W
PA19	32.19	N31°49'02"W
PA20	19.66	N16°21'01"W
PA21	36.94	N20°23'10"W
PA22	11.23	N14°37'11"W
PA23	9.22	N13°27'24"W
PA24	11.55	N67°02'01"W
PA25	16.56	S72°45'10"W
PA26	14.49	N00°58'56"E
PA27	76.98	N01°59'01"E
PA28	23.48	N05°01'25"W
PA29	26.43	N07°19'30"E
PA30	32.78	N35°28'31"E
PA31	31.38	N17°05'35"E
PA32	30.14	N04°28'06"E

LINE	LENGTH	BEARING
L1	49.46	N15°09'46"W
L2	48.62	N16°38'39"W
L3	68.52	N50°45'26"W
L4	29.29	N17°00'06"W
L5	45.91	N23°52'40"W
L6	58.84	N14°46'14"W
L7	68.56	N08°07'38"W
L8	44.57	N33°54'35"W
L9	51.53	N07°55'54"W
L10	74.41	N04°34'01"W
L11	97.71	N01°36'37"E
L12	33.30	N01°24'21"W
L13	46.75	N06°00'21"E
L14	37.09	N08°48'27"E

Mean High Water Line  
Elevation = 0.86 feet, NGVD,  
FDEP File Number: 2827

**Britt Creek**

Lot 11 Kitching's Subdivision  
Lot 12 Kitching's Subdivision



Benchmark  
Elevation=4.42 Feet  
NGVD 1929  
Fd. P.K. Nail and  
Disk Stamped "PCP  
#2102"

River Shores Plantation  
Phase One  
Plat Book 8, Page 58,

N.A.D. 83  
North: 1,054,648.12  
East: 889,220.76

Benchmark  
Elevation=6.25 Feet  
NGVD 1929  
Fd. P.K. Nail and  
Disk Stamped "PCP  
#2102"

River Shores Plantation  
Phase One  
Plat Book 8, Page 58,

Point of Beginning  
Southeasterly Corner  
Not Included Parcel, River  
Shores Plantation, Phase  
One, P.B. 8, Pg. 58

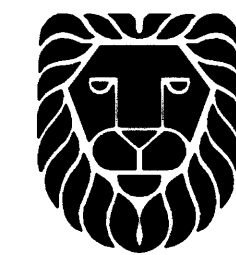
### NOTES

- Benchmark elevations as shown are referenced to the National Geodetic Vertical Datum of 1929 (N.G.V.D. 29), and are referenced to South Florida Water Management District Benchmark MAR-16, elevation 4.052 feet.
- Interior centerlines are shown for graphic purposes only; are part of the common area; and are not separately dedicated on this plat.
- Bearings refer to the West Right of Way Line of N.W. 22nd Avenue, having a Bearing of N 8°47'24"E, according to the plat of River Shores Plantation Phase 1, as recorded in Plat Book 8, Page 58 of the Public Records of Martin County, Florida.
- In the event that Martin County disturbs the surface of a private street due to maintenance, repair or replacement of a public improvement located therein, then the county shall be responsible for restoring the street surface only to the extent which would be required if the street were a public street, in accordance with county specifications.
- = Set P.R.M. (Permanent Reference Monument), a Set 4"x4" Concrete Monument with Disk Stamped "Aslan, Inc. P.S.M. 3336".
- = Set P.C.P. (Permanent Control Point), a Set P.K. Nail with Washer Stamped "Aslan, Inc. P.S.M. 3336".
- Coordinates shown hereon are based upon NAD 1983/1990 Adjustment, State Plane Transverse Mercator Projection, Florida East Zone, US Survey Feet Units.

### NOTICE

1. This plat, as recorded in its original form in the public records, is the official depiction of the subdivided lands described hereon and will in no circumstances be supplanted in authority by any other form of the plat, whether graphic or digital. There may be additional restrictions that are not recorded on this plat that may be found in the public records of this county.

PREPARED BY: Eric B. Holly, P.S.M.



**ASLAN, INC.**  
CONSULTANTS • PLANNERS • SURVEYORS  
LAND INFORMATION SERVICES  
2440 S.E. Federal Highway - Suite 700  
Stuart, FL 34994 (772) 288-4880 Fax 288-0128

SHEET 2 OF 2

Plat Book 15 Page 58