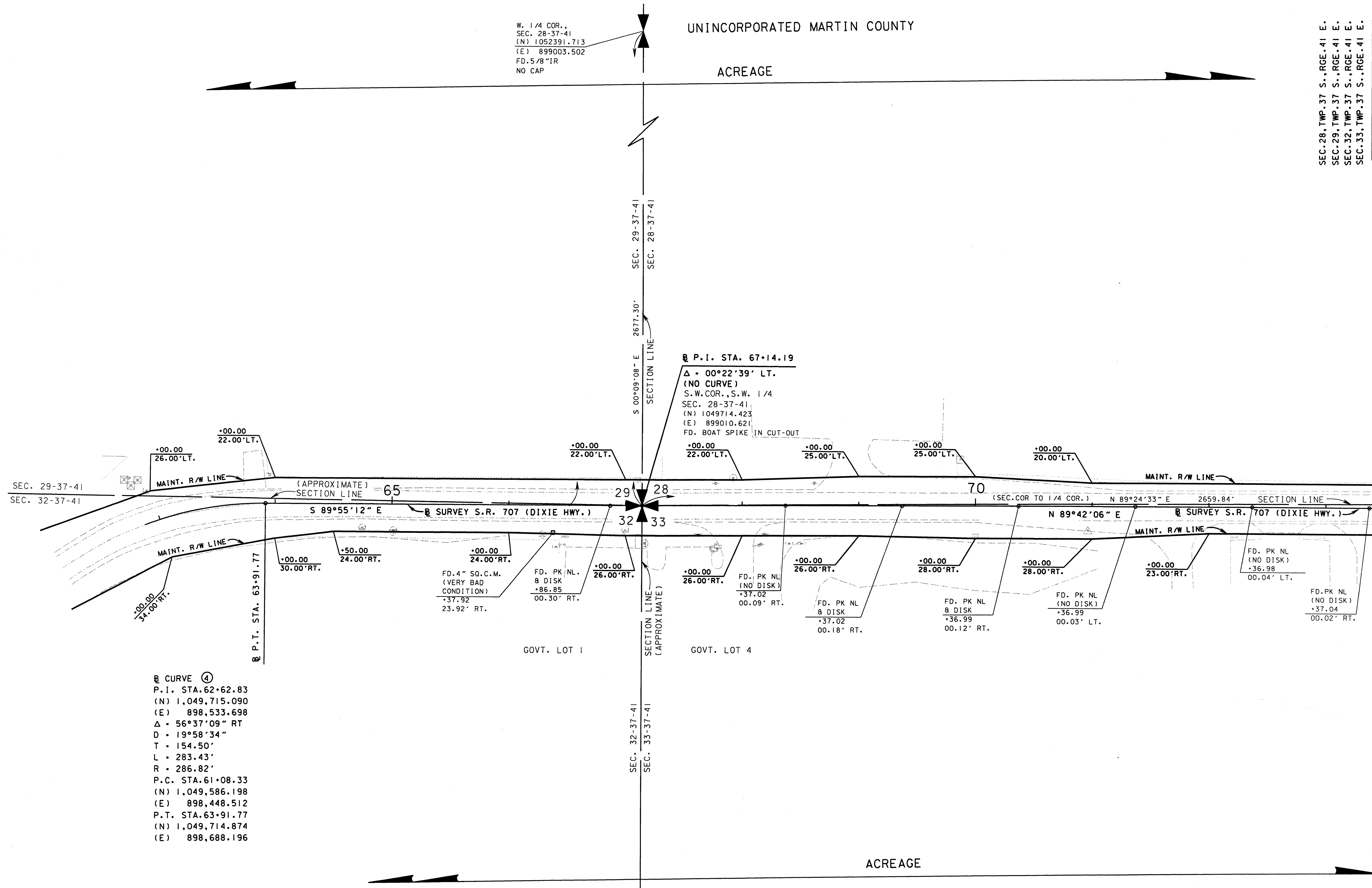


W. 1/4 COR.,
 SEC. 28-37-41
 (N) 1052391.713
 (E) 899003.502
 FD. 5/8" IR
 NO CAP

UNINCORPORATED MARTIN COUNTY

ACREAGE

SEC. 28, TWP. 37 S., RGE. 41 E.
 SEC. 29, TWP. 37 S., RGE. 41 E.
 SEC. 32, TWP. 37 S., RGE. 41 E.
 SEC. 33, TWP. 37 S., RGE. 41 E.
 SCALE: 1" = 40'



④ CURVE
 P.I. STA. 62+62.83
 (N) 1,049,715.090
 (E) 898,533.698
 $\Delta = 56^\circ 37' 09''$ RT
 D = 19' 58" 34"
 T = 154.50'
 L = 283.43'
 R = 286.82'
 P.C. STA. 61+08.33
 (N) 1,049,586.198
 (E) 898,448.512
 P.T. STA. 63+91.77
 (N) 1,049,714.874
 (E) 898,688.196

SEE SHEET 1 FOR GENERAL NOTES, CERTIFICATIONS, LEGEND, ETC.

MAINTENANCE MAP

FLORIDA DEPARTMENT OF TRANSPORTATION
 RIGHT OF WAY MAPPING

APPROVED BY
Jeffrey Smith
 DISTRICT RIGHT OF WAY SURVEYOR

REVISION	BY	DATE	REVISION	BY	DATE

BY	DATE
PRELIM L. CEFOLIA	5/17/02
FINAL L. CEFOLIA	10/10/02
CHECKED J. EDGAR	10/11/02

STATE ROAD 707 (DIXIE HWY.)
 FROM WRIGHT BLVD. TO SAVANNAH ROAD

FED. PROJ. NO. N/A SECTION 89030-MAINT. (3)
 STATE ROAD 707 (DIXIE HWY.) MARTIN COUNTY

MAPS PREPARED BY	LB#	FIELD BOOK NO.'S
KIMLEY-HORN AND ASSOCIATES	696	SEE SHEET 1
W.P.I. No.	N/A	SCALE
		1" = 40'

ITEM/SEGMENT NO. 4035911 SHEET 5 OF 6