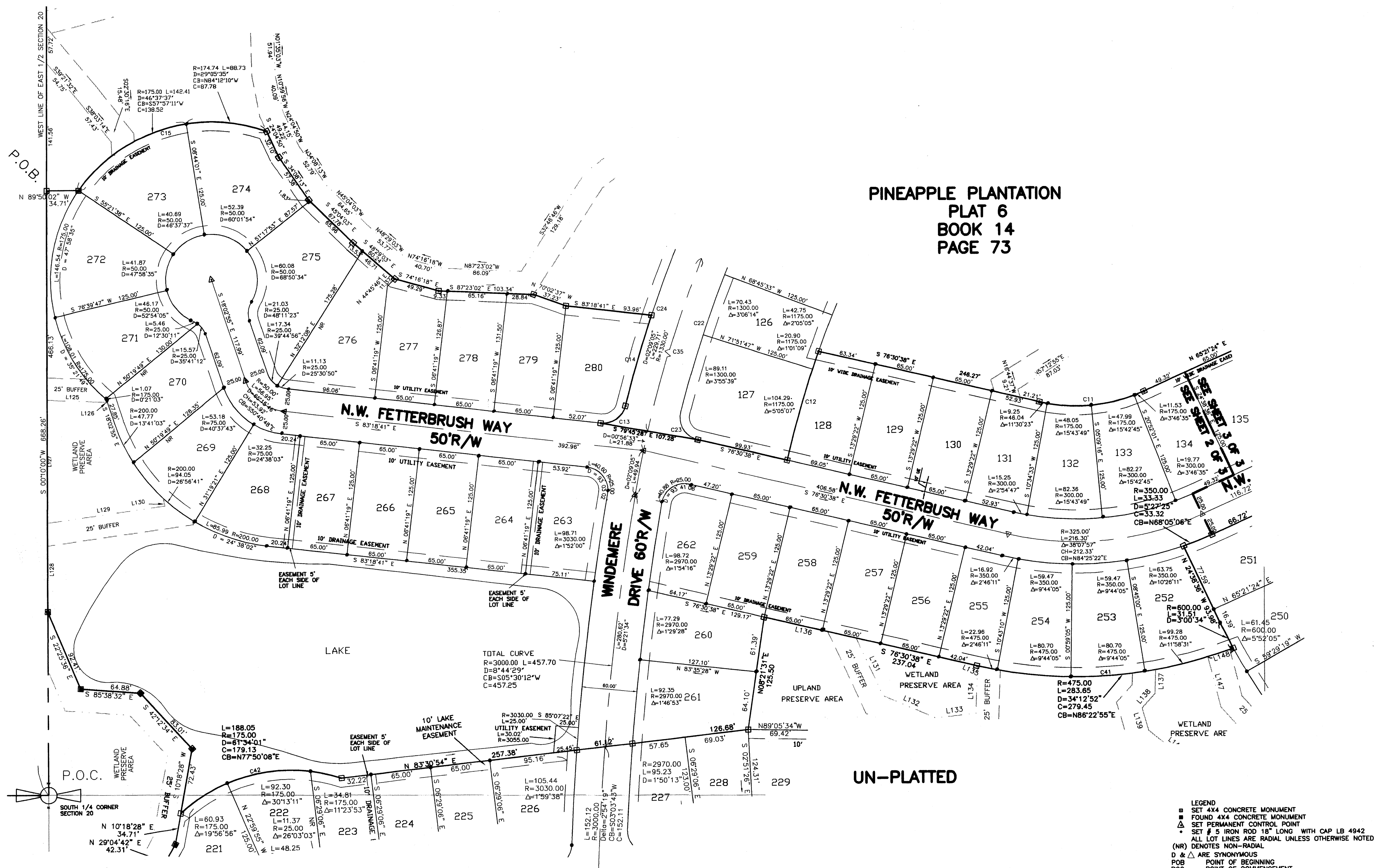


PINEAPPLE PLANTATION PLAT 7, PHASE B

BEING A REPLAT OF A PORTION OF SECTION 20, TWP. 37 SOUTH, RNG 41 EAST ST. LUCIE GARDENS AS RECORDED IN PLAT BOOK 1 PAGE 35 OF THE PUBLIC RECORDS OF ST. LUCIE COUNTY (NOW MARTIN COUNTY) FLORIDA.

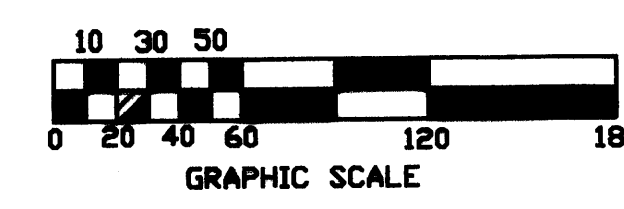
SUBDIVISION PARCEL CONTROL NUMBER

Table with columns: CURVE, LENGTH, RADIUS, DELTA, CHORD, CH-BRG. Lists curve data for various segments.



PINEAPPLE PLANTATION PLAT 6 BOOK 14 PAGE 73

Table with columns: LINE, LENGTH, BEARING. Lists line data for various segments across the plat.



NOTICE: THIS PLAT AS RECORDED IN ITS GRAPHIC FORM IS THE OFFICIAL DEPICTION OF THE SUBDIVIDED LANDS DESCRIBED HEREIN AND WILL IN NO CIRCUMSTANCES BE SUBPLANTED IN AUTHORITY BY ANY OTHER GRAPHIC OR DIGITAL FORM OF THE PLAT...

LEGEND: SET 4X4 CONCRETE MONUMENT, FOUND 4X4 CONCRETE MONUMENT, SET PERMANENT CONTROL POINT, SET 5 IRON ROD 18" LONG WITH CAP LB 4942, ALL LOT LINES ARE RADIAL UNLESS OTHERWISE NOTED, DENOTES NON-RADIAL, ARE SYNONYMOUS, POINT OF BEGINNING, POINT OF COMMENCEMENT, DENOTES LENGTH, DENOTES RADIUS, DENOTES CHORD, DENOTES CHORD BEARING, DENOTES TOWNSHIP, DENOTES RANGE, DENOTES 10' EASEMENT CENTERED 5' EACH SIDE OF PROPERTY LINE. L.B. 4942 EDWIN R. MATTHEWS PSM 3954 702 S.W. PORT ST. LUCIE BLVD. PORT ST. LUCIE, FLORIDA 34953 TELEPHONE (561) 879-0477